

For Commercial Applications

Job Name _____
 Job Location _____
 Engineer _____
 Approval _____

Contractor _____
 Approval _____
 Contractor's P.O. No. _____
 Representative _____

Series F-511
Class 125 Cast Iron Check Valves
 Sizes: 2"-10" (50-250mm)

Watts Series F-511 Class 125 Cast Iron Check Valves comply with MSS-SP-71 and feature a bolted cover, bronze mounting and swing type disc.

Features:

- Bolted Cover
- Bronze Mounted
- Swing Type Disc
- 2"-10" (50-250mm) flanged end connections (ANSI/ASME B16.1)

Pressure — Temperature:

- 125psi WSP to 353°F (178°C)
- 200psi WOG non-shock



Materials List

NO.	DESCRIPTION	MATERIAL	ASTM SPEC
1	Body	Cast Iron	ASTM A126 Class B
2	Cover	Cast Iron	ASTM A126 Class B
3	Disc (2"-4")	Bronze	ASTM B62
	(5"-10")	Cast Iron	ASTM A126 Class B
4	Disc Nut	Carbon Steel	ASTM A307 Gr. B
5	Split Pin	Stainless Steel	ASTM A580 Type 304
6	Name Plate	Aluminum	Commercial
7	Hinge Pin	Brass	ASTM B124, C37700
8	Plug	Carbon Steel	ASTM A36
9	Gasket	Non-Asbestos Sheet	Commercial
10	Body Seat Ring	Bronze	ASTM B62
11	Cover Nut	Carbon Steel	ASTM A307 Gr. B
12	Cover Bolt	Carbon Steel	ASTM A307 Gr. B
13	Gasket	Non-Asbestos Sheet	Commercial
14	Disc Seat Ring	Bronze	ASTM B62
15	Arm	Ductile Iron	ASTM A536 Gr. 60-40-18
16	Washer	Carbon Steel	ASTM A36
17	Disc Bolt	Carbon Steel	ASTM A307 Gr. B
18	Spring Pin	Carbon Steel	ASTM A686 Type W1

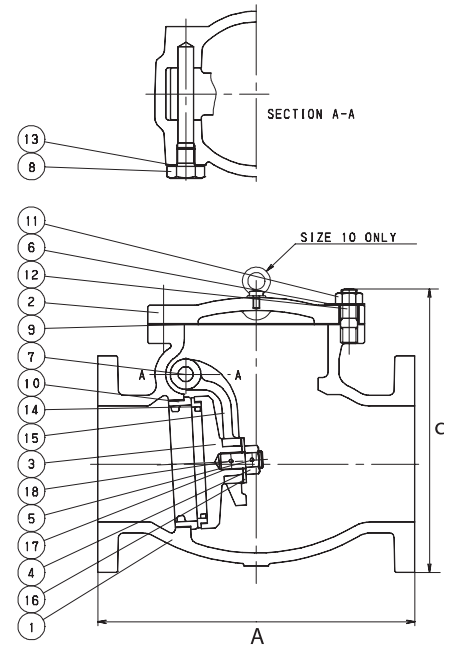
Specifications

Valve shall be manufactured out of Class 125 cast iron and comply with MSS-SP-71. Valve shall be pressure rated to 125psi WSP, 200psi WOG non-shock and have flanged ends. Valve shall have a bolted cover, bronze mounting and swing type disc. Valve shall be a Watts Regulator Company Series F-511.

Dimensions — Weights

Size	Ordering Code	A		C		Weight		
		End-to-End						
in.	mm.	in.	mm	in.	mm	lb.	kg.	
2	50	0106377	8	203	4 ³ / ₈	111	24	10.9
2½	65	0106378	8½	216	4¾	121	38	17.2
3	80	0106379	9½	241	5 ¹¹ / ₁₆	144	47	21.3
4	100	0106380	11½	292	6½	165	66	29.9
5	125	0106381	13	330	8 ¹ / ₈	206	111	50.3
6	150	0106382	14	356	8 ⁷ / ₈	225	153	69.4
8	200	0106383	19½	495	10 ⁹ / ₁₆	268	251	113.9
10	250	0106384	24½	622	12 ³ / ₈	314	396	179.6

Watts product specifications in U.S. customary units and metric are approximate and are provided for reference only. For precise measurements, please contact Watts Technical Service. Watts reserves the right to change or modify product design, construction, specifications, or materials without prior notice and without incurring any obligation to make such changes and modifications on Watts products previously or subsequently sold.



USA: 815 Chestnut St., No. Andover, MA 01845-6098; www.wattsreg.com
Canada: 5435 North Service Rd., Burlington, ONT. L7L 5H7; www.wattscda.com