



T&S BRASS AND BRONZE WORKS, INC.

2 Saddleback Cove / P.O. Box 1088
Travelers Rest, SC 29690

Model No.

B-2743

Item No.

Travelers Rest, SC: 800-476-4103 • Simi Valley, CA: 800-423-0150 • Fax: 864-834-3518 • www.tsbrass.com

This Space for Architect/Engineer Approval

Job Name _____ Date _____

Model Specified _____ Quantity _____

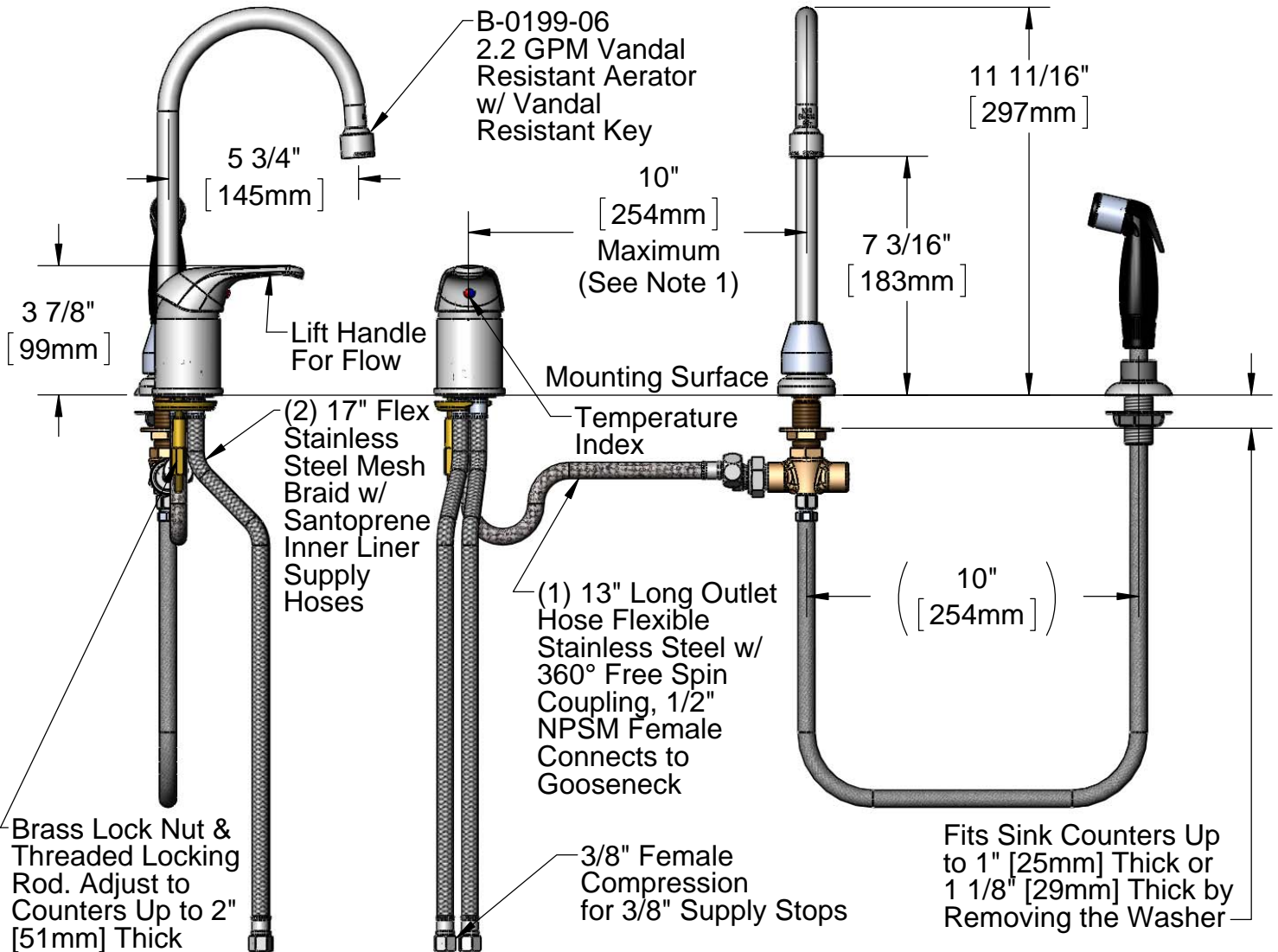
Customer/Wholesaler _____

Contractor _____

Architect/Engineer _____



ADA Compliant



Note 1: Flex Hose May Kink if 10" Maximum is Exceeded

Note: Rough-In Requirement
 Side Mount: Ø 1 1/2" [38mm] Mounting Hole
 Rigid Deck Flange: Ø 1" [25mm] Mounting Hole

Product Specifications:

Side Mount Faucet w/ Remote On-Off Control Base, 17" Flex Supply Hoses & Swivel Gooseneck w/ 2.2 GPM Vandal Resistant Aerator

Drawn

DHL

Checked

KJG

Approved

JHB

Scale:

1:5

Date:

01/10/12



T&S BRASS AND BRONZE WORKS, INC.

2 Saddleback Cove / P.O. Box 1088
Travelers Rest, SC 29690

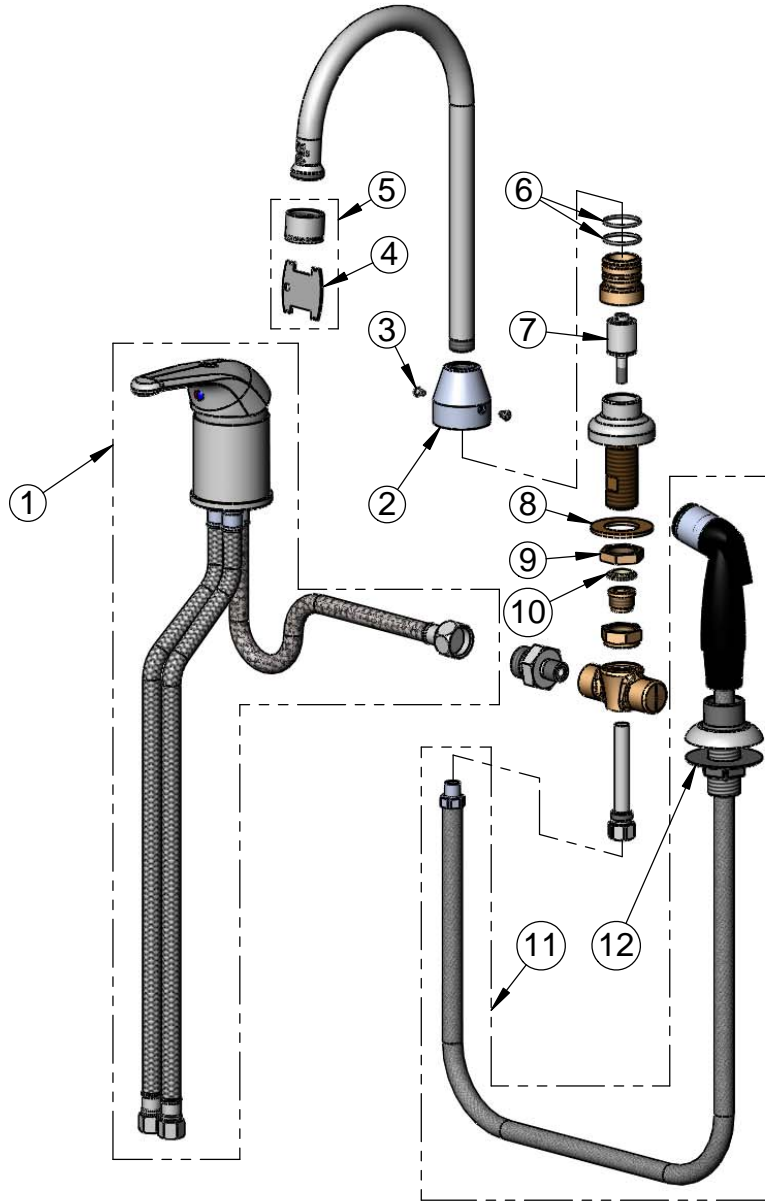
Model No.

B-2743

Item No.

Travelers Rest, SC: 800-476-4103 • Simi Valley, CA: 800-423-0150 • Fax: 864-834-3518 • www.tsbrass.com

ITEM NO.	SALES NO.	DESCRIPTION
1	B-2740	Side Mount Single Lever Control Faucet
2	001485-40	CV B-1172 Diverter
3	001486-45	Diverter Cover Screw
4	015425-45	Vandal Resistant Key
5	B-0199-06	VR Aerator w/ Key
6	001069-45	O-ring - 020
7	002338-45	Valve Diverter Piston
8	000999-45	Brass Lock Washer
9	002954-45	Shank Lock Nut
10	012702-45	Washer, Cross Body
11	001495-45	Sidespray & Hose Guide, 1/8" NPT
12	001496-45	Hose Guide B-1172



Product Specifications:

Side Mount Faucet w/ Remote On-Off Control Base, 17" Flex Supply Hoses & Swivel Gooseneck w/ 2.2 GPM Vandal Resistant Aerator

Drawn

DHL

Checked

KJG

Approved

JHB

Scale:

NTS

Date:

01/10/12