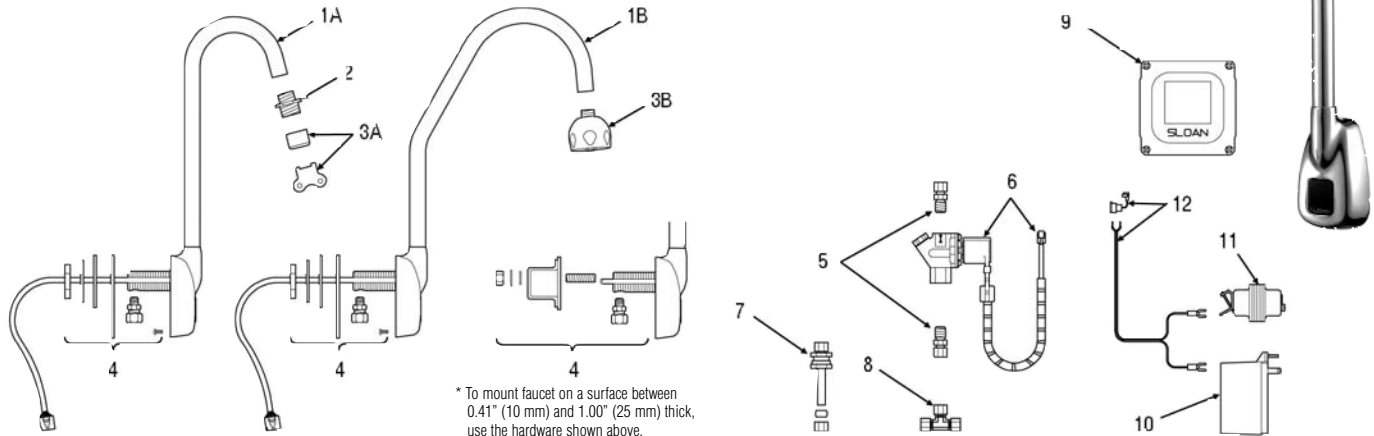


OPTIMA ETF-500 Faucet



Parts List—ETF-500 Faucet

| Item Number | Code Number | Part Number | Description |
|-------------|-------------|-------------|---|
| 1A | 0365111 | ETF-561-A | Faucet/Sensor Assembly with Standard Gooseneck Spout (ETF-500) |
| 1B | 0365112 | ETF-564-A | Faucet/Sensor Assembly with Surgical Bend Gooseneck Spout (ETF-500-S) |
| — | 0365097 | ETF-568-A | Sensor Housing and Cable Assembly for ETF-500 and ETF-500-S Faucets |
| 2 | 0305784 | ETF-178 | Aerator Adapter for Spray Heads (not required for AC-55-A Shower Spray Head) |
| 3A | 3365091 | ETF-1021-A | 0.5 gpm (1.9 Lpm) Spray Head with Key (female thread) |
| | 3365090 | ETF-1022-A | 2.2 gpm (8.3 Lpm) Aerator Spray Head with Key (female thread) |
| | 0305612 | ETF-237 | 2.2 gpm (8.3 Lpm) Laminar Flow Spray Head (female thread) |
| | 0305927 | ETF-435 | Replacement Key ONLY for ETF-1021-A Spray Head and ETF-1022-A Aerator Spray Head (NOT required for ETF-237 Laminar Flow Spray Head) |
| 3B | 0328134 | AC-55-A | Shower Spray Head Assembly, 2.2 gpm (8.3 Lpm) |
| 4 | 0315060 | EBF-110-A | Faucet Mounting Kit includes Base Gasket, large Flat Washer, large Lockwasher, large Nut, Mounting Spacer, Mounting Stud, small Flat Washer, small Lockwasher, small Nut, Anti-Rotation Screw, and ETF-591 Compression Fitting Connector (male) |
| | 0365152 | ETF-591 | 1/8" NPT Pipe to 3/8" Tube Male Compression Fitting Connector |
| 5 | 3365676 | ETF-437-A | Single Solenoid Supply Kit includes Supply Tube, two (2) ETF-61 Compression Fittings, Compression Nut, and Ferrule |
| 6 | 0305849 | ETF-370-A | 24 VAC Solenoid Valve Assembly includes 18" (153 mm) armored Cable and two (2) Terminal Housings |
| 7 | 3365001 | ETF-470-A | Back Check |
| 8 | 0305728 | ETF-259 | 3/8" Tee Compression Fitting |
| 9 | 3365000 | ETF-450-A | Control Module Assembly includes splashproof Junction Box and Junction Box Mounting Kit |
| 10 | 0365534 | ETF-233 | 120V/35VA Plug-In Transformer |
| 11 | 0345370 | EL-248-40 | 24V/40VA Box Mount Transformer |
| 12 | 0365001 | ETF-458-A | Input Power Cable (Transformer to Control Module) includes Strain Relief and two (2) Terminal Crimp Connectors |
| 13 | n/a | EBF-110-A | Old Faucet Mounting Kit included 3/8" Water Supply Tube, Base Gasket, large Flat Washer, large Lockwasher, large Nut, and ETF-547 Compression Fitting Connector (order items 4 and 14 as replacement parts) |
| 14 | 0365058 | ETF-547 | 1/8" NPT Pipe to 3/8" Tube Female Compression Fitting Connector |
| — | 3305577 | ETF-1009-A | Solenoid Valve Repair Kit includes Replacement Filter |

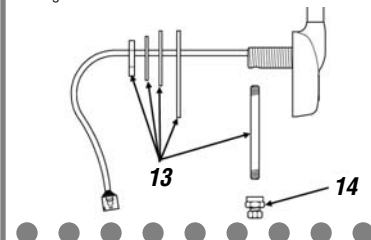
FAUCET CABLE EXTENSION CORDS

| | | | |
|---|---------|--------------|--|
| — | 0365042 | ETF-1005-26 | Faucet to Control Module Extension Cord; 26 inch (0.7 meter) Length |
| — | 0365861 | ETF-1005-36 | Faucet to Control Module Extension Cord; 36 inch (0.9 meter) Length |
| — | 0305862 | ETF-1005-72 | Faucet to Control Module Extension Cord; 72 inch (1.8 meter) Length |
| — | 0305863 | ETF-1005-108 | Faucet to Control Module Extension Cord; 108 inch (2.7 meter) Length |
| — | 0365838 | ETF-1003-36 | Solenoid to Control Module Extension Cord; 36 inch (0.9 meter) Length |
| — | 0365053 | ETF-1003-48 | Solenoid to Control Module Extension Cord; 48 inch (1.2 meter) Length |
| — | 0365839 | ETF-1003-72 | Solenoid to Control Module Extension Cord; 72 inch (1.8 meter) Length |
| — | 0365840 | ETF-1003-108 | Solenoid to Control Module Extension Cord; 108 inch (2.7 meter) Length |

Mounting Kit and Faucet Shank

The new mounting kit (in production since June 1999; part 4 shown on the left) includes parts for installation on both thin and thick surfaces, an **ETF-591** male compression fitting, and an anti-rotation screw for installation on sheet metal surfaces less than 0.41" (10 mm) thick. For surfaces between 0.41" (10 mm) and 1.00" (25 mm) thick, use the mounting spacer and mounting stud hardware*. The faucet sensor cable is threaded through a groove on the side of the shank.

The older mounting kit (part 13 shown below) can be identified by a copper supply tube attached to the faucet shank., requires an **ETF-547** compression fitting, and threads the faucet sensor cable through the interior of the shank.



New Base Gasket

The new base gasket (in production since October 1999) is shown at left. An older base gasket design did not have the u-shaped drainage hole.