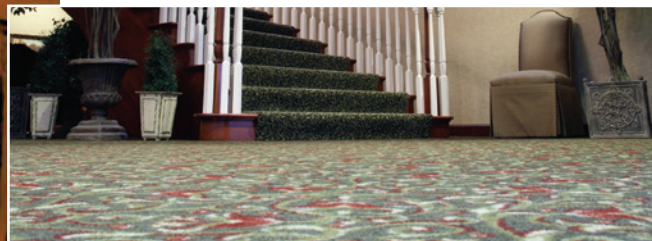


Protect Carpet And Furniture Fabric From Spills And Accidents

Protect-O™ is a water-based fluorochemical that provides an invisible, protective shield for new or just cleaned carpet and upholstery. **Protect-O™** makes carpet resistant to oily spills and wet or dry soil. Spills can be removed before soaking into the fiber. Treated carpet will last longer, clean easier and look better between cleanings with regular vacuuming and prompt attention to spills. Solvent free and safe. Dries quickly with no unpleasant odors.



DIRECTIONS: Shake well before using. Test fabric in inconspicuous place for color fastness before using.

FOR DAMP (just cleaned) CARPET

Dilute 1 gallon **Protect-O™** (3.78 L) with 2 gallons (7.57 L) of water. One diluted gallon will cover 200 sq. ft. (20' x 20') of average carpet.

FOR DRY OR DRIED CARPET

Dilute 1 gallon **Protect-O™** (3.78 L) with 4 gallons (15.14 L) of water. One diluted gallon will cover 200 sq. ft. (20' x 20') of average carpet.

1. Adjust spraying equipment to deliver 3 to 5 gallons (11.34 to 18.9 L) use solution for 800 sq. ft. in two passes, depending on whether carpet is damp or dry, and apply horizontally and vertically to assure uniform coverage.

2. Rack into nap lightly, finishing by brushing nap in one direction.

-Use furniture protectors under legs on damp carpet.

-Wipe off any **Protect-O™** sprayed on walls, molding, furniture legs, wood, or painted surfaces immediately.

3. Rinse spray equipment after use. Test for adequate and uniform application of **Protect-O™** by spilling a few drops of water over several places of treated, dried carpet. The water should bead up and remain on surface; if it soaks into fabric, additional application is recommended.

CARE OF TREATED CARPETS: Vacuum or use Certified Pile Brush for normal maintenance. If spills occur, they can normally be wiping up before they soak in and cause a stain. If spot or stain must be cleaned (shampoo or hot water extraction) **Protect-O™** may be applied only over the area cleaned.

NOTE: Freezing will not affect cleaning power. Thaw, shake well and use.



Nilodor, Inc.

10966 Industrial Parkway, N.W. P.O. Box 660
Bolivar, OH 44612-0660 U.S.A.

1-800-443-4321 or (330) 874-1017 FAX (330) 874-3366

www.nilodor.com