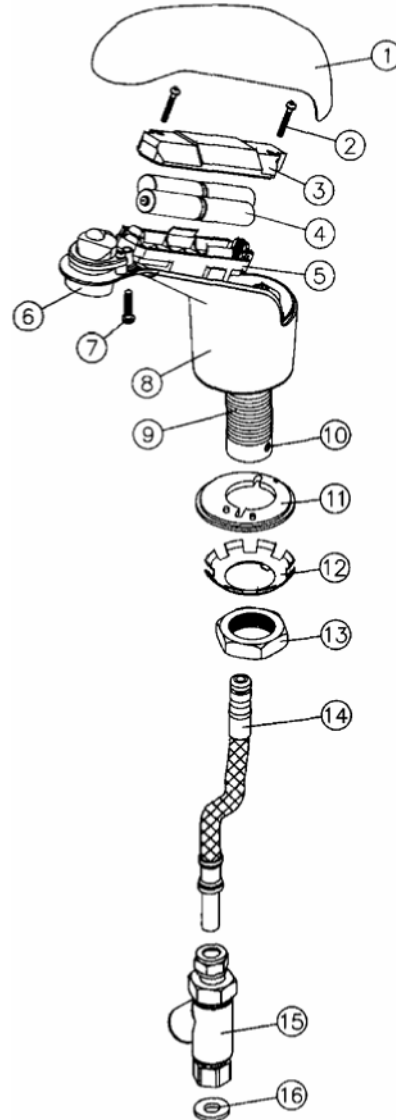


INSTALLATION INSTRUCTIONS

Hydrotek Non-Mixing Automatic Faucet (Battery Powered)

Model HB-5000E



1. Prior to installing this faucet, thoroughly flush all water lines and replace stop washers, if necessary.
2. To ensure proper operation, " DRY TEST " the faucet by loosening the Cover Screw (7) and removing the Top Cover (1). Loosen the Battery Holder Screws (2) and remove the Battery Holder Cover (3). Insert batteries into the Battery Holder (5) and reinstall the Battery Holder Cover. The faucet should immediately perform a self-adjusting and diagnostic function. If you see the indicator light flash and hear a clicking sound, proceed to the next step. If there is no flash of light or clicking sound, recheck batteries for correct positioning.
3. Remove Battery Holder Cover and batteries.
4. Rotate the Supply Tube Locking Screw (10) fully clockwise. Insert the end of the Supply Tube (14) (with O-rings) fully into the bottom of the Mounting Rod (9) by twisting and pushing until properly seated. Rotate Supply Tube Locking Screw (10) counter-clockwise until the red indicator marking on the Locking Screw is at its closest position to the red indicator marking on the Mounting Rod. This is necessary to ensure that the Supply Tube has been properly locked into the Mounting Rod.
5. Install In-Line Filter (15) onto stop valve using the Nylon Washer (16).
6. Unscrew the Mounting Nut (13) from the Mounting Rod (9) and completely remove both the Mounting Nut (13) and the Star Locking Washer (12).
7. From above the deck, carefully feed the faucet's Supply Tube (14) and Mounting Rod (9) into the deck mounting hole and seat the faucet in the correct mounting location.
8. From below the deck, feed the Supply Tube (14) into the keyed Star Locking Washer (12) and Mounting Nut (13). Slide the Locking Washer and Mounting Nut up onto the Mounting Rod (9) and tighten the Mounting Nut on the Mounting Rod to securely lock the faucet to the deck.
9. Connect the Supply Tube (14) to the In-Line Filter Compression Fitting (15) and securely tighten.
10. Reinstall batteries and secure Battery holder Cover (3) with the Battery Holder Screws (2).
11. Reinstall Top Cover (1) and secure the faucet body with Cover Screw (7).
12. Turn water on and check for leaks. Place your hands under the faucet spout to activate water flow. Remove hands and water should stop.

Part Number Descriptions	
1. Top cover	9. Mounting rod
2. Battery holder screws (2)	10. Locking screw for supply tube
3. Battery holder cover	11. Rubber gasket
4. AA Alkaline Batteries (4)	12. Star locking washer
5. Battery holder	13. Mounting nut
6. Aerator	14. Supply tube
7. V.R. screw for top cover	15. In-line filter
8. Faucet body	16. Nylon washer

HYDROTEK INTERNATIONAL, INC.
 5055 Forsyth Commerce Rd. , Ste. 124
 Orlando, FL 32807
 1.800.922.9883 (Phone)
 1.866.670.5580 (Fax)
www.hydrotekintl.com