

Dolphin® Model Flushometer

120
120-1.6

► Description

Exposed Water Closet Flushometer, for floor mounted 1½" exposed back spud bowls. Specifically engineered for salt water and severe water conditions.

► Flush Cycle

☐ Model 120 (factory set at 3.5 gpf/13.2 Lpf)

☐ Model 120-1.6 (factory set at 1.6 gpf/6.0 Lpf)

Valve Adjustment Range: 0.5 gpf/1.9 Lpf to 16.0 gpf/60.6 Lpf

Factory settings made at 40 psi (275 kPa) — flush volume will vary with pressure and flow rate

► Specifications

Quiet, Exposed, Chrome Plated Closet Flushometer with the following features:

- Metal Lever Handle
- 1" I.P.S. Screwdriver Bak-Chek™ Angle Stop
- Vandal Resistant Stop Cap
- Adjustable Tailpiece
- Vacuum Breaker Flush Connection
- Spud Coupling and Flange for 1½" Back Spud
- Flushometer does not require water pressure to positively shut off
- High Copper, Low Zinc Brass Castings for Dezincification Resistance
- Non-Hold-Open Handle and No External Volume Adjustment to Ensure Water Conservation
- Handle Packing, Stop Seat and Vacuum Breaker to be Molded from PERMEX™ Rubber Compound for Chloramine Resistance

Valve Body, Cover, Tailpiece and Control Stop shall be in conformance with ASTM Alloy Classification for Red Brass. Valve shall be in compliance to the applicable sections of ASSE 1037.

► Variations

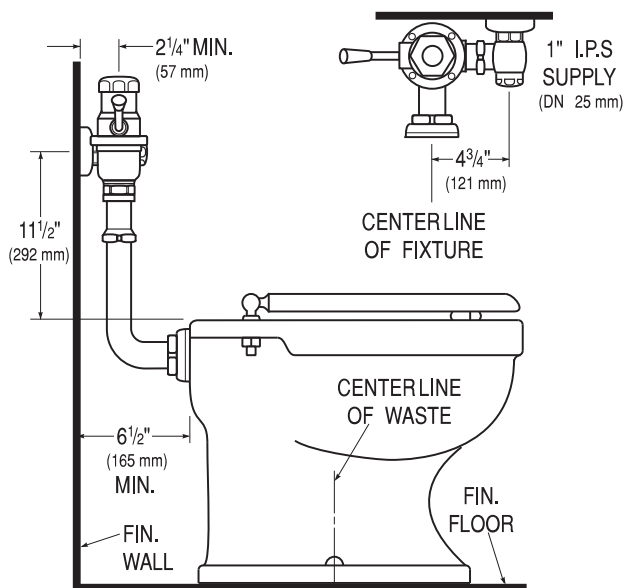
- | | |
|--------------------------------------|--|
| <input type="checkbox"/> GJ | Ground Joint Stop |
| <input type="checkbox"/> K | Wheel Handle Stop |
| <input type="checkbox"/> U | 1¼" Flush Connection and Spud Coupling |
| <input type="checkbox"/> YB | Sweat Solder Adapter Kit |
| <input type="checkbox"/> YBYC | Sweat Solder Adapter & Cast Set Screw Wall Flange |
| <input type="checkbox"/> YG | Extended Bumper on Angle Stop (for seat with cover) |
| <input type="checkbox"/> YO | Bumper on Angle Stop (for open front seat without cover) |
| <input type="checkbox"/> XYV | Less Vacuum Breaker |

NOTE: Bak-Chek Angle Stop available with 1" Whitworth Thread (please specify). Ground Joint Stop (GJ) recommended for salt water applications. Vacuum Breaker usually not required when used with non-potable water (specify XYV Variation).

► Accessories

See Accessories Section of the Sloan catalog for details on these and other Flushometer variations.

Made In The
USA



This space for Architect/Engineer approval

The information contained in this document is subject to change without notice.

SLOAN

SLOAN VALVE COMPANY • 10500 SEYMOUR AVE. • FRANKLIN PARK, IL. 60131

Ph: 1-800-9-VALVE-9 or 1-847-671-4300 • Fax: 1-800-447-8329 or 1-847-671-4380

<http://www.sloanvalve.com>