



ZURN Z6918 SERIES
SENSOR OPERATED LAVATORY FAUCETS

installation & maintenance guide

ZURN Z6918
(BATTERY INTERNAL TO SPOUT)



ZURN Z6918-EB
(BATTERY EXTERNAL TO SPOUT)



ZURN Z6918E
(EXTERNAL POWER CONVERTER)



Index

- 3** TECHNICAL DATA
- 4-5** PACK CONTENTS
 - Zurn Z6918
 - Zurn Z6918-EB and Zurn P6918-ACA
 - Zurn Z6918E and Zurn P6918-HW6
- 6** PRE INSTALLATION INFORMATION
- 7-8** FAUCET INSTALLATION
- 9-10** RANGE ADJUSTMENT
 - Adjusting the sensor range
 - Adjusting the sensor range with a remote control - optional
- 11-12** BATTERY REPLACEMENT INSTRUCTIONS
 - To replace the battery at Zurn Z6918 and Zurn Z6918-EB models
- 13** MAINTENANCE
 - Filter cleaning instructions
 - Care and cleaning of chrome and special finishes
- 13** SPARE PARTS LIST
- 14** TROUBLE-SHOOTING
- 15** LIMITED WARRANTY

T e c h n i c a l d a t a



ZURN Z6918 - Z6918-EB - Z6918E
Electronic Faucet for cold
or premixed water

P a c k c o n t e n t s

Familiarize yourself with the part names and confirm that the parts are included.

1. Zurn Z6918



1. 1x Tap and attachments
2. 1x Allen key
3. 1x Filter

2. Zurn Z6918-EB



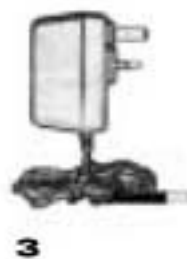
1. 1x Tap and attachments
2. 1x Filter
3. 1x Battery box
4. 2x Screws
5. 2x Wall plugs

P a c k c o n t e n t s

3. Zurn Z6918E



- 1. 1x Tap and attachments
- 2. 1x Filter
- 3. 1x Transformer



Pre-installation information

Check contents

Separate all parts from packaging and check each part with the Pack contents section.

Pay attention to the different models variations.

Make sure all parts are accounted for before discarding any packaging material.

If any parts are missing, do not attempt to install your Zurn electronic faucet until you obtain the missing parts.

Warnings

Do not install the faucet facing a mirror or any other electronic system operated by an infra-red sensor.

To prevent reflection problems, it is recommended to keep a minimum distance of 5 feet between the faucet and other objects.

Preparation for Installation

Flush water supply lines thoroughly before installing the faucet. Do not allow dirt, Teflon tape or metal particles to enter the faucet.

Shut off water supply.

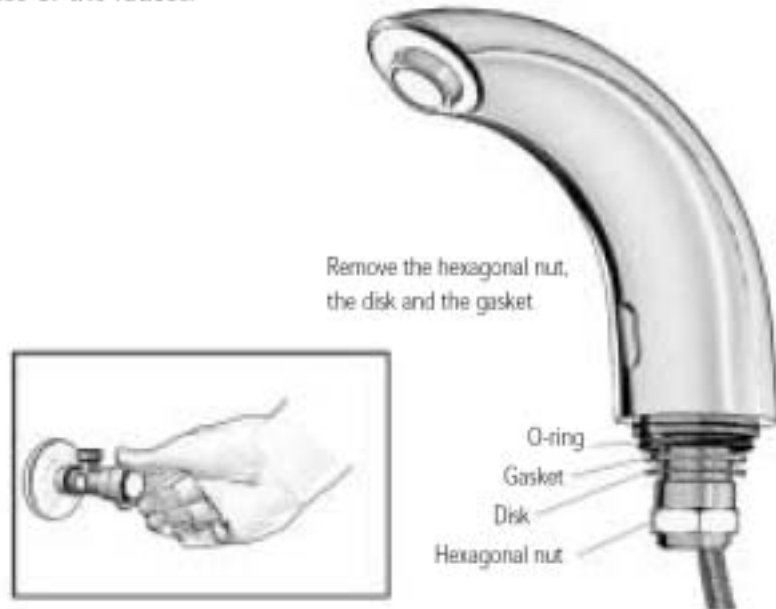
Important

All plumbing is to be installed in accordance with applicable codes and regulations.

F a u c e t i n s t a l l a t i o n

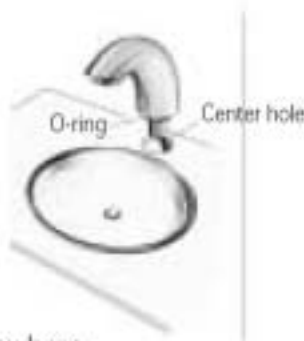
Step 1 - Remove all Mounting hardware

1. Shut off water supply and remove the hexagonal nut, the disk and the gasket. Do not remove the O-ring from the base of the faucet.



Step 2 - Installing the faucet

1. Place the faucet with O-ring into the hole in deck or lavatory. Make sure the O-ring is located between the deck or lavatory and the bottom of the faucet.



2. Slide gasket over flex hose.

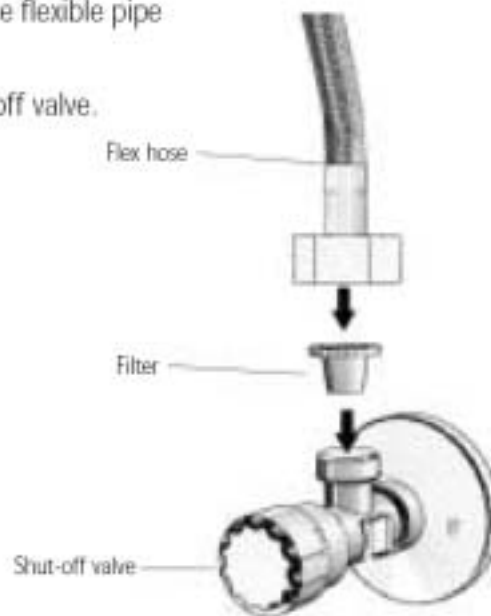


3. Secure the faucet to deck or lavatory with the hexagonal nut and the disk.

F a u c e t i n s t a l l a t i o n

Step 3 - Connecting the water supply

1. Connect the flexible pipe to the water supply.
2. Make sure that the filter is installed between the flexible pipe and the shut off valve (not supplied).
3. Turn on the central water supply and the shut-off valve.
4. Check for leaks.



Step 4 - Connecting the power source

1. Connect the power source:
 - a. For Zurn Z6918-EB: install the battery's box under the sink with the cable connection pointing down. (You can use an optional extension cable in order to assemble the battery box up to 10ft. away from the sink. See "Spare parts list")
 - b. For Zurn Z6918-E: Plug the Transformer into the electricity socket and connect the connectors.



2. Remove the sticker from the sensor.
3. Activate the faucet.
4. If the range is unsatisfactory, refer to the section entitled "Range adjustment"

Range adjustment

The sensor range is the greatest distance that an object can be from the sensor to activate the faucet. The sensor is factory preset. If necessary, it may be adjusted as follows:

Adjusting the sensor range:

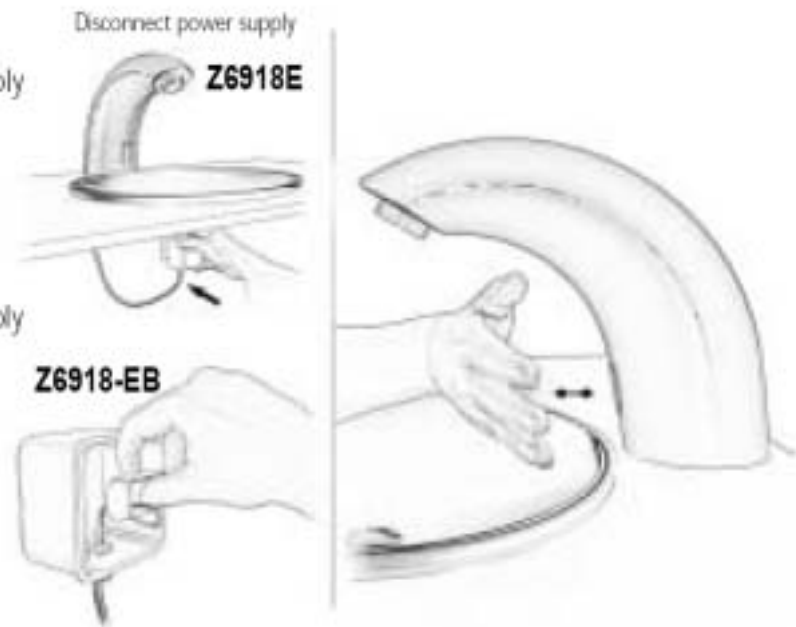
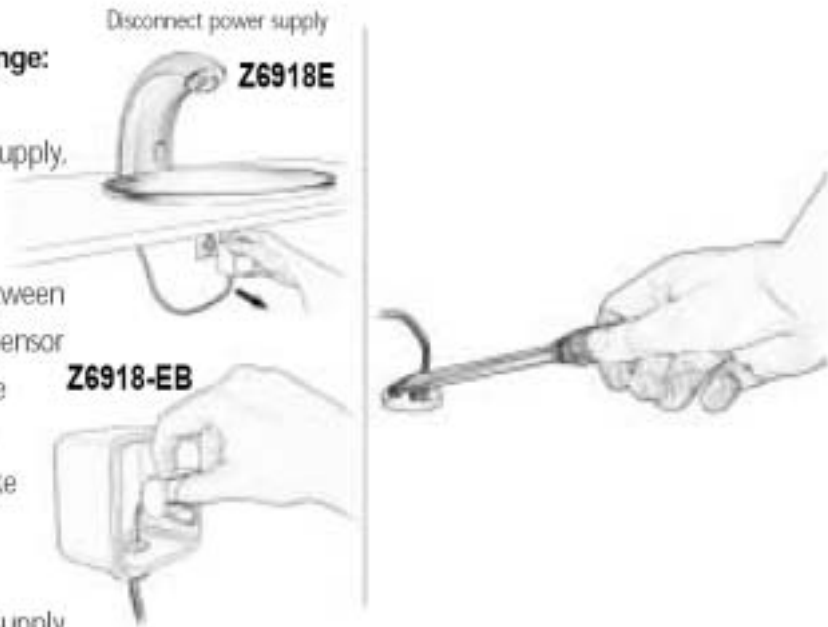
1. Disconnect the power supply, battery or transformer, from the sensor.
2. Make a short circuit between the (+) and the (-) of the sensor for 5 seconds. You can use a screw driver or another conductor material to make this short circuit.

Alternatively, after disconnecting the power supply, activate the sensor three or four times.

Do not make a short circuit on the power supply or on the sensor when the power supply is connected to the sensor.

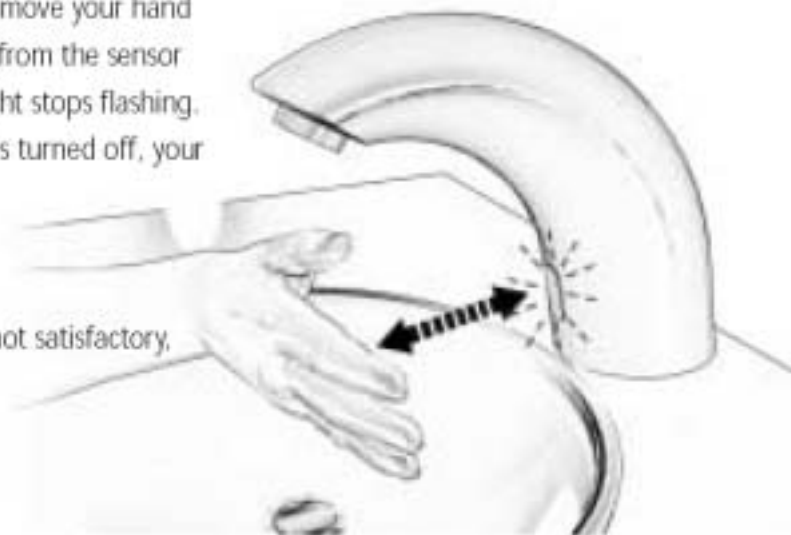
3. Reconnect the power supply to the sensor.

4. You have 5 seconds after reconnecting the power supply to the sensor to put your hand in front of the sensor at a distance of 2" (5cm) to 4" (10cm) from the sensor to enter into adjusting mode.



Range adjustment

- Note: If you do not put your hand against the sensor after connecting the power supply, the sensor will not enter adjusting mode and the previous setting will return.
- When the sensor enters adjusting mode and your hand is against the sensor, a slow flashing of the red light in the sensor eye will occur.
- You should keep your hand against the sensor until the slow flashing changes to quick flashing. At this point you should move your hand to the required distance from the sensor and wait until the red light stops flashing.
- When the red light has turned off, your sensor is adjusted to the new distance.
- Check the distance you have set and if it is not satisfactory, repeat steps 1-7.



Adjusting the sensor with a remote control - optional:

In order to adjust the sensor with a Remote Control you should hold the Remote Control straight against the sensor in a distance of about 4" (10cm). Choose the function you want to adjust by pressing once on one of the function buttons. After pressing once on a specific function button, a quick flashing of the red light in front of the sensor will occur. At this stage, you can change the adjustment by pressing the (-) or (+) buttons, every push will increase or decrease one level.

Range: Press + to increase detection range and - to decrease the detection range of the sensor.

The remote control may also be used to adjust:

Flow Time: Press + to increase the security time and - to decrease it.

Delay Out: Function available at remote control 7B only. Allows to change the time of water flow after the user's hands are removed.

On/Off: Press this function button and the faucet will remain off for 1 minute.

To cancel this function press the on/off button again.



Battery replacement instructions

Battery models only

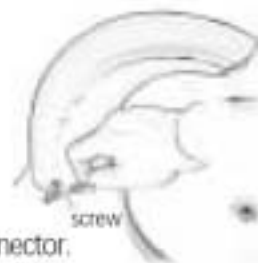
When the battery weakens, the red indicator light will blink at a constant rate. The battery must be replaced within two weeks.

To replace the battery at Zurn Z6918 model.

1. Turn Off the shut off valve.
2. Release screw and remove body.



4. Disconnect the connector from the electronic unit's connector.



5. Carefully push the sensor into the faucet's body to gain access to the battery and pull it together with the battery out of the body.



6. Replace the used battery with a new 9V battery. A Lithium battery is recommended.
7. Prior to reassembling the electronic unit and the battery, make sure that O-ring is still in its groove and not damaged. Replace it with a new one if needed. Clean and lubricate it with silicon grease.

Important: Check that the faucet is not wet when reassembling the electronic unit.

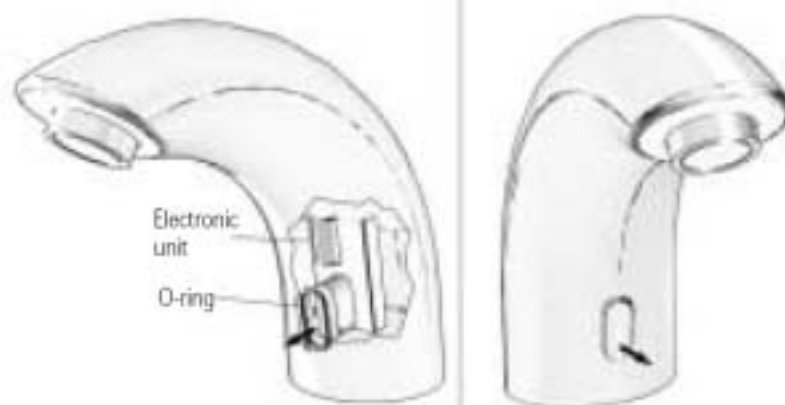
8. Carefully place the battery inside the body and reassemble the electronic unit in its place.

Be sure to insert the electronic unit all the way back into the opening in the faucet's body by pushing it moderately into the O-ring.

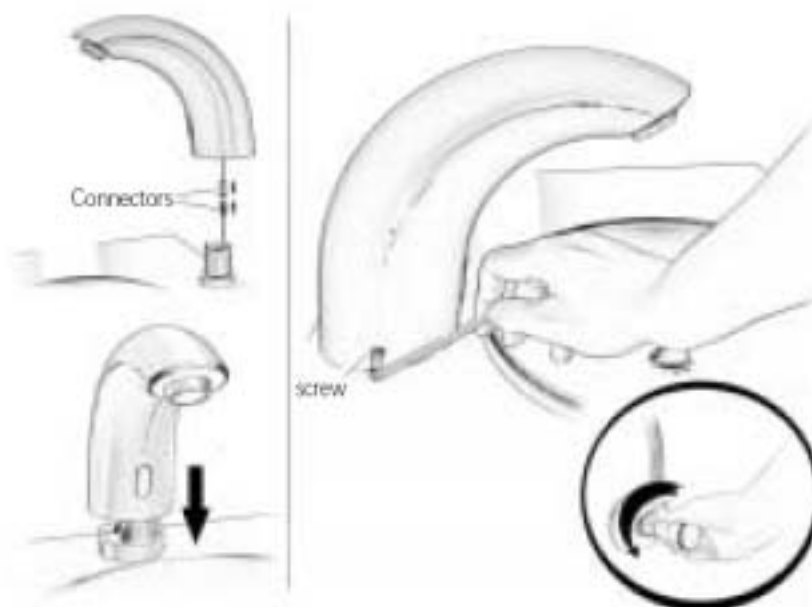
9. Swing the sensor gently to align it with its location. Be careful and make sure that you do not tear the O-ring. If torn replace it with a new one.



Battery replacement instructions



10. Reconnect the electronic unit's connector to the solenoid connector.
11. Place the body, and tighten screw and turn on the shut off valve.



To replace the battery at Zurn Z6918-EB

1. Carefully open the battery's box and remove the old battery, (lift the cover).
2. Replace the used battery with a new 9V battery (Lithium battery is recommended).
3. Close box.



M a i n t e n a n c e / s p a r e p a r t s

Filter cleaning instructions

This mixer is provided with a stainless steel filter preventing foreign particles to enter the lines. If the water flow has decreased, this may be because the filter is clogged. The filter can be cleaned as follows:

1. Shut-off the water shut off valve
2. Disconnect the flexible pipe.
3. Remove the filter and wash it under running water.
4. Reassemble the parts.
5. Reconnect the flexible pipe and restore the incoming water supply.
6. Make sure that there is no water leakage.

Care and cleaning of chrome and special finishes

DO NOT use steel wool or cleansing agents containing alcohol, acid, abrasives, or the like. Use of any prohibited cleaning or maintenance products or substances could damage the surface of the faucet. For surface cleaning of faucet use **ONLY** soap and water, then wipe dry with clean cloth or towel. When cleaning bathroom tile, the faucets should be protected from any splattering of harsh cleansers.

Spare Parts List

- | | |
|--|----------------|
| 1. Electronic unit (sensor) for ZURN Z6918 | P6918-B-L |
| Electronic unit (sensor) for ZURN Z6918-EB | P6918-B-L-EB |
| Electronic unit (sensor) for ZURN Z6918E | P6918-B-L-E |
| 2. Solenoid | P6918-100 |
| 3. Filter | P6918-120 |
| 4. 9 V Lithium battery | P6918-BAT-LITH |
| 5. 9 V Alkaline battery | P6918-BAT-ALK |
| 6. Battery box (EB Models only) | P6918-B-BD |
| 7. Transformer (E Models only) | P6918-PC9 |
| 8. Extension cable | P6918-EX |
| 9. Remote control 7 B (Optional) | P6918--RC |
| 10. Wrench for body housing | P6918-W-1 |

Trouble shooting

Problem	Indicator	Cause	Solution
No water coming out of the tap;	1. Sensor flashes continuously when user's hands are within the sensor's range. 2. Red light in the sensor does not flash when user's hands are within the sensor's range.	Low battery.	Replace battery.
		1. Inappropriate detection range 2. Battery is completely used up 3. Unit is in "Security Mode" ^{*)} 4. Sensor is picking up reflections from mirror or other object.	Adjust. The battery must be replaced.
	3. Red light in the sensor flashes when user's hands are within the sensor's range.	1. Connectors between the electronic unit and solenoid are disconnected. 2. Debris or scale in solenoid	Eliminate cause of reflection. Connect the electronic unit connectors to the solenoid.
		3. The central orifice in the diaphragm is plugged or the diaphragm is torn 4. The water supply pressure is higher than 100 psi	Unscrew solenoid, pull out the flanger and the spring from the solenoid and clean them. Use scale remover material if needed. When replacing the flanger, please make sure that the spring is in vertical position. Clean the orifice or replace diaphragm.
		5. The water supply pressure is under 100 psi and yet the pressure in the faucet's body is higher. This situation could be caused by a sudden increase in the water supply pressure that the back-check prevents from dropping, even after water supply pressure drops under 100 psi. Debris or scale in diaphragm (20) or the diaphragm is torn	Reduce the supply water pressure. Shut off water supply and unscrew one of the flexible pipes in order to reduce the pressure that is blocked in the product.
Water flow from spout does not stop;	1. Sensor flashes when user's hands are within the sensor's range. 2. Red light in the sensor does not flash when user's hands are within the sensor's range	1. Sensor is dirty or covered.	Clean the orifice or replace diaphragm. Clean or eliminate case of interference.
		2. Sensor is picking up reflections from mirror or another object.	1. Decrease the range or eliminate cause of reflection.
Water flow diminished		Filter or aerator is clogged	Remove, clean and reinstall.

Warranty

L I M I T E D W A R R A N T Y

This product is covered by a limited warranty for two years from date of purchase.

During this period, ZURN undertakes, at its option, to repair or replace any faults caused by defective materials or manufacturer defaults that may arise (see Zurn Warranty).

The guarantee does not cover faults or damage caused by incorrect installation and/or maintenance, wear and tear, battery, or water composition. This includes, but is not limited to the following:

- Incorrect installation, inversions of supply pipes;
- Pressures or temperatures exceeding recommended limits;
- Improper manipulation, tampering, bad or lapsed maintenance,
- Foreign bodies, dirt or scale introduced by the water supply



Zurn Industries, Inc.
Commercial Brass Operation
5900 Elwin Buchanan Drive
Sanford, NC 27330
Phone: 1-800-997-3876
Fax: 1-919-775-3541
www.zurn.com

