

SPECIFICATIONS

Model 97258C

Accessory Apron

GENERAL

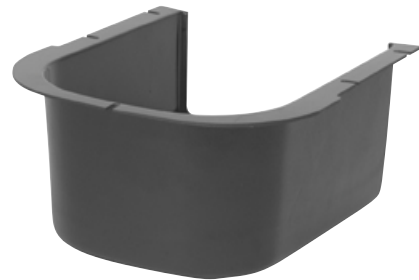
Accessory apron designed for compliance with the Americans with Disabilities Act (A.D.A.) in specific Bi-level applications when the units are mounted on an exposed wall. Accessory is applicable to Elkay ERFP, ERO and EDFP and Halsey Taylor HRF Bi-Level units. This apron provides the mandatory 27" (686 mm) floor to underside requirement for detection in a circulation path when properly installed.

CONSTRUCTION:

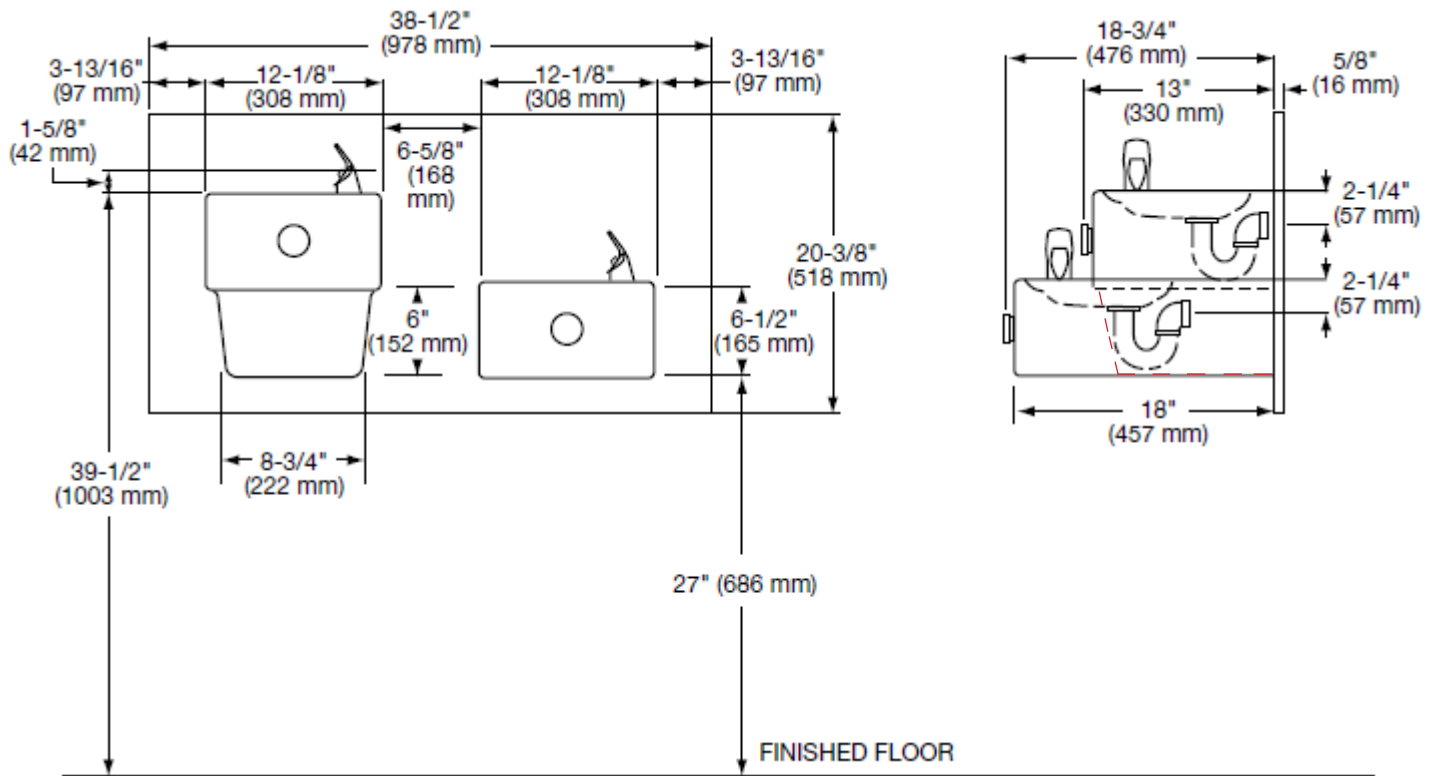
Thermo-formed textured ABS plastic. Neutral black color only.

Shipping Weight: 2 lbs.

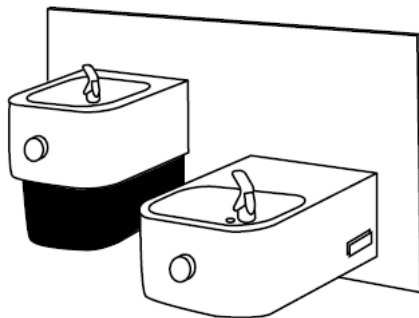
Use part #97258C when ordering



Style of unit may vary



Style of unit may vary



Note: Continued product improvement makes specification subject to change without notice.

Job Name: _____
_____ Qty. _____
Engineer/Contractor Name: _____
Approval: _____
Date: _____