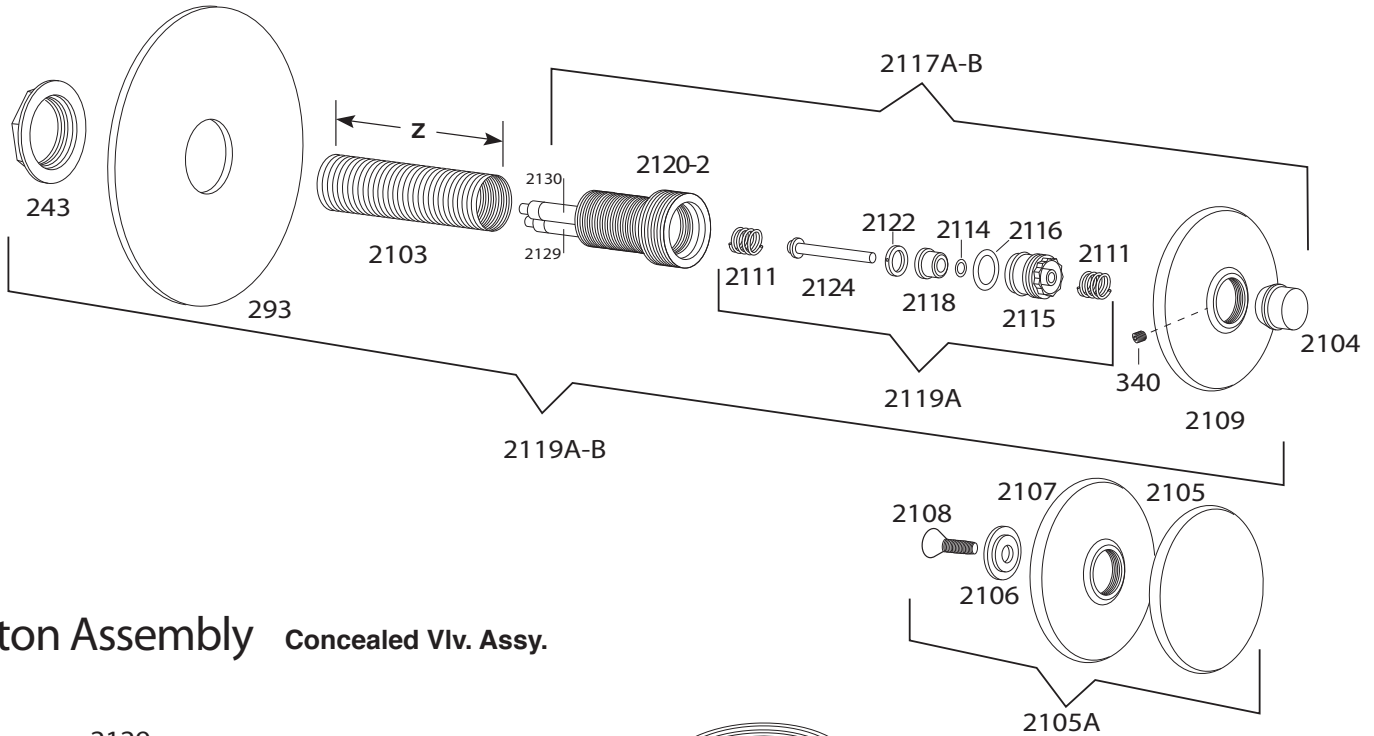


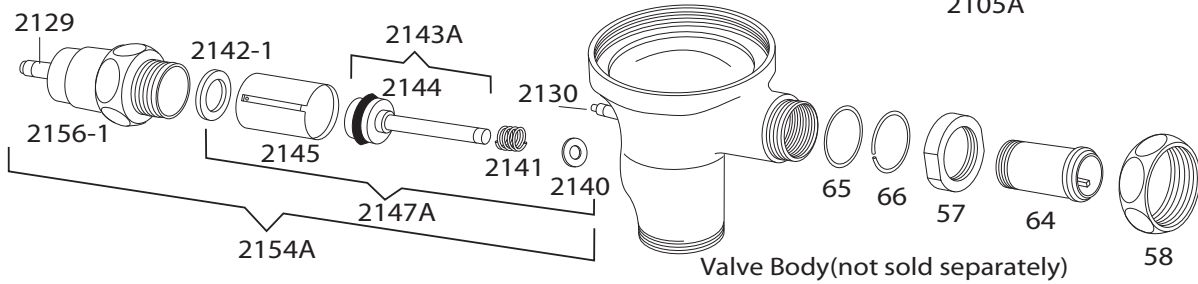
# ULTRA Plus & ULTRA Hydro-Flush

## Actuator Assembly

NOTE : For detailed internal valve parts information see ULTRA Plus & ULTRA or Empire valve Parts Breakdown



## Piston Assembly Concealed Vlv. Assy.



## Hydro-Flush Actuator

Partial Assemblies	
Part No.	Description
2105A	3" Oscillating Disc Assembly
2117A-B	Actuator Assembly (for 1/2" push button)
2117A-B-1	Actuator Assembly (with 124 sink flange)
2117A-C	Actuator Assembly (for 3" disc)
2119A	Internal Actuator Assembly
*2119A-B	Complete Actuator Assembly w/ nylon tubing (for 1/2" push button)
*2119A-B-1	Complete Actuator Assembly w/ nylon tubing for: F1223-GJ Vlv.( w/ 124 sink flange & 1/2" push button )
*2119A-C	Complete Actuator Assembly w/ nylon tubing w/ 3" disc )

\* Part No. changes depending on the wall thickness, specify wall size.

## Hydro-Flush Piston Assembly

Partial Assemblies	
Part No.	Description
2143A	Piston Operating Stem Assembly
2147A	Piston Internal Operating Assembly
2154A	Piston Valve Assembly

## Individual Parts Listing

57-RB	Clamping nut (Rough Brass)
58-RB	Union Nut (Rough Brass)
64-RB	KwikFit Union Tailpiece (Rough Brass), 2" length overall (allows 4-1/2" to 5-1.2" centers) Includes the No. 65 & No. 66 parts
65	"O" ring
66	Clamping ring
243	Locknut
293	Bearing plate
340	Set screw
*2103	Wall sleeve (for use with Conc. Hydro-Flush Vlv.)
2104	1/2" push button
2105	3" Oscillating disc
2106	Retainer for disc
2107	Wall flange (with No. 340 allen head set screw)
2108	Holding screw for disc
2109	Wall flange with set screw
2111	Spring (for push button)
2114	"O" ring for spindle
2115	Spindle guide
2116	"O" ring for spindle guide
2118	"O" ring holder
2120-2	Actuator body