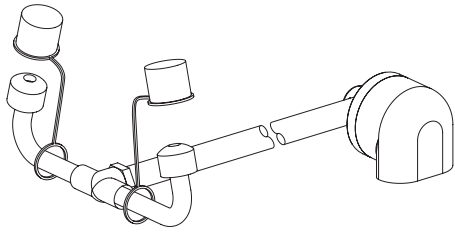


Installation

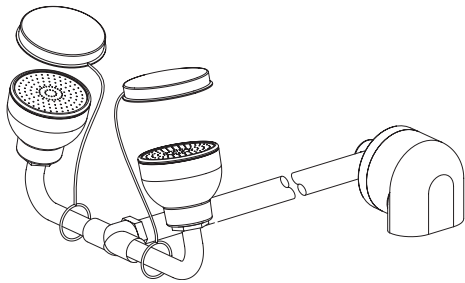
**S19-280D, S19-280W,
S19-290D, S19-290W,
S19274HDB, S19274HWB,
S19274JDB, S19274JWB**



Deck-mounted eyewash (S19-280D) is shown.
Wall-mounted eyewash (S19-280W) is similar.

Une douche oculaire qui est montée au comptoir (S19-280D) est montrée.
Une douche oculaire qui est montée au mur (S19-280W) est similaire.

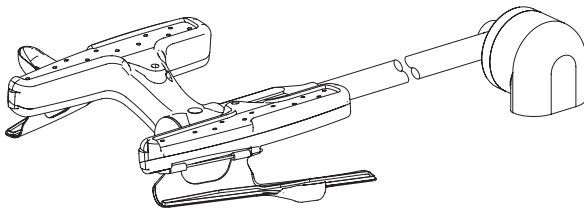
Se muestra una lavador de ojos que se monta a la mostrador (S19-280D).
Un lavador de ojos que se monta a la mostrador (S19-280W) es similar.



Deck-mounted eye/face wash (S19-290D) is shown.
Wall-mounted eye/face wash (S19-290W) is similar.

Une douche oculaire/ faciale qui est montée au comptoir (S19-290D) est montrée.
Une douche oculaire/ faciale qui est montée au mur (S19-290W) est similaire.

Se muestra una lavador de ojos/rostro que se monta a la mostrador (S19-290D).
Un lavador de ojos/rostro que se monta a la mostrador (S19-290W) es similar.



Deck-mounted Halo™ eye/face wash (S19274JDB) is shown.
Wall-mounted Halo™ eye/face wash (S19274JWB) is similar.

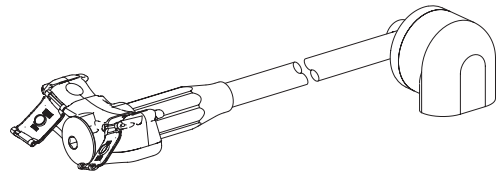
Une douche oculaire/ faciale Halo™ qui est montée au comptoir (S19274JDB) est montrée.
Une douche oculaire/ faciale Halo™ qui est montée au mur (S19274JWB) est similaire.

Se muestra una lavador de ojos/rostro Halo™ que se monta a la mostrador (S19274JDB).
Un lavador de ojos/rostro Halo™ que se monta a la mostrador (S19274JWB) es similar.

**Barrier Free Swing-Down Eyewash and Eye/Face
Wash Units, Wall and Deck Mount**

**Douche oculaire et oculaire/ faciale sans barrière,
activée par bras mobile, support de mur ou de
comptoir**

**Lavador de ojos y de ojos/rostro con fácil acceso,
activado por brazo oscilante, montaje de la pared
o de mostrador**



Deck-mounted Halo™ eyewash (S19274HDB) is shown.
Wall-mounted Halo™ eyewash (S19274HWB) is similar.

Une douche oculaire Halo™ qui est montée au comptoir
(S19274HDB) est montrée. Une douche oculaire Halo™
qui est montée au mur (S19274HWB) est similaire.

Se muestra una lavador de ojos Halo™ que se monta a la
mostrador (S19274HDB). Un lavador de ojos Halo™ que
se monta a la mostrador (S19274HWB) es similar.

Table of Contents

| | |
|---|----|
| Pre-Installation Information | 3 |
| S19-280D, S19-280W, S19274HDB, S19274HWP Dimensions | 4 |
| S19-290D, S19-290W, S19274JDB, S19274JWB Dimensions | 5 |
| Installation | 6 |
| S19-280D, S19-280W Assembly of Components | 7 |
| S19274HDB, S19274HWP Assembly of Components | 8 |
| S19-280D, S19-280W, S19274HDB, S19274HWP Parts List | 9 |
| S19-290D, S19-290W Assembly of Components | 10 |
| S19274JDB, S19274JWB Assembly of Components | 11 |
| S19-290D, S19-290W, S19274JDB, S19274JWB Parts List | 12 |

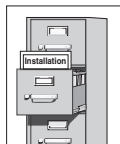
Table des matières

| | |
|---|----|
| Avant l'installation | 13 |
| S19-280D, S19-280W, S19274HDB, S19274HWP Dimensions | 14 |
| S19-290D, S19-290W, S19274JDB, S19274JWB Dimensions | 15 |
| Installation | 16 |
| S19-280D, S19-280W Assemblage des composantes | 17 |
| S19274HDB, S19274HWP Assemblage des composantes | 18 |
| S19-280D, S19-280W, S19274HDB, S19274HWP liste des pièces | 19 |
| S19-290D, S19-290W Assemblage des composantes | 20 |
| S19274JDB, S19274JWB Assemblage des composantes | 21 |
| S19-290D, S19-290W, S19274JDB, S19274JWB liste des pièces | 22 |

Contenido

| | |
|--|----|
| Información previa a la instalación | 23 |
| S19-280D, S19-280W, S19274HDB, S19274HWP Dimensiones | 24 |
| S19-290D, S19-290W, S19274JDB, S19274JWB Dimensiones | 25 |
| Instalación | 26 |
| S19-280D, S19-280W Armado de los componentes | 27 |
| S19274HDB, S19274HWP Armado de los componentes | 28 |
| S19-280D, S19-280W, S19274HDB, S19274HWP lista de piezas | 29 |
| S19-290D, S19-290W Armado de los componentes | 30 |
| S19274JDB, S19274JWB Armado de los componentes | 31 |
| S19-290D, S19-290W, S19274JDB, S19274JWB lista de piezas | 32 |

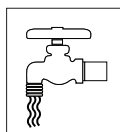
⚠ IMPORTANT ⚠



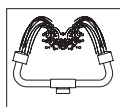
Read this installation manual completely to ensure proper installation, then file it with the owner or maintenance department. Compliance and conformity to drain requirements and other local codes/ordinances is the responsibility of the installer.



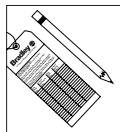
Separate parts from packaging and make sure all parts are accounted for before discarding any packaging material. If any parts are missing, do not begin installation until you obtain the missing parts.



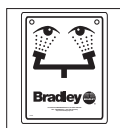
Flush the water supply lines before beginning installation and after installation is complete. Test the unit for leaks and adequate water flow. Main water supply to the eyewash should be "ON" at all times. Provisions shall be made to prevent unauthorized shutoff.



The ANSI Z358.1 standard requires an uninterrupted supply of flushing fluid. Bradley plumbed emergency fixtures require a minimum of 30 PSI (0.21 MPa) flowing pressure. Flushing fluid should be tepid per ANSI Z358.1.



The inspection and testing results of this equipment should be recorded weekly to verify proper operation. This equipment should be inspected annually to ensure compliance with ANSI Z358.1.



Workers who may come in contact with potentially hazardous materials should be trained regarding the placement and proper operation of emergency equipment per ANSI Z358.1.



For questions regarding the operation or installation of this product, visit bradleycorp.com or call 800-BRADLEY (800.272.3539).

Product warranties may also be found under "Products" on our web site at bradleycorp.com.

NOTICE! For classic eye/face wash units, avoid cleaners containing organic solvents, alcohols, and hydrocarbons. Rinse with water after cleaning.

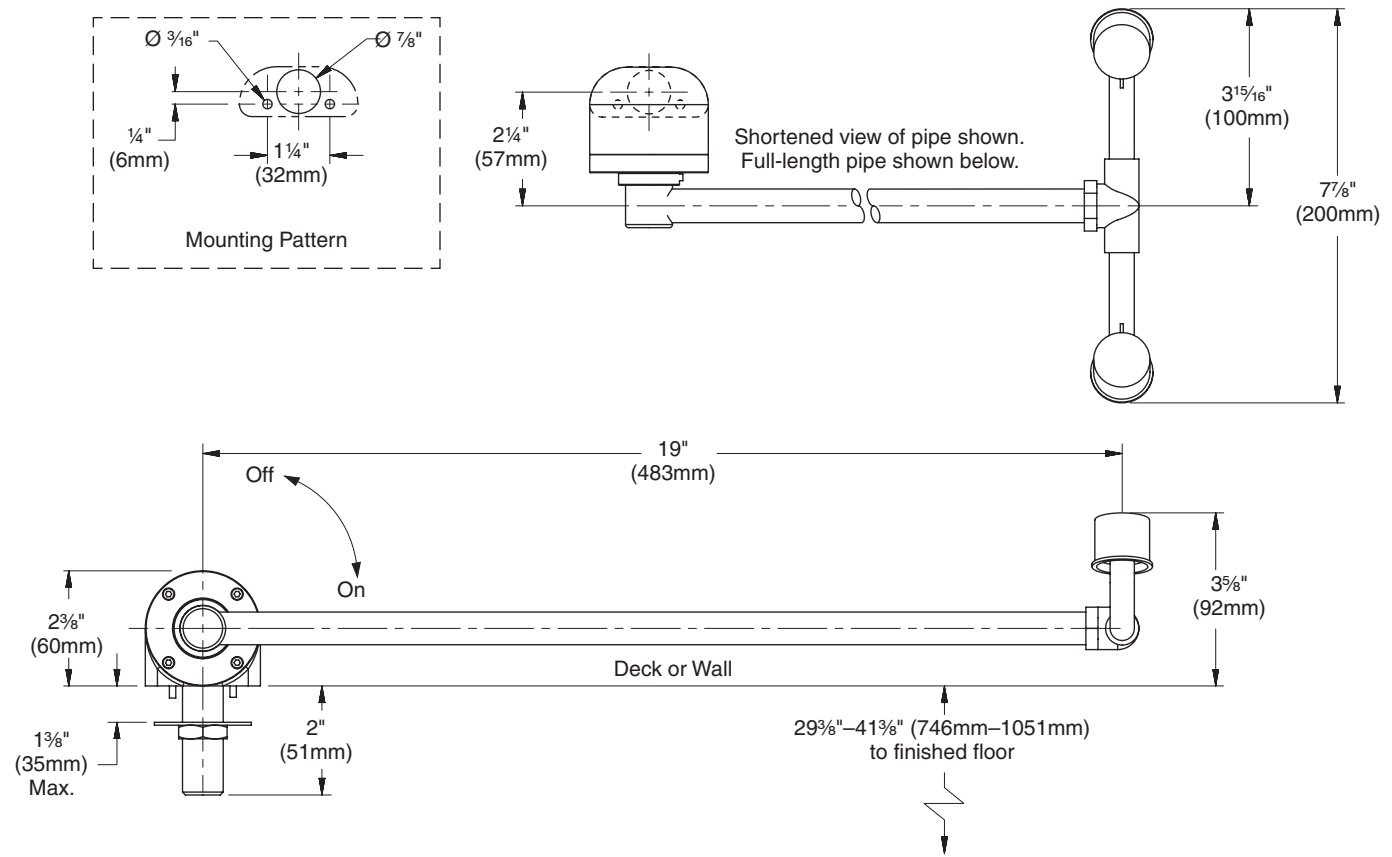
Supplies Required:

- Piping to ½" NPT water supply inlet on unit
- Pipe sealant
- Sign-mounting hardware

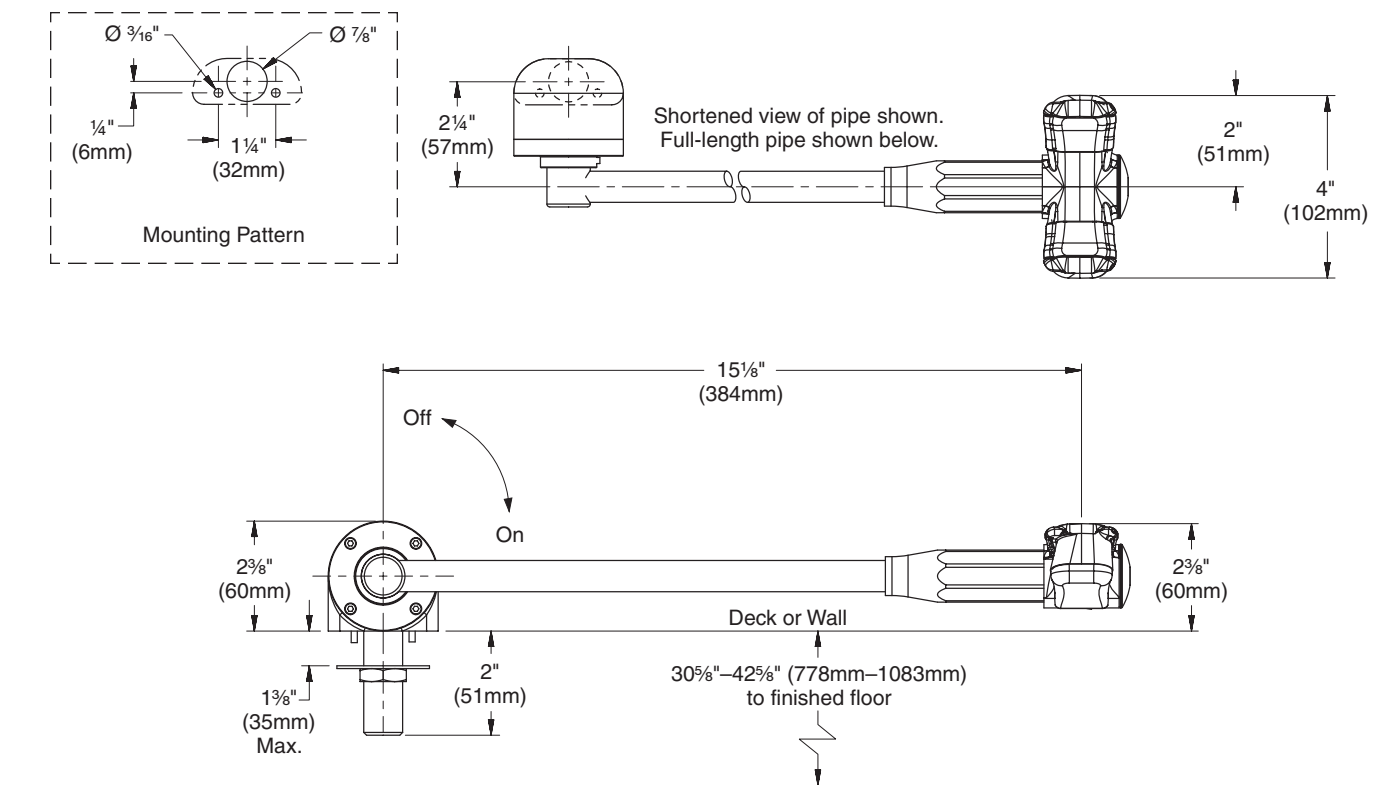


Local codes may require the installation of a backflow prevention valve to complete proper installation. Compliance with local codes is the responsibility of the installer. Valve must be tested annually to verify that it is functioning properly. Backflow prevention valves are not included with the fixture and may be supplied by the contractor or purchased from Bradley Corporation.

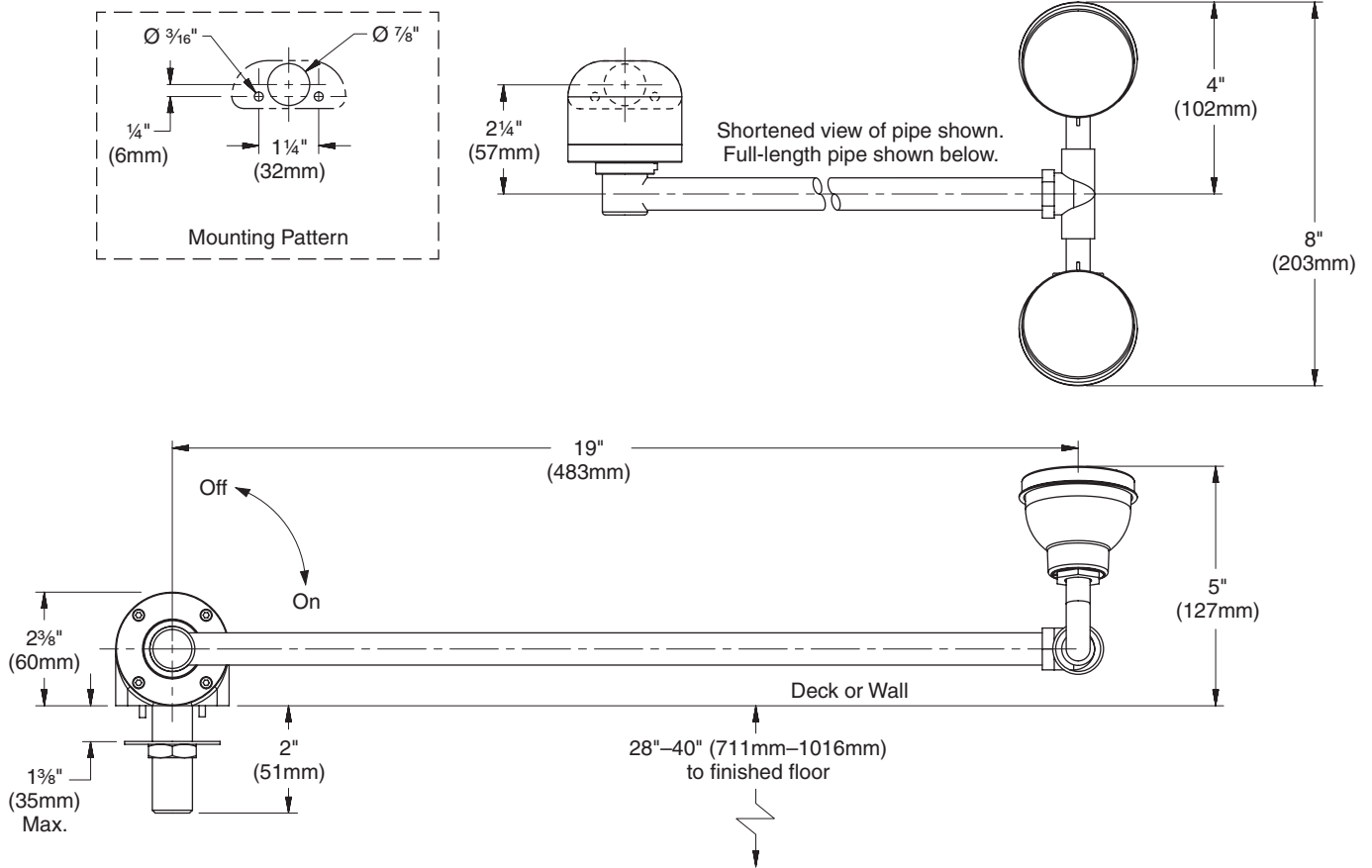
Dimensions — S19-280D, S19-280W (deck-mounted unit shown)



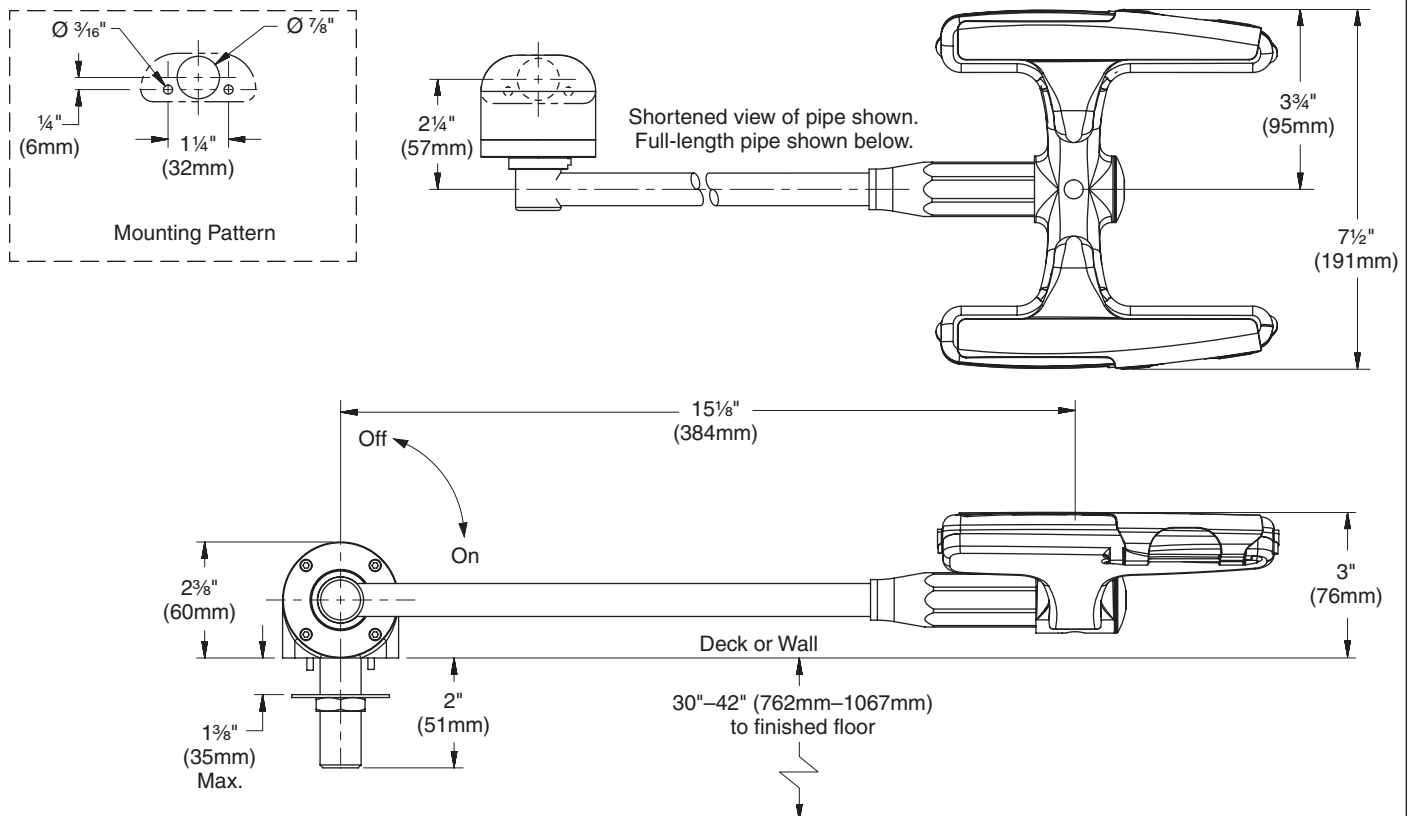
Dimensions — S19274HDB, S19274HWB (deck-mounted unit shown)



Dimensions — S19-290D, S19-290W (deck-mounted unit shown)



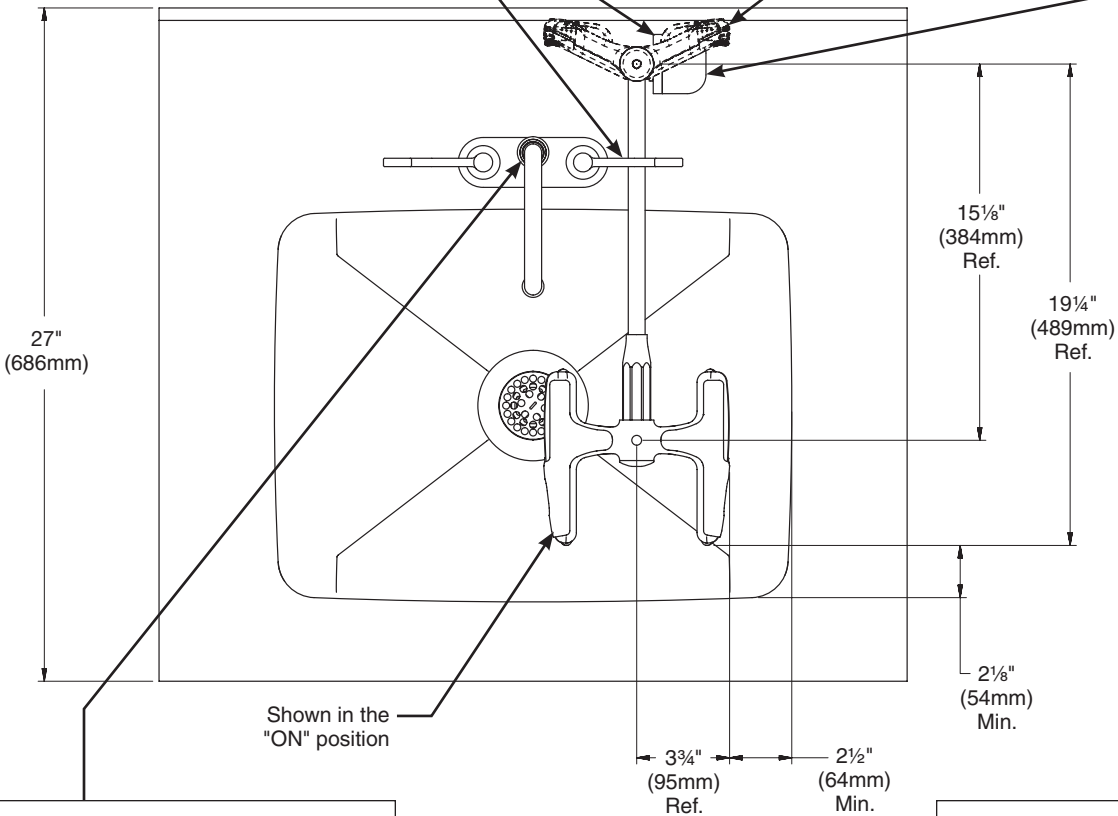
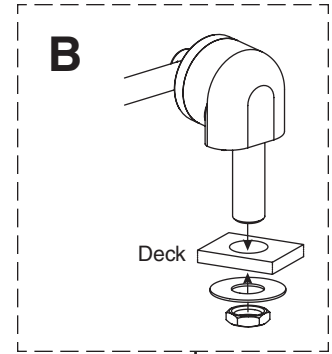
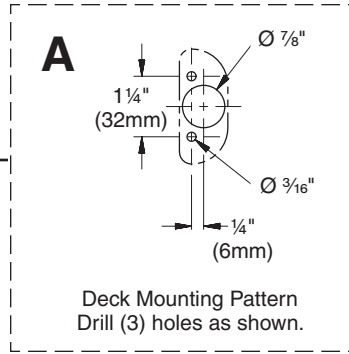
Dimensions — S19274JDB, S19274JWB (deck-mounted unit shown)



Installation

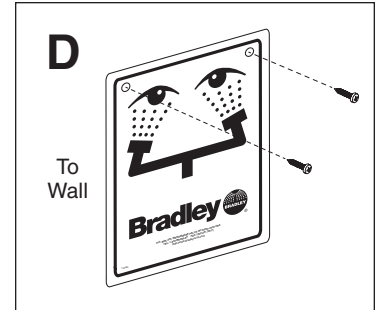
- ✓ Halo eye/face wash unit is shown on a sample 27" (686mm) deck. Other units are similar.
- ✓ Minimum dimensions necessary to contain splashing from Halo units are shown.
- ✓ Apply pipe sealant (supplied by installer) to all male-threaded pipe joints. The top of the eyewash heads should be positioned a minimum of 33" (838mm) and a maximum of 45" (1143mm) from the floor and 6" (152mm) from the nearest obstruction.

- ✓ Proper faucet shank/handle clearance and recommended minimum splash containment dimensions must be considered when selecting the desired location for mounting.



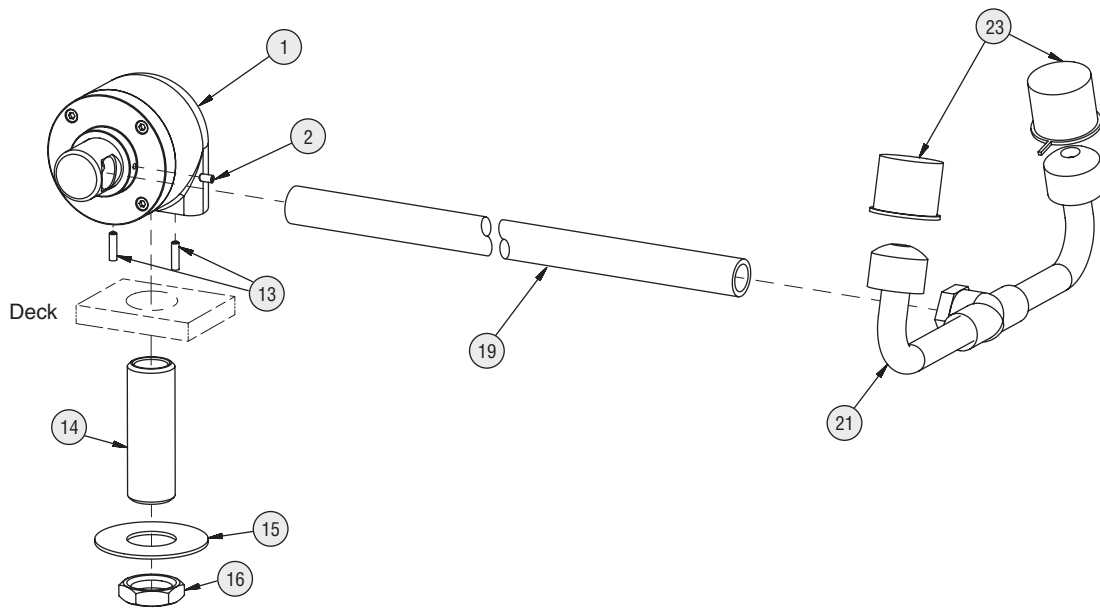
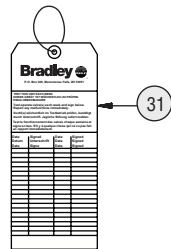
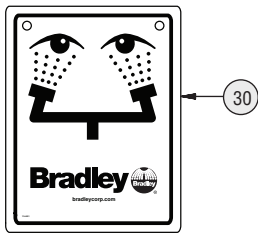
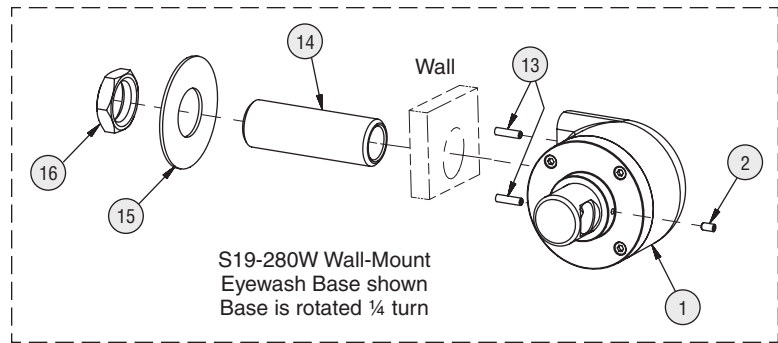
C Connect the water supply using piping (supplied by installer) with 1/2" NPT female threaded end.

E Slowly open the water supply lines to relieve air and pressurize the valve. Test the unit for leaks and adequate flow.



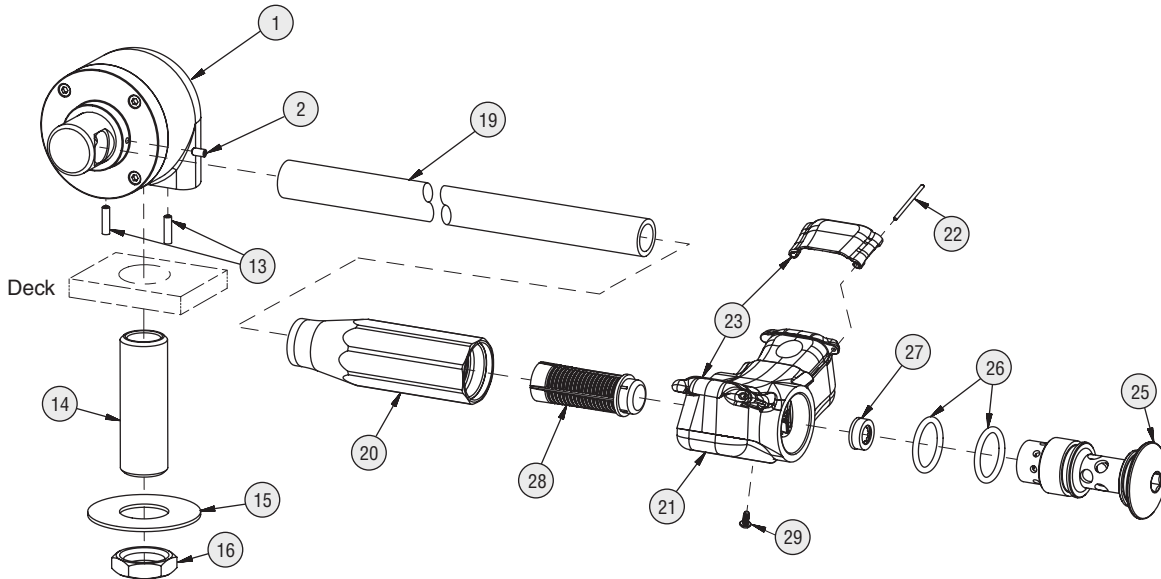
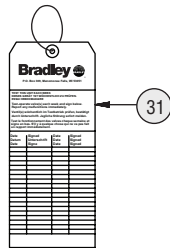
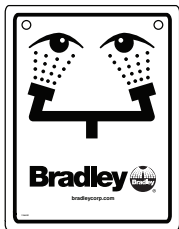
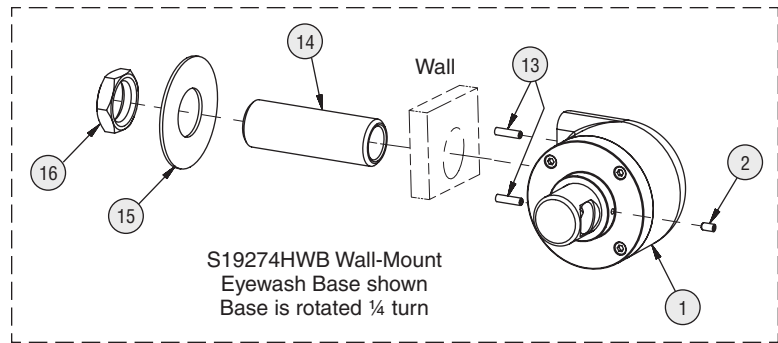
Assembly of Components — S19-280D, S19-280W

Shown in the "ON" position.

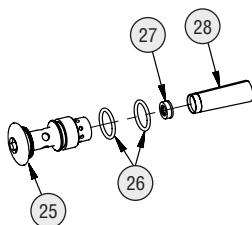


Assembly of Components — S19274HDB, S19274HWB

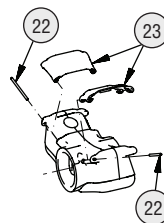
Shown in the "ON" position.



Prepack S65-339 includes items 26, 27, 28
Prepack S88-068 includes items 25, 26, 27, 28



Eyewash Cover Prepack
S45-2675 includes items
22 and 23



Parts List — S19-280D, S19-280W

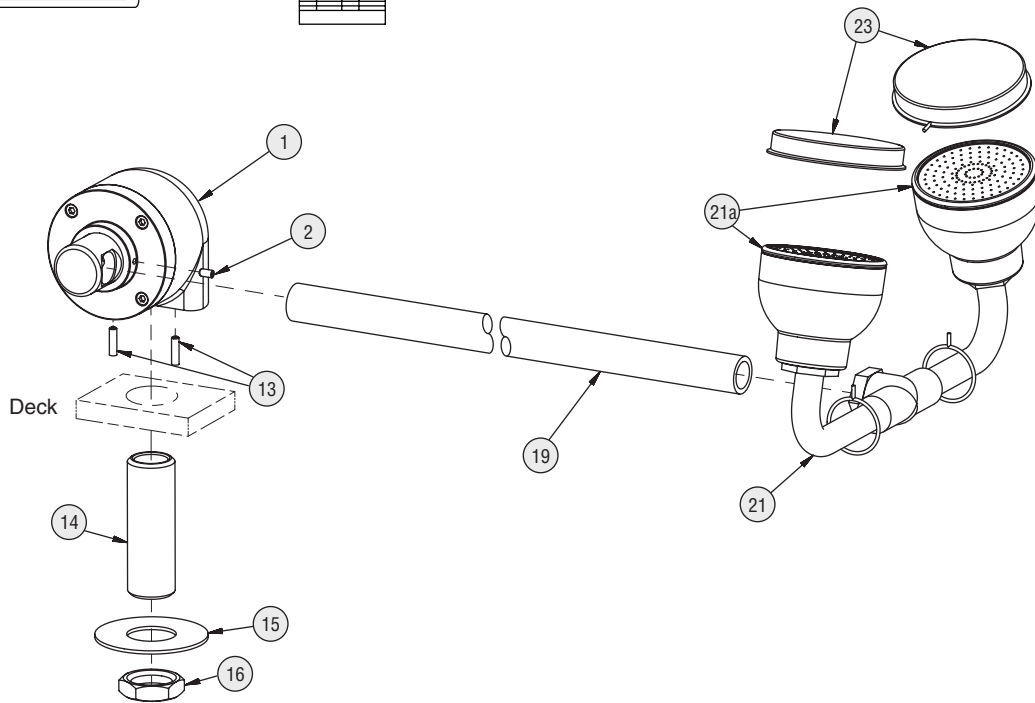
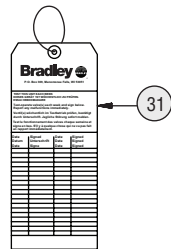
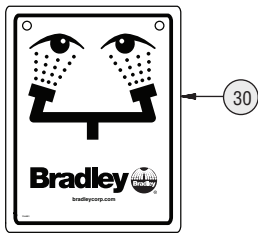
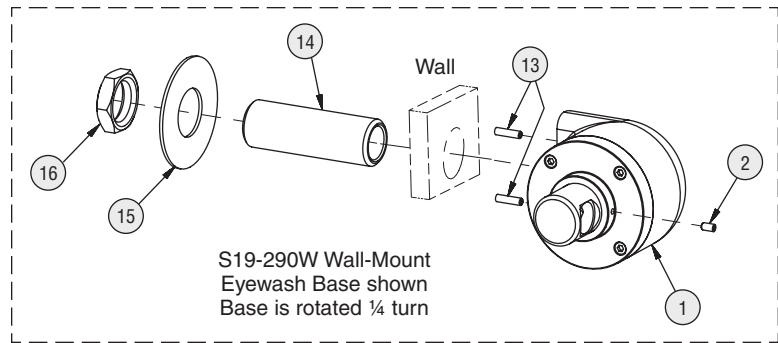
| Item | Part No. | Qty | Description | Item | Part No. | Qty | Description |
|------|-----------|-----|--|------|----------|-----|--------------------------------|
| 1 | S65-386CE | 1 | Replacement Valve Assembly, Swing-Down Classic Eyewash, Deck-Mount | 16 | 110-115 | 1 | Nut, Brass ½"-14 NPSM |
| 1 | S65-387CE | 1 | Replacement Valve Assembly, Swing-Down Classic Eyewash, Wall-Mount | 19 | 113-1125 | 1 | Pipe, ⅜" x 18½" Polished Brass |
| 2 | 160-473 | 1 | Screw, Set | 21 | S05-092 | 1 | Eyewash Yoke 90° |
| 13 | 160-474 | 2 | Screw, Set | 23 | 107-371 | 2 | Tethered Dust Cover |
| 14 | 113-514 | 1 | Shank, ½" x 2½" | 30 | 114-051 | 1 | Safety Sign |
| 15 | 142-002CB | 1 | Washer, Flat ⅞" x 2" | 31 | 204-421 | 1 | Emergency Inspection Tag |

Parts List — S19274HDB, S19274HWB

| Item | Part No. | Qty | Description | Item | Part No. | Qty | Description |
|------|-----------|-----|--|------|----------------|-----|------------------------------------|
| 1 | S65-386 | 1 | Replacement Valve Assembly, Swing-Down, Deck-Mount | 21 | S05-190 | 1 | Sprayhead Ass'y Eyewash (includes) |
| 1 | S65-387 | 1 | Replacement Valve Assembly, Swing-Down, Wall-Mount | 22 | in service kit | 2 | Pivot Pin |
| 2 | 160-473 | 1 | Screw, Set | 23 | in service kit | 2 | Flip Cover, Eyewash |
| 13 | 160-474 | 2 | Screw, Set | 25 | 115-158 | 1 | Cap |
| 14 | 113-514 | 1 | Shank, ½" x 2½" | 26 | 125-157 | 2 | O-Ring |
| 15 | 142-002CB | 1 | Washer, Flat ⅞" x 2" | 27 | 125-175 | 1 | Flow Control |
| 16 | 110-115 | 1 | Nut, Brass ½"-14 NPSM | 28 | S65-340 | 1 | Screen (incl. 3 per pack) |
| 19 | 113-1230 | 1 | Pipe, ⅜" x 11¼" Chrome Red Brass | 29 | 160-500 | 1 | Screw, Weep |
| 20 | 171-006 | 1 | Body, Mount ⅜" NPT Female | 30 | 114-051 | 1 | Safety Sign |
| | | | | 31 | 204-421 | 1 | Emergency Inspection Tag |

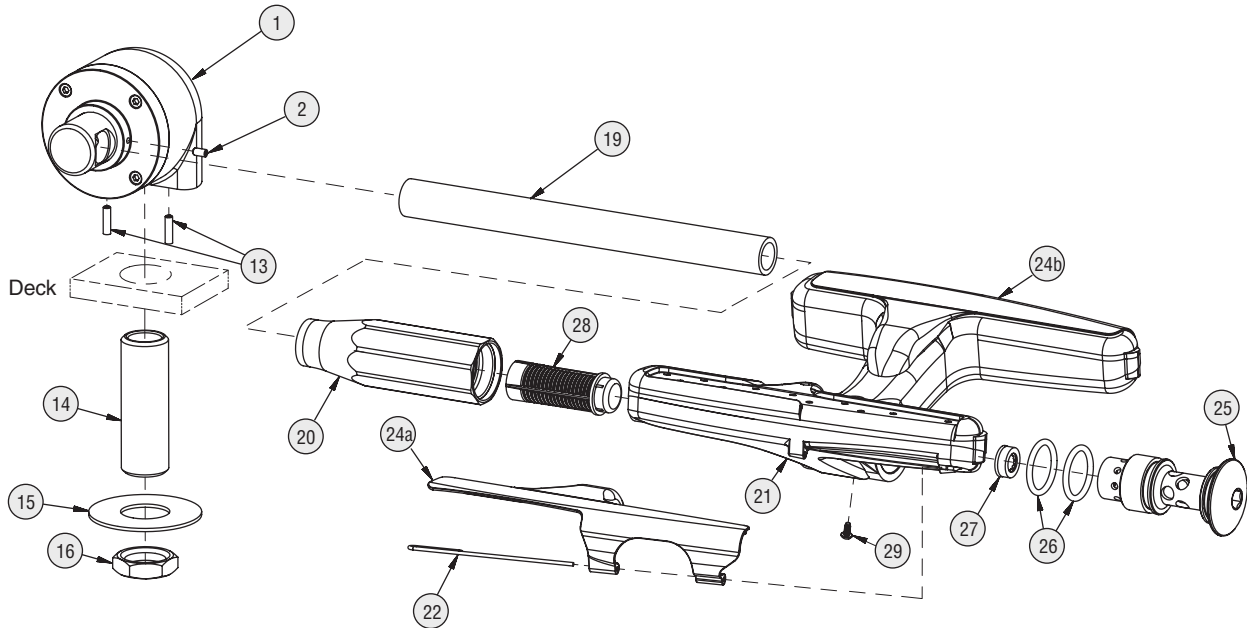
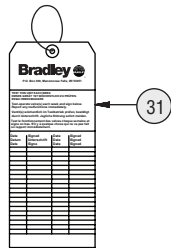
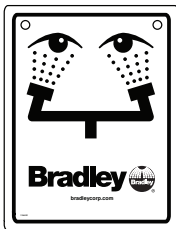
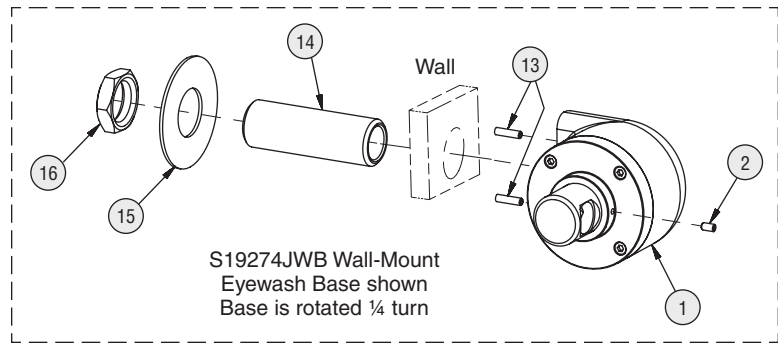
Assembly of Components — S19-290D, S19-290W

Shown in the "ON" position.

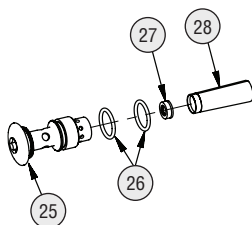


Assembly of Components — S19274JDB, S19274JWB

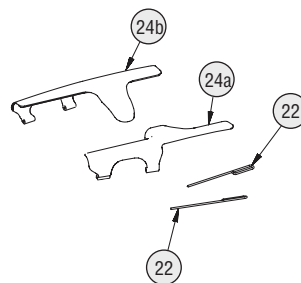
Shown in the "ON" position.



Prepack S65-339 includes items 26, 27, 28
Prepack S88-068 includes items 25, 26, 27, 28



Eye/Face Wash Cover
Prepack S45-2676 includes items 22, 24a and 24b



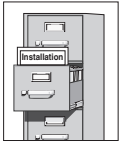
Parts List — S19-290D, S19-290W

| Item | Part No. | Qty | Description | Item | Part No. | Qty | Description |
|------|-----------|-----|--|------|----------|-----|------------------------------------|
| 1 | S65-386 | 1 | Replacement Valve Assembly, Swing-Down, Deck-Mount | 16 | 110-115 | 1 | Nut, Brass ½"-14 NPSM |
| 1 | S65-387 | 1 | Replacement Valve Assembly, Swing-Down, Wall-Mount | 19 | 113-1125 | 1 | Pipe, ⅜" x 18½" Polished Brass |
| 2 | 160-473 | 1 | Screw, Set | 21 | S05-206 | 1 | Eye/Face Wash Assembly |
| 13 | 160-474 | 2 | Screw, Set | 21A | S45-2453 | 1 | Service Kit EFW - Black Sprayheads |
| 14 | 113-514 | 1 | Shank, ½" x 2½" | 23 | S53-063 | 2 | Tethered Dust Cover |
| 15 | 142-002CB | 1 | Washer, Flat ⅞" x 2" | 30 | 114-051 | 1 | Safety Sign |
| | | | | 31 | 204-421 | 1 | Emergency Inspection Tag |

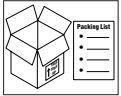
Parts List — S19274JDB, S19274JWB

| Item | Part No. | Qty | Description | Item | Part No. | Qty | Description |
|------|-----------|-----|--|------|----------------|-----|---------------------------|
| 1 | S65-386 | 1 | Replacement Valve Assembly, Swing-Down, Deck-Mount | 22 | in service kit | 2 | Pivot Pin |
| 1 | S65-387 | 1 | Replacement Valve Assembly, Swing-Down, Wall-Mount | 24a | in service kit | 1 | Flip Cover, Right |
| 2 | 160-473 | 1 | Screw, Set | 24b | in service kit | 1 | Flip Cover, Left |
| 13 | 160-474 | 2 | Screw, Set | 25 | 115-158 | 1 | Cap |
| 14 | 113-514 | 1 | Shank, ½" x 2½" | 26 | 125-157 | 2 | O-Ring |
| 15 | 142-002CB | 1 | Washer, Flat ⅞" x 2" | 27 | 125-175 | 1 | Flow Control |
| 16 | 110-115 | 1 | Nut, Brass ½"-14 NPSM | 28 | S65-340 | 1 | Screen (incl. 3 per pack) |
| 19 | 113-1230 | 1 | Pipe, ⅜" x 11¼" Chrome Red Brass | 29 | 160-500 | 1 | Screw, Weep |
| 20 | 171-006 | 1 | Body, Mount ⅜" NPT Female | 30 | 114-051 | 1 | Safety Sign |
| 21 | S05-192 | 1 | Sprayhead Ass'y Eye/Face Wash (incl.) | 31 | 204-421 | 1 | Emergency Inspection Tag |

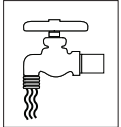
⚠ IMPORTANT ⚠



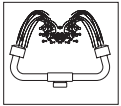
Lire ce manuel d'installation dans son intégralité pour garantir une installation appropriée. Une fois celle-ci terminée, classer ce manuel auprès du service à la clientèle ou d'entretien. L'installateur est responsable de la conformité de l'installation aux codes pour des drain et codes et règlements en vigueur.



Assurez-vous que toutes les pièces sont incluses dans l'emballage et qu'il n'en manque aucune avant de jeter l'emballage. Ne commencez pas l'assemblage avant de recevoir les pièces manquantes.



Rincez la conduite d'alimentation avant et après l'installation. Assurez-vous que le débit d'eau est adéquat et qu'il n'y a pas de fuites. L'alimentation principale en eau doit être toujours OUVERTE. On devra prévoir des dispositions pour empêcher tout arrêt non autorisé.



La norme ANSI Z358.1 prévoit une alimentation ininterrompue du liquide de rinçage. Les appareils d'urgence Bradley raccordés au réseau nécessitent une pression d'écoulement d'au moins 30 PSI (0,21 MPa). Selon ANSI Z358.1, le liquide de rinçage doit être tiède.



Inspectez et testez cet équipement une fois par semaine pour en assurer le bon fonctionnement. Notez les dates d'inspection. Ce matériel doit être inspecté une fois par an pour assurer sa conformité à la norme ANSI Z358.1.



Les ouvriers susceptibles d'entrer en contact avec des matières potentiellement dangereuses doivent recevoir une formation sur la mise en place et le bon fonctionnement du matériel d'urgence conformément à la norme ANSI Z358.1.



Pour toute question concernant le fonctionnement ou l'installation de ce produit, consulter le site www.bradleycorp.com ou appeler le 800.BRADLEY (800.272.3539).

Les garanties de produits figurent sous la rubrique « Produits » sur notre site Internet à www.bradleycorp.com.

AVIS ! Pour les classiques unités de douche oculaire/ faciale, éviter les nettoyants qui contiennent des solvants organiques, de l'alcool et de l'hydrocarbure. Rincer avec de l'eau après le nettoyage.

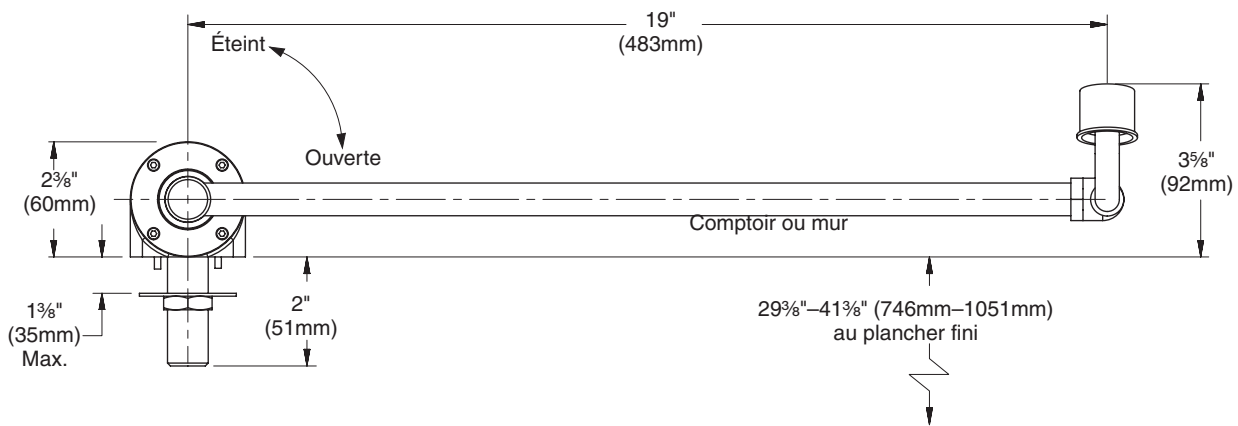
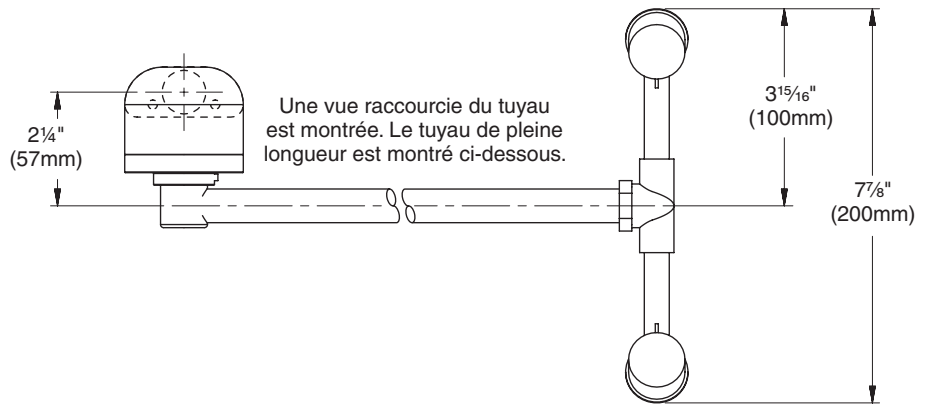
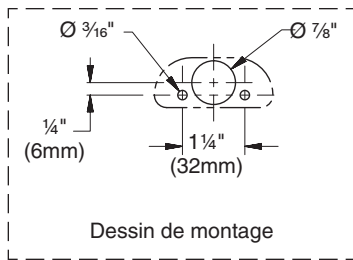
Equipements nécessaires :

- Amener la tuyauterie à l'entrée ½" NPT d'approvisionnement en eau de la douche oculaire
- Produit d'étanchéité pour tuyau
- Quincaillerie pour l'installation de l'enseigne

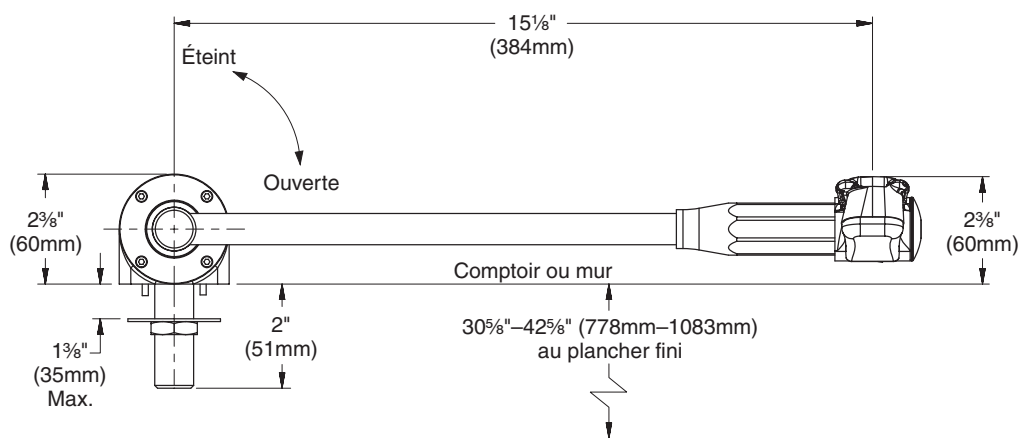
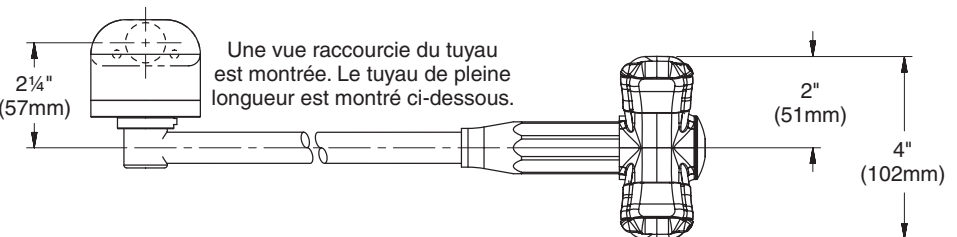
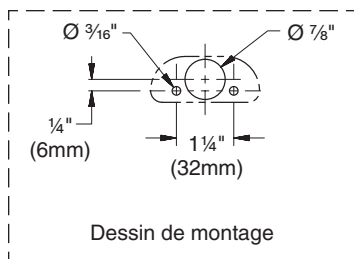


Les codes locaux peuvent exiger l'installation d'une soupape de prévention d'écoulement de retour pour réaliser une installation appropriée. L'installateur est responsable de la conformité aux codes locaux. La soupape doit être testée une fois par an pour vérifier qu'elle fonctionne correctement. Les soupapes de prévention d'écoulement de retour ne sont pas fournies avec l'appareil et peuvent être fournies par l'entrepreneur ou achetées auprès de Bradley Corporation.

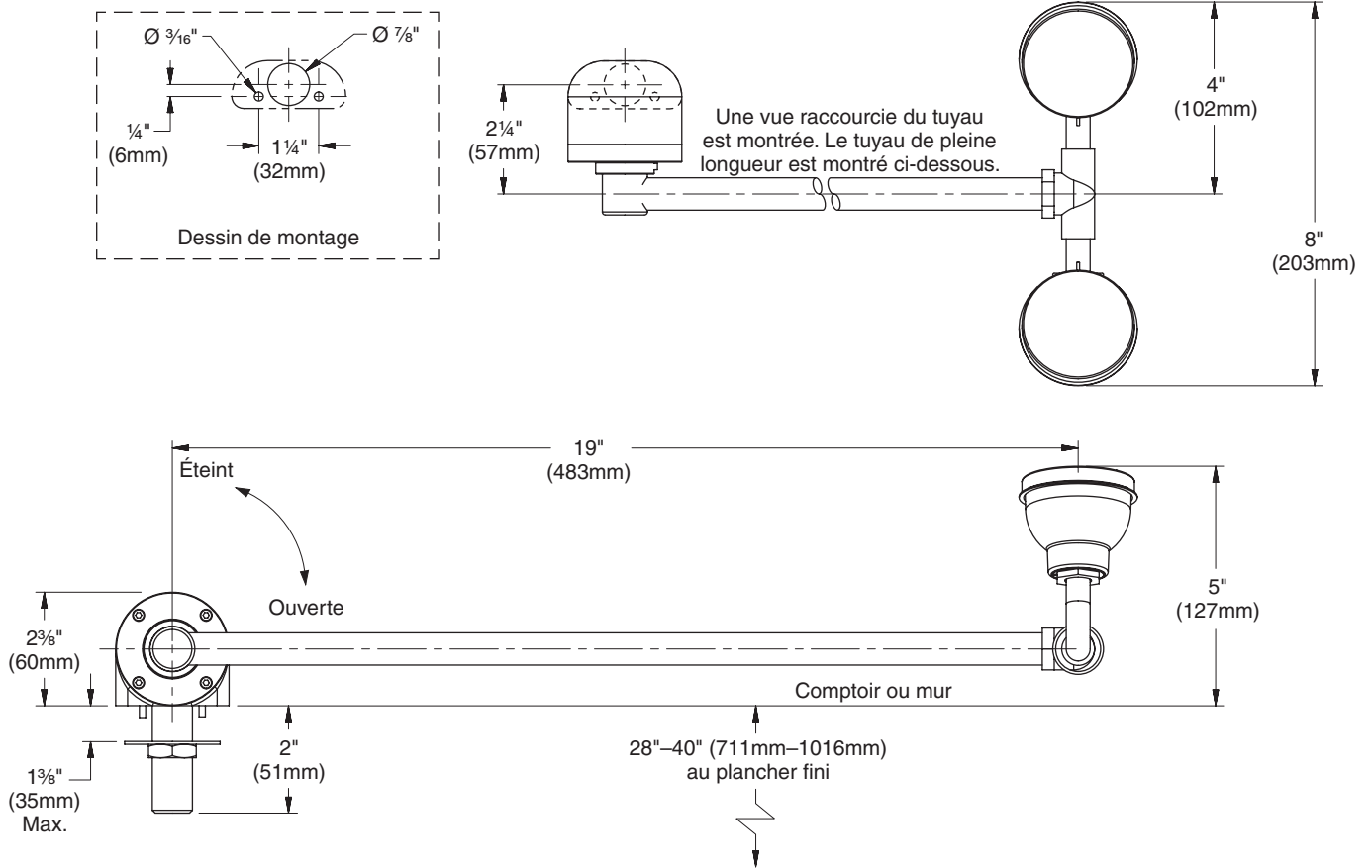
Dimensions — S19-280D, S19-280W (une unité qui est montée au comptoir est montrée)



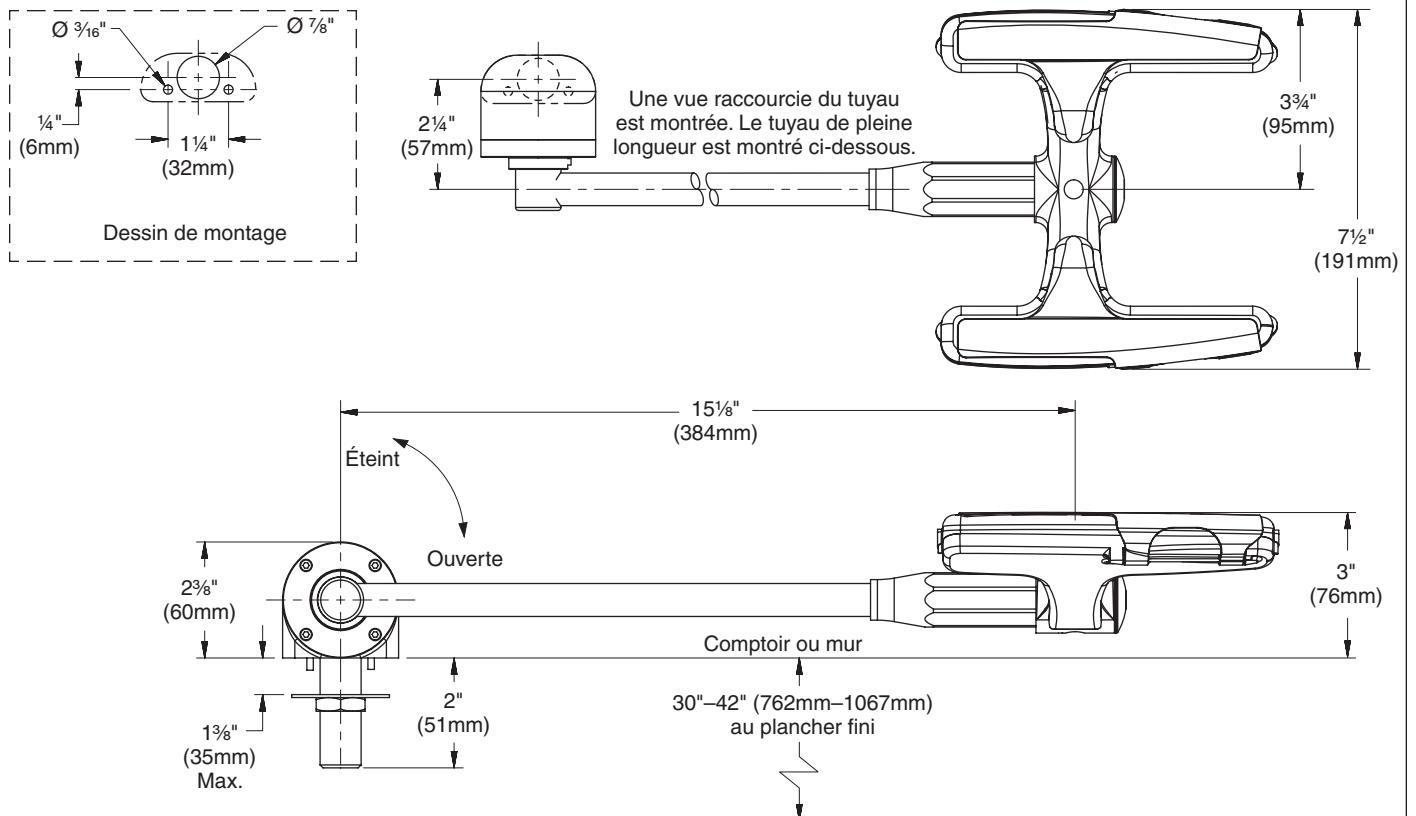
Dimensions — S19274HDB, S19274HWB (une unité qui est montée au comptoir est montrée)



Dimensions — S19-290D, S19-290W (une unité qui est montée au comptoir est montrée)



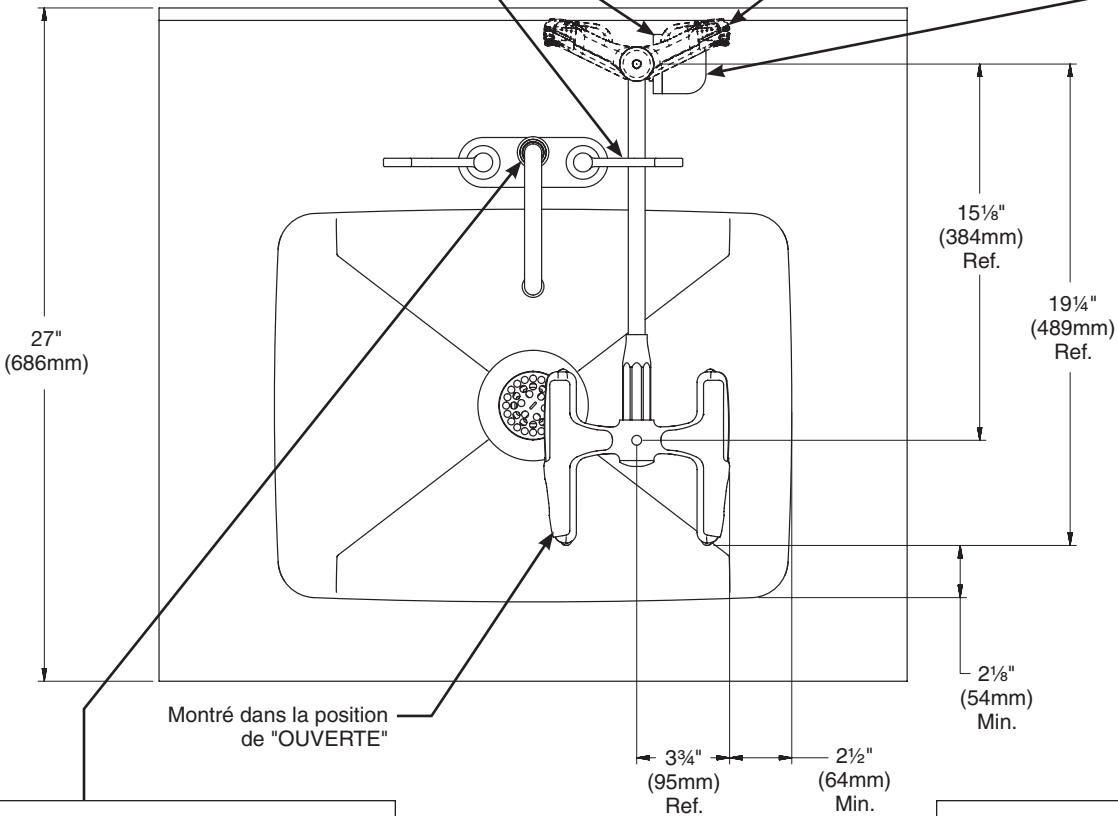
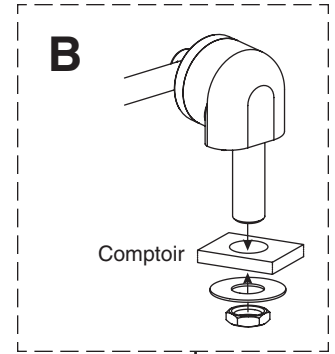
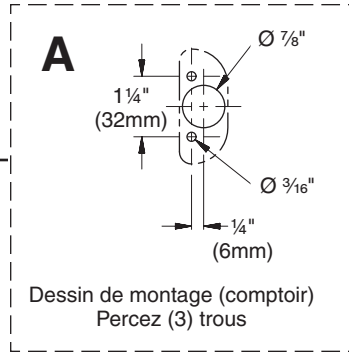
Dimensions — S19274JDB, S19274JWB (une unité qui est montée au comptoir est montrée)



Installation

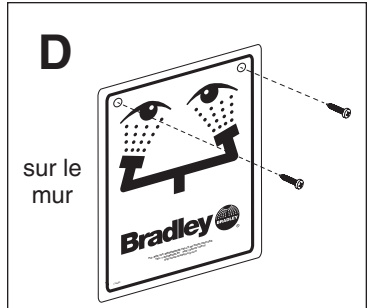
- ✓ La douche oculaire/ faciale Halo est montrée sur un exemple de comptoir de 27" (686 mm). Les autres unités sont similaires.
- ✓ Les dimensions minimales nécessaires pour contenir les éclaboussures des unités Halo sont indiquées.
- ✓ Mettez du produit d'étanchéité (non fourni) sur tous les filetages mâles. Le dessus des érogateurs de la douche oculaire doit être situé à une taille minimum de 83cm (33 po) et à une hauteur maximum de 115 cm (45 po) du plancher et de 15 cm (6 po) de l'obstruction la plus proche.

- ✓ Le dégagement pour les poignées et le tube montant du robinet et les dimensions minimales pour contenir les éclaboussures doivent être pris en compte lors du choix de l'emplacement de pose.



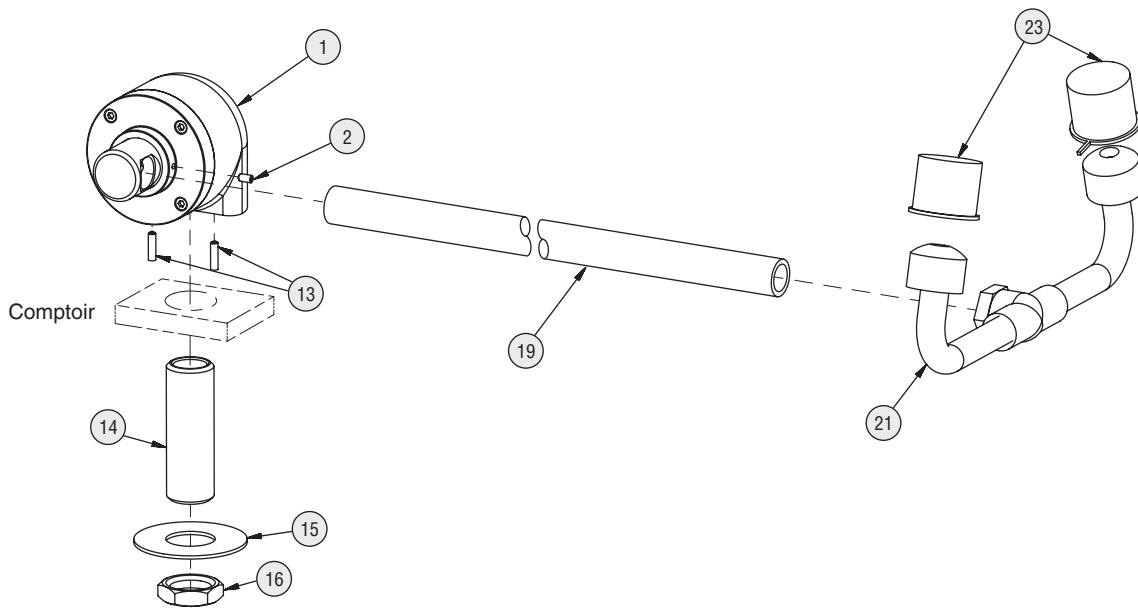
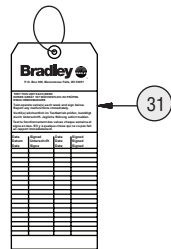
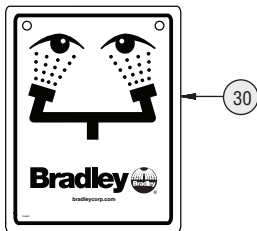
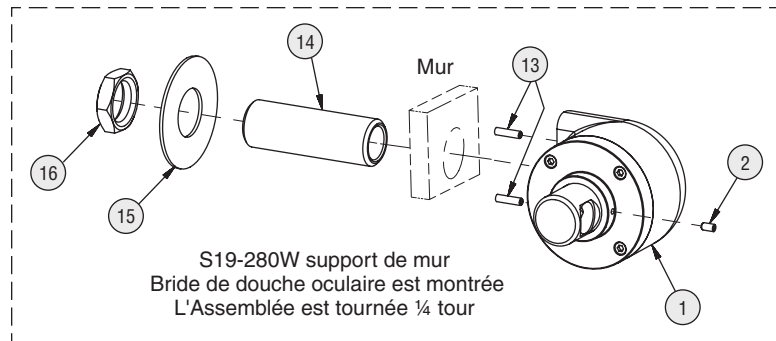
C Un boyau fileté flexible 1/2" NPT (fourni par l'installateur) peut également être utilisé.

E Ouvrir les arrivées d'eau lentement pour libérer l'air et mettre le robinet sous pression. Vérifier s'il y a des fuites et si le débit d'eau est adéquat.



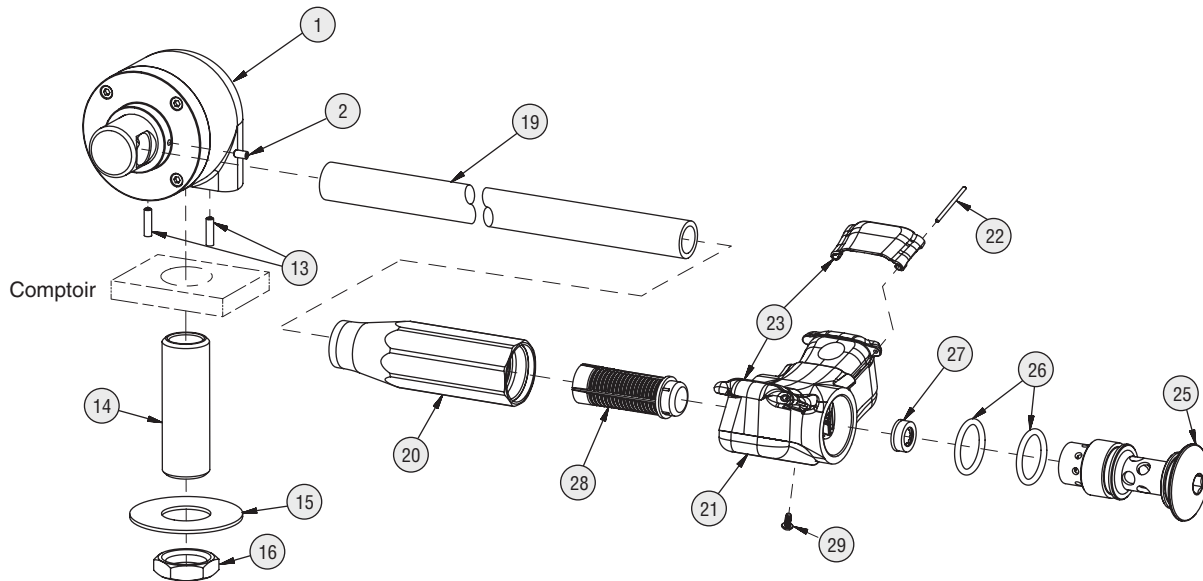
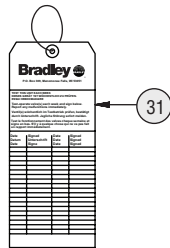
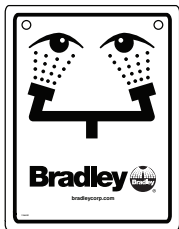
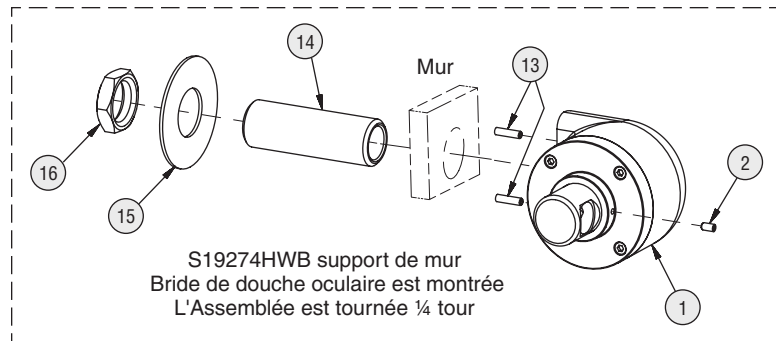
Assemblage des composantes — S19-280D, S19-280W

Montré dans la position de "OUVERTE"

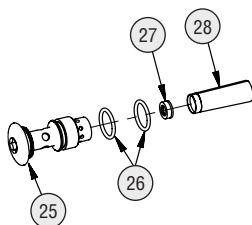


Assemblage des composantes — S19274HDB, S19274HWB

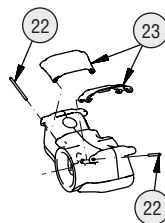
Montré dans la position de "OUVERTE"



Paquet S65-339 comprend les éléments 26, 27, 28
Prepack S88-068 comprend les éléments 25, 26, 27, 28



Paquet couvertures à bascule (douche oculaire)
S45-2675 comprend les éléments 22 et 23



Liste des pièces — S19-280D, S19-280W

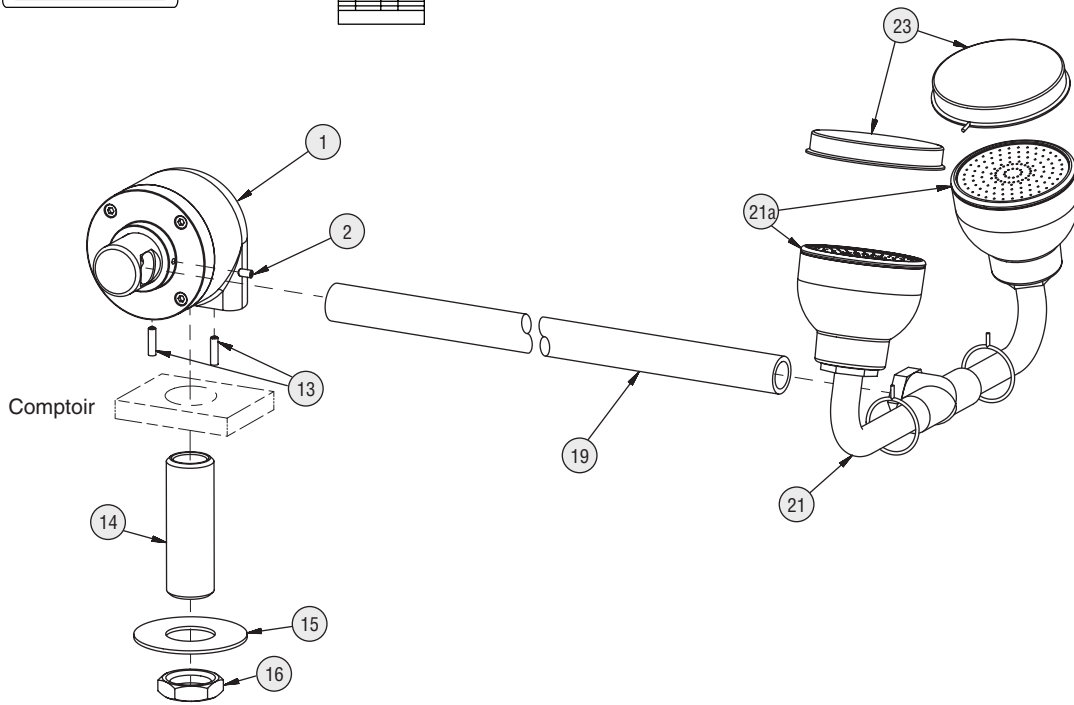
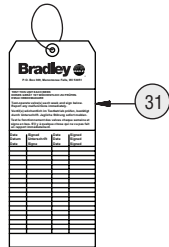
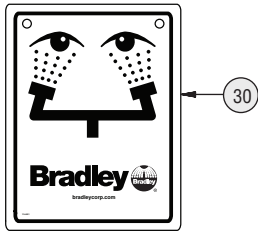
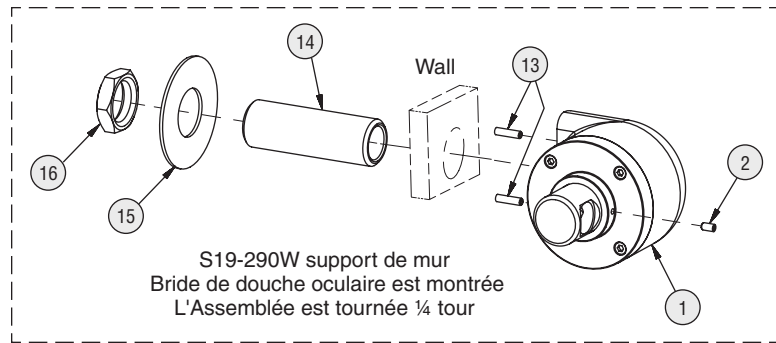
| Pièce | Réf. | Qté | Description | Pièce | Réf. | Qté | Description |
|-------|-----------|-----|---|-------|----------|-----|------------------------------|
| 1 | S65-386CE | 1 | Remplacement de la robinet rabattable, douche oculaire classique, support du comptoir | 16 | 110-115 | 1 | Écrou ½"-14 NPSM |
| 1 | S65-387CE | 1 | Remplacement de la robinet rabattable, douche oculaire classique, support du mur | 19 | 113-1125 | 1 | Tuyau, ¾" x 18½" laiton poli |
| 2 | 160-473 | 1 | Vis de réglage | 21 | S05-092 | 1 | Douche oculaire 90° |
| 13 | 160-474 | 2 | Vis de réglage | 23 | 107-371 | 2 | Cache-poussière ancré |
| 14 | 113-514 | 1 | Tige ½" x 2½" | 30 | 114-051 | 1 | Enseigne de sécurité |
| 15 | 142-002CB | 1 | Rondelle 7/8" x 2" | 31 | 204-421 | 1 | Étiquette d'inspection |

Liste des pièces — S19274HDB, S19274HWB

| Pièce | Réf. | Qté | Description | Pièce | Réf. | Qté | Description |
|-------|-----------|-----|--|-------|-----------------------------|-----|--|
| 1 | S65-386 | 1 | Remplacement de la robinet rabattable, support du comptoir | 22 | dans la trousse d'entretien | 2 | Axe de pivotement (kit de remplacement) |
| | S65-387 | 1 | Remplacement de la robinet rabattable, support du mur | 23 | dans la trousse d'entretien | 2 | Couverture à bascule (kit de remplacement) |
| 2 | 160-473 | 1 | Vis de réglage | 25 | 115-158 | 1 | Bouchon |
| 13 | 160-474 | 2 | Vis de réglage | 26 | 125-157 | 2 | Bague |
| 14 | 113-514 | 1 | Tige ½" x 2½" | 27 | 125-175 | 1 | Contrôle du débit |
| 15 | 142-002CB | 1 | Rondelle 7/8" x 2" | 28 | S65-340 | 1 | Filtrer (paquet de 3) |
| 16 | 110-115 | 1 | Écrou ½"-14 NPSM | 29 | 160-500 | 1 | Vis, purge |
| 19 | 113-1230 | 1 | Tuyau, ¾" x 11¼" laiton chromé rouge | 30 | 114-051 | 1 | Enseigne de sécurité |
| 20 | 171-006 | 1 | Corps ¾" NPT femelle | 31 | 204-421 | 1 | Étiquette d'inspection |
| 21 | S05-190 | 1 | Douche oculaire (comprend) | | | | |

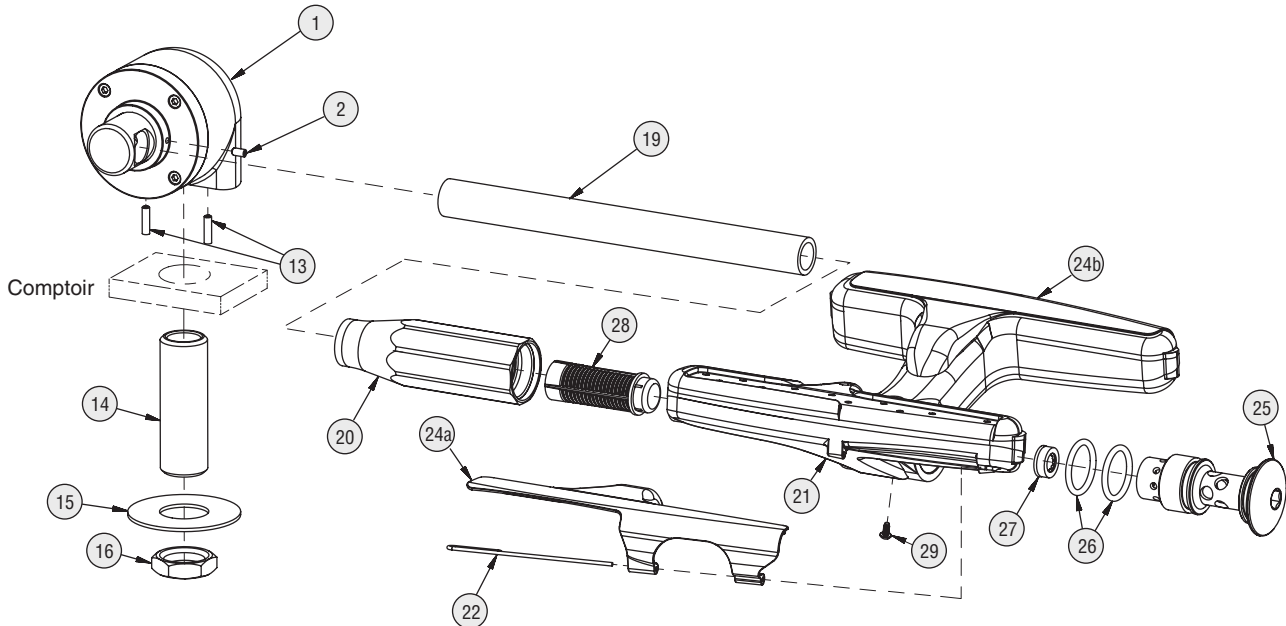
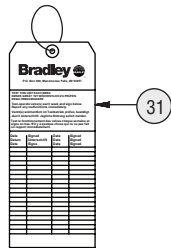
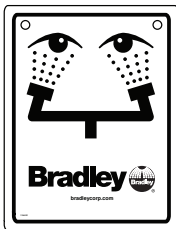
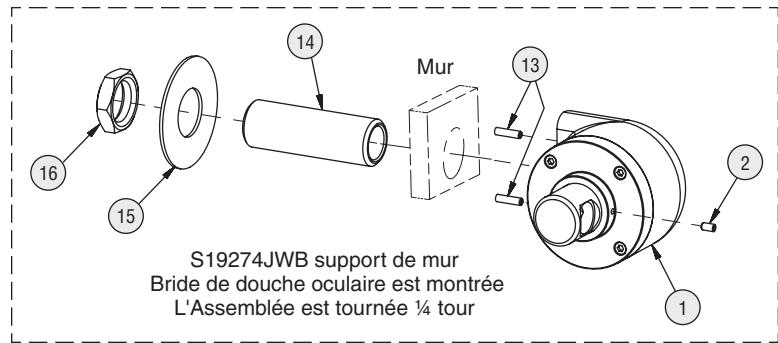
Assemblage des composantes — S19-290D, S19-290W

Montré dans la position de "OUVERTE"

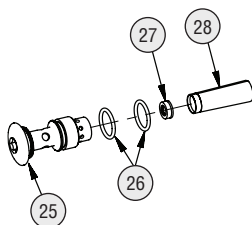


Assemblage des composantes — S19274JDB, S19274JWB

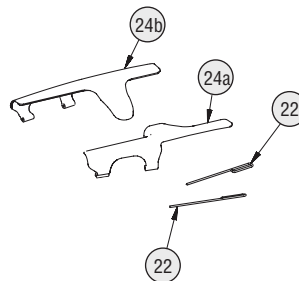
Montré dans la position de "OUVERTE"



Paquet S65-339 comprend les éléments 26, 27, 28
Paquet S88-068 comprend les éléments 25, 26, 27, 28



Paquet couvertures à bascule
(douche oculaire/ faciale)
S45-2676 comprend les
éléments 22, 24a et 24b



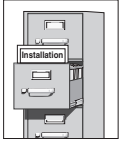
Liste des pièces — S19-290D, S19-290W

| Pièce | Réf. | Qté | Description | Pièce | Réf. | Qté | Description |
|-------|-----------|-----|--|-------|----------|-----|--|
| 1 | S65-386 | 1 | Remplacement de la robinet rabattable, support du comptoir | 16 | 110-115 | 1 | Écrou ½"-14 NPSM |
| 1 | S65-387 | 1 | Remplacement de la robinet rabattable, support du mur | 19 | 113-1125 | 1 | Tuyau, ¾" x 18½" laiton poli |
| 2 | 160-473 | 1 | Vis de réglage | 21 | S05-206 | 1 | Douche oculaire/ faciale |
| 13 | 160-474 | 2 | Vis de réglage | 21A | S45-2453 | 1 | Trousse d'entretien EFW - Diffuseurs noirs |
| 14 | 113-514 | 1 | Tige ½" x 2½" | 23 | S53-063 | 2 | Cache-poussière ancré |
| 15 | 142-002CB | 1 | Rondelle Flat 7/8" x 2" | 30 | 114-051 | 1 | Enseigne de sécurité |
| | | | | 31 | 204-421 | 1 | Étiquette d'inspection |

Liste des pièces — S19274JDB, S19274JWB

| Pièce | Réf. | Qté | Description | Pièce | Réf. | Qté | Description |
|-------|-----------|-----|--|-------|-----------------------------|-----|--|
| 1 | S65-386 | 1 | Remplacement de la robinet rabattable, support du comptoir | 22 | dans la trousse d'entretien | 2 | Axe de pivotement (kit de remplacement) |
| | S65-387 | 1 | Remplacement de la robinet rabattable, support du mur | 24a | dans la trousse d'entretien | 1 | Couverture à bascule (kit de remplacement) |
| 2 | 160-473 | 1 | Vis de réglage | 24b | dans la trousse d'entretien | 1 | Couverture à bascule (kit de remplacement) |
| 13 | 160-474 | 2 | Vis de réglage | 25 | 115-158 | 1 | Bouchon |
| 14 | 113-514 | 1 | Tige ½" x 2½" | 26 | 125-157 | 2 | Bague |
| 15 | 142-002CB | 1 | Rondelle 7/8" x 2" | 27 | 125-175 | 1 | Contrôle du débit |
| 16 | 110-115 | 1 | Écrou ½"-14 NPSM | 28 | S65-340 | 1 | Filter (paquet de 3) |
| 19 | 113-1230 | 1 | Tuyau, ¾" x 11¼" laiton chromé rouge | 29 | 160-500 | 1 | Vis, purge |
| 20 | 171-006 | 1 | Corps ¾" NPT femelle | 30 | 114-051 | 1 | Enseigne de sécurité |
| 21 | S05-192 | 1 | Douche oculaire/ faciale (comprend) | 31 | 204-421 | 1 | Étiquette d'inspection |

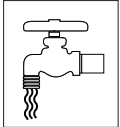
⚠ IMPORTANTE ⚠



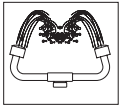
Lea en su totalidad este manual de instalación para garantizar una instalación adecuada. Una vez que termine la instalación, entregue este manual al propietario o al Departamento de Mantenimiento. Es responsabilidad de quien instale el equipo cumplir con los códigos para desagüe y otros códigos y ordenanzas locales.



Separar todas las piezas del material de embalaje y asegurarse que todas las piezas estén incluidas antes de desechar cualquier material de embalaje. Si faltase alguna pieza, no intentar instalar la unidad combinada Bradley hasta obtener las piezas faltantes.



Aclarar el conducto del suministro de agua antes y después de la instalación. Verificar que no haya fugas y que el flujo de agua sea adecuado. El suministro principal de agua a la unidad debe estar siempre en posición "ON" (abierto). Se deben tomar medidas a fin de evitar el corte no autorizado del suministro.



La norma ANSI Z358.1 exige un suministro ininterrumpido de líquido de limpieza. Los equipos de emergencia con tuberías de Bradley requieren una presión de flujo mínima de 0,21 MPa (30 PSI). El líquido de limpieza debe estar tibio en conformidad con la norma ANSI Z358.1.



Este equipo se debe inspeccionar, probar y anotar semanalmente para mantener un funcionamiento adecuado. Se debe revisar este equipo anualmente para asegurarse de que cumpla con la norma ANSI Z358.1.



Los trabajadores que puedan tener contacto con materiales potencialmente peligrosos deben recibir capacitación sobre la ubicación y operación adecuada de los equipos de emergencia en conformidad con la norma ANSI Z358.1.



Para consultas sobre la operación o instalación de este producto, visite www.bradleycorp.com o llame al 800.BRADLEY (800.272.3539).

Las garantías del producto se pueden encontrar en "Productos" o en nuestro sitio Web, www.bradleycorp.com.

¡AVISO! Para unidades clásicas de lavado de ojos/rostro, evite los limpiadores que contengan solventes orgánicos, alcoholes e hidrocarburos. Enjuague con agua después de limpiar.

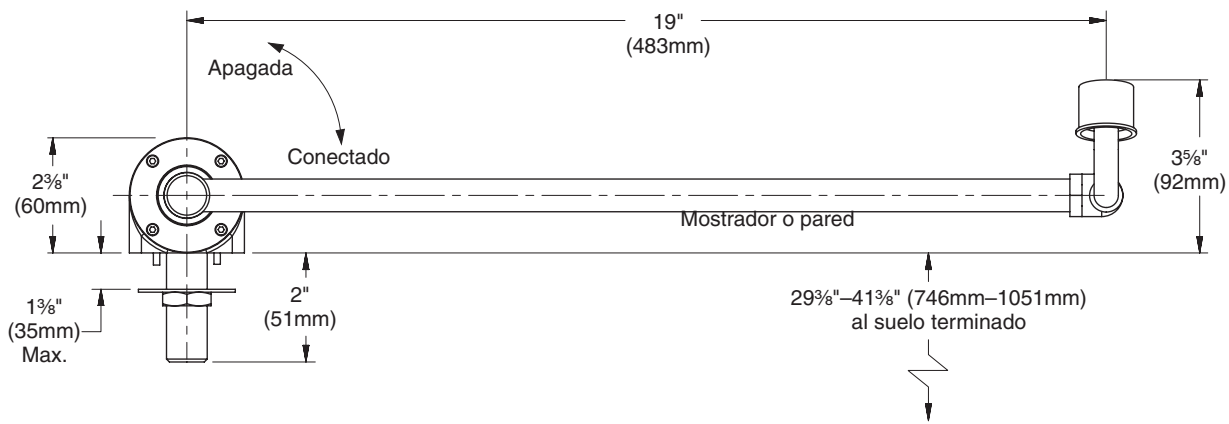
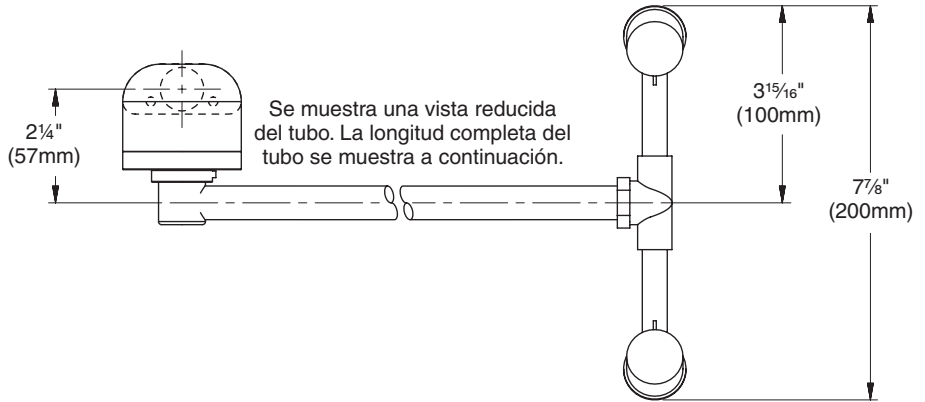
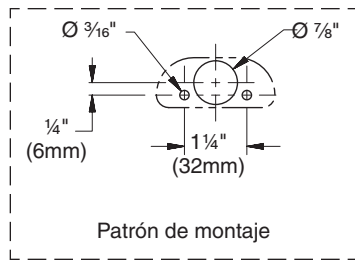
Materiales necesarios:

- Proporcione la tubería a la toma de ½" NPT del suministro de agua del lavador de ojos
- Sellador de tubería
- Tornillería para montar el aviso de seguridad

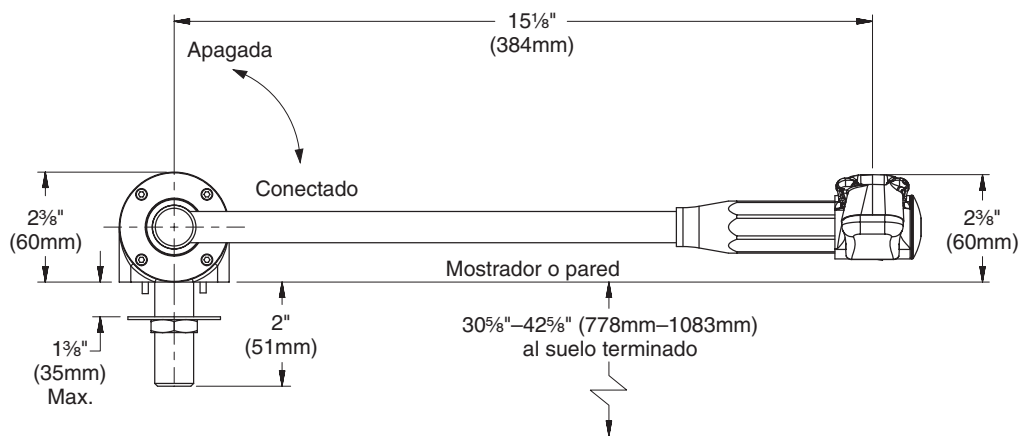
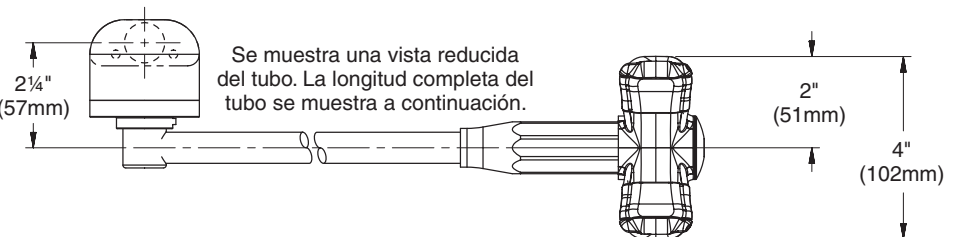
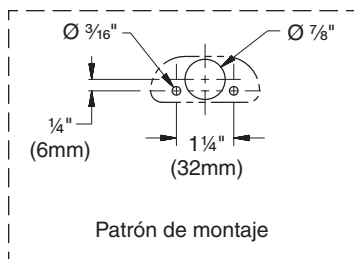


Los códigos locales pueden exigir la instalación de una válvula de prevención de contraflujo para completar la instalación correcta. La conformidad con los códigos locales es de responsabilidad del instalador. La válvula se debe probar anualmente para verificar que funcione de manera correcta. Las válvulas de prevención de contraflujo no se incluyen con el accesorio y las puede proporcionar el contratista o las puede comprar en Bradley Corporation.

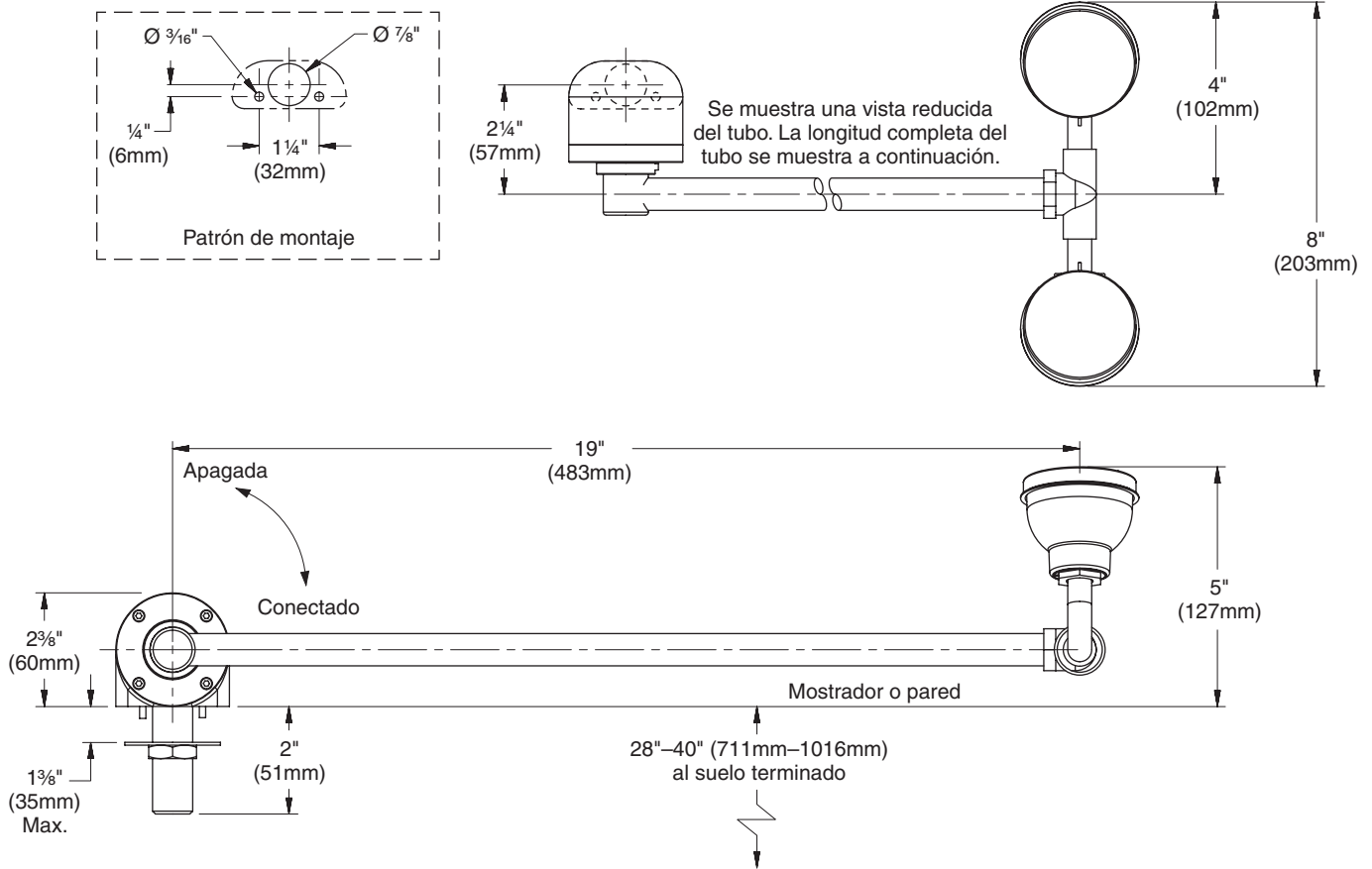
Dimensiones — S19-280D, S19-280W (se muestra una unidad que se monta a la mostrador)



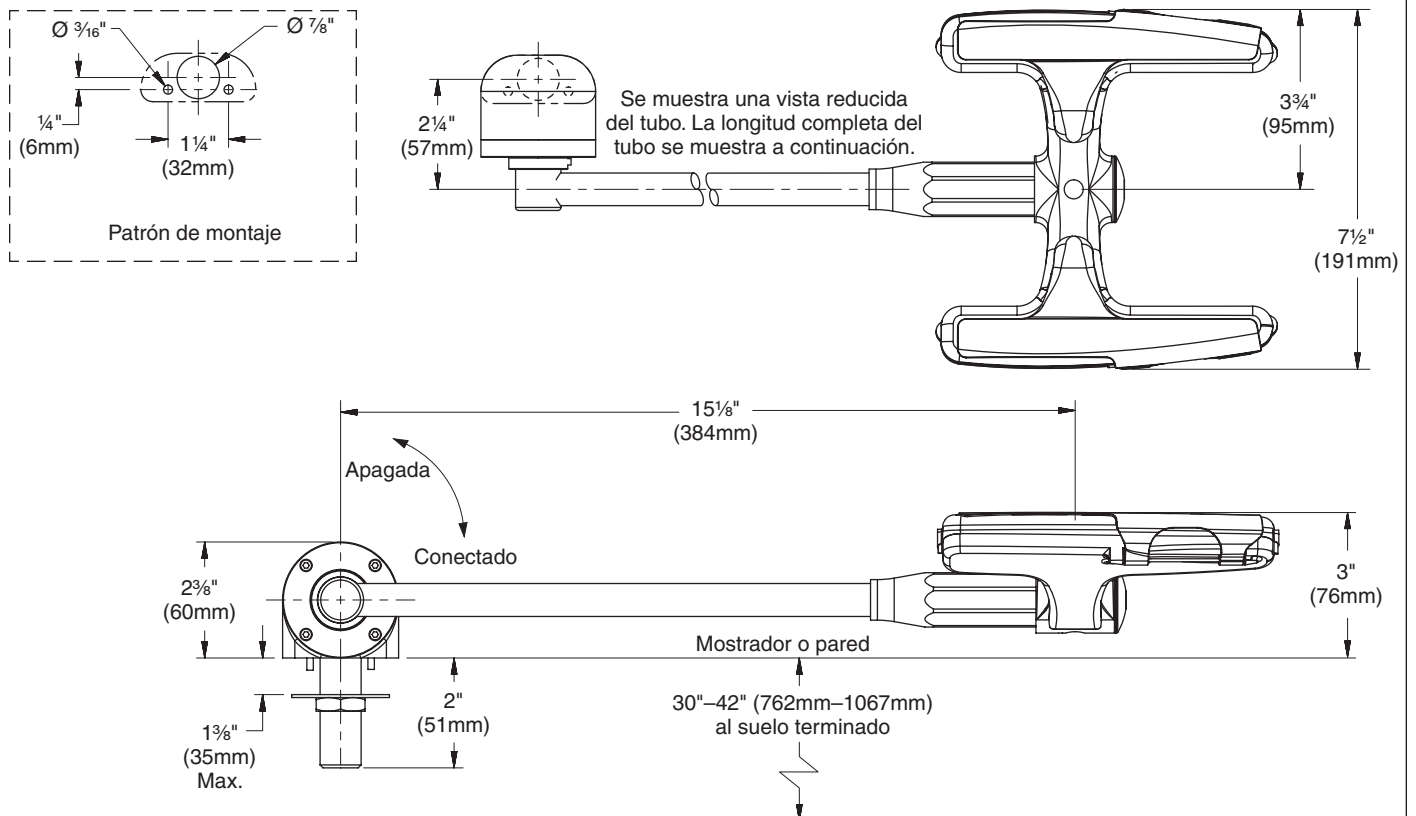
Dimensiones — S19274HDB, S19274HWB (se muestra una unidad que se monta a la mostrador)



Dimensiones — S19-290D, S19-290W (se muestra una unidad que se monta a la mostrador)



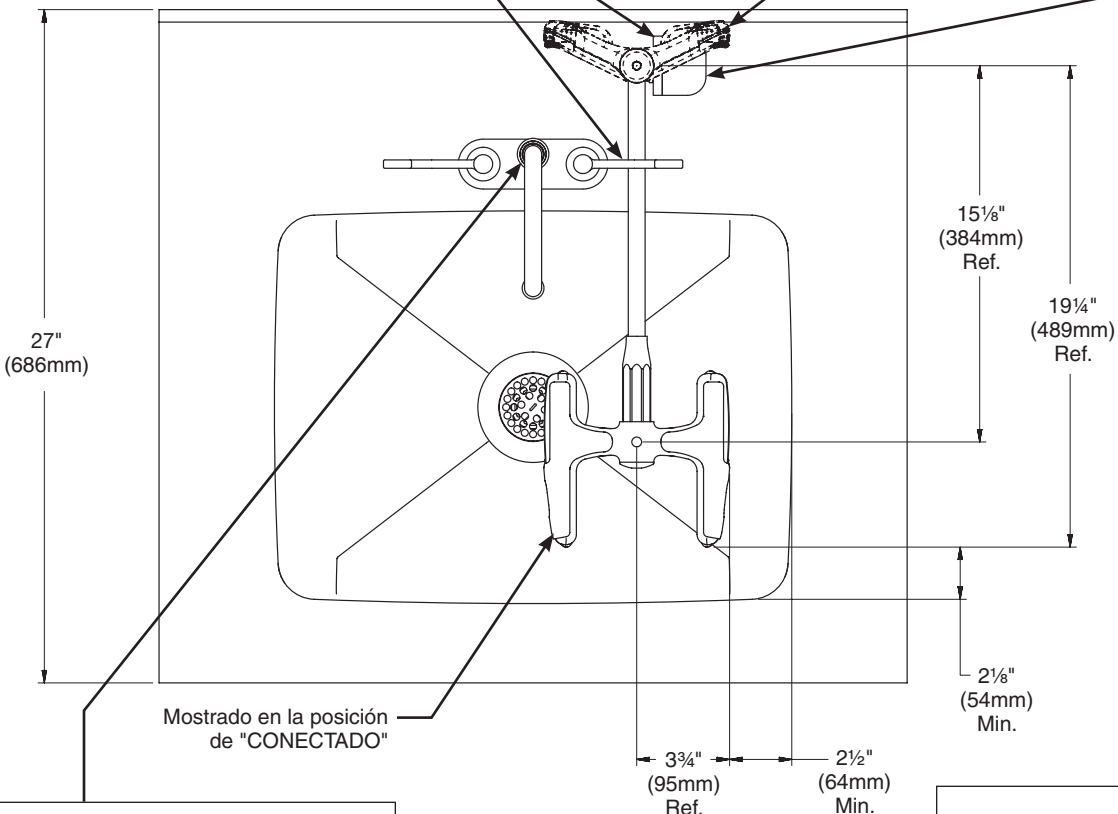
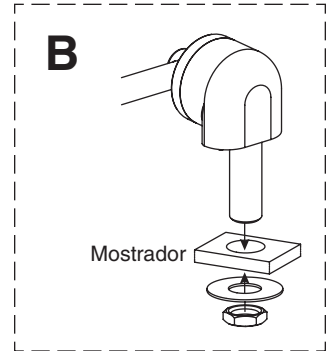
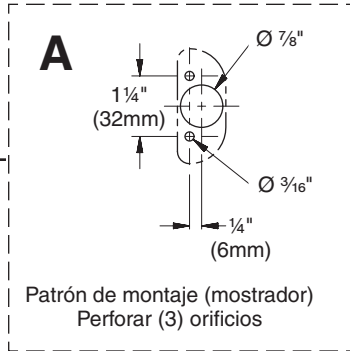
Dimensiones — S19274JDB, S19274JWB (se muestra una unidad que se monta a la mostrador)



Instalación

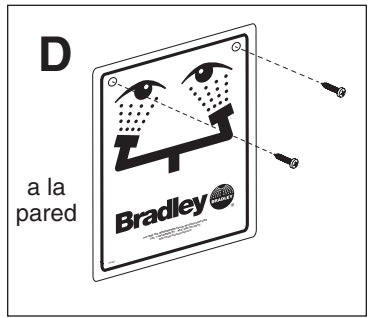
- ✓ Se observa la unidad de lavado ocular y facial Halo en una cubierta de muestra de 27" (686 mm). Las otras unidades son similares.
- ✓ Se muestran las dimensiones mínimas necesarias para contener las salpicaduras de las unidades Halo.
- ✓ Aplicar sellador de tubería o cinta (suministrados por el instalador) a las juntas de tubería de rosca macho. La parte superior de los rociadores del lavador de ojos debe colocarse a una altura máxima de 33 pulgadas (83 cm) y a una altura mínimo de 45 pulg. (115 cm) del piso y 6 pulg. (15 cm) de la obstrucción más cercana.

- ✓ Se debe considerar el espacio adecuado entre la caña y la manilla de la llave y las dimensiones mínimas para la contención de salpicaduras cuando se seleccione la ubicación deseada para el montaje.



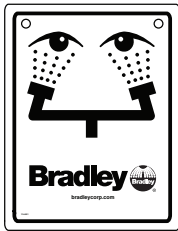
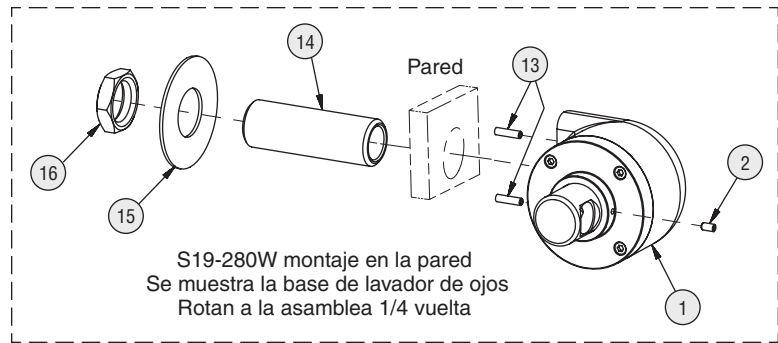
C Se puede usar también una manguera flexible (provista por el instalador) con terminación de rosca de 1/2" (12,8 mm) NPT.

E Abra lentamente las tuberías de suministro de agua para liberar el aire y presurizar la válvula. Revise si existen fugas y verifique si el flujo de agua es adecuado.



Armado de los componentes — S19-280D, S19-280W

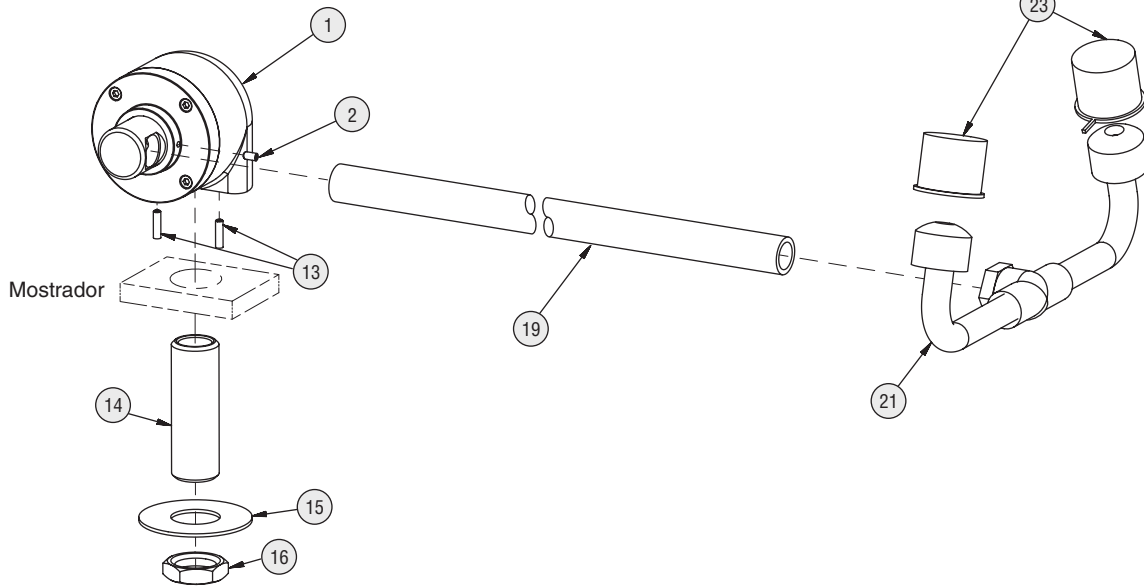
Mostrado en la posición de "CONECTADO"



30

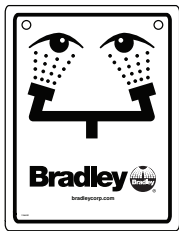
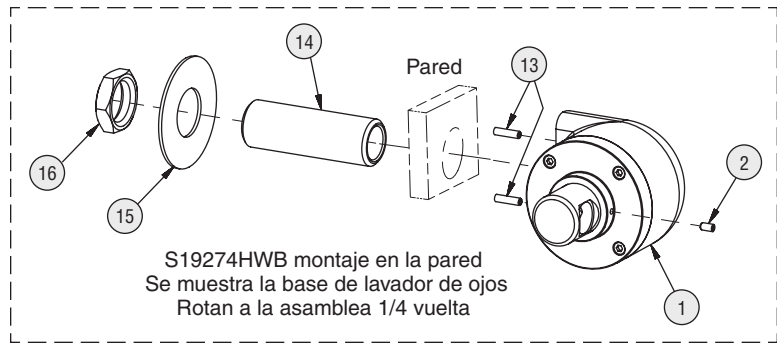


31

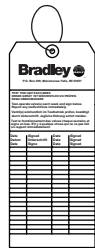


Armado de los componentes — S19274HDB, S19274HWB

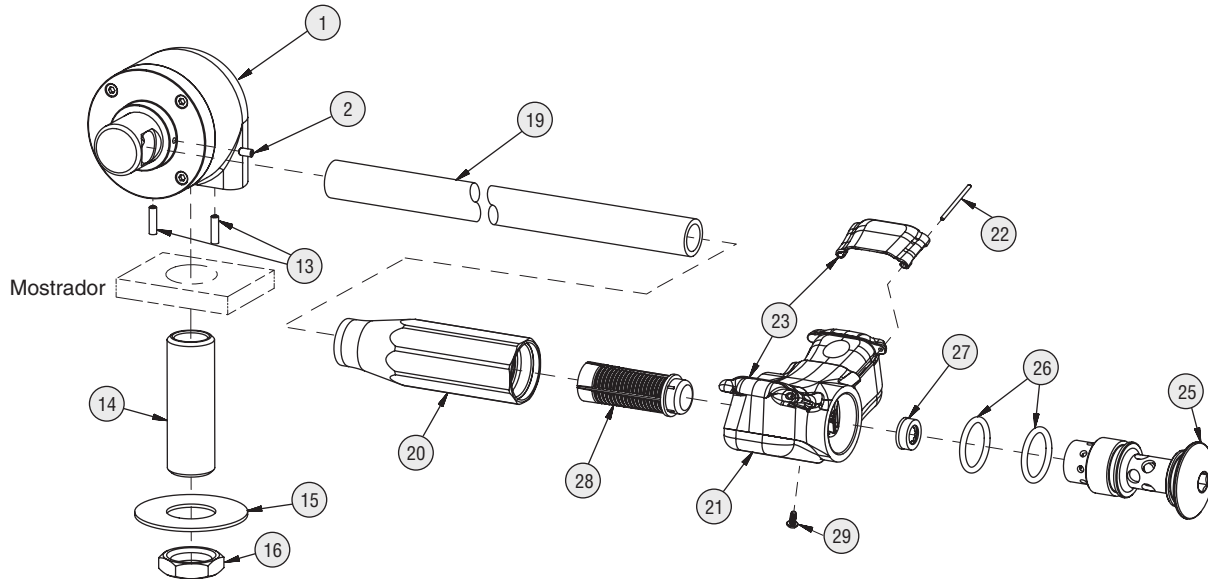
Mostrado en la posición de "CONECTADO"



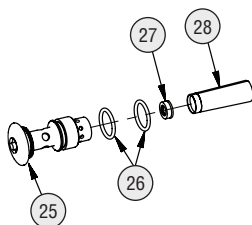
30



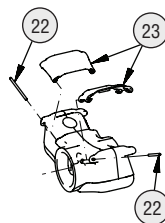
31



Paquete S65-339 incluye art. 26, 27, 28
Paquete S88-068 incluye art. 25, 26, 27, 28



Paquete tapa protectora
lavajos S45-2675 incluye
art. 22 and 23



Lista de piezas — S19-280D, S19-280W

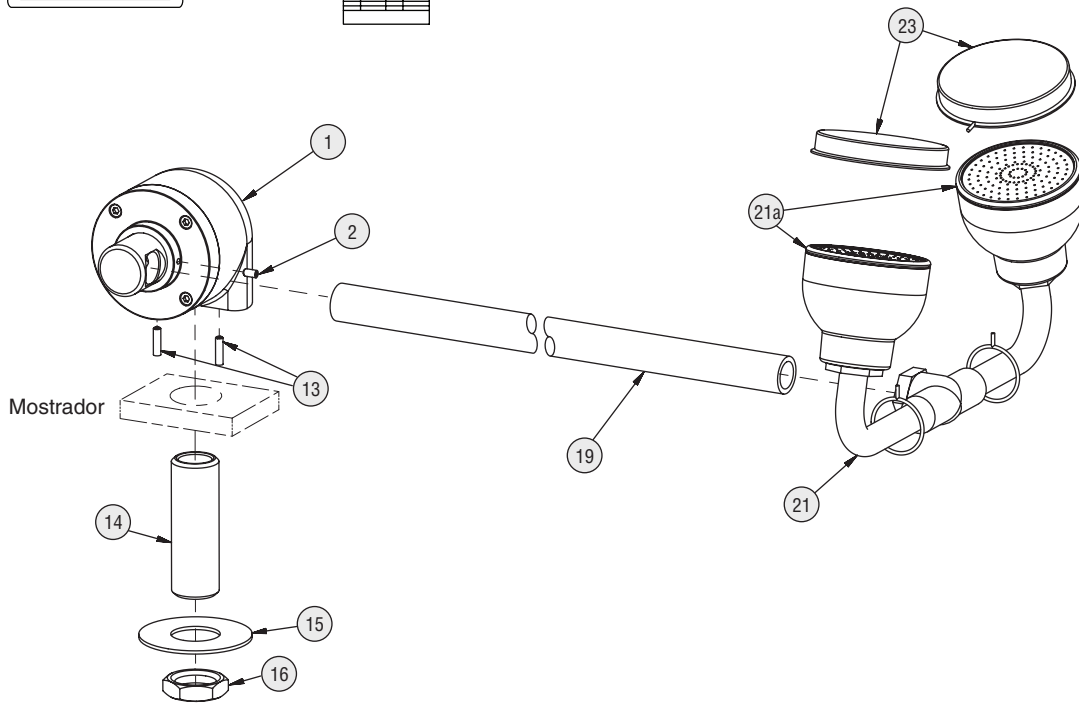
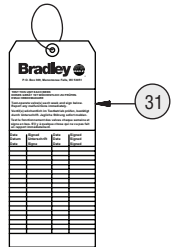
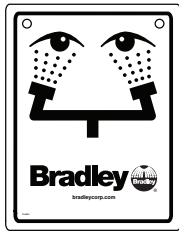
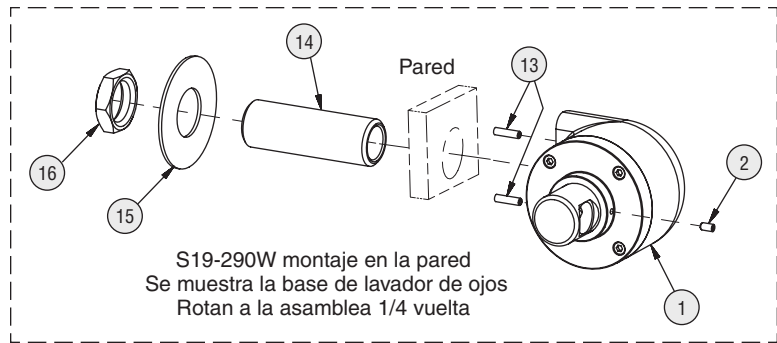
| Art. | Pieza N° | Ctd. | Descripción | Art. | Pieza N° | Ctd. | Descripción |
|------|-----------|------|---|------|----------|------|-----------------------------|
| 1 | S65-386CE | 1 | Reemplazo de conjunto de válvula, lavador de ojos clásico, montaje de mostrador | 16 | 110-115 | 1 | Tuerca ½"-14 NPSM |
| 1 | S65-387CE | 1 | Reemplazo de conjunto de válvula, lavador de ojos clásico, montaje de la pared | 19 | 113-1125 | 1 | Tubo ¾" x 18½" latón pulido |
| 2 | 160-473 | 1 | Tornillo prisionero | 21 | S05-092 | 1 | Lavador de ojos 90° |
| 13 | 160-474 | 2 | Tornillo prisionero | 23 | 107-371 | 2 | Cubierta contrapolvo |
| 14 | 113-514 | 1 | Varilla tornillante ½" x 2½" | 30 | 114-051 | 1 | Aviso de seguridad |
| 15 | 142-002CB | 1 | Arandela 7/8" x 2" | 31 | 204-421 | 1 | Etiqueta de inspección |

Lista de piezas — S19274HDB, S19274HWB

| Art. | Pieza N° | Ctd. | Descripción | Art. | Pieza N° | Ctd. | Descripción |
|------|-----------|------|--|------|----------------------------|------|---------------------------------------|
| 1 | S65-386 | 1 | Reemplazo de conjunto de válvula, montaje de mostrador | 22 | En el kit de mantenimiento | 2 | Pasador de pivote (juego de repuesto) |
| | S65-387 | 1 | Reemplazo de conjunto de válvula, montaje de la pared | 23 | En el kit de mantenimiento | 2 | Tapa protectora (juego de repuesto) |
| 2 | 160-473 | 1 | Tornillo prisionero | 25 | 115-158 | 1 | Tapa |
| 13 | 160-474 | 2 | Tornillo prisionero | 26 | 125-157 | 2 | Arosello |
| 14 | 113-514 | 1 | Varilla tornillante ½" x 2½" | 27 | 125-175 | 1 | Control del flujo |
| 15 | 142-002CB | 1 | Arandela 7/8" x 2" | 28 | S65-340 | 1 | Filtro (paquete de 3) |
| 16 | 110-115 | 1 | Tuerca ½"-14 NPSM | 29 | 160-500 | 1 | Tornillo, Drenaje |
| 19 | 113-1230 | 1 | Tubo ¾" x 11¼" cromado latón rojo | 30 | 114-051 | 1 | Aviso de seguridad |
| 20 | 171-006 | 1 | Cuerpo ¾" NPT hembra | 31 | 204-421 | 1 | Etiqueta de inspección |
| 21 | S05-190 | 1 | Lavador de ojos (incluye) | | | | |

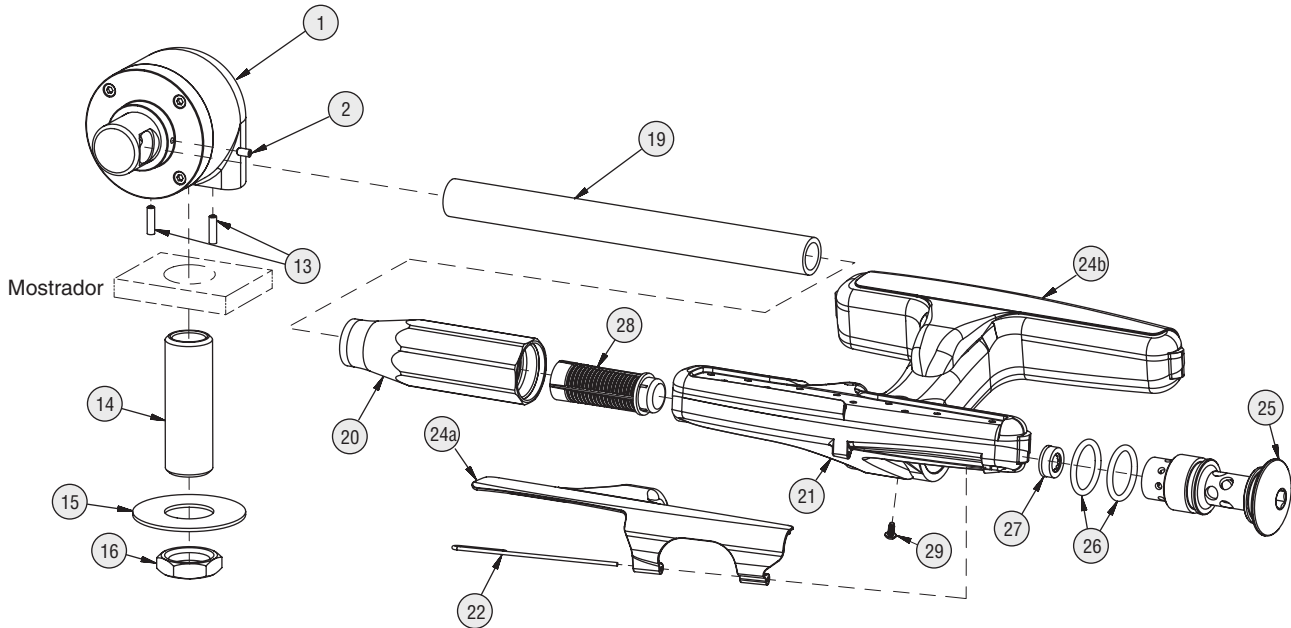
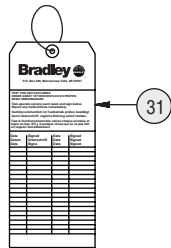
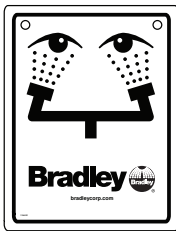
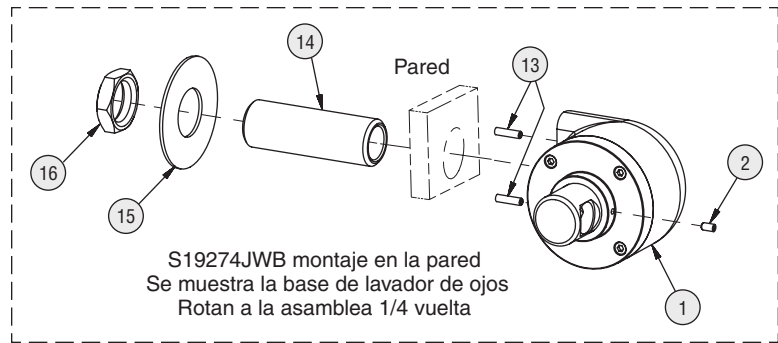
Armado de los componentes — S19-290D, S19-290W

Mostrado en la posición de "CONECTADO"

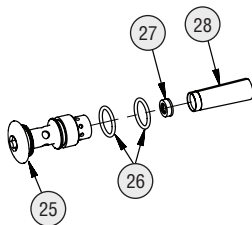


Armado de los componentes — S19274JDB, S19274JWB

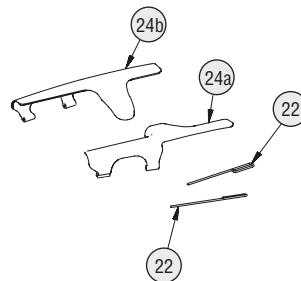
Mostrado en la posición de "CONECTADO"



Paquete S65-339 incluye art. 26, 27, 28
Paquete S88-068 incluye art. 25, 26, 27, 28



Paquete tapa protectora
lavajos/rostro S45-2676
incluye art. 22, 24a y 24b



Lista de piezas — S19-290D, S19-290W

| Art. | Pieza N° | Ctd. | Descripción | Art. | Pieza N° | Ctd. | Descripción |
|------|-----------|------|--|------|----------|------|--|
| 1 | S65-386 | 1 | Reemplazo de conjunto de válvula, montaje de mostrador | 19 | 113-1125 | 1 | Tubo 3/8" x 18 1/2" latón pulido |
| 1 | S65-387 | 1 | Reemplazo de conjunto de válvula, montaje de la pared | 21 | S05-206 | 1 | Lavado de ojos y rostro |
| 2 | 160-473 | 1 | Tornillo prisionero | 21A | S45-2453 | 1 | Kit de mantenimiento para lavado de ojos y rostro: Boquillas rociadoras negras |
| 13 | 160-474 | 2 | Tornillo prisionero | 23 | S53-063 | 2 | Cubierta contrapolvo con ligaduras |
| 14 | 113-514 | 1 | Varilla tornillante 1/2" x 2 1/2" | 30 | 114-051 | 1 | Aviso de seguridad |
| 15 | 142-002CB | 1 | Arandela 7/8" x 2" | 31 | 204-421 | 1 | Etiqueta de inspección |
| 16 | 110-115 | 1 | Tuerca 1/2"-14 NPSM | | | | |

Lista de piezas — S19274JDB, S19274JWB

| Art. | Pieza N° | Ctd. | Descripción | Art. | Pieza N° | Ctd. | Descripción |
|------|-----------|------|--|------|----------------------------|------|---------------------------------------|
| 1 | S65-386 | 1 | Reemplazo de conjunto de válvula, montaje de mostrador | 22 | En el kit de mantenimiento | 2 | Pasador de pivote (juego de repuesto) |
| | S65-387 | 1 | Reemplazo de conjunto de válvula, montaje de la pared | 24a | En el kit de mantenimiento | 1 | Tapa protectora (juego de repuesto) |
| 2 | 160-473 | 1 | Tornillo prisionero | 24b | En el kit de mantenimiento | 1 | Tapa protectora (juego de repuesto) |
| 13 | 160-474 | 2 | Tornillo prisionero | 25 | 115-158 | 1 | Tapa |
| 14 | 113-514 | 1 | Varilla tornillante 1/2" x 2 1/2" | 26 | 125-157 | 2 | Arosello |
| 15 | 142-002CB | 1 | Arandela 7/8" x 2" | 27 | 125-175 | 1 | Control del flujo |
| 16 | 110-115 | 1 | Tuerca 1/2"-14 NPSM | 28 | S65-340 | 1 | Filtro (paquete de 3) |
| 19 | 113-1230 | 1 | Tubo 3/8" x 11 1/4" cromado latón rojo | 29 | 160-500 | 1 | Tornillo, Drenaje |
| 20 | 171-006 | 1 | Cuerpo 3/8" NPT hembra | 30 | 114-051 | 1 | Aviso de seguridad |
| 21 | S05-192 | 1 | Lavado de ojos y rostro (incluye) | 31 | 204-421 | 1 | Etiqueta de inspección |