

# INSTALLATION AND MAINTENANCE INSTRUCTIONS

## Bobrick Models B-823, B-8231, B-8236, B-82316 Manual Foam Soap Dispensers

### HOW TO MOUNT DISPENSER

1. Place Shank and Latch Assembly through 1" diameter hole in counter top. *Make sure the rubber gasket is between the shank and the counter top.*
2. Below the counter, push the O-Ring and Rosette Washer up and around the shank and secure them by threading the Mounting Nut.
3. Thread the Bottle Cap Assembly to the end of the Shank below the counter.
4. Thread the Bottle to the Bottle Cap Assembly.
5. Push the funnel through the top of the shank above the counter until it snaps into place.
6. Install the Foam Dispensing Assembly by aligning the round hole of the escutcheon with the middle of the red latch. Push down gently and rotate clockwise until the assembly locks into place.

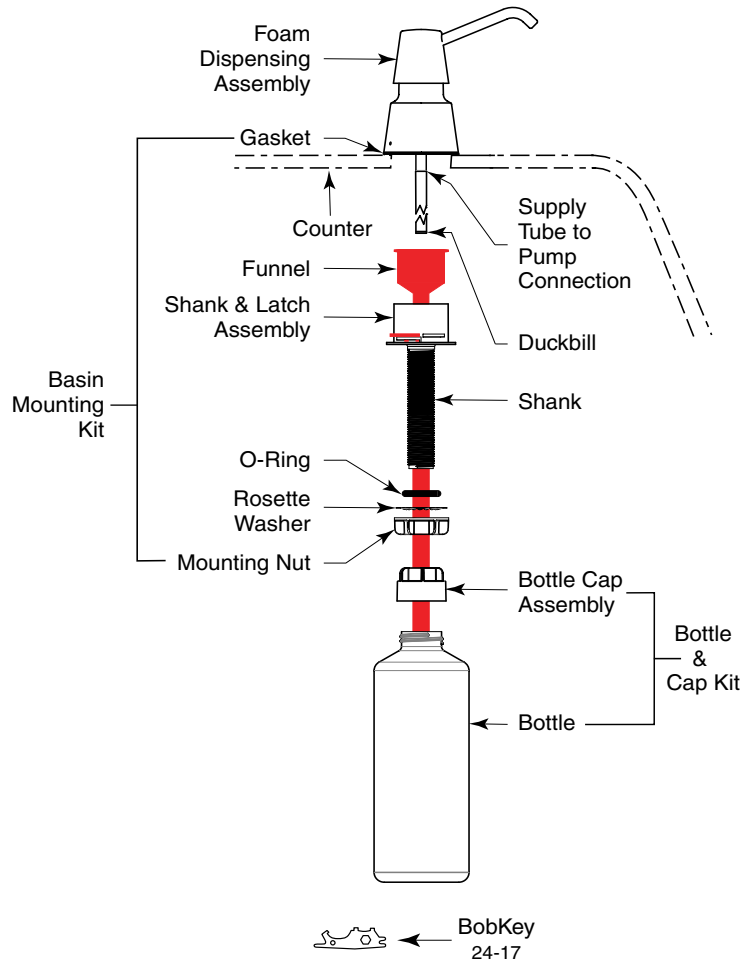
### HOW TO FILL DISPENSER

1. Insert BobKey into the round hole of the escutcheon and rotate the escutcheon counterclockwise to disengage the Foam Dispensing Assembly.
2. Fill the dispenser with **FOAM SOAP ONLY** by pouring through the funnel.
3. Unit is filled when the funnel floats up.
4. Dispenser may also be filled by removing the bottle from beneath countertop.
5. If a shorter shank is desired, remove soap pump assembly, then cut shank at break in threads. The same length removed from the shank should be removed from the bottom of the funnel and top of supply tube connected to the foam dispensing assembly.

**Note:** When first using a new dispenser, the dispenser will initially need to be pumped several times for the soap to go through the entire dispenser. In some installations, this may take up to 50 pumps.

### HOW TO MAINTAIN DISPENSER

For proper maintenance, the soap pump assembly should be flushed every six months by filling the bottle with warm water and pumping the unit several times. Remove excess water and refill with soap.



### REPLACEMENT PARTS LIST

24-17	BobKey
823-32	Foam Dispensing Assembly Kit 4" spout for 1-L Bottle
823-33	Duckbill Kit
823-34	Basin Mounting Kit 1-L Bottle
8231-32	Foam Dispensing Assembly Kit 4" spout for 0.6-L Bottle
8231-34	Basin Mounting Kit 0.6-L Bottle
8236-32	Foam Dispensing Assembly Kit 6" spout for 1-L Bottle
823-35	Bottle & Cap Kit 1-L (34 oz.) Bottle
82316-32	Foam Dispensing Assembly Kit 6" spout for 0.6-L Bottle
8231-35	Bottle & Cap Kit 0.6-L (20 oz.) Bottle



**BUILDING VALUE SINCE 1906**

© 2017 by Bobrick Washroom Equipment, Inc.  
Form No. 823-69 r2/28/17 Printed in U.S.A.

**In the U.S.A.: BOBRICK WASHROOM EQUIPMENT, INC.**

200 Commerce Drive, Clifton Park, New York 12065-1350 • Tel: (518) 877-7444 • FAX: (518) 877-5029  
6901 Tujunga Ave, North Hollywood, California 91605-6213 • Tel: (818) 982-9600 • FAX: (818) 503-1102

**In Canada: BOBRICK WASHROOM EQUIPMENT COMPANY**

45 Rolark Drive, Scarborough, Ontario M1R 3B1 • Ontario East: Tel: (877) 423-6555 • FAX: (877) 423-8555  
• Manitoba West: Tel: (877) 423-6444 • FAX: (877) 423-8444