



AMERICAN SPECIALTIES, INC.

441 Saw Mill River Road, Yonkers, NY 10701

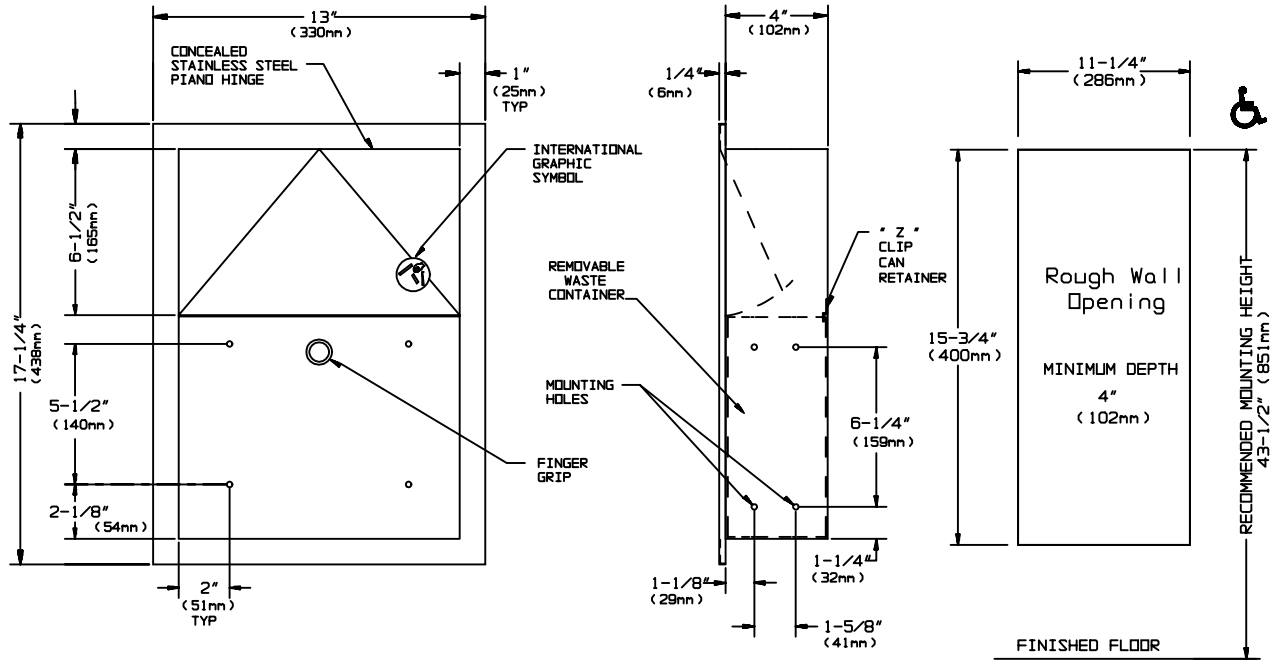
MODEL No: 0473

ISSUED: 1-87

REVISED: 9-04

RECESSED SANITARY NAPKIN DISPOSAL

Distributed by
www.Ameraproducts.com
 Phone: (800) 608-6568
 Fax: (409) 840-5545
info@ameraproducts.com



SPECIFICATION

Recessed Sanitary Napkin Disposal shall hold 1.5gal (5.7 liters) of dry solids. Upper door, waste container and cabinet frame shall be fabricated of alloy 18-8 stainless steel, type 304, 22 gauge. Structural assembly of body and door components shall be of welded construction. Upper door shall be hung on cabinet with a stainless steel spring hinge and have the international waste symbol on face. All exposed surfaces shall have a N° 4 satin finish and be protected during shipment with a PVC film that shall be easily removable after installation. Face trim shall be of one piece construction 1" (25.4mm) wide with no welded miters and shall have square 1/4" (6.35mm) return to wall..

Recessed Sanitary Napkin Disposal shall be Model N° 0473 as manufactured by American Specialties, Inc., 441 Saw Mill River Road, Yonkers, New York 10701-4913

INSTALLATION

Unit is mounted in wall recess using N° 10 self tapping screws (by others) through concealed mounting holes provided. Note that top of rough wall opening is 3/4" (19mm) below top of unit.

Rough Wall Opening required is.....11-1/4" W x 15-3/4" H x 4" D. minimum (286mm x 400mm x 102mm)

OPERATION

Users push door to deposit waste material. Door is self-closing. Unit is emptied by removing can and removing disposable waxed waste paper bag which is furnished by others. Waste container is held in place by a "Z" clip retainer to prevent inadvertent dumping of contents. Safety-edged finger grip provides convenient grip for service.