



T&S BRASS AND BRONZE WORKS, INC.

2 Saddleback Cove / P.O. Box 1088
Travelers Rest, SC 29690

Model No.

P3-8WESV-08M

Item No.

Travelers Rest, SC: 800-476-4103 • Simi Valley, CA: 800-423-0150 • Fax: 864-834-3518 • www.tsbrass.com



Hanger Hook
w/ Mounting Screws
(Included)

This Space for Architect/Engineer Approval

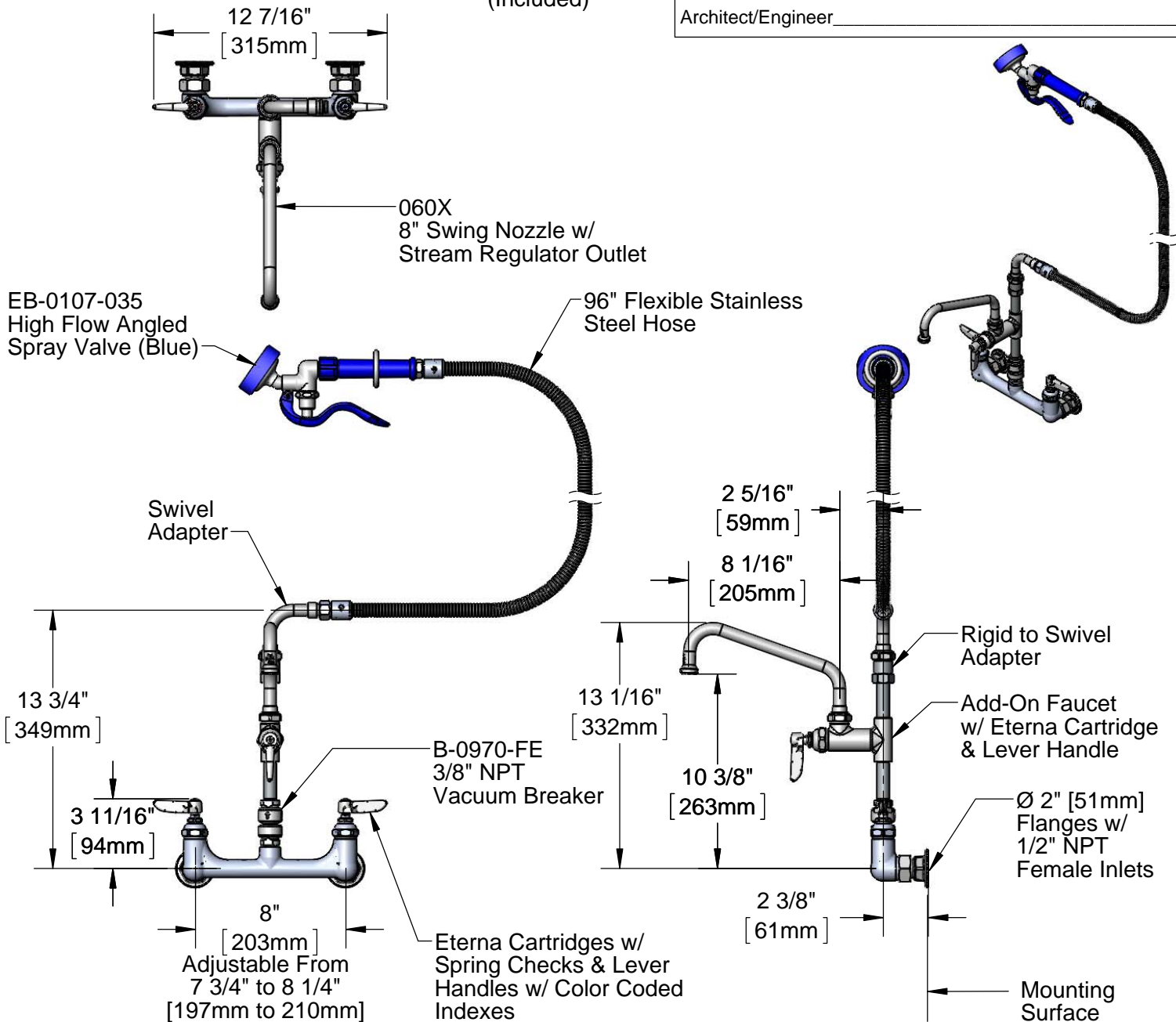
Job Name _____ Date _____

Model Specified _____ Quantity _____

Customer/Wholesaler _____

Contractor _____

Architect/Engineer _____



Product Specifications:

8" Wall Mount Mixing Faucet, Eterna Cartridges w/ Spring Checks, Lever Handles, Add-On Faucet, 8" Swing Nozzle, Vacuum Breaker, High Flow Angled Spray Valve (Blue), 96" Flexible Stainless Steel Hose & 1/2" NPT Female Inlets

Product Compliance:

EPA Act 2005 Non-Compliant (PRSV)
CSA B64.8 (VB)
NSF 61 Exempt (Non-Potable)



T&S BRASS AND BRONZE WORKS, INC.

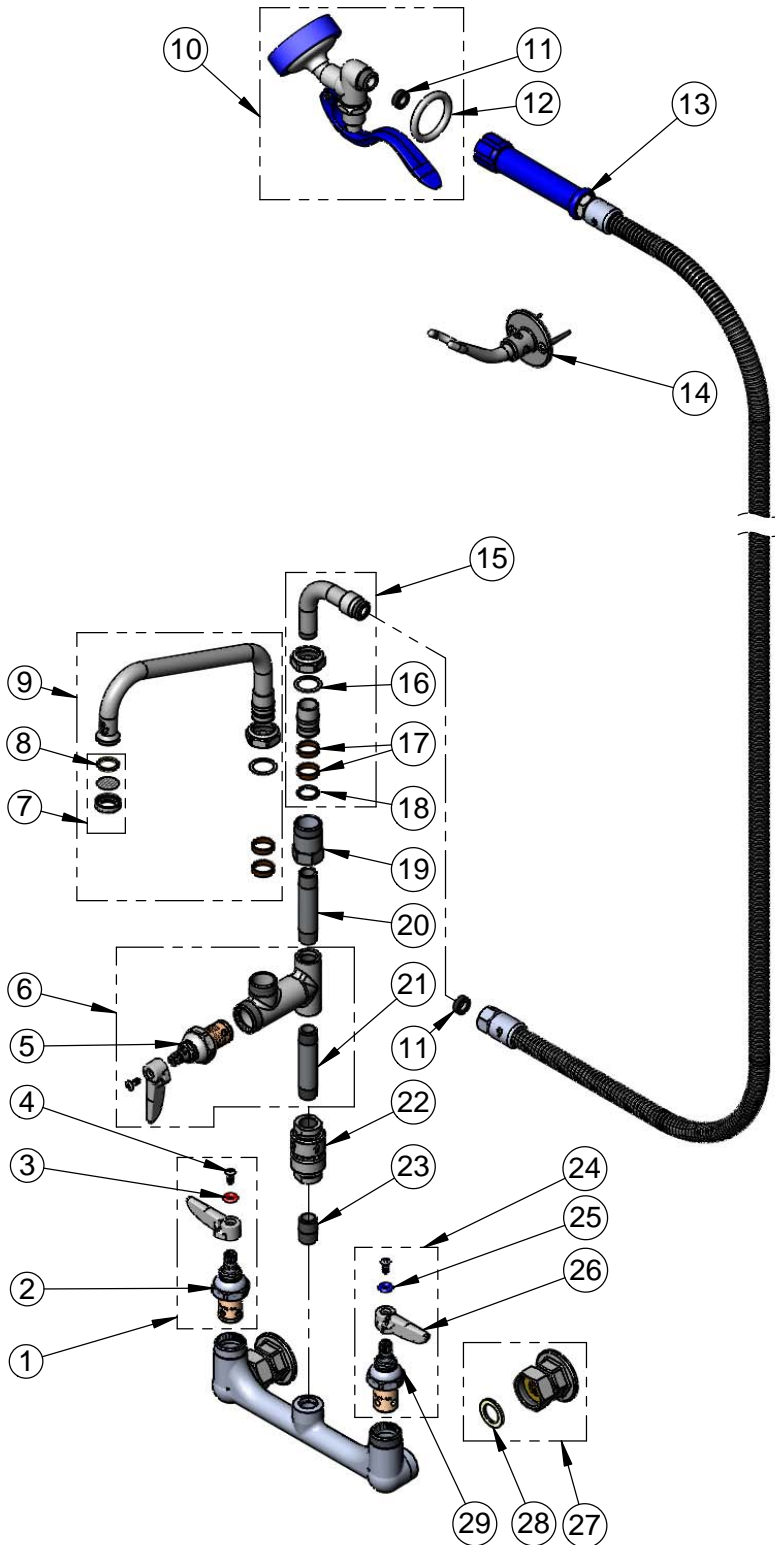
2 Saddleback Cove / P.O. Box 1088
Travelers Rest, SC 29690

Model No.

P3-8WESV-08M

Item No.

Travelers Rest, SC: 800-476-4103 • Simi Valley, CA: 800-423-0150 • Fax: 864-834-3518 • www.tsbrass.com



ITEM NO.	SALES NO.	DESCRIPTION
1	002712-40	Eterna Cartridge, RTC w/ Spring Check, Handle, Index & Screw
2	012443-40	Eterna Cartridge, RTC w/ Spring Check
3	001661-45	Red Index-HW
4	000922-45	Lever Handle Screw
5	005960-40QT	1/4 Turn Eterna Cartridge, RTC
6	B-0155-LN	Add-On Faucet
7	B-PT	Stream Regulator Outlet
8	001048-45	Nozzle Tip Washer
9	060X	8" Swing Nozzle
10	EB-0107-035	High Flow Angled Spray Valve (Blue)
11	010476-45	#27 Washer
12	000907-45	Spray Valve Hold Down Ring
13	EB-0096-H	96" Flexible Stainless Steel Hose w/ Blue Grip Handle
14	B-0166	Hanger Hook
15	034A	Swivel Adapter
16	009538-45	Swivel Washer
17	011429-45	Swivel Sleeves (2)
18	001074-45	O-Ring
19	054X	Swivel Body
20	000360-40	3/8" NPT x 4" Nipple
21	000358-40	3/8" NPT x 3" Nipple
22	B-0970-FE	3/8" NPT Vacuum Breaker
23	002535-25	3/8" Close Nipple
24	002711-40	Eterna Cartridge, LTC w/ Spring Check, Handle, Index & Screw
25	001660-45	Blue Index-CW
26	001638-45	Lever Handle
27	00AA	1/2" NPT Female Eccentric Flange
28	001019-45	Coupling Nut Washer
29	012442-40	Eterna Cartridge, LTC w/ Spring Check

Product Specifications:

8" Wall Mount Mixing Faucet, Eterna Cartridges w/ Spring Checks, Lever Handles, Add-On Faucet, 8" Swing Nozzle, Vacuum Breaker, High Flow Angled Spray Valve (Blue), 96" Flexible Stainless Steel Hose & 1/2" NPT Female Inlets

Product Compliance:

EPA Act 2005 Non-Compliant (PRSV)
CSA B64.8 (VB)
NSF 61 Exempt (Non-Potable)



T&S BRASS AND BRONZE WORKS, INC.

2 Saddleback Cove / P.O. Box 1088
Travelers Rest, SC 29690

Model No.

P3-8WESV-08M-CR

Item No.

Travelers Rest, SC: 800-476-4103 • Simi Valley, CA: 800-423-0150 • Fax: 864-834-3518 • www.tsbrass.com

This Space for Architect/Engineer Approval

Job Name _____ Date _____

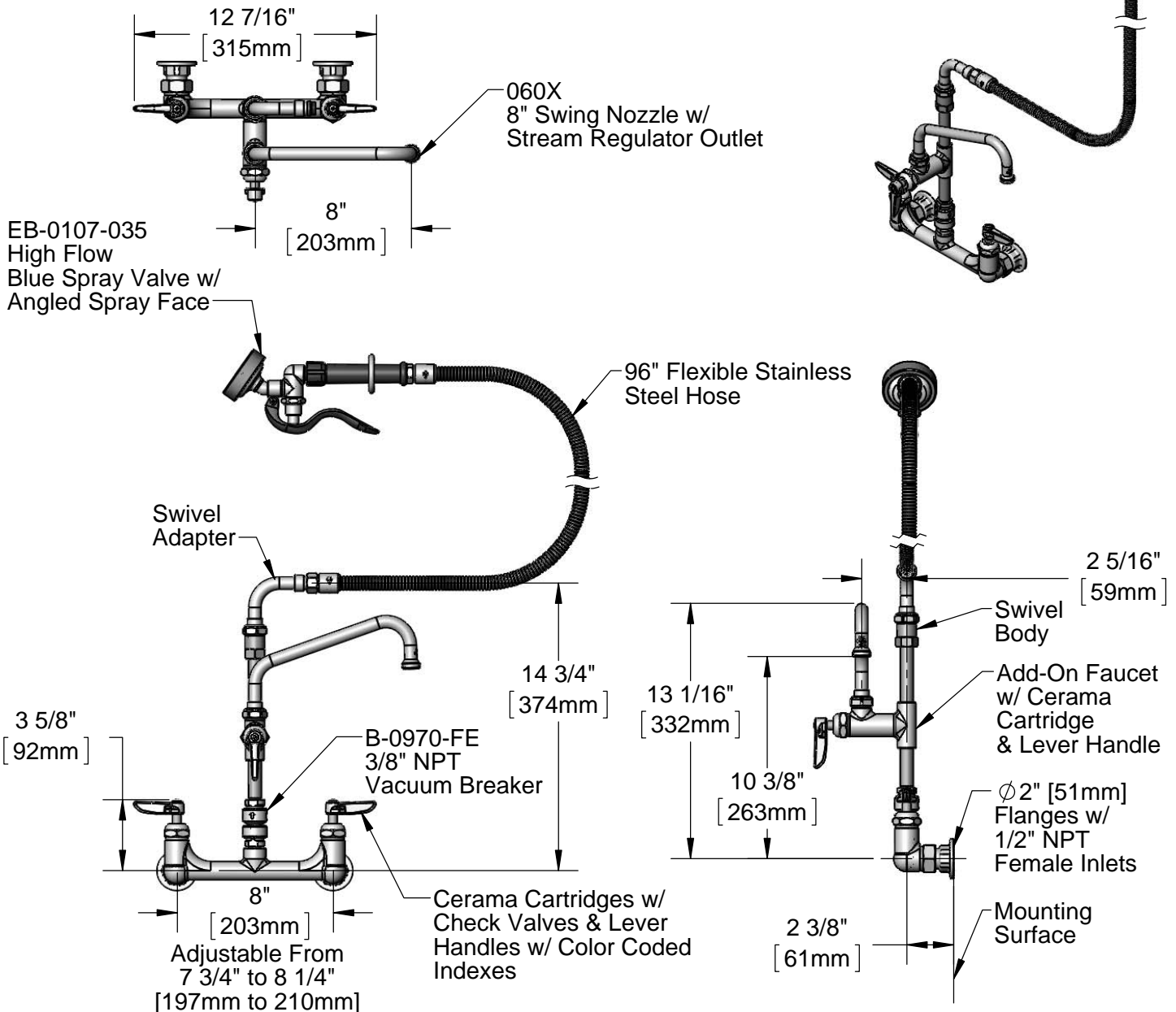
Model Specified _____ Quantity _____

Customer/Wholesaler _____

Contractor _____

Architect/Engineer _____

Hanger Hook
w/ Mounting Screws
(Included)

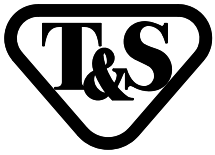


Product Specifications:

8" Wall Mount Mixing Faucet, Cerama Cartridges w/ Check Valves, Lever Handles, Add-On Faucet, 8" Swing Nozzle, Vacuum Breaker, Angled Spray Valve, 96" Flexible Stainless Steel Hose & 1/2" NPT Female Inlets

Product Compliance:

ASME A112.18.1 / CSA B125.1
NSF 61 Exempt (Non-Potable)
EPA Act 2005 Non-Compliant (PRSV)



T&S BRASS AND BRONZE WORKS, INC.

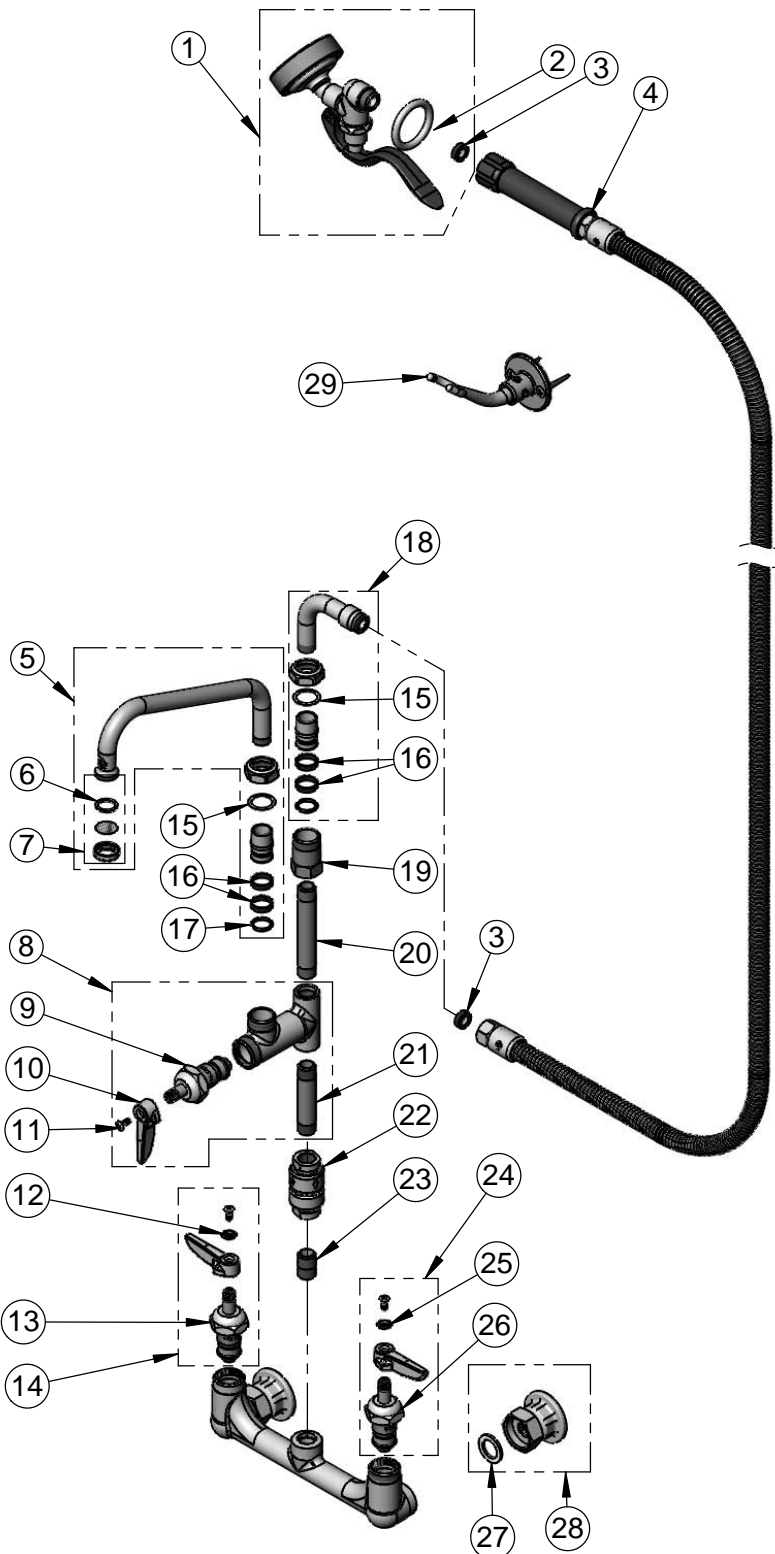
2 Saddleback Cove / P.O. Box 1088
Travelers Rest, SC 29690

Model No.

P3-8WESV-08M-CR

Item No.

Travelers Rest, SC: 800-476-4103 • Simi Valley, CA: 800-423-0150 • Fax: 864-834-3518 • www.tsbrass.com



ITEM NO.	SALES NO.	DESCRIPTION
1	EB-0107-035	Blue Spray Valve
2	000907-45	Spray Valve Hold Down Ring
3	010476-45	#27 Washer
4	EB-0096-H	96" Stainless Steel Flex Hose w/ Blue Grip Handle
5	060X	8" Swing Nozzle
6	001048-45	Nozzle Tip Washer
7	B-PT	Stream Regulator Outlet
8	B-0155-CR	Add-On Faucet w/ Cerama
9	011278-25	Cerama Cartridge, RTC
10	001638-45	Lever Handle
11	000922-45	Lever Handle Screw
12	001661-45	Red Index-HW
13	012394-25	Cerama Cartridge, RTC w/ Check Valve
14	012446-25	Cerama Cartridge, RTC w/ Check Valve, Handle, Index & Screw
15	009538-45	Swivel Washer
16	011429-45	Swivel Sleeves (2)
17	001074-45	O-Ring
18	034A	Swivel Adapter
19	054X	Swivel Body
20	000360-40	Nipple, 3/8" NPT x 4"
21	000358-40	Nipple, 3/8" NPT x 3"
22	B-0970-FE	3/8" NPT Vacuum Breaker
23	002535-25	3/8" Close Nipple
24	012447-25	Cerama Cartridge, LTC w/ Spring Check, Handle, Index & Screw
25	001660-45	Blue Index-CW
26	012395-25	Cerama Cartridge, LTC w/ Check Valve
27	001019-45	Coupling Nut Washer
28	00AA	1/2" NPT Female Eccentric Flange
29	B-0166	Hanger Hook

Product Specifications:

8" Wall Mount Mixing Faucet, Cerama Cartridges w/ Check Valves, Lever Handles, Add-On Faucet, 8" Swing Nozzle, Vacuum Breaker, Angled Spray Valve, 96" Flexible Stainless Steel Hose & 1/2" NPT Female Inlets

Product Compliance:

ASME A112.18.1 / CSA B125.1
NSF 61 Exempt (Non-Potable)
EPA Act 2005 Non-Compliant (PRSV)