



**T&S BRASS AND BRONZE WORKS, INC.**  
 2 SADDLEBACK COVE / P.O. BOX 1088 / TRAVELERS REST, SC 29690  
 PHONE 800-476-4103 - FAX 864- 834-3518



Sales No.

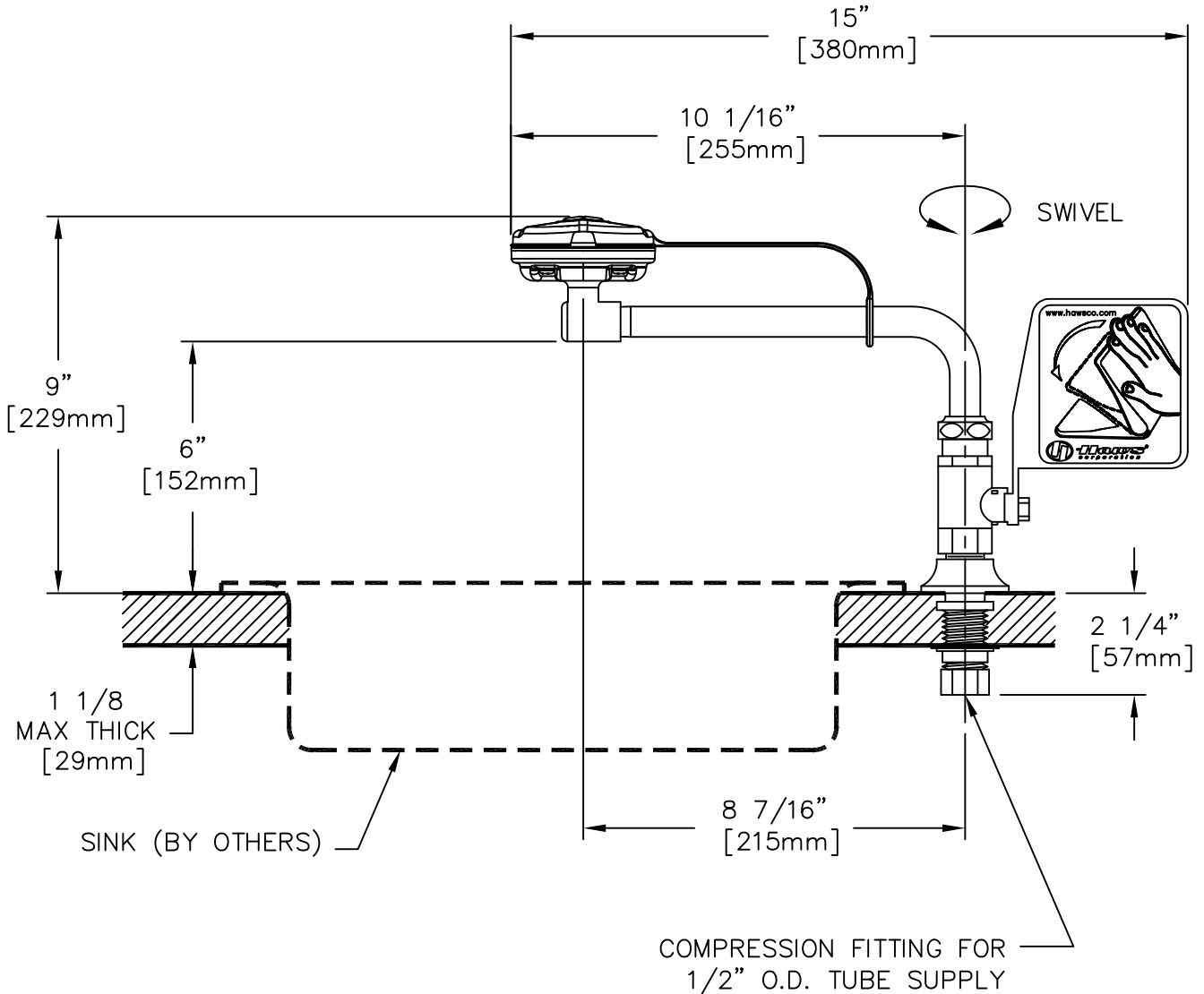
EW-7612

**RELIABILITY  
 BUILT IN**

Job Name:

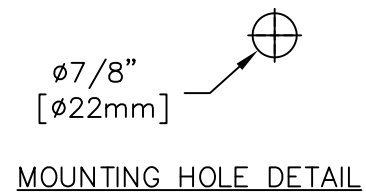
Architect/Engineer Approval:

Notes:



NOTES:

- ANSI STANDARD Z358.1 SPECIFIES EYEWASH NOZZLE HEIGHTS TO BE 33" [838mm] TO 45" [1143mm] ABOVE THE FLOOR. CENTERLINE OF EYEWASH HEADS MUST BE 6" [152mm] MIN. AWAY FROM WALL.
- DIMENSIONS MAY VARY ±1/2" [12.7mm].



Product Description:  
 DECK MOUNTED EYE WASH, POLISHED CHROME  
 (RIGHT SIDE MOUNT)

Drawn: DMH	Checked GEF	Scale: 1:4
Approved JHB	Date: 12/20/10	



**T&S BRASS AND BRONZE WORKS, INC.**  
 2 SADDLEBACK COVE / P.O. BOX 1088 / TRAVELERS REST, SC 29690  
 PHONE 800-476-4103 - FAX 864- 834-3518



Sales No.

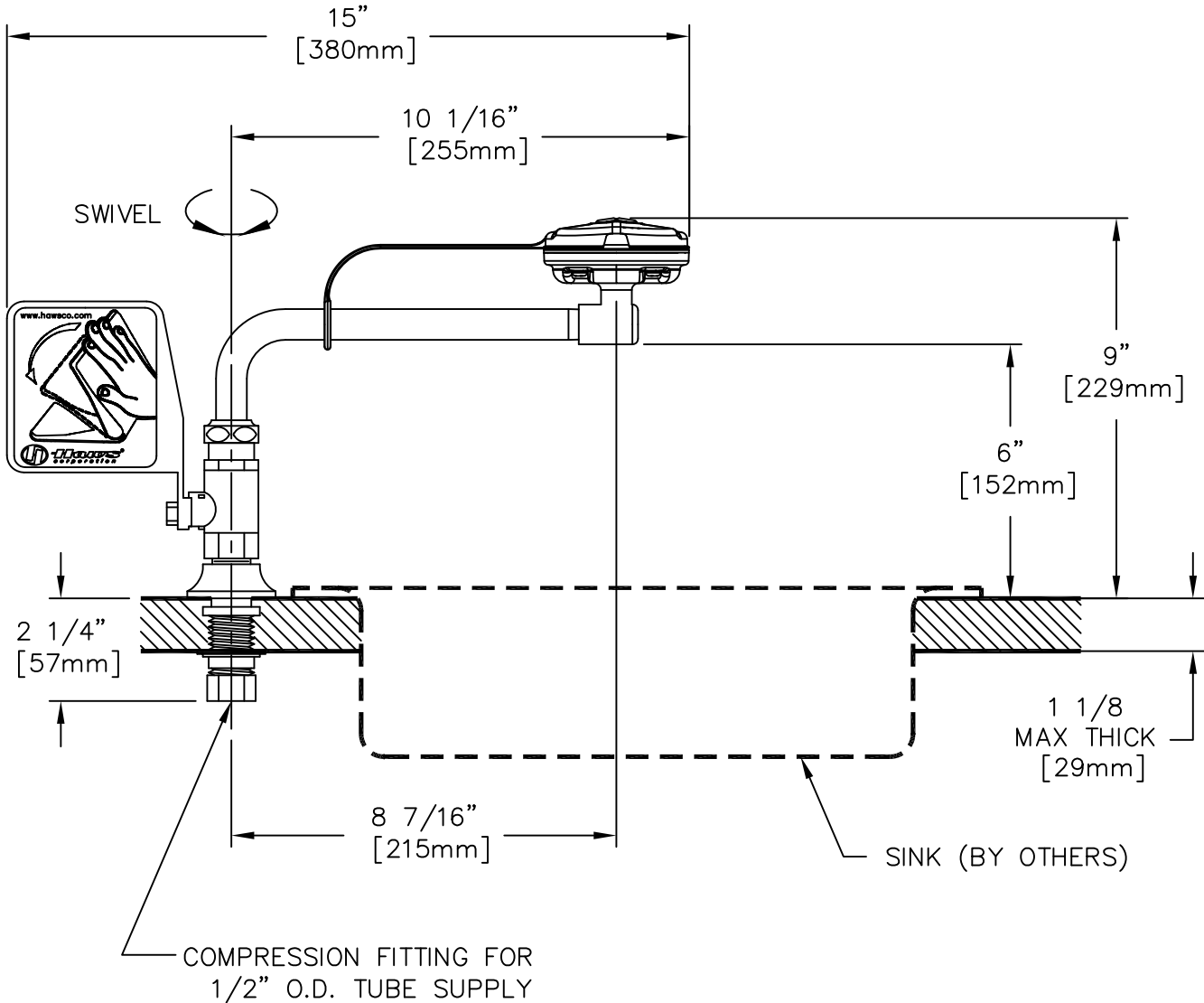
EW-7612LH

**RELIABILITY  
BUILT IN**

Job Name:

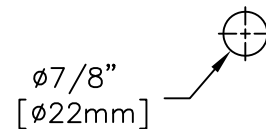
Architect/Engineer Approval:

Notes:



NOTES:

- ANSI STANDARD Z358.1 SPECIFIES EYEWASH NOZZLE HEIGHTS TO BE 33" [838mm] TO 45" [1143mm] ABOVE THE FLOOR. CENTERLINE OF EYEWASH HEADS MUST BE 6" [152mm] MIN. AWAY FROM WALL.
- DIMENSIONS MAY VARY  $\pm 1/2"$  [12.7mm].



MOUNTING HOLE DETAIL

Product Description:  
 DECK MOUNTED EYEWASH, POLISH CHROME  
 (LEFT SIDE MOUNT)

Drawn: DMH	Checked GEF	Scale: 1:4
Approved JHB	Date: 12/20/10	