



# T&S BRASS AND BRONZE WORKS, INC.

2 Saddleback Cove / P.O. Box 1088  
Travelers Rest, SC 29690

Model No.

**BL-9505-01**

Item No.

Travelers Rest, SC: 800-476-4103 • Simi Valley, CA: 800-423-0150 • Fax: 864-834-3518 • www.tsbrass.com

This Space for Architect/Engineer Approval

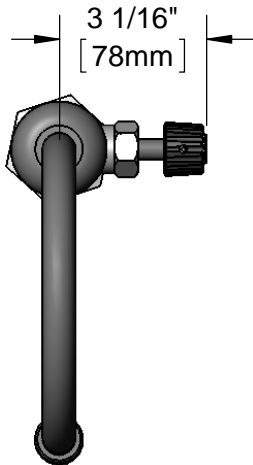
Job Name \_\_\_\_\_ Date \_\_\_\_\_

Model Specified \_\_\_\_\_ Quantity \_\_\_\_\_

Customer/Wholesaler \_\_\_\_\_

Contractor \_\_\_\_\_

Architect/Engineer \_\_\_\_\_



3 1/16"  
[78mm]

Rigid Gooseneck w/  
Removable Serrated Tip

Black Polypropylene  
Handle w/ Color Coded  
Index. Stamped "DW"  
for Distilled Water.

11 7/8"  
[302mm]

6 3/16"  
[157mm]

4 15/16"  
[125mm]

Mounting Surface

Ø 1 1/4"  
[32mm]

Lock Nut

Ø 2"  
[51mm]

3/8" NPT  
Female Inlet

1 1/2"  
[38mm]  
Maximum  
Thickness

Rough-In Requirement:  
Ø 1 1/2" [38mm] Mounting Hole

Product Specifications:  
Single Hole Deck Mount Gray PVC Faucet, Rigid Gooseneck, Serrated Tip,  
& 3/8" NPT Female Inlet for Distilled or Deionized Water Applications

Product Compliance:  
ASME A112.18.1 / CSA B125.1  
NSF 61 Exempt (Non-Potable)



**T&S BRASS AND BRONZE WORKS, INC.**  
 2 Saddleback Cove / P.O. Box 1088  
 Travelers Rest, SC 29690

Model No.  
**BL-9505-01**

Item No.

Travelers Rest, SC: 800-476-4103 • Simi Valley, CA: 800-423-0150 • Fax: 864-834-3518 • www.tsbrass.com

ITEM NO.	SALES NO.	DESCRIPTION
1	209L-DW	White DW Snap-In Index
2	001492-20	Knob, PVC
3	007549-40	PVC Faucet Bonnet
4	000512-20	Nut, PVC Lock
5	BL-9541-02	PVC Faucet, Rigid Gooseneck w/ Serrated Tip
6	000938-45	Set Screw



**Product Specifications:**

Single Hole Deck Mount Gray PVC Faucet, Rigid Gooseneck, Serrated Tip, & 3/8" NPT Female Inlet for Distilled or Deionized Water Applications

**Product Compliance:**

ASME A112.18.1 / CSA B125.1  
 NSF 61 Exempt (Non-Potable)



# T&S BRASS AND BRONZE WORKS, INC.

2 Saddleback Cove / P.O. Box 1088  
Travelers Rest, SC 29690



REG. #A2601  
ISO #9001

Model No.

**BL-9505-02**

Item No.

Travelers Rest, SC: 800-476-4103 Simi Valley, CA: 800-423-0150 Fax: 864-834-3518 www.tsbrass.com

This Space for Architect/Engineer Approval

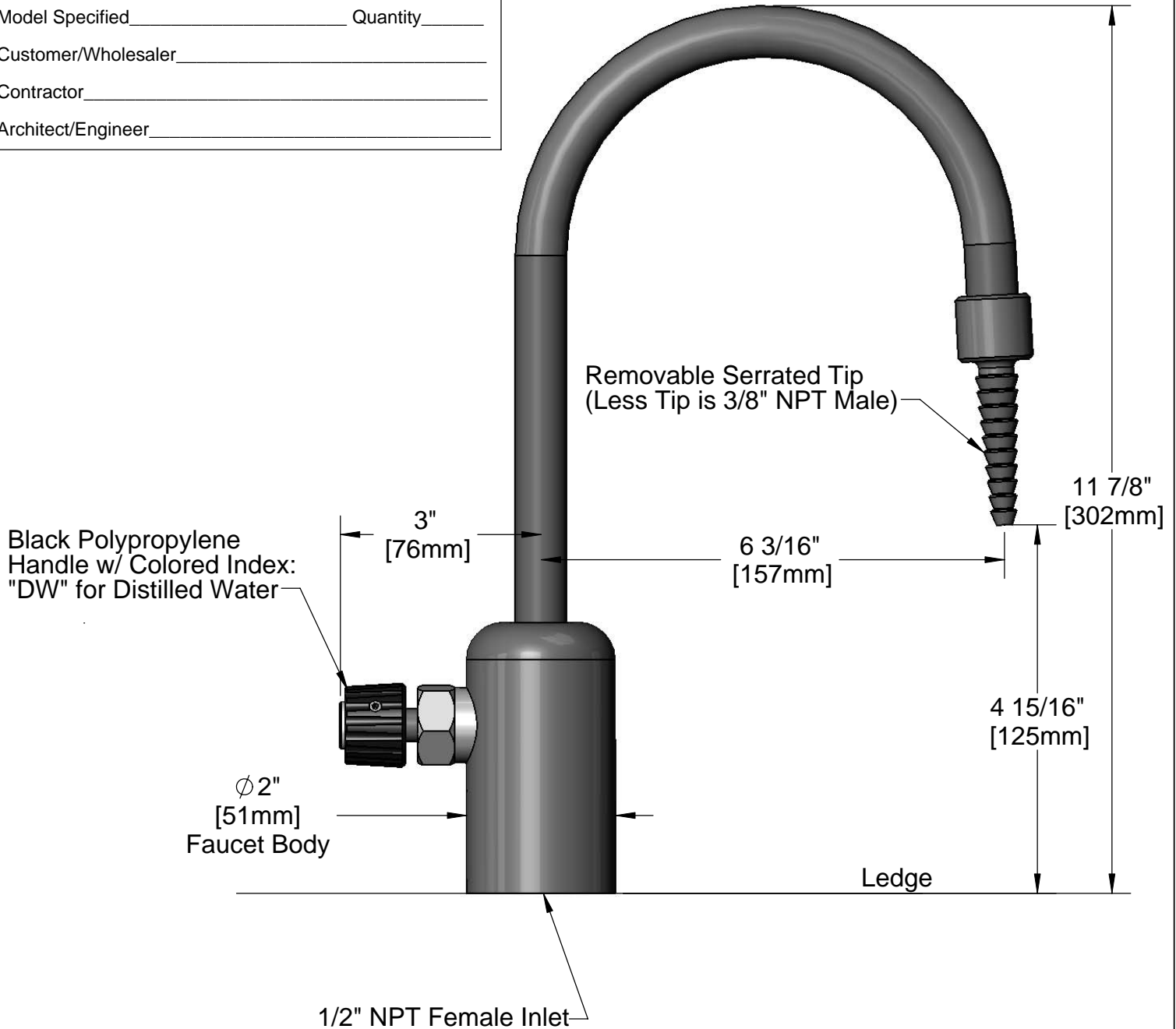
Job Name \_\_\_\_\_ Date \_\_\_\_\_

Model Specified \_\_\_\_\_ Quantity \_\_\_\_\_

Customer/Wholesaler \_\_\_\_\_

Contractor \_\_\_\_\_

Architect/Engineer \_\_\_\_\_



Product Specifications:

Gray PVC Single Ledge Faucet w/ Rigid Gooseneck, Serrated Tip Outlet, & 1/2" NPT Female Inlet for Distilled or Deionized Water Applications

Drawn <b>JRM</b>	Checked <b>DMH</b>	Approved <b>JHB</b>
Scale: <b>1:2</b>		Date: <b>07/02/09</b>



**T&S BRASS AND BRONZE WORKS, INC.**

2 Saddleback Cove / P.O. Box 1088  
Travelers Rest, SC 29690



REG. #A2601  
ISO #9001

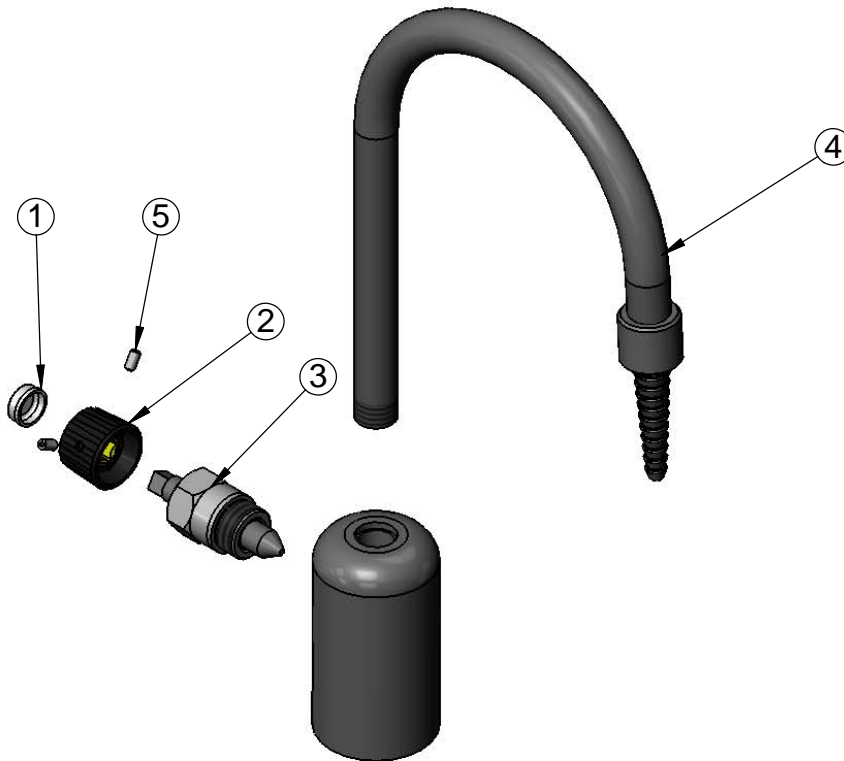
Model No.

**BL-9505-02**

Item No.

Travelers Rest, SC: 800-476-4103 Simi Valley, CA: 800-423-0150 Fax: 864-834-3518 www.tsbrass.com

ITEM NO.	SALES NO.	DESCRIPTION
1	001206-45	Index, White Snap-In, DW
2	001492-20	Knob, PVC
3	007549-40	Bonnet Assembly, PVC
4	BL-9541-02	PVC Gooseneck & Serrated Tip Asm
5	000938-45	Set Screw (1)



Product Specifications:

Gray PVC Single Ledge Faucet w/ Rigid Gooseneck, Serrated Tip Outlet, & 1/2" NPT Female Inlet for Distilled or Deionized Water Applications

Drawn <b>JRM</b>	Checked <b>DMH</b>	Approved <b>JHB</b>
Scale: <b>NTS</b>		Date: <b>07/02/09</b>