



T&S BRASS AND BRONZE WORKS, INC.

2 SADDLEBACK COVE / P.O. BOX 1088 / TRAVELERS REST, SC 29690

PHONE 800-476-4103

FAX 864-834-3518



REG.#A2601
ISO #9002

Model No.

BL-5725-01

Item No.:

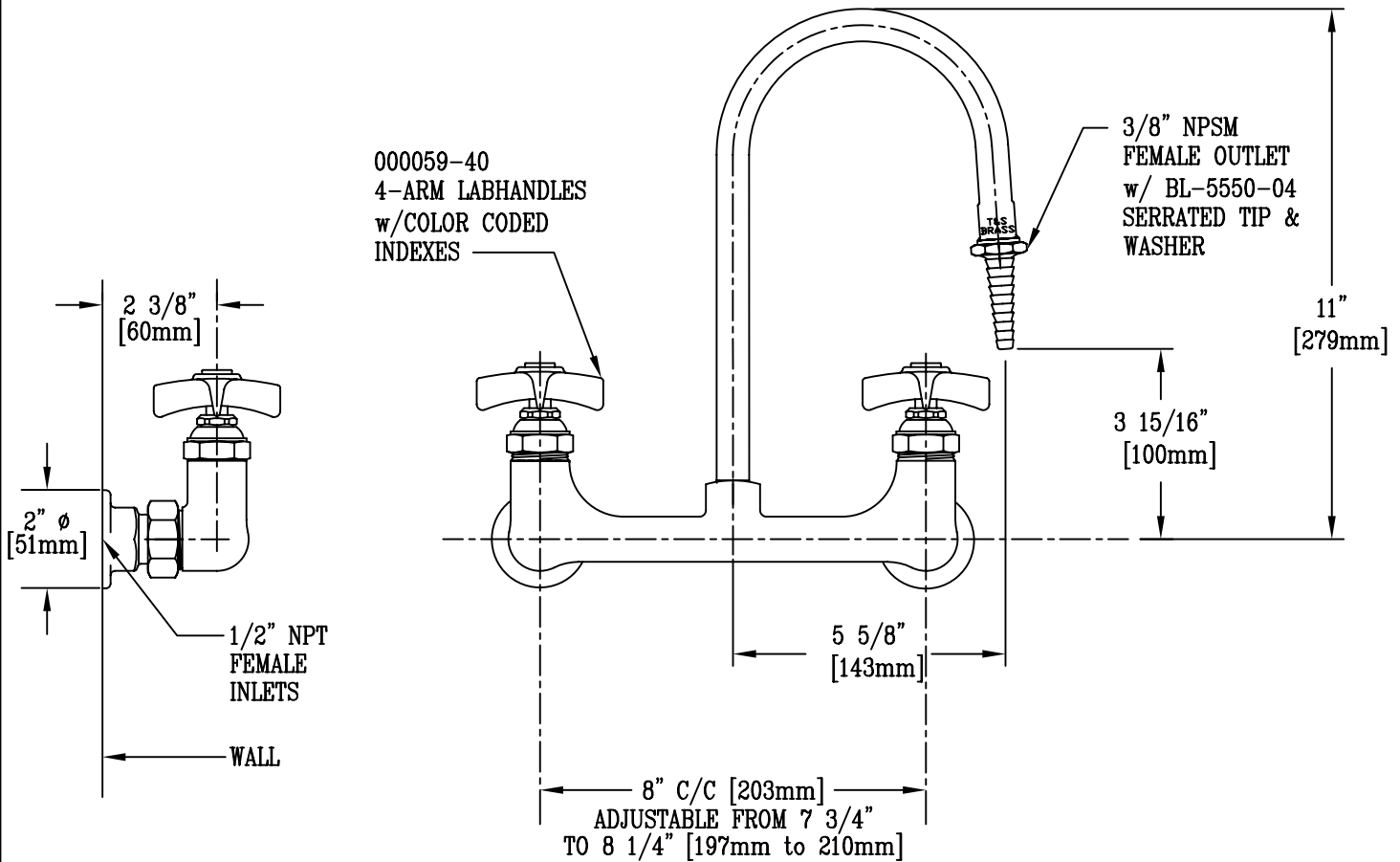
Job Name:

Architect/Engineer Approval:

Notes:



ADA COMPLIANT



NOTE 1: 3/4" FEMALE INLETS ALSO AVAILABLE.

NOTE 2: ALSO AVAILABLE W/ BL-5500-3 6" WRIST ACTION HANDLES, OR BL-5500-1 4" WRIST ACTION HANDLES.

Product Description:

WALL MOUNTED MIXING FAUCET w/
RIGID GOOSENECK, SERRATED TIP OUTLET, 4-ARM
HANDLES, & 1/2" NPT FEMALE INLETS.

Drawn:

KJG

Checked

DHL

Scale:

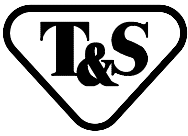
1 : 4

Approved

JHB

Date:

07/23/09



T&S BRASS AND BRONZE WORKS, INC.

2 SADDLEBACK COVE / P.O. BOX 1088 / TRAVELERS REST, SC 29690

PHONE 800-476-4103

FAX 803- 834-3518



REG.#A2601
ISO #9002

Model No.

BL-5725-02

Item No.:

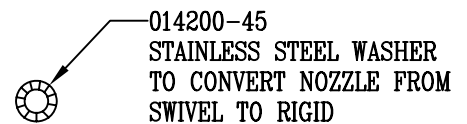
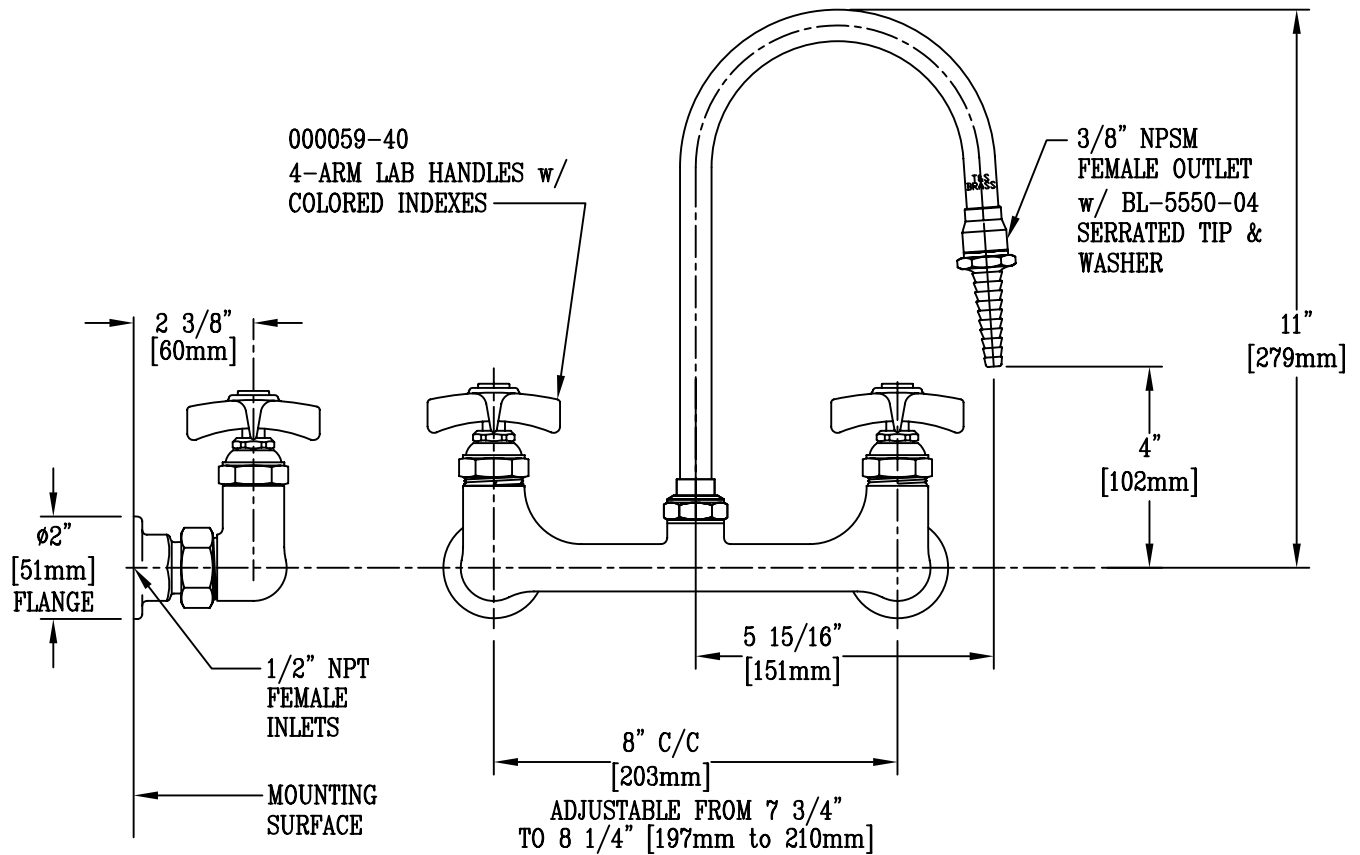
Job Name:

Architect/Engineer Approval:

Notes:



ADA COMPLIANT



Product Description:

WALL MOUNTED MIXING FAUCET w/
SWIVEL GOOSENECK, SERRATED TIP OUTLET, 4-ARM
HANDLES, & 1/2" NPT FEMALE INLETS

Drawn:

KJG

Checked

dhl

Scale:

1:4

Approved

jhb

Date:

07/23/09