



T&S BRASS AND BRONZE WORKS, INC.

2 SADDLEBACK COVE / P.O. BOX 1088 / TRAVELERS REST, SC 29690

PHONE 800-476-4103

FAX 864- 834-3518



REG.#A2601
ISO #9002

Model No.

BL-5715-01

Item No.:

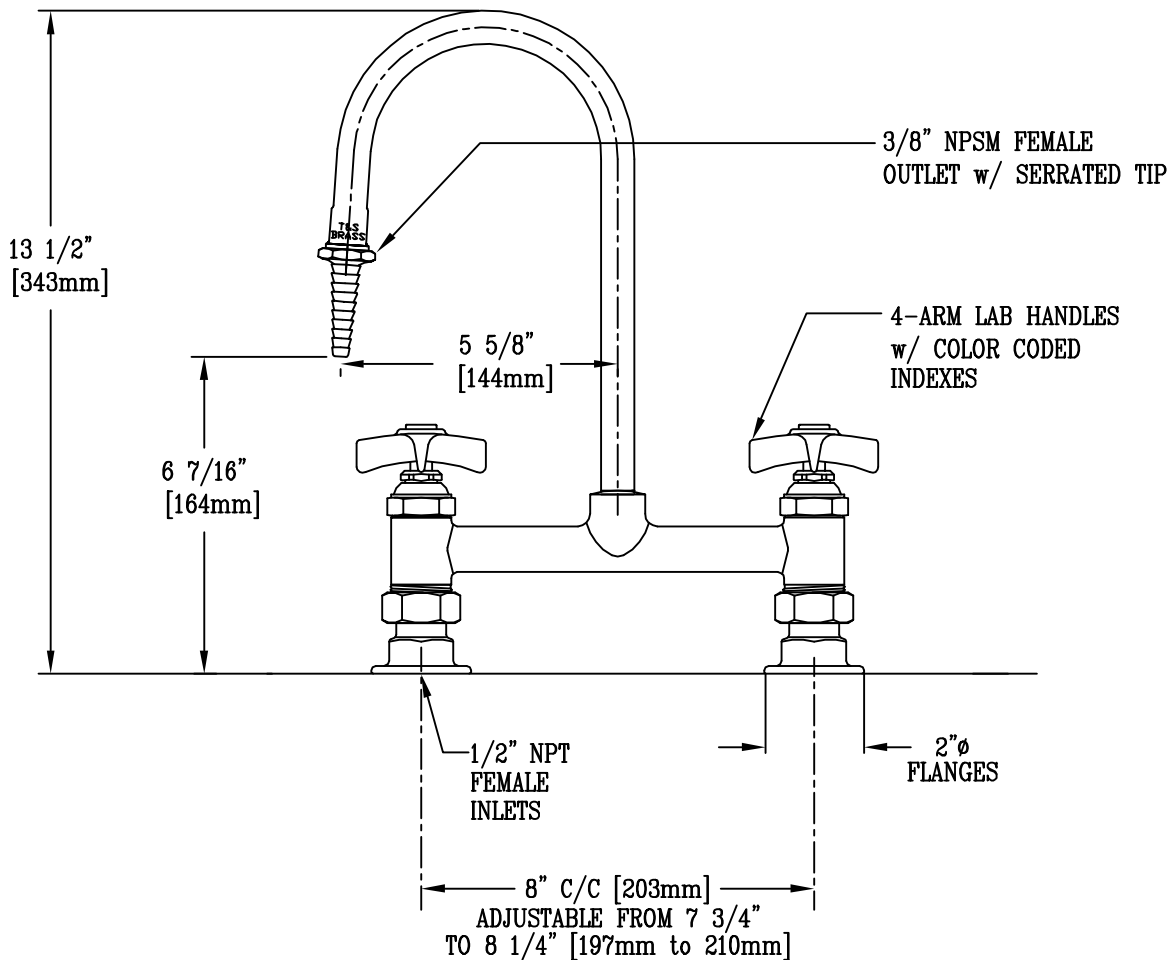
Job Name:

Architect/Engineer Approval:

Notes:



ADA COMPLIANT



ALSO AVAILABLE W/ BL-5500-3
6" WRIST ACTION HANDLES, OR BL-5500-1
4" WRIST ACTION HANDLES.

Product Description:

DECK MOUNTED MIXING FAUCET WITH RIGID GOOSENECK, SERRATED TIP, 4-ARM HANDLES, & 1/2" NPT FEMALE INLETS.

Drawn:

WJS

Approved

MVW

Checked

MVW

Scale:

1:4

Date:

6-16-99



T&S BRASS AND BRONZE WORKS, INC.
 2 SADDLEBACK COVE / P.O. BOX 1088 / TRAVELERS REST, SC 29690
 PHONE 800-476-4103 FAX 864-834-3518



Model No.
 BL-5715-02
 Item No.:

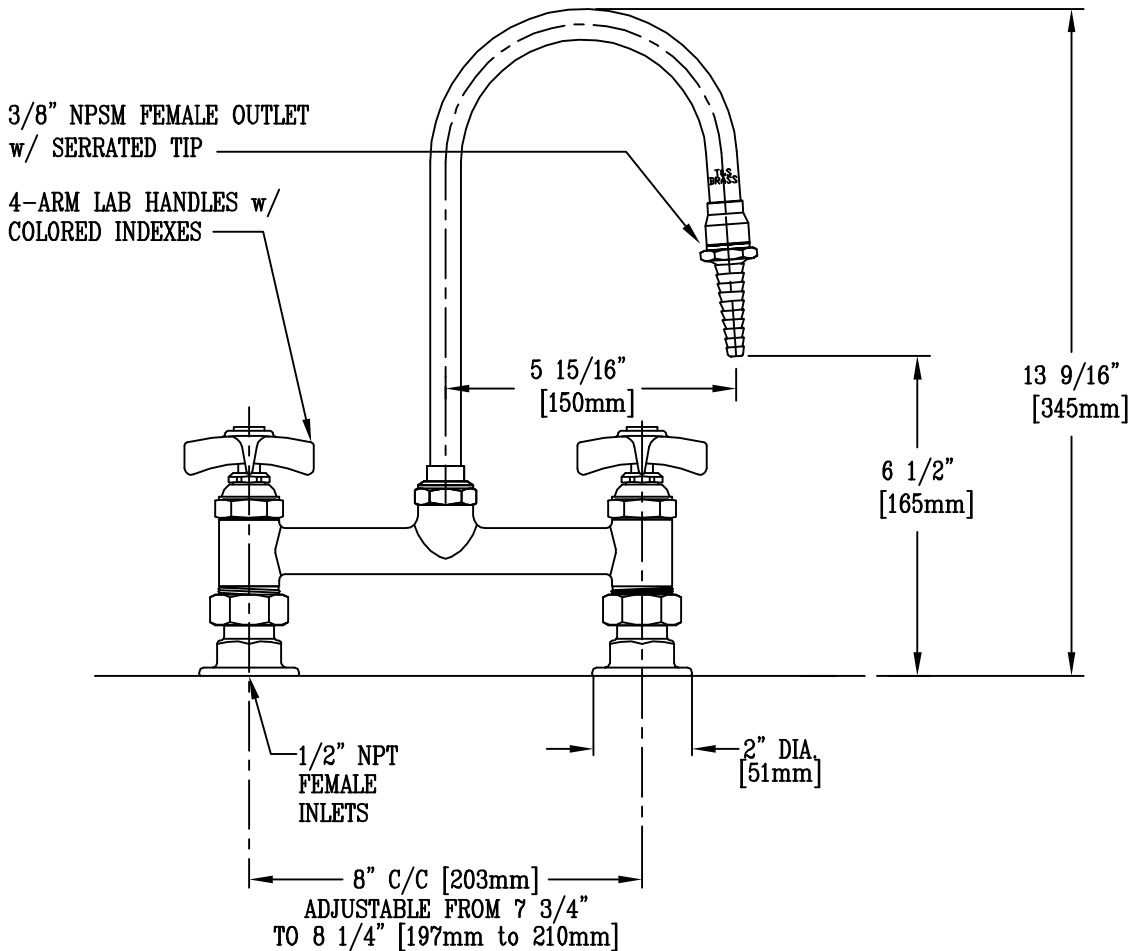
Job Name:

Architect/Engineer Approval:

Notes:



ADA COMPLIANT



Product Description:

DECK MOUNTED MIXING FAUCET WITH SWIVEL GOOSENECK, SERRATED TIP OUTLET, 4-ARM HANDLES, & 1/2" NPT FEMALE INLETS.

Drawn:

WJS

Approved

MVW

Checked

MVW

Scale:

1 : 4

Date:

6-15-99