



**T&S BRASS AND BRONZE WORKS, INC.**  
 2 Saddleback Cove / P.O. Box 1088  
 Travelers Rest, SC 29690

Model No.  
**B-0455**

Item No.

Travelers Rest, SC: 800-476-4103 • Simi Valley, CA: 800-423-0150 • Fax: 864-834-3518 • www.tsbrass.com

This Space for Architect/Engineer Approval

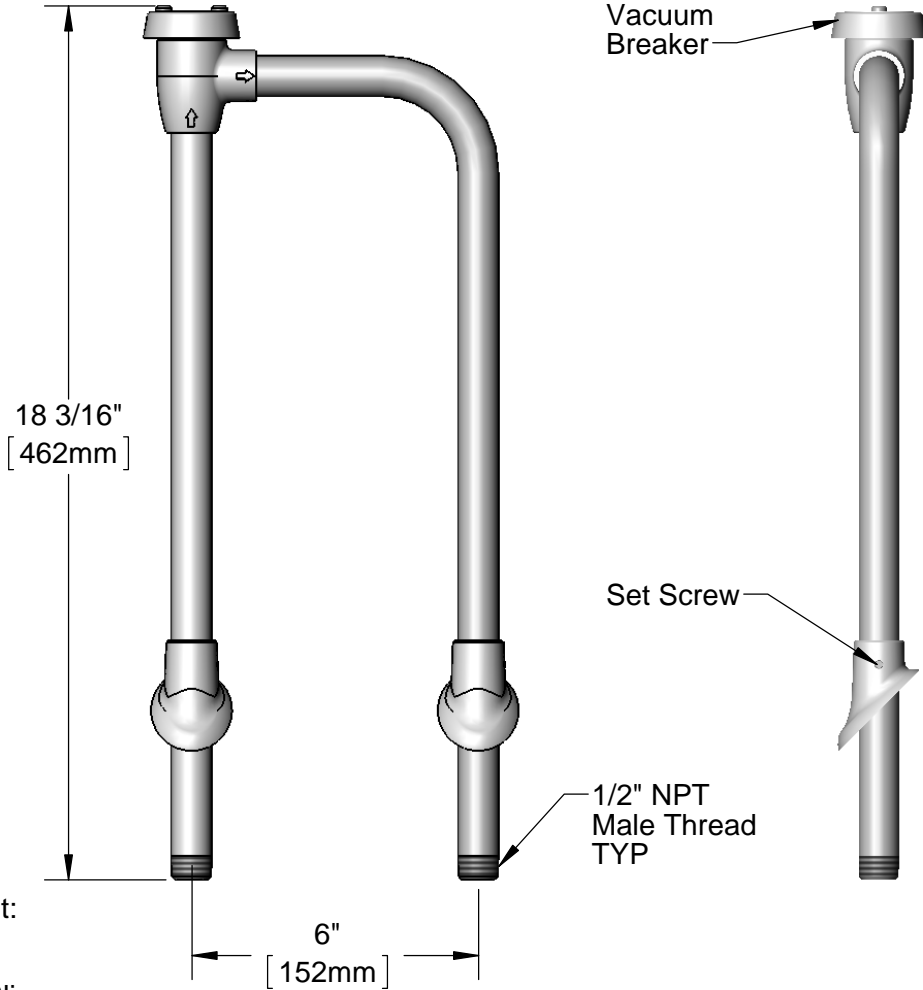
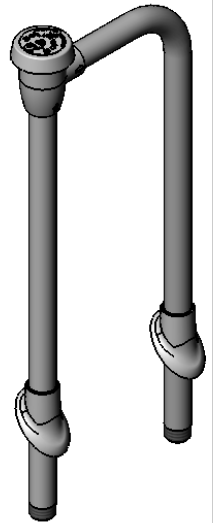
Job Name \_\_\_\_\_ Date \_\_\_\_\_

Model Specified \_\_\_\_\_ Quantity \_\_\_\_\_

Customer/Wholesaler \_\_\_\_\_

Contractor \_\_\_\_\_

Architect/Engineer \_\_\_\_\_



Note:  
 Pipe Must be Held Rigid Under Sink by Connection Fittings, Brace, Etc.

Rough-In Requirement:  
 (2) Ø1 1/4" [32mm]  
 Hole in Center of 45°  
 Mounting Surface to Slip  
 1/2" Pipe Through

Product Specifications:  
 1/2" NPT Vacuum Breaker Unit, 6" c/c

Product Compliance:  
 ASME A112.18.1 / CSA B125.1  
 NSF 61 - Section 9  
 NSF 372 (Low Lead Content)  
 ASSE 1001



T&S BRASS AND BRONZE WORKS, INC.

2 SADDLEBACK COVE / P.O. BOX 1088 / TRAVELERS REST, SC 29690

PHONE 800-476-4103

FAX 864-834-3518



REG.#A2601  
ISO #9002

Model No.

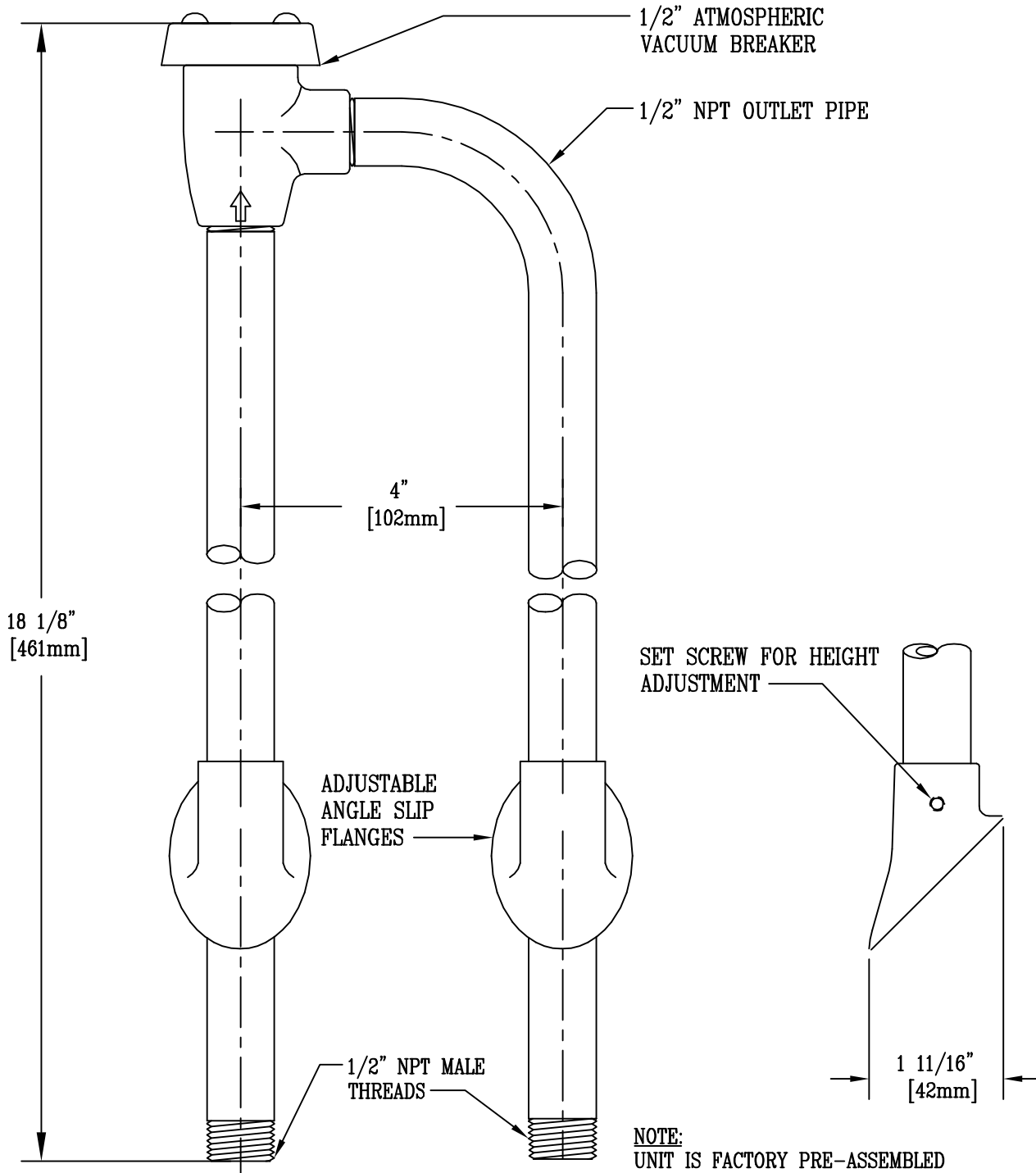
B-0455-04

Item No.:

Job Name:

Architect/Engineer Approval:

Notes:



Product Description:

B-0455 w/ 4" c/c MOUNTING  
FACTORY PRE-ASSEMBLED

Drawn:

WJS

Checked

JKD

Scale:

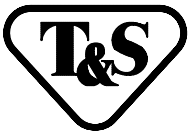
1 : 2

Approved

MVW

Date:

5/1/02



T&S BRASS AND BRONZE WORKS, INC.

2 SADDLEBACK COVE / P.O. BOX 1088 / TRAVELERS REST, SC 29690

PHONE 800-476-4103

FAX 864-834-3518



REG.#A2601  
ISO #9002

Model No.

B-0456

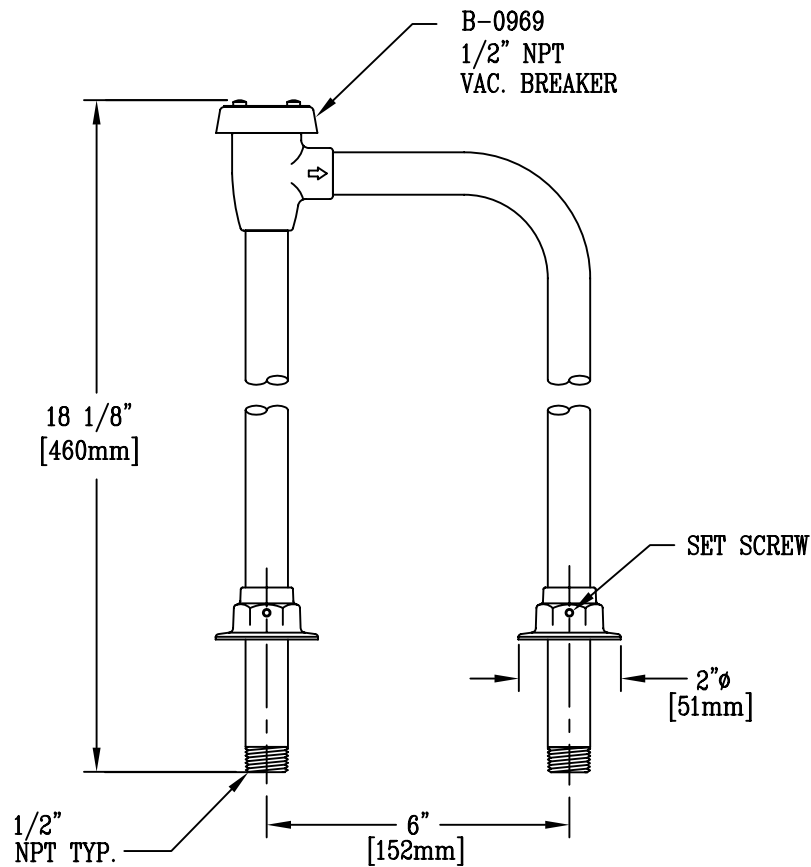
Item No.:

Job Name:

Architect/Engineer Approval:

Notes:

PIPES MUST BE HELD  
RIGID UNDER SINK BY  
CONNECTION FITTINGS,  
BRACE, ETC.



Product Description:

VACUUM BREAKER-1/2" NPT

Drawn:

DHL

Checked

JRM

Scale:

1:4

Approved

JHB

Date:

10/01/09



T&S BRASS AND BRONZE WORKS, INC.  
 2 SADDLEBACK COVE / P.O. BOX 1088 / TRAVELERS REST, SC 29690  
 PHONE 800-476-4103 FAX 864-834-3518



Model No.

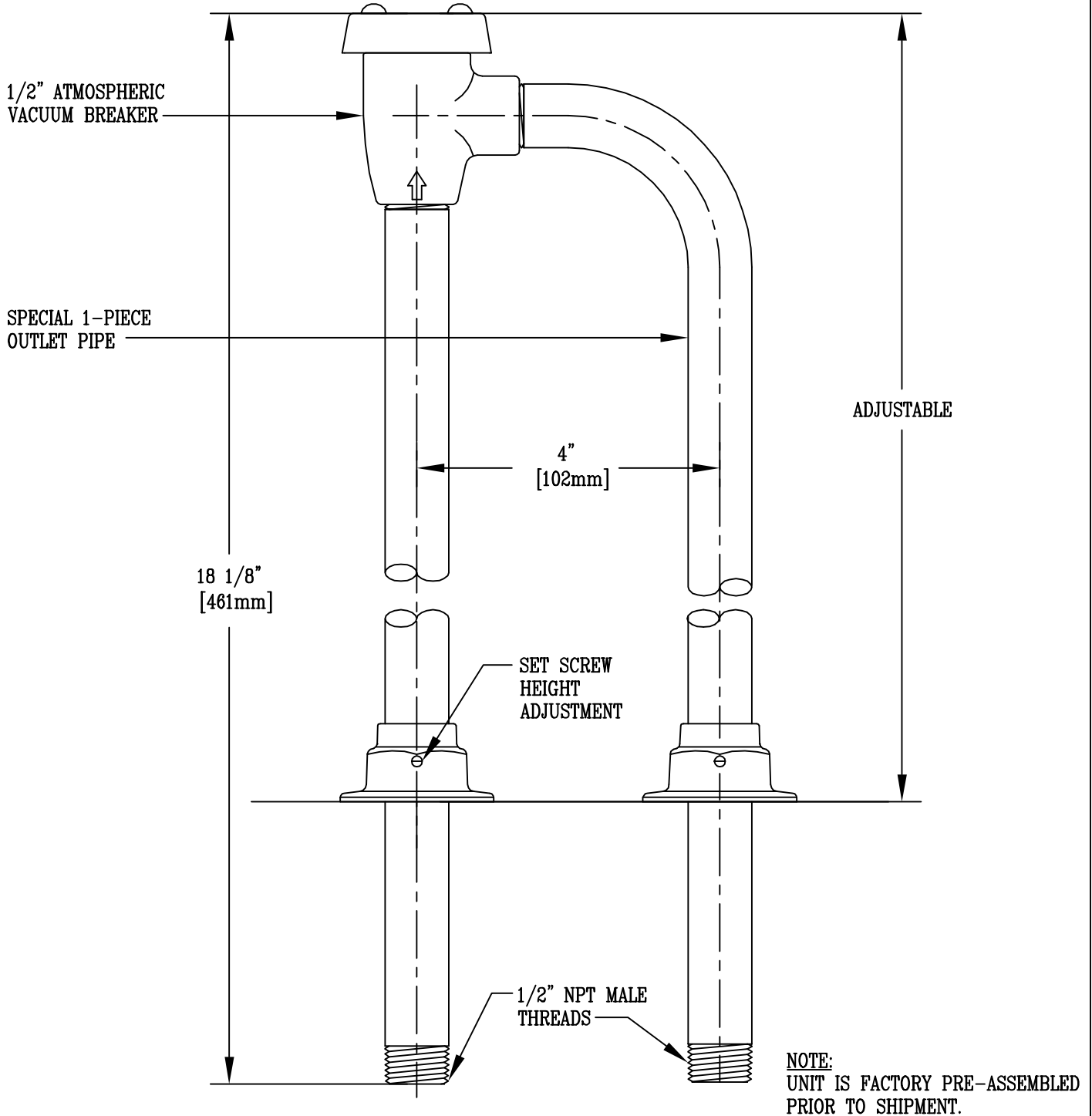
B-0456-04

Item No.:

Job Name:

Architect/Engineer Approval:

Notes:



Product Description:

B-0456 w/ 4" c/c MOUNTING  
 FACTORY PRE-ASSEMBLED

Drawn:

WJS

Approved

MVW

Checked

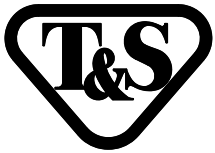
JKD

Scale:

1 : 2

Date:

1/4/99

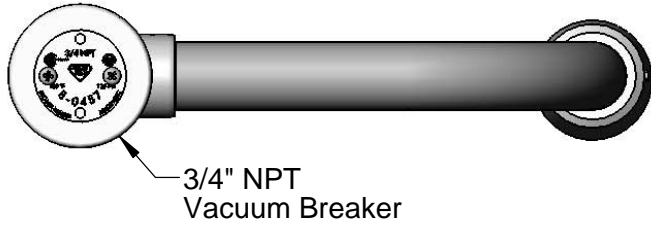


**T&S BRASS AND BRONZE WORKS, INC.**  
 2 Saddleback Cove / P.O. Box 1088  
 Travelers Rest, SC 29690

Model No.  
**B-0457**

Item No.

Travelers Rest, SC: 800-476-4103 • Simi Valley, CA: 800-423-0150 • Fax: 864-834-3518 • www.tsbrass.com



3/4" NPT  
 Vacuum Breaker

This Space for Architect/Engineer Approval

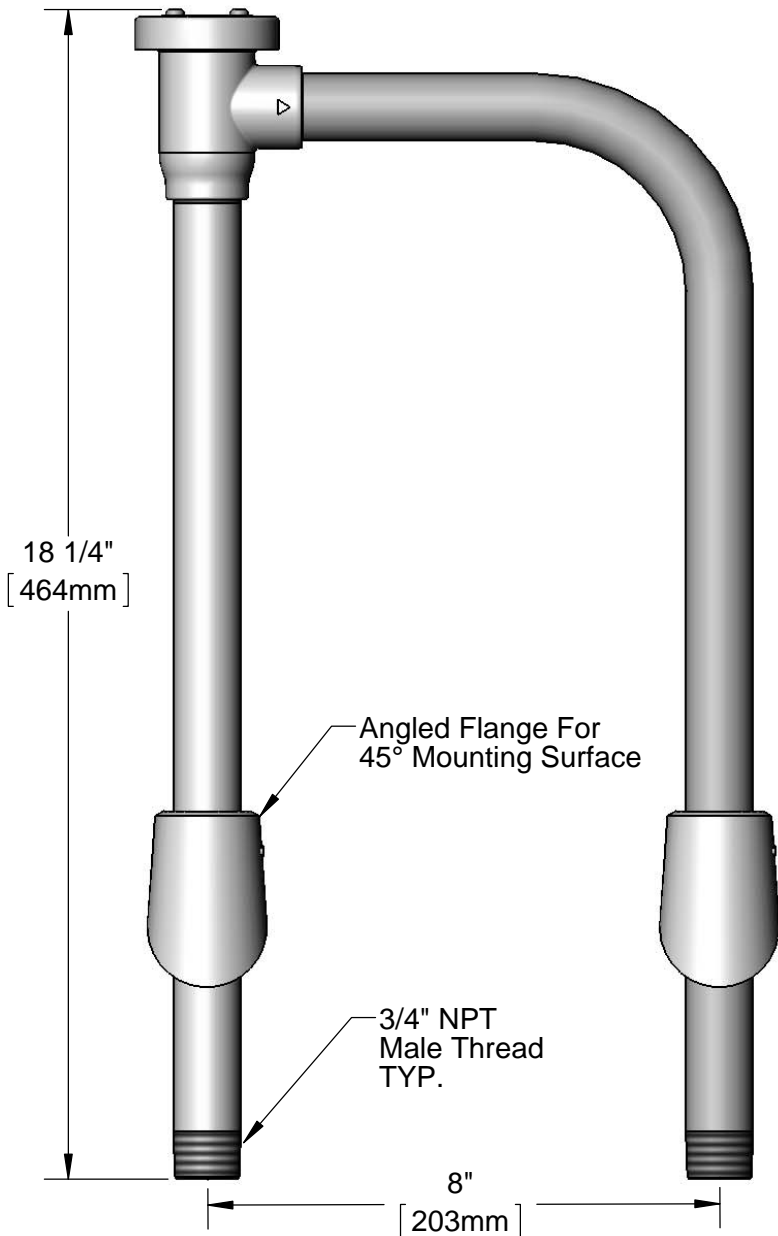
Job Name \_\_\_\_\_ Date \_\_\_\_\_

Model Specified \_\_\_\_\_ Quantity \_\_\_\_\_

Customer/Wholesaler \_\_\_\_\_

Contractor \_\_\_\_\_

Architect/Engineer \_\_\_\_\_

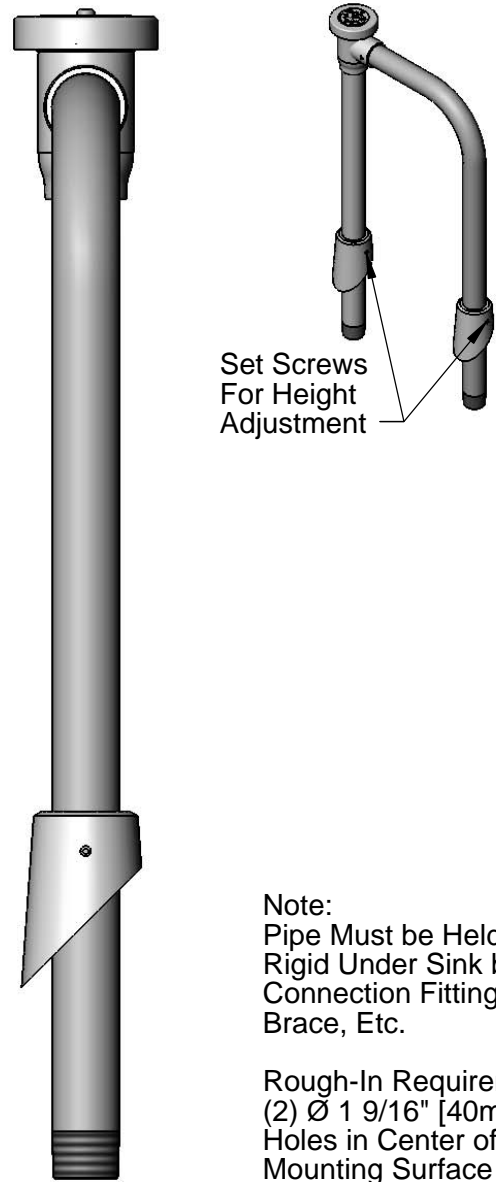


18 1/4"  
 [464mm]

Angled Flange For  
 45° Mounting Surface

3/4" NPT  
 Male Thread  
 TYP.

8"  
 [203mm]



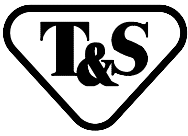
Set Screws  
 For Height  
 Adjustment

Note:  
 Pipe Must be Held  
 Rigid Under Sink by  
 Connection Fittings,  
 Brace, Etc.

Rough-In Requirement:  
 (2) Ø 1 9/16" [40mm]  
 Holes in Center of 45°  
 Mounting Surface to  
 Slip 3/4" Pipe Through.

Product Specifications:  
 3/4" NPT Vacuum Breaker Unit, 8" c/c

Product Compliance:  
 ASME A112.18.1 / CSA B125.1  
 NSF 61 - Section 9  
 NSF 372 (Low Lead Content)  
 ASSE 1001



T&S BRASS AND BRONZE WORKS, INC.

2 SADDLEBACK COVE / P.O. BOX 1088 / TRAVELERS REST, SC 29690

PHONE 800-476-4103

FAX 803- 834-3518



REG.#A2601  
ISO #9002

Model No.

B-0458

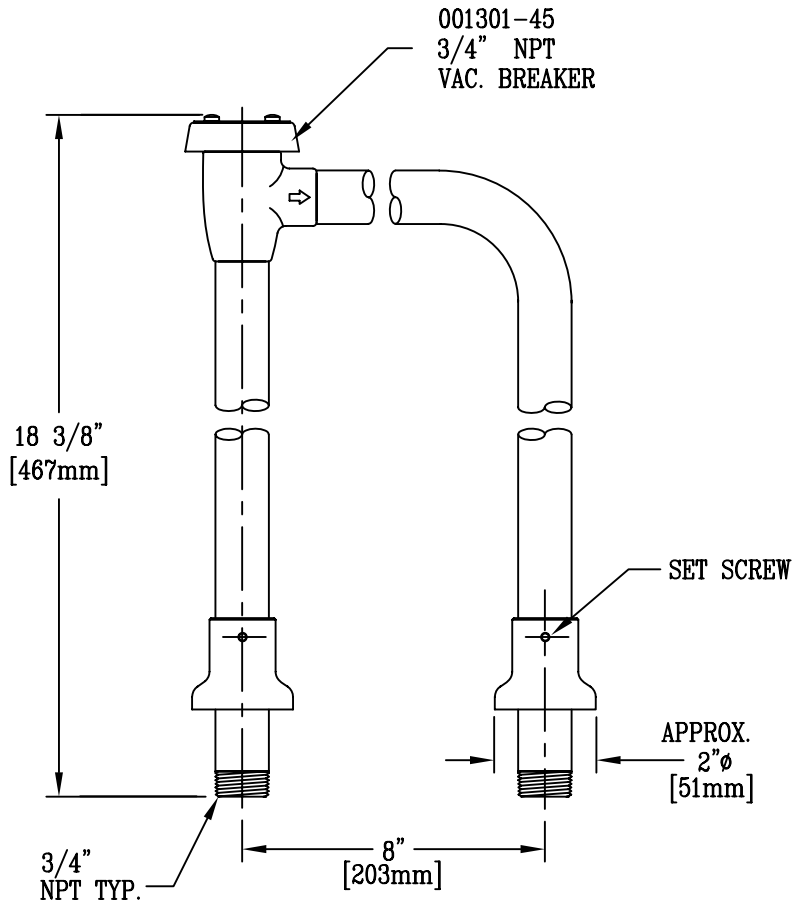
Item No.:

Job Name:

Architect/Engineer Approval:

Notes:

PIPES MUST BE HELD RIGID UNDER SINK BY CONNECTION FITTINGS, BRACE, ETC.



Product Description:

VACUUM BREAKER UNIT-3/4" NPT

Drawn:

DHL

Approved

JHB

Checked

JRM

Scale:

1 : 4

Date:

10/01/09