



**T&S BRASS AND BRONZE WORKS, INC.**  
 2 SADDLEBACK COVE / P.O. BOX 1088 / TRAVELERS REST, SC 29690  
 PHONE 800-476-4103 FAX 864-834-3518



Model No.

B-0165

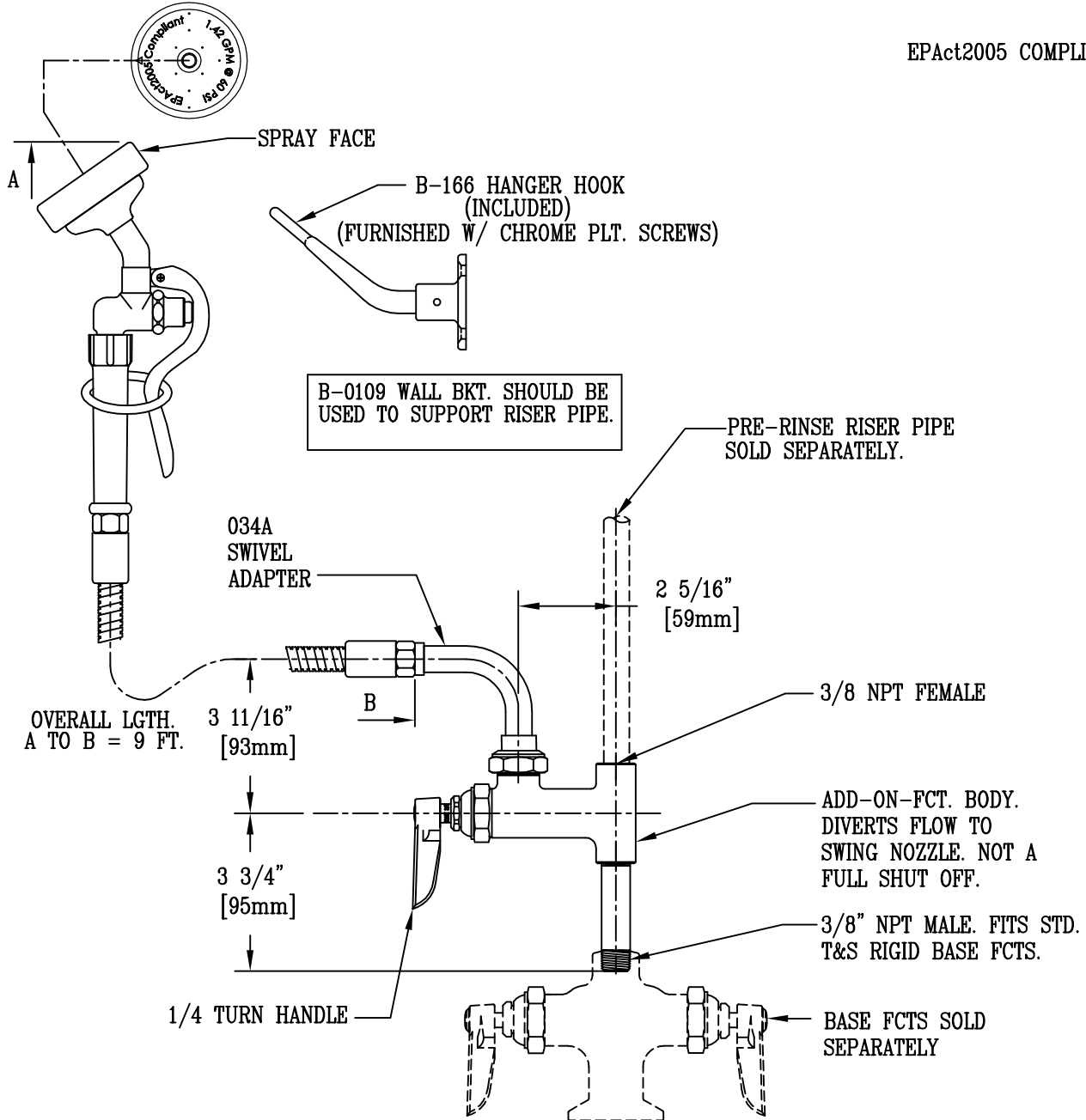
Item No.:

Job Name:

Architect/Engineer Approval:

Notes:

EPA Act 2005 COMPLIANT



Product Description:  
 WASH-DOWN HOSE UNIT

Drawn:

RJK

Checked

JRM

Scale:

1:4

Approved

JHB

Date:

01-04-06



# T&S BRASS AND BRONZE WORKS, INC.

2 Saddleback Cove / P.O. Box 1088  
Travelers Rest, SC 29690

Model No.

**B-0165-C35-68H**

Item No.

Travelers Rest, SC: 800-476-4103 • Simi Valley, CA: 800-423-0150 • Fax: 864-834-3518 • www.tsbrass.com

This Space for Architect/Engineer Approval

Job Name \_\_\_\_\_ Date \_\_\_\_\_

Model Specified \_\_\_\_\_ Quantity \_\_\_\_\_

Customer/Wholesaler \_\_\_\_\_

Contractor \_\_\_\_\_

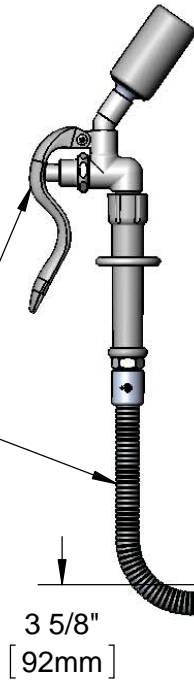
Architect/Engineer \_\_\_\_\_



B-0107-C35  
0.65 GPM  
Low Flow Angled  
Spray Valve

68" Flexible Stainless  
Steel Hose

1/4 Turn Eterna  
Cartridge &  
4-Arm Handle

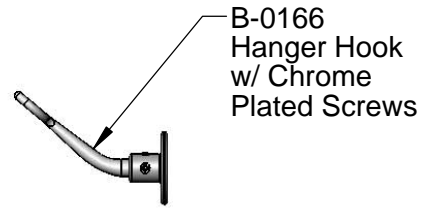


3 5/8"  
[92mm]

034A  
Swivel Adapter

2 5/16"  
[59mm]

3 5/8"  
[92mm]



B-0166  
Hanger Hook  
w/ Chrome  
Plated Screws

Pre-Rinse Riser  
(Sold Separately)

3/8" NPT  
Female Outlet

3/8" NPT  
Male Inlet

4 15/16"  
[125mm]

### Notes:

1. The Add-On Faucet is an Addition to Pre-Rinse Units and is Installed in Outlets of Base Mixing Faucets of Units Before Fitting Riser Pipes
2. 4-Arm Handle Controls Water On-Off Thru Washdown Hose Only. Pressure is Always "On" in the Riser Pipe (Controlled by Base Mixing Faucet)

### Product Specifications:

Washdown Hose Unit, 1/4 Turn Eterna Cartridge, 4-Arm Handle, 68" Flexible Stainless Steel Hose, 0.65 GPM Low Flow Angled Spray Valve & Hanger Hook

### Product Compliance:

ASME A112.18.1 / CSA B125.1  
NSF 61 - Section 9  
NSF 372 (Low Lead Content)  
EPA Act 2005 (PRSV)



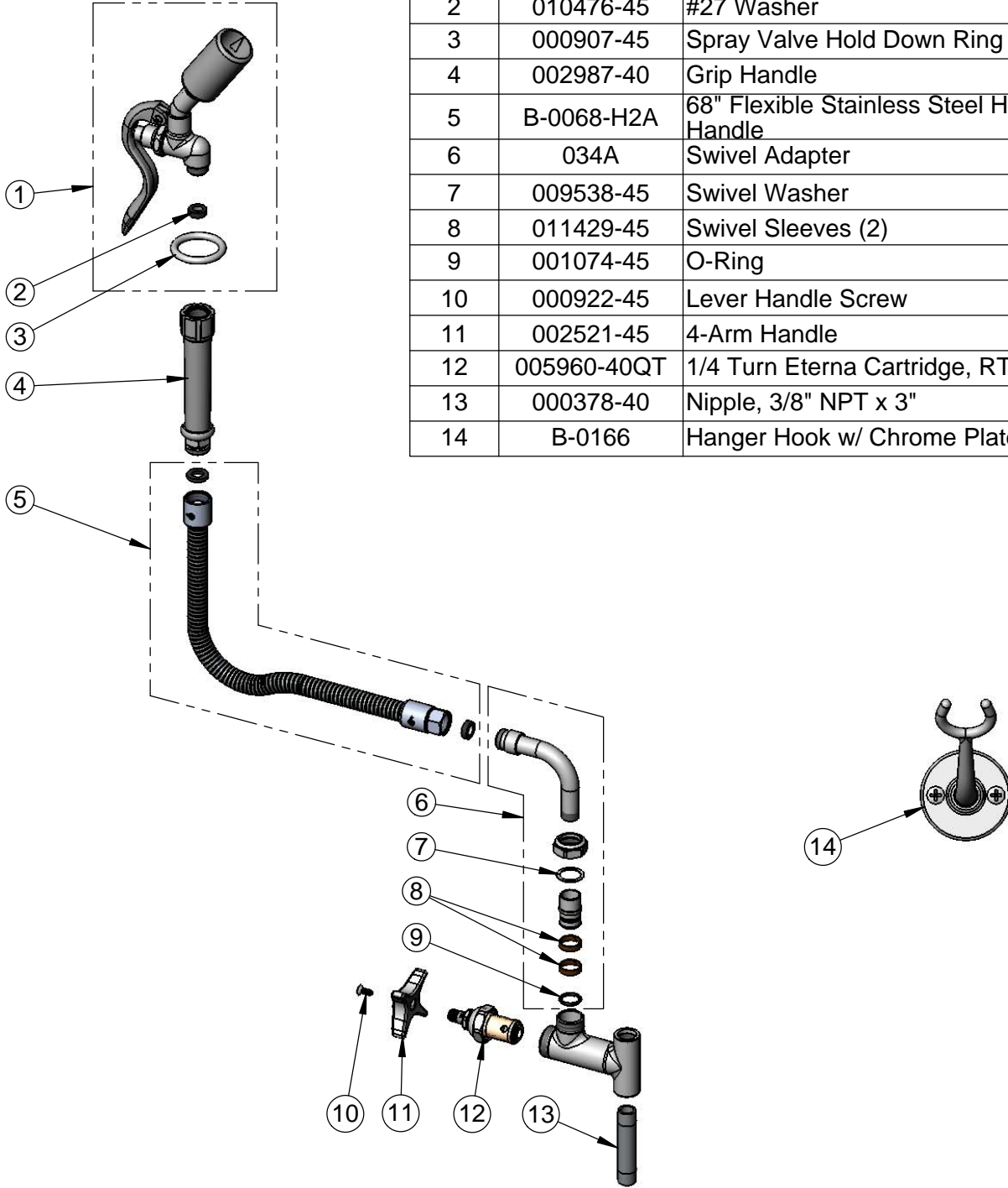
**T&S BRASS AND BRONZE WORKS, INC.**  
 2 Saddleback Cove / P.O. Box 1088  
 Travelers Rest, SC 29690

Model No.  
**B-0165-C35-68H**

Item No.

Travelers Rest, SC: 800-476-4103 • Simi Valley, CA: 800-423-0150 • Fax: 864-834-3518 • www.tsbrass.com

ITEM NO.	SALES NO.	DESCRIPTION
1	B-0107-C35	0.65 GPM Low Flow Angled Spray Valve
2	010476-45	#27 Washer
3	000907-45	Spray Valve Hold Down Ring
4	002987-40	Grip Handle
5	B-0068-H2A	68" Flexible Stainless Steel Hose - Less Handle
6	034A	Swivel Adapter
7	009538-45	Swivel Washer
8	011429-45	Swivel Sleeves (2)
9	001074-45	O-Ring
10	000922-45	Lever Handle Screw
11	002521-45	4-Arm Handle
12	005960-40QT	1/4 Turn Eterna Cartridge, RTC
13	000378-40	Nipple, 3/8" NPT x 3"
14	B-0166	Hanger Hook w/ Chrome Plated Screws



**Product Specifications:**  
 Washdown Hose Unit, 1/4 Turn Eterna Cartridge, 4-Arm Handle,  
 68" Flexible Stainless Steel Hose, 0.65 GPM Low Flow Angled Spray  
 Valve & Hanger Hook

**Product Compliance:**  
 ASME A112.18.1 / CSA B125.1  
 NSF 61 - Section 9  
 NSF 372 (Low Lead Content)  
 EPA Act 2005 (PRSV)



**T&S BRASS AND BRONZE WORKS, INC.**  
 2 Saddleback Cove / P.O. Box 1088  
 Travelers Rest, SC 29690

Model No.  
**B-0165-C35-GGB**

Item No.

Travelers Rest, SC: 800-476-4103 • Simi Valley, CA: 800-423-0150 • Fax: 864-834-3518 • www.tsbrass.com

This Space for Architect/Engineer Approval

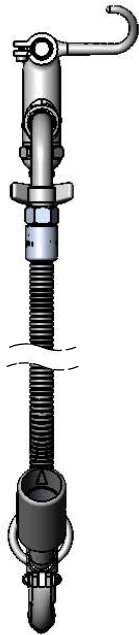
Job Name \_\_\_\_\_ Date \_\_\_\_\_

Model Specified \_\_\_\_\_ Quantity \_\_\_\_\_

Customer/Wholesaler \_\_\_\_\_

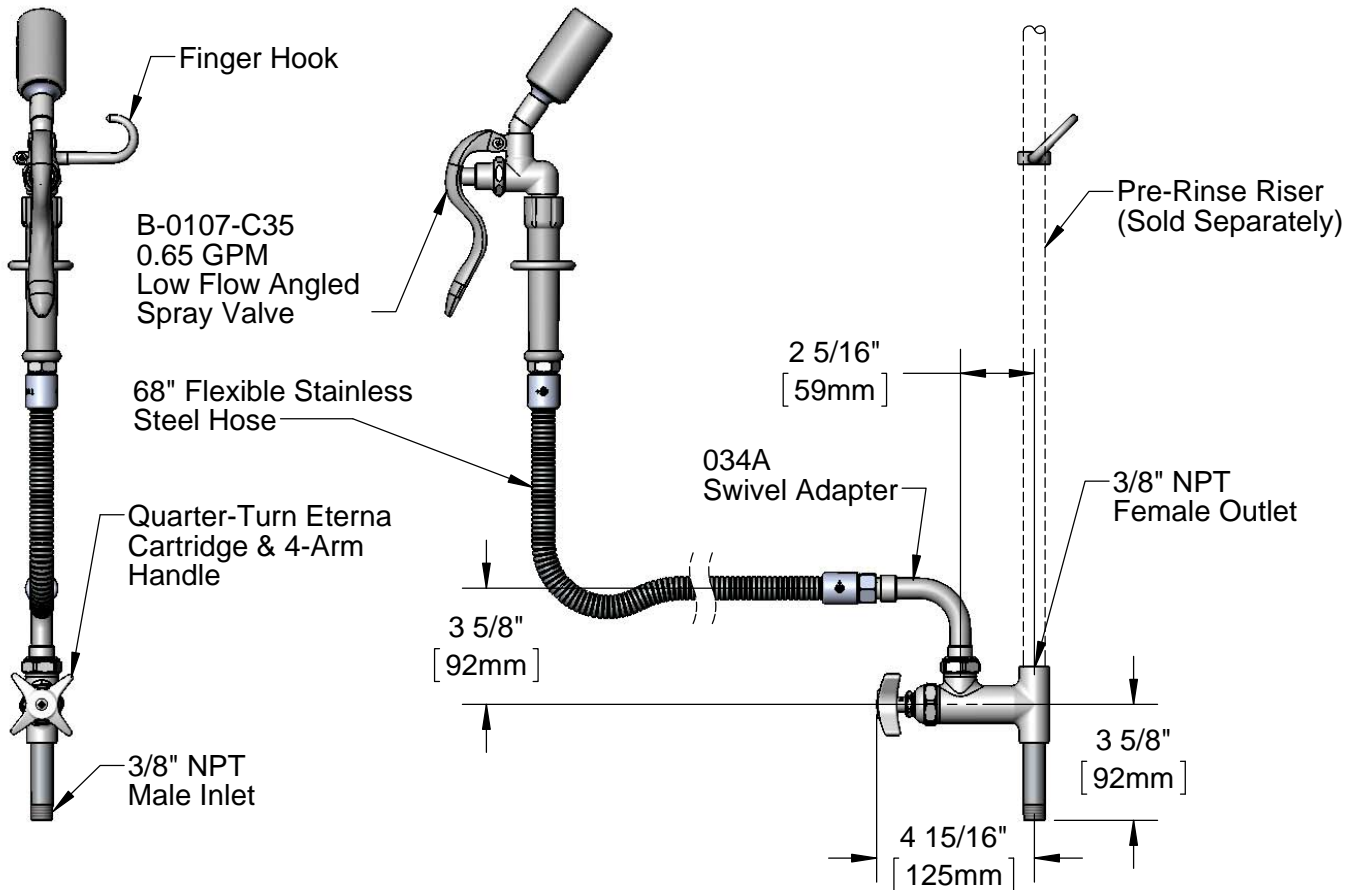
Contractor \_\_\_\_\_

Architect/Engineer \_\_\_\_\_



Notes:

1. The Add-On Faucet is an Addition to Pre-Rinse Units and is Installed in Outlets of Base Mixing Faucets of Units Before Fitting Riser Pipes
2. 4-Arm Handle Controls Water On-Off Thru Washdown Hose Only. Pressure is Always "On" in the Riser Pipe (Controlled by Base Mixing Faucet)



Product Specifications:  
 Washdown Hose Unit, Quarter-Turn Eterna Cartridge, 4-Arm Handle, 68" Flexible Stainless Steel Hose, 0.65 GPM Low Flow Angled Spray Valve & Finger Hook

Product Compliance:  
 NSF 61 - Section 9  
 NSF 372 (Low Lead Content)  
 EPA 2005 (PRSV)



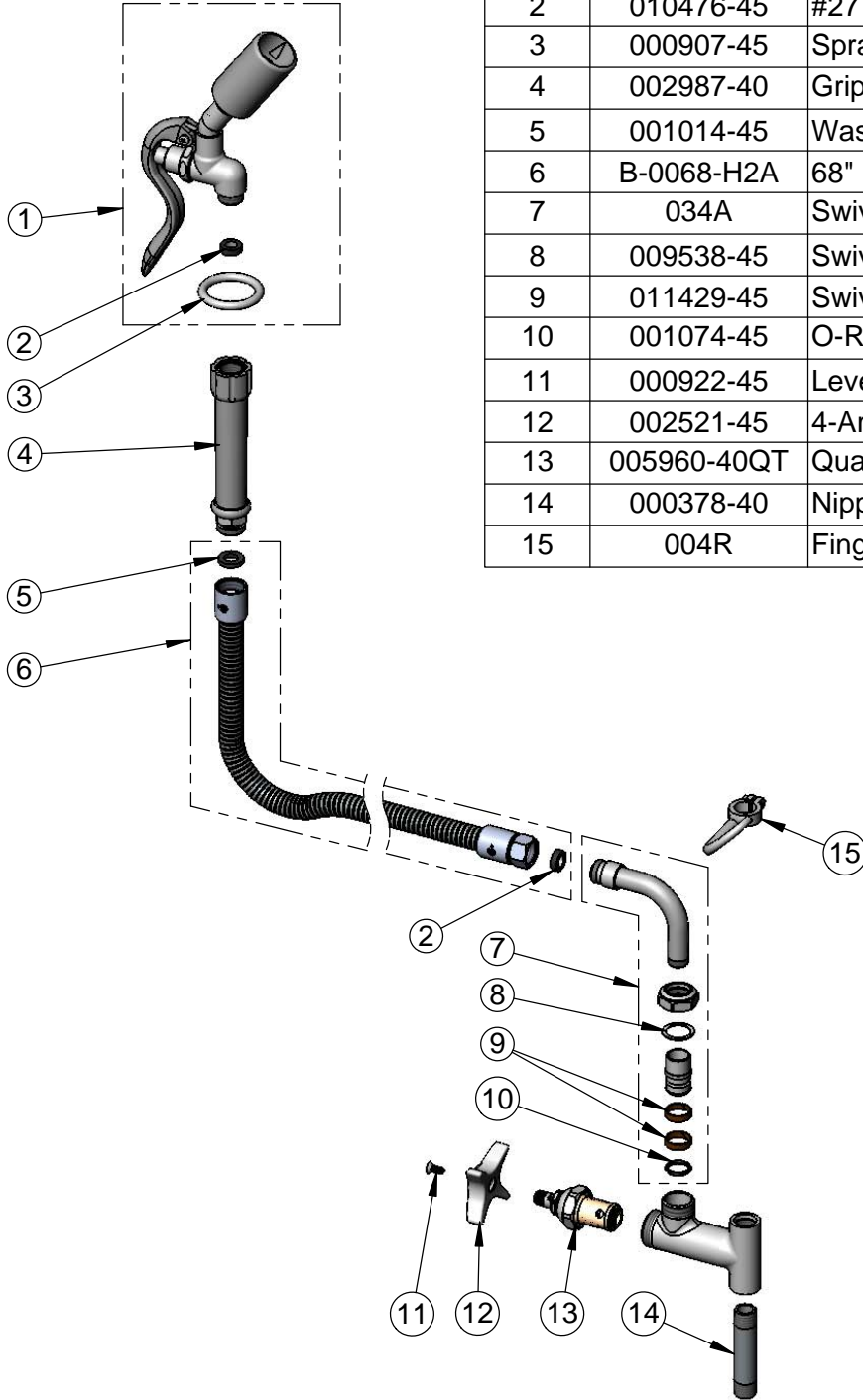
**T&S BRASS AND BRONZE WORKS, INC.**  
 2 Saddleback Cove / P.O. Box 1088  
 Travelers Rest, SC 29690

Model No.  
**B-0165-C35-GGB**

Item No.

Travelers Rest, SC: 800-476-4103 • Simi Valley, CA: 800-423-0150 • Fax: 864-834-3518 • www.tsbrass.com

ITEM NO.	SALES NO.	DESCRIPTION
1	B-0107-C35	0.65 GPM Low Flow Angled Spray Valve
2	010476-45	#27 Washer
3	000907-45	Spray Valve Hold Down Ring
4	002987-40	Grip Handle
5	001014-45	Washer, B-0100 Hose Barrel
6	B-0068-H2A	68" Flexible Stainless Steel Hose, Less Handle
7	034A	Swivel Adapter
8	009538-45	Swivel Washer
9	011429-45	Swivel Sleeves (2)
10	001074-45	O-Ring
11	000922-45	Lever Handle Screw
12	002521-45	4-Arm Handle
13	005960-40QT	Quarter-Turn Eterna Cartridge, RTC
14	000378-40	Nipple, 3/8" NPT x 3"
15	004R	Finger Hook



Product Specifications:  
 Washdown Hose Unit, Quarter-Turn Eterna Cartridge, 4-Arm Handle,  
 68" Flexible Stainless Steel Hose, 0.65 GPM Low Flow Angled Spray  
 Valve & Finger Hook

Product Compliance:  
 NSF 61 - Section 9  
 NSF 372 (Low Lead Content)  
 EPAAct 2005 (PRSV)