



T&S BRASS AND BRONZE WORKS, INC.

2 SADDLEBACK COVE / P.O. BOX 1088 / TRAVELERS REST, SC 29690

PHONE 800-476-4103

FAX 864-834-3518



REG.#A2601
ISO #9001

Model No.

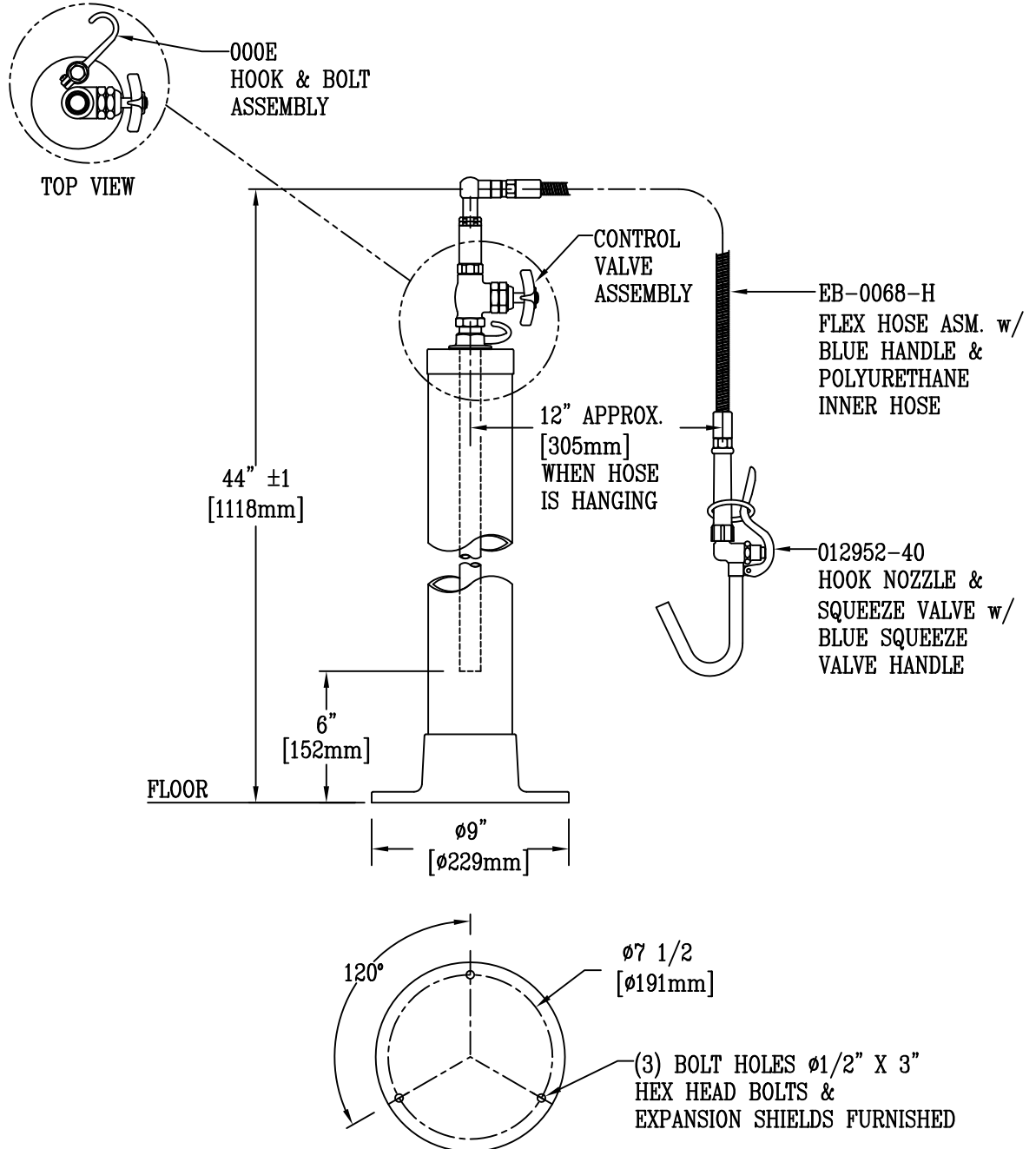
B-0195

Item No.:

Job Name:

Architect/Engineer Approval:

Notes:



NOTES:

1. ASSEMBLY CONNECTS TO ø1/2" PIPE NIPPLES ROUGHED IN FROM FLOOR ON 2" CENTERS TO A HEIGHT OF 6".
2. STANCHION IS BRASS WITH POLISHED CHROME PLATED FINISH.
3. STANDARD HOSE LENGTH=68"
(MODIFIED LENGTHS AVAILABLE UPON REQUEST)

Product Description: KETTLE KADDY ASSEMBLY: POT & KETTLE FILLER STANCHION	Drawn: DHL	Checked DMH	Scale: 1:8
	Approved JHB		Date: 09/02/11



T&S BRASS AND BRONZE WORKS, INC.

2 SADDLEBACK COVE / P.O. BOX 1088 / TRAVELERS REST, SC 29690

PHONE 800-476-4103

FAX 864-834-3518



REG.#A2601
ISO #9001

Model No.

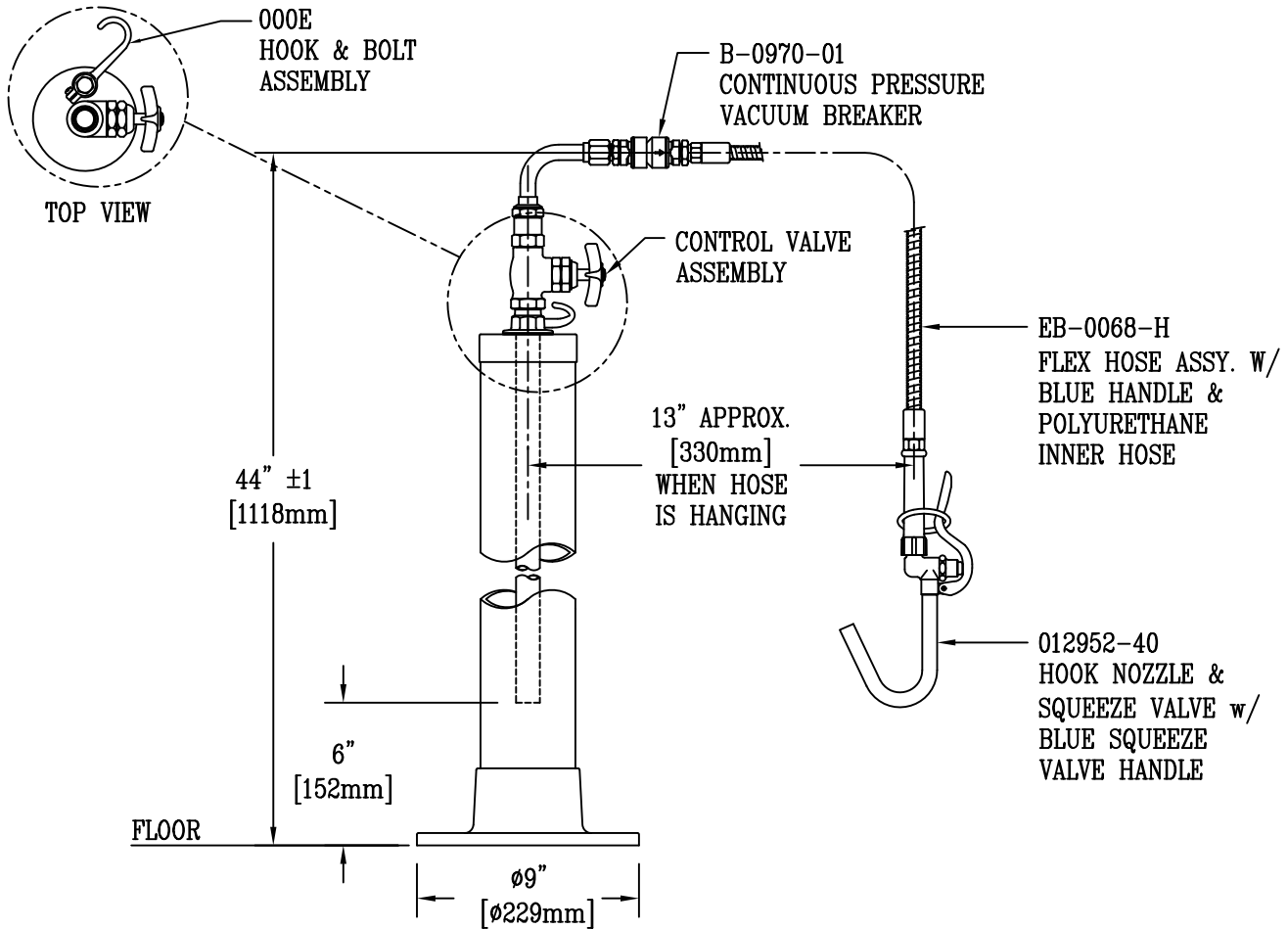
B-0196

Item No.:

Job Name:

Architect/Engineer Approval:

Notes:



NOTES:

1. ASSEMBLY CONNECTS TO $\phi 1/2$ " PIPE NIPPLES ROUGHED IN FROM FLOOR ON 2" CENTERS TO A HEIGHT OF 6".
2. STANCHION IS BRASS WITH POLISHED CHROME PLATED FINISH.
3. STANDARD HOSE LENGTH=68"
(MODIFIED LENGTHS AVAILABLE UPON REQUEST)

Product Description:
 KETTLE KADDY ASSEMBLY:
 POT AND KETTLE FILLER STANCHION w/
 CONTINUOUS PRESSURE VACUUM BREAKER

Drawn: DHL	Checked DMH	Scale: 1:8
Approved JHB	Date: 09/02/11	