



# T&S BRASS AND BRONZE WORKS, INC.

2 Saddleback Cove / P.O. Box 1088  
Travelers Rest, SC 29690

Model No.

**B-0109-01**

Item No.

Travelers Rest, SC: 800-476-4103 • Simi Valley, CA: 800-423-0150 • Fax: 864-834-3518 • www.tsbrass.com

This Space for Architect/Engineer Approval

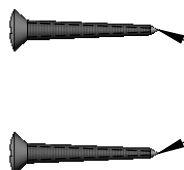
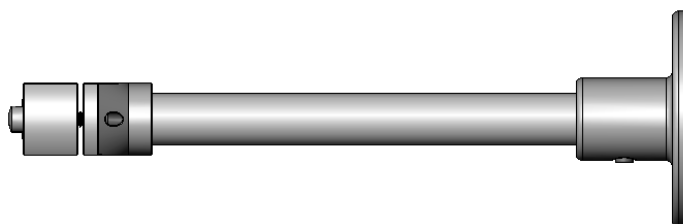
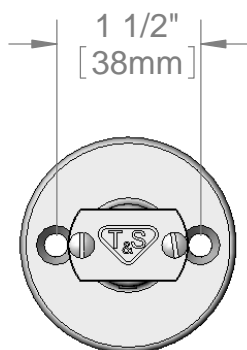
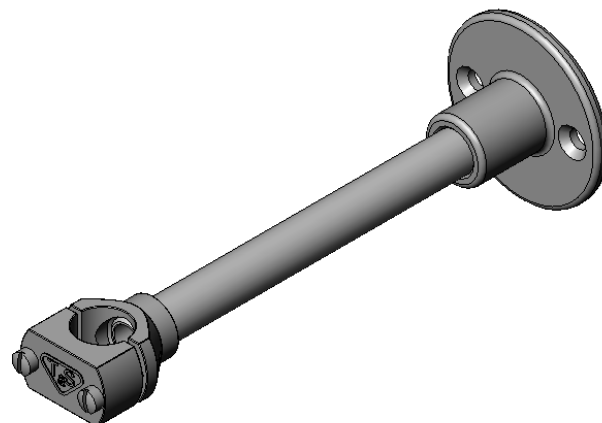
Job Name \_\_\_\_\_ Date \_\_\_\_\_

Model Specified \_\_\_\_\_ Quantity \_\_\_\_\_

Customer/Wholesaler \_\_\_\_\_

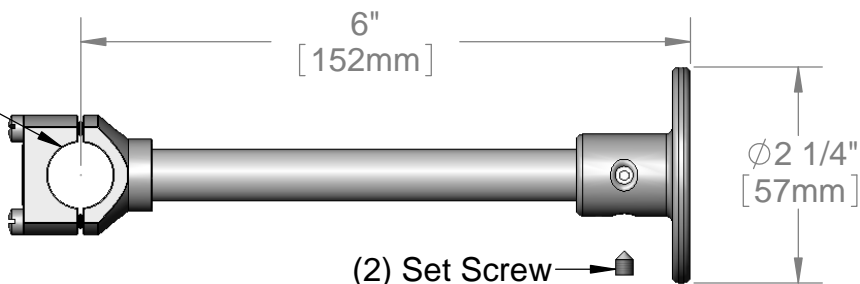
Contractor \_\_\_\_\_

Architect/Engineer \_\_\_\_\_



Chrome Plated Brass Wood Screws  
for Wall Mounting (Included)

Fits 3/8" Pipe



## Product Specifications:

6" Wall Bracket Assembly for 3/8" Pipe  
w/ Mounting Hardware

Drawn

JRM

Checked

KJG

Approved

JHB

Scale:

1:2

Date:

06/02/14



# T&S BRASS AND BRONZE WORKS, INC.

2 Saddleback Cove / P.O. Box 1088  
Travelers Rest, SC 29690

Model No.

**B-0109-01VR**

Item No.

Travelers Rest, SC: 800-476-4103 • Simi Valley, CA: 800-423-0150 • Fax: 864-834-3518 • www.tsbrass.com

This Space for Architect/Engineer Approval

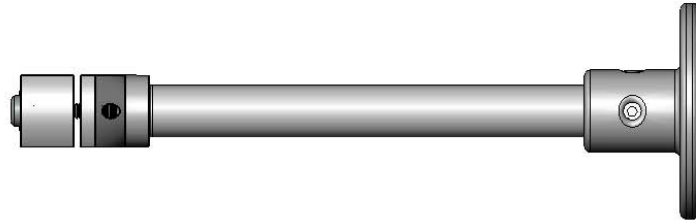
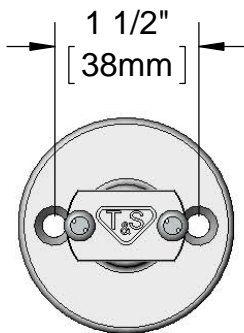
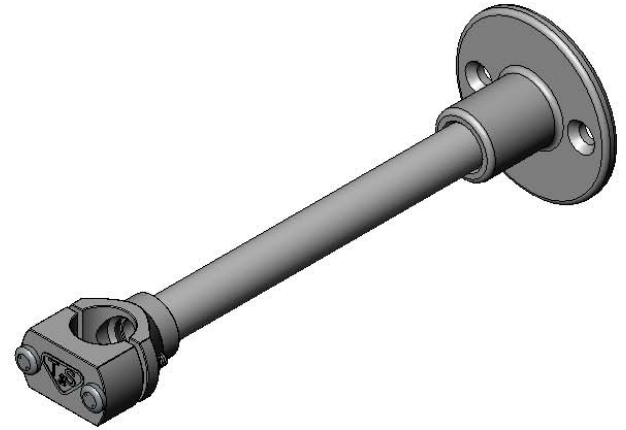
Job Name \_\_\_\_\_ Date \_\_\_\_\_

Model Specified \_\_\_\_\_ Quantity \_\_\_\_\_

Customer/Wholesaler \_\_\_\_\_

Contractor \_\_\_\_\_

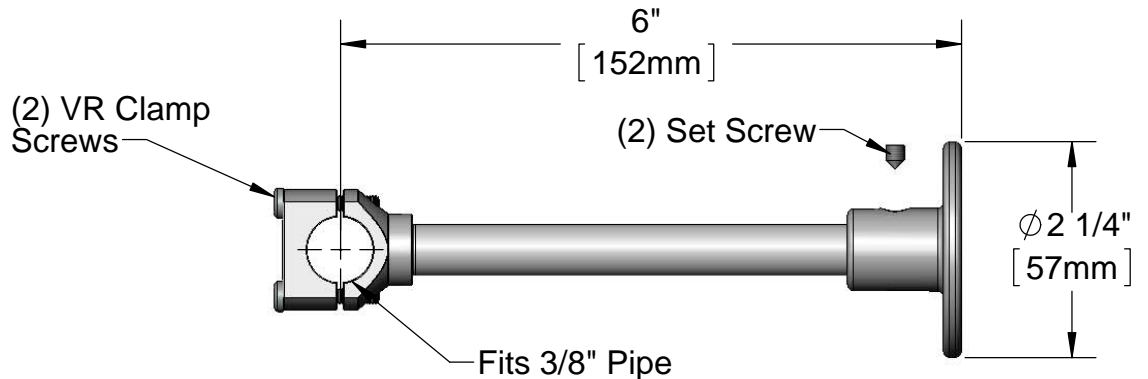
Architect/Engineer \_\_\_\_\_



#8 Spanner Bit (Included)



Chrome Plated Brass VR Wood Screws  
for Wall Mounting (Included)



## Product Specifications:

6" Wall Bracket Assembly for 3/8" Pipe  
w/ Vandal Resistant Mounting Hardware

Drawn

JRM

Checked

KJG

Approved

JHB

Scale:

1:2

Date:

06/02/14