



**T&S BRASS AND BRONZE WORKS, INC.**  
 2 Saddleback Cove / P.O. Box 1088  
 Travelers Rest, SC 29690

Model No.  
**B-0102-C**

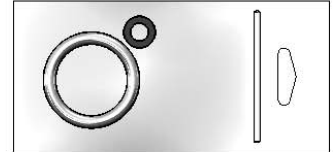
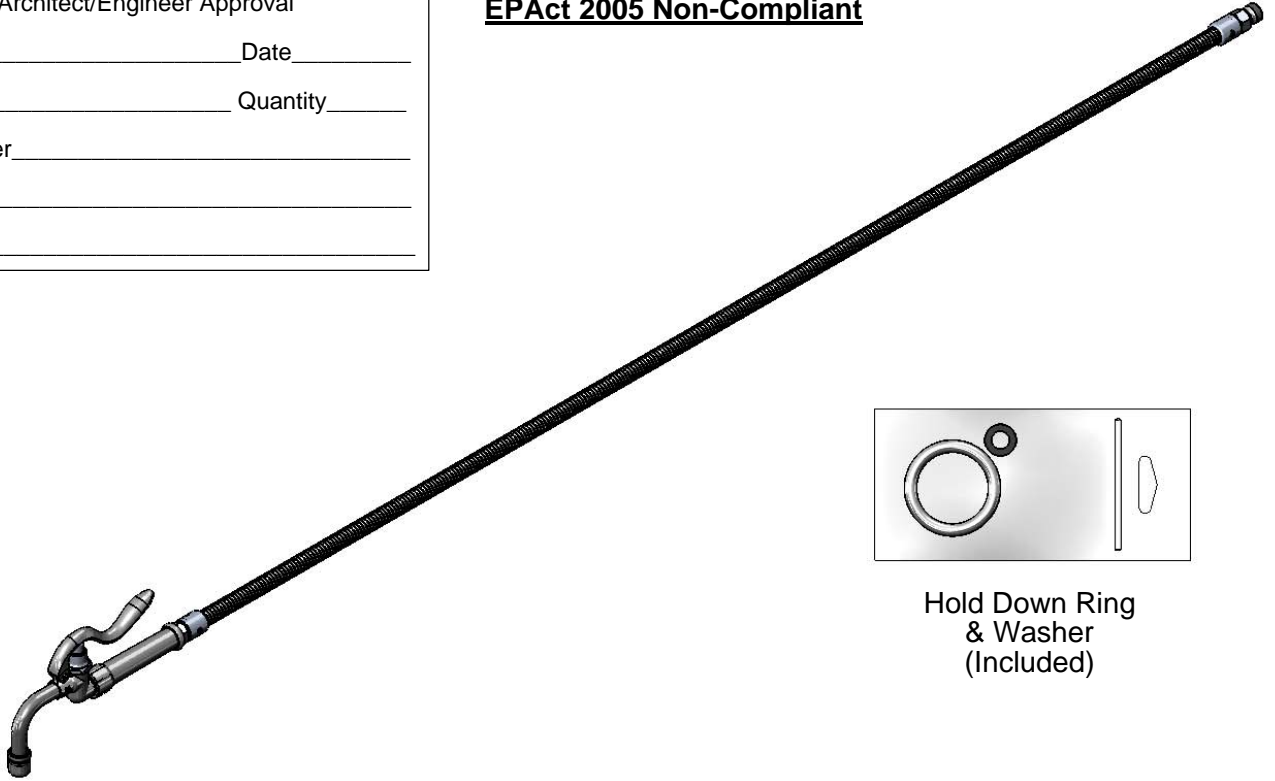
Item No.

Travelers Rest, SC: 800-476-4103 • Simi Valley, CA: 800-423-0150 • Fax: 864-834-3518 • www.tsbrass.com

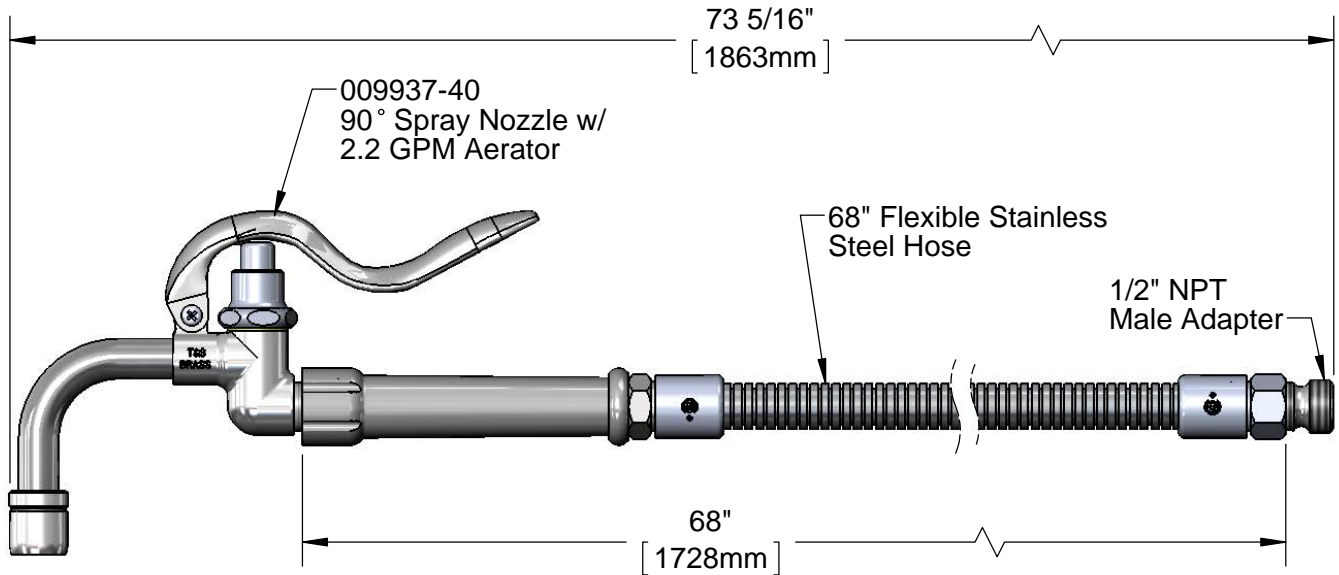
This Space for Architect/Engineer Approval

Job Name \_\_\_\_\_ Date \_\_\_\_\_  
 Model Specified \_\_\_\_\_ Quantity \_\_\_\_\_  
 Customer/Wholesaler \_\_\_\_\_  
 Contractor \_\_\_\_\_  
 Architect/Engineer \_\_\_\_\_

**EPAct 2005 Non-Compliant**



Hold Down Ring  
 & Washer  
 (Included)



Product Specifications:  
 Pot & Glass Filler w/ 90° Spray Nozzle, 2.2 GPM Aerator,  
 & 68" Flexible Stainless Steel Hose w/ Adapter

Drawn <b>KJG</b>	Checked <b>DMH</b>	Approved <b>JHB</b>
Scale: <b>1:3</b>		Date: <b>01/28/14</b>



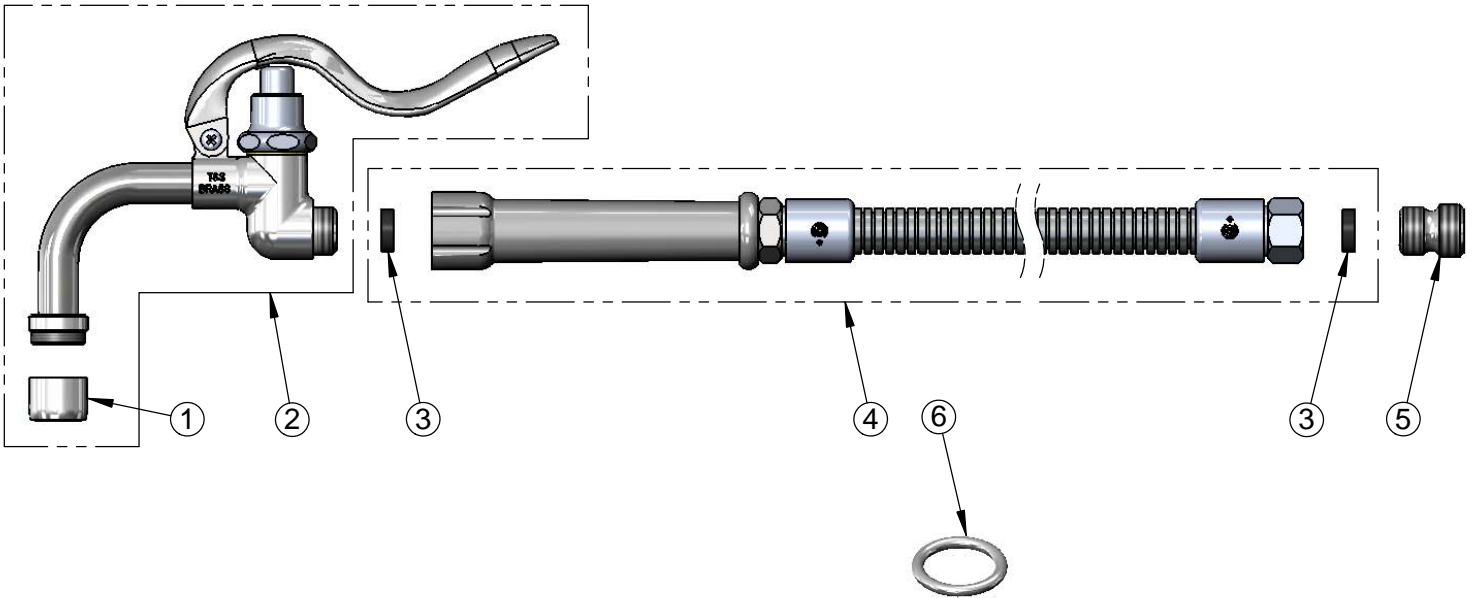
**T&S BRASS AND BRONZE WORKS, INC.**  
 2 Saddleback Cove / P.O. Box 1088  
 Travelers Rest, SC 29690

Model No.  
**B-0102-C**

Item No.

Travelers Rest, SC: 800-476-4103 • Simi Valley, CA: 800-423-0150 • Fax: 864-834-3518 • www.tsbrass.com

ITEM NO.	SALES NO.	DESCRIPTION
1	B-0199-01	2.2 GPM Aerator, 55/64"-27 UN Female
2	009937-40	90° Spray Nozzle w/ 2.2 GPM Aerator
3	010476-45	#27 Washer
4	B-0068-H	68" Flexible Stainless Steel Hose
5	055A	Adapter, 1/2 NPT Male
6	000907-45	Spray Valve Hold Down Ring



Product Specifications:  
 Pot & Glass Filler w/ 90° Spray Nozzle, 2.2 GPM Aerator,  
 & 68" Flexible Stainless Steel Hose w/ Adapter

Drawn <b>KJG</b>	Checked <b>DMH</b>	Approved <b>JHB</b>
Scale: <b>NTS</b>		Date: <b>01/28/14</b>