

# The T&S Commitment To Water Conservation

T&S Brass is relentlessly searching for ways to help you conserve water and save money. With this goal in mind, we have designed **three** areas to control water flow in our **Concealed Widespread Faucets** and four flow control

locations in our **Lavatory Faucets**.

The modified flow control faucets shown below illustrate how you can specify **one option** listed and the requirements for that option.

## CONCEALED WIDESPREAD FAUCETS

### 1 AERATOR Flow Control

- Order faucet "modified with flow control aerator or laminar control device"

### 2 SPINDLE ASSEMBLY Flow Control

- Available with Eterna cartridges
- Order faucet "modified with flow control in spindle assembly"

### 3 CENTER BODY Flow Control

- Available with New Style EASYINSTALL Concealed Widespread Body faucets
- Order faucet "modified with flow control in center body"

Flow Tower Chart	
Flow (GPM)	
0.25	
0.40	
0.70	
0.90	
1.20	
1.40	
2.00	

### 1 AERATOR Flow Control

- Order faucet "modified with flow control aerator or laminar control device"

### 3 SPINDLE ASSEMBLY Flow Control

- Available with Eterna cartridges
- Order faucet "modified with flow control in spindle assembly"

### 4 B-0412-FXX ADAPTER Flow Control

- B-0412-FXX Series rigid to swivel adapter with flow control
- Order faucet "modified with B-0412-FXX adapter with flow control" and specify flow control rate

2



# T&S Plumbing Faucets Water Conservation Models



Our Water Conservation Plumbing faucets use specially designed outlets that control the flow of water to save you significant money and energy costs. Their low-flow capabilities never compromise



performance, and they demonstrate our long-term commitment to water conservation.

Check our website regularly to see our latest list of water-conserving plumbing models.

Model Number
B-0710-WS
B-0712-F05
B-0712-VF05
B-0712-WS
B-0805-F05
B-0805-VF05
B-0805-WS
B-0807-WS
B-0831-F05
B-0831-VF05
B-0831-WS
B-0867-04-WS
B-0871-CR-WS
B-0871-F05
B-0871-VF05
B-0871-WS
B-0890-CR-WS
B-0890-F05
B-0890-VF05
B-0890-WS
B-0892-01-WS
B-0892-CR-WS
B-0892-F05
B-0892-VF05
B-0892-WS

Model Number
B-2710-VF05
B-2710-WS
B-2711-VF05
B-2711-WS
B-2730-WS
B-2850-F05
B-2850-VF05
B-2850-WS
B-2855-WS
B-2862-WS
B-2866-05-WS
B-2866-F05
B-2866-VF05
B-2867-04-WS
B-2990-F05
B-2990-VF05
B-2990-WH4-WS
B-2990-WS
B-2991-WS

### SUFFIX GUIDE

-F05	0.5 GPM	Non-aerated spray device
-VF05	0.5 GPM	Vandal-resistant non-aerated spray device
-WS	1.5 GPM	Water-conserving aerator

3

# Low Flow Outlets For Water Conservation Plumbing Models



Low flow aerators and outlets are an affordable way to reduce your water consumption and save energy and money.



### Aerator with Flow Control

- Non-splash aerator with flow control



Series 1	Series 2	Series 3	Series 4	Series 5
<ul style="list-style-type: none"> <li>55/64"-27 UN female aerator threads</li> <li>Fits all swing nozzles and 131X, 133X gooseneck</li> <li>-WS models are water-saving aerators</li> </ul>	<ul style="list-style-type: none"> <li>3/8" NPSM male thread</li> <li>Fits goosenecks</li> <li>-WS models are water-saving aerators</li> </ul>	<ul style="list-style-type: none"> <li>13/16"-27 UN male aerator thread</li> <li>Fits lavatory spouts</li> <li>-WS models are water-saving aerators</li> </ul>	<ul style="list-style-type: none"> <li>15/16"-27 UN male thread</li> <li>Fits single lever line</li> <li>-WS models are water-saving aerators</li> </ul>	<ul style="list-style-type: none"> <li>13/16"-24 UN female thread</li> <li>Fits other manufacturer's faucets</li> <li>Includes adapter and washer with aerator</li> </ul>

Refer to Aerator Flow Chart to add Suffix Numbers

### Vandal Resistant Aerator with Flow Control

- Non-splash, vandal resistant aerator with flow control
- Tool to attach and remove aerator



Refer to Aerator Flow Chart to add Suffix Numbers

### NEW! Non-Splash Aerator 1.5 GPM

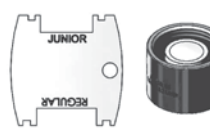
- Non-splash aerator with flow control



B-0199-01F-XX	B-0199-02F-XX	B-0199-03F-XX		
B-0199-06F-XX	B-0199-07F-XX	B-0199-08F-XX		
B-0199-01-WS (1.5 GPM)	B-0199-02-WS (1.5 GPM)	B-0199-03-WS (1.5 GPM)	B-0199-04-WS (1.5 GPM)	B-0199-05-WS (1.5 GPM)

### NEW! Vandal Resistant Aerator 1.5 GPM

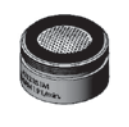
- Non-splash, vandal resistant aerator with flow control
- Tool to attach and remove aerator



B-0199-06-WS (1.5 GPM)	B-0199-07-WS (1.5 GPM)	B-0199-08-WS (1.5 GPM)	B-0199-09-WS (1.5 GPM)	B-0199-10-WS (1.5 GPM)
------------------------	------------------------	------------------------	------------------------	------------------------

### Non-Aerated Spray Device

- Non-splash non-aerated spray device



B-0199-01-N05 (0.5 GPM)	B-0199-02-N05 (0.5 GPM)	B-0199-03-N05 (0.5 GPM)	B-0199-04-N05 (0.5 GPM)	B-0199-05-N05 (0.5 GPM)
-------------------------	-------------------------	-------------------------	-------------------------	-------------------------

### Vandal Resistant Non-Aerated Spray Device

- Non-splash, vandal resistant non-aerated spray device
- Tool to attach and remove outlet



B-0199-06-N05 (0.5 GPM)	B-0199-07-N05 (0.5 GPM)	B-0199-08-N05 (0.5 GPM)	B-0199-09-N05 (0.5 GPM)	B-0199-10-N05 (0.5 GPM)
-------------------------	-------------------------	-------------------------	-------------------------	-------------------------

4

## Laminar Flow Outlets For Water Conservation Plumbing Models



**NEW!**  
Check out our new non-splash, non-aerated laminar flow devices!

	Series 1	Series 3	Series 4	
<b>Laminar Flow Regulator</b>	<ul style="list-style-type: none"> <li>55/64"-27 UN female aerator threads</li> <li>Fits all swing nozzles, 131X, 133X gooseneck</li> </ul>	<ul style="list-style-type: none"> <li>13/16"-27 UN male aerator thread</li> <li>Fits lavatory spouts</li> </ul>	<ul style="list-style-type: none"> <li>15/16"-27 UN male thread</li> <li>Fits single lever line</li> </ul>	
	<b>B-0199-21</b> (2.2 GPM)  <b>B-0199-29</b> (1.5 GPM)	<b>B-0199-26</b> (2.2 GPM)	<b>B-0199-25</b> (2.2 GPM)	
<b>NEW! Vandal Resistant Laminar Flow</b>	<ul style="list-style-type: none"> <li>Same as B-0199-21 except is vandal resistant with key</li> <li>-VR - female thread</li> <li>-VRF - female thread</li> <li>-VRM - male thread</li> </ul>	<b>B-0199-29-VR</b> (1.5 GPM)  <b>B-0199-21-VRF</b> (2.2 GPM)  <b>B-0199-21-VRM</b> (2.2 GPM)	<b>B-0199-28</b> (2.2 GPM)	<b>B-0199-27</b> (2.2 GPM)



### B-0199-23 Self-Closing Water Saver Aerator

- 55/64"-27 UN female inlet
- Provides hands free instant water shut off for any faucet
- Move rod to side to open water flow / release to shut off
- ADA compliant
- 4" (102 mm) rod



Aerator Flow Chart		
Flow (GPM)	Suffix	Color Code
0.25	F03	No color
0.40	F05	Brown
0.70	F07	Green
0.90	F10	Grey
1.20	F12	Orange
1.40	F15	Purple
2.00	F20	Yellow

Flow Tower Chart	
Model No.	Flow (GPM)
B-0198-F03	0.25
B-0198-F05	0.40
B-0198-F07	0.70
B-0198-F10	0.90
B-0198-F12	1.20
B-0198-F15	1.40
B-0198-F20	2.00

**Note:**  
Painted mark on each flow control within the assembly indicates flow of unit.

GPM ± 10%  
**To order:**  
Select flow desired, then add suffix to model number.  
For ex.: B-0199-02**F15** for 1.40 GPM

**For Serrated Hose End**  
**To order:**  
Select flow desired, then add suffix to model number.

Ex.: B-0198-**F03** for 0.25 GPM

## Definitions and Use T&S Water Conservation Products



**Aerator Outlets**  
Faucet aerators introduce air into the water stream to produce a larger white stream soft to the touch and non-splashing.



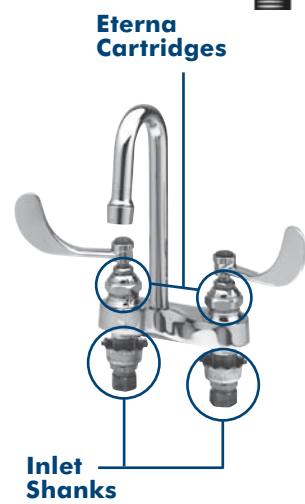
**Laminar Flow Outlets**  
Laminar flow (laminar stream) straighteners produce a non-aerated water stream. Ideal for high flow applications or healthcare facilities (no mix water/air). Laminar spout-end devices deliver a crystal clear and non-splashing stream.



**Non-Aerated Spray Outlets**  
When the flow rate is too low to produce an aerated or laminar stream, a spray device is used to produce a miniature shower pattern to provide full coverage of the hands during washing. Sprays are recommended for use in public lavatories.



**Plain End Outlets with Flow Towers**  
Plain-end nozzles are unthreaded at the outlet area to prevent the usage of aerators or other screw-on devices, so the maximum flow rate permissible by code or job specification must be controlled by other means. T&S Brass recommends that one flow tower (available in various flow rates) be installed in the tempered area of the faucet (after the cartridges, but before the unthreaded outlet area) to achieve maximum customer satisfaction.



### Multiple Flow Tower Installation and Its Effect On GPM

In some of our water-saving faucets the flow rate restriction is installed inside the Eterna cartridges or inside the inlet shanks. In order to achieve the maximum flow rate it must be split between the flow towers on both hot and cold sides. In some cases, this type of flow rate division could lead to customer dissatisfaction if both cartridges are not opened simultaneously. For the best faucet performance we recommend the user open both hot and cold sides at the same time.

**T&S** RELIABILITY BUILT IN™ [www.tsbrass.com](http://www.tsbrass.com)

2 Saddleback Cove • P.O. Box 1088 • Travelers Rest, SC 29690 • Ph 864.834.4102 • Fax 864.834.3518

800-018048-45 10/10



## The T&S Commitment To Water-Saving Plumbing Faucets



**NEW!**  
Water-Saving Models!

