



T&S BRASS AND BRONZE WORKS, INC.
 2 SADDLEBACK COVE / P.O. BOX 1088 / TRAVELERS REST, SC 29690
 PHONE 800-476-4103 FAX 864-834-3518



Model No.

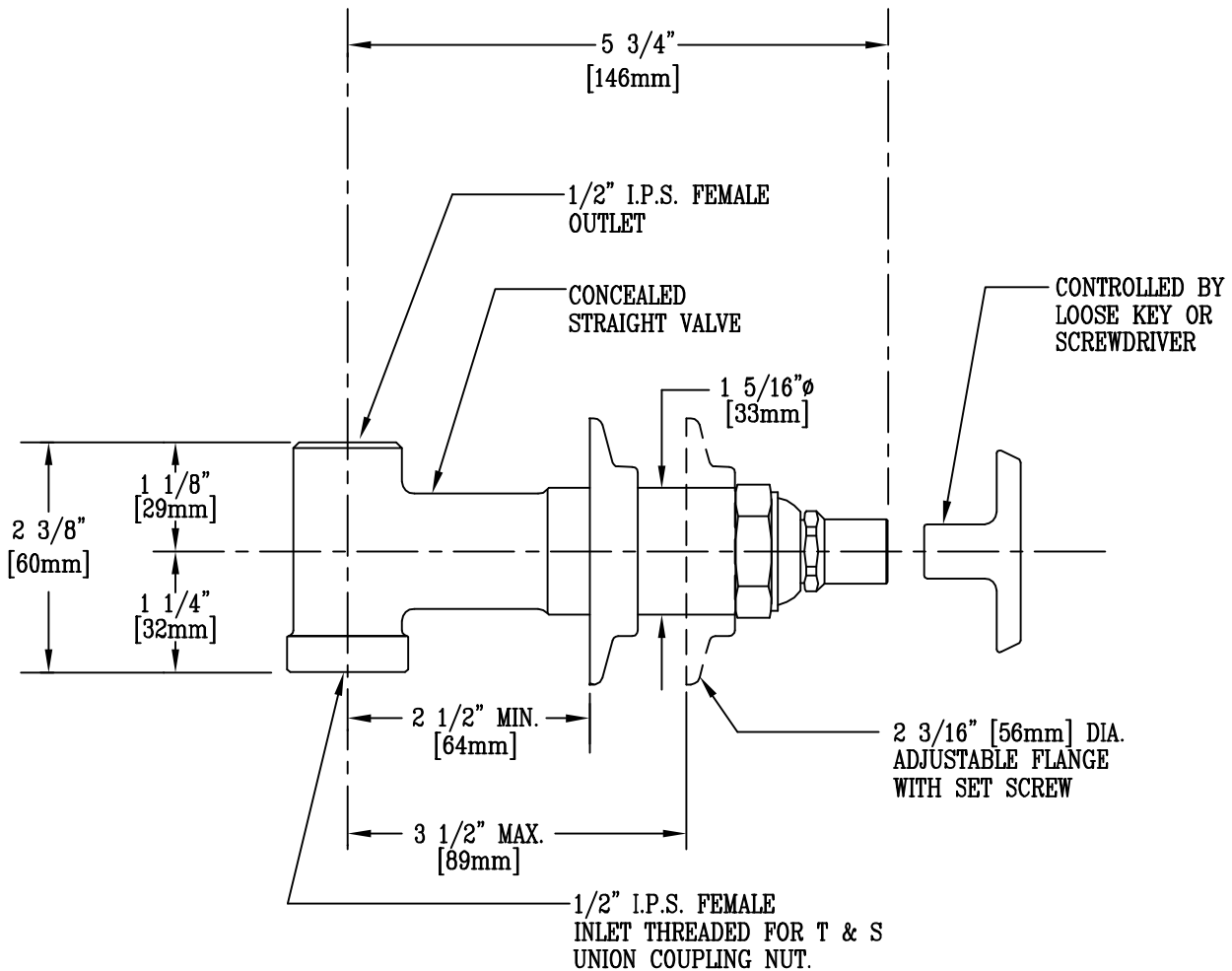
B-1027

Item No.:

Job Name:

Architect/Engineer Approval:

Notes:



Product Description:

CONCEALED STRAIGHT LOOSE KEY VALVE
 WITH 1/2" I.P.S. INLET & OUTLET

Drawn:

WJS

Approved

CA

Checked

SCM

Scale:

6" = 1'

Date:

8/21/95



T&S BRASS AND BRONZE WORKS, INC.

2 SADDLEBACK COVE / P.O. BOX 1088 / TRAVELERS REST, SC 29690

PHONE 800-476-4103

FAX 864- 834-3518



REG.#A2601
ISO #9002

Model No.

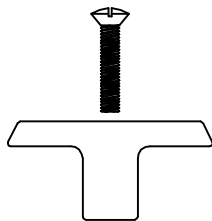
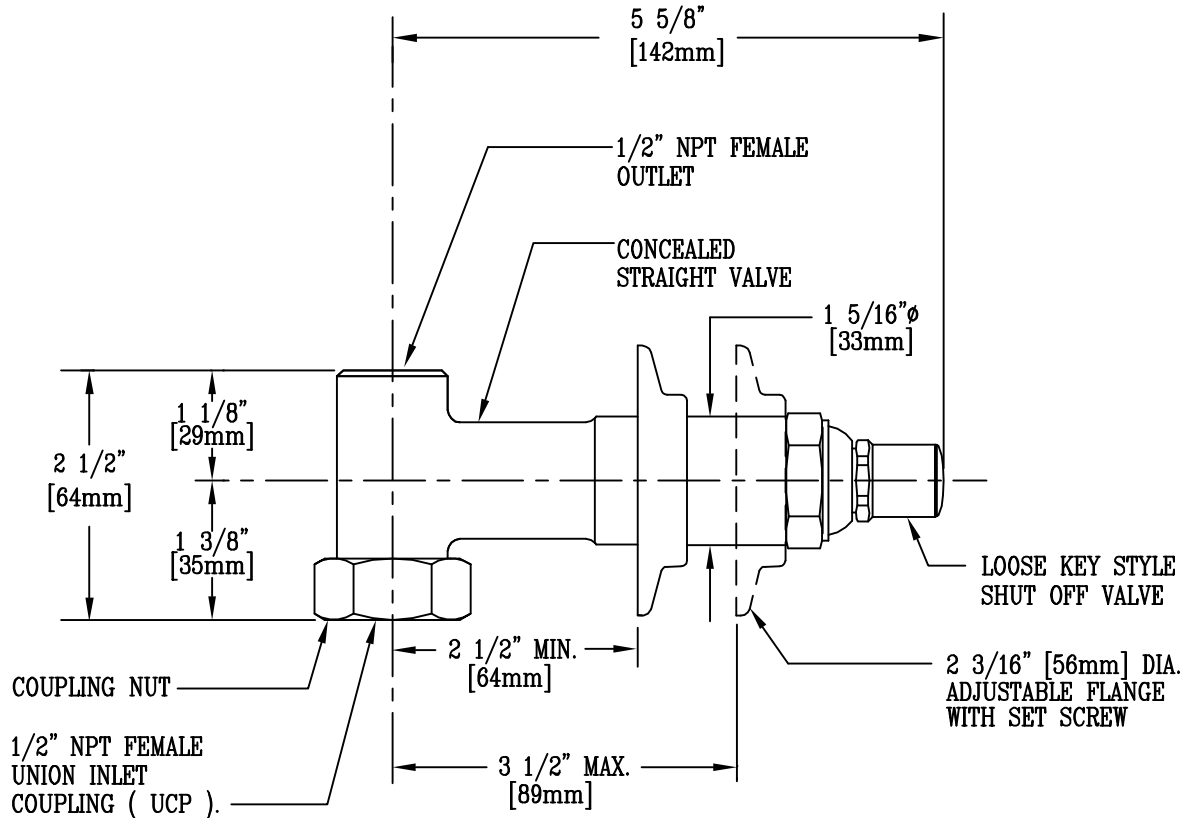
B-1027-UCP

Item No.:

Job Name:

Architect/Engineer Approval:

Notes:



LOOSE KEY AND SCREW SHIPPED LOOSELY

Product Description:

CONCEALED STRAIGHT LOOSE KEY VALVE WITH 1/2" NPT INLET & OUTLET, & 1/2" NPT FEMALE UNION INLET COUPLING

Drawn:

TEH

Checked

LEL

Scale:

6" = 1'

Approved

MVW

Date:

01/02/03