



T&S BRASS AND BRONZE WORKS, INC.

2 Saddleback Cove / P.O. Box 1088
Travelers Rest, SC 29690

Model No.

B-0674-BSTP

Item No.

Travelers Rest, SC: 800-476-4103 • Simi Valley, CA: 800-423-0150 • Fax: 864-834-3518 • www.tsbrass.com



ADA Compliant

This Space for Architect/Engineer Approval

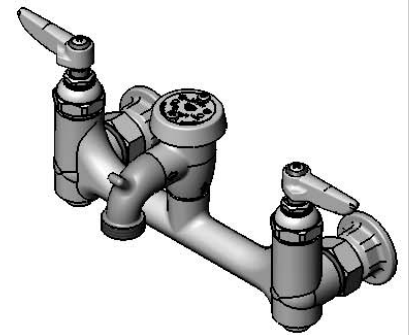
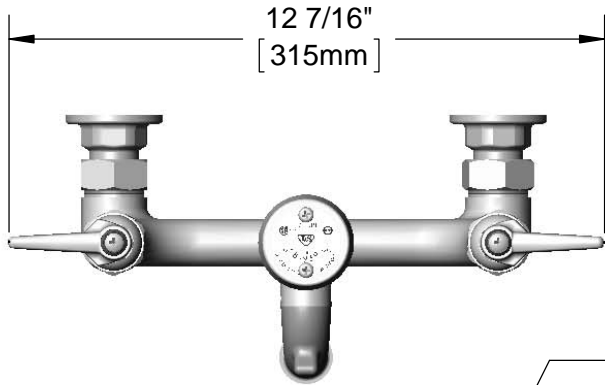
Job Name _____ Date _____

Model Specified _____ Quantity _____

Customer/Wholesaler _____

Contractor _____

Architect/Engineer _____

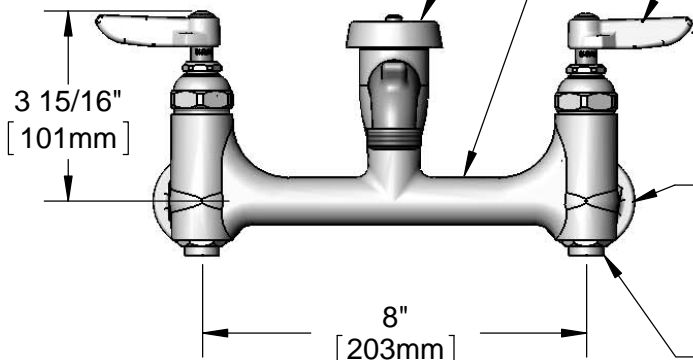


B-0969
1/2" NPT Vacuum
Breaker

Polished Chrome
Finish on Faucet
Body & Spout

Pail Hook Spout
w/ Garden Hose
Male Outlet

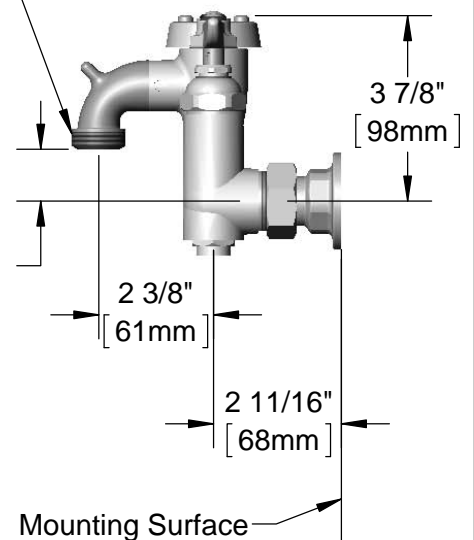
Eterna Cartridges w/
Spring Checks &
Lever Handles w/
Color Coded Indexes



Ø 2" [51mm]
Flanges w/
1/2" NPT
Female Inlets

Built-In Service
Stops

Adjustable From
7 3/4" to 8 1/4"
[197mm to 210mm]



Mounting Surface

Product Specifications:

Wall Mount Service Sink Faucet, Eterna Cartridges w/ Spring Checks, Lever Handles, Pail Hook Spout w/ Garden Hose Male Outlet, Polish Chrome Finish, Built-In Service Stops & 1/2" NPT Female Adjustable Inlets

Product Compliance:

ASME A112.18.1 / CSA B125.1
NSF 61 Exempt (Non-Potable)
ANSI A117.1 (ADA)
ASSE 1001 (VB)



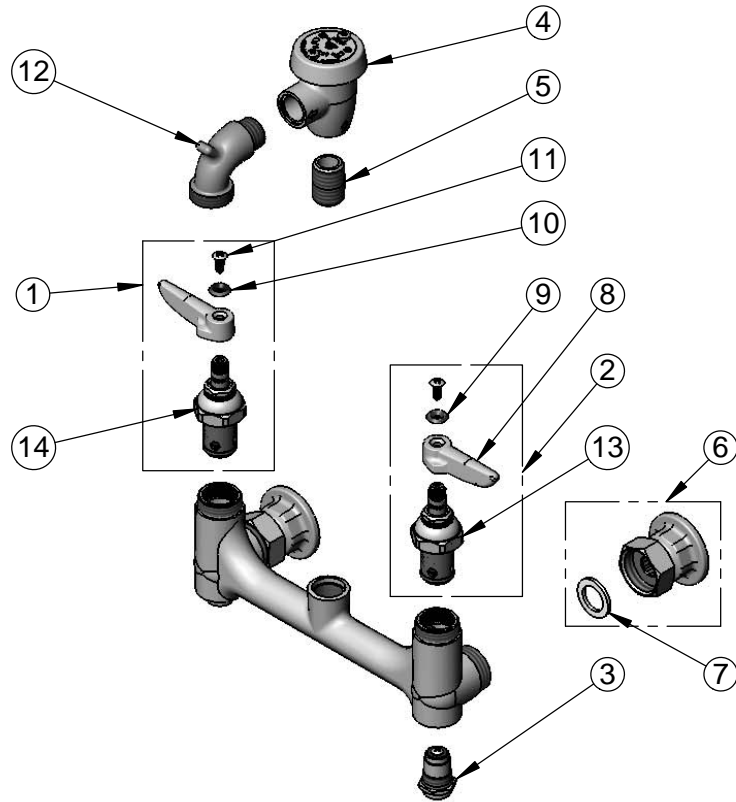
T&S BRASS AND BRONZE WORKS, INC.
 2 Saddleback Cove / P.O. Box 1088
 Travelers Rest, SC 29690

Model No.
B-0674-BSTP

Item No.

Travelers Rest, SC: 800-476-4103 • Simi Valley, CA: 800-423-0150 • Fax: 864-834-3518 • www.tsbrass.com

| ITEM NO. | SALES NO. | DESCRIPTION |
|----------|-----------|---------------------------------------------------------------|
| 1 | 002712-40 | Eterna Cartridge - RTC w/ Spring Check, Handle, Index & Screw |
| 2 | 002711-40 | Eterna Cartridge - LTC w/ Spring Check, Handle, Index & Screw |
| 3 | 163A | Built-in Service Stop |
| 4 | B-0969 | 1/2" NPT Vacuum Breaker |
| 5 | 002534-25 | Close Nipple, 1/2" NPT |
| 6 | 00AA | 1/2" NPT Female Eccentric Flange |
| 7 | 001019-45 | Coupling Nut Washer |
| 8 | 001638-45 | Lever Handle |
| 9 | 001660-45 | Blue Index-CW |
| 10 | 001661-45 | Red Index-HW |
| 11 | 000922-45 | Lever Handle Screw |
| 12 | 000270-40 | Spout, Garden Hose Male Outlet |
| 13 | 012442-40 | Eterna Cartridge - LTC w/ Spring Check |
| 14 | 012443-40 | Eterna Cartridge - RTC w/ Spring Check |



Product Specifications:

Wall Mount Service Sink Faucet, Eterna Cartridges w/ Spring Checks, Lever Handles, Pail Hook Spout w/ Garden Hose Male Outlet, Polish Chrome Finish, Built-In Service Stops & 1/2" NPT Female Adjustable Inlets

Product Compliance:

ASME A112.18.1 / CSA B125.1
 NSF 61 Exempt (Non-Potable)
 ANSI A117.1 (ADA)
 ASSE 1001 (VB)



T&S BRASS AND BRONZE WORKS, INC.

2 Saddleback Cove / P.O. Box 1088
Travelers Rest, SC 29690

Model No.

B-0674-CR-BSTP

Item No.

Travelers Rest, SC: 800-476-4103 • Simi Valley, CA: 800-423-0150 • Fax: 864-834-3518 • www.tsbrass.com

This Space for Architect/Engineer Approval

Job Name _____ Date _____

Model Specified _____ Quantity _____

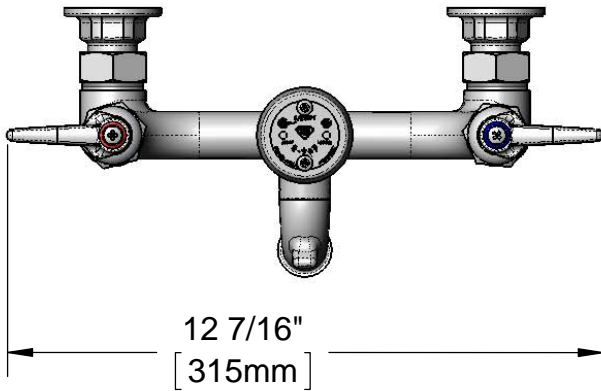
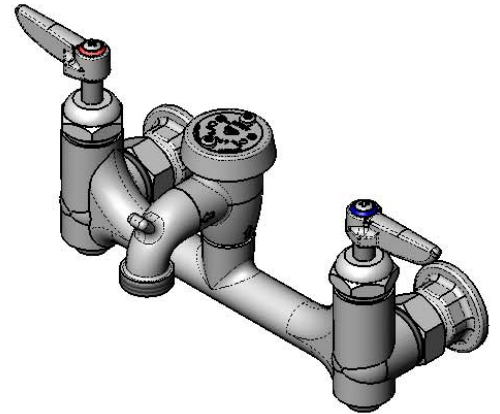
Customer/Wholesaler _____

Contractor _____

Architect/Engineer _____



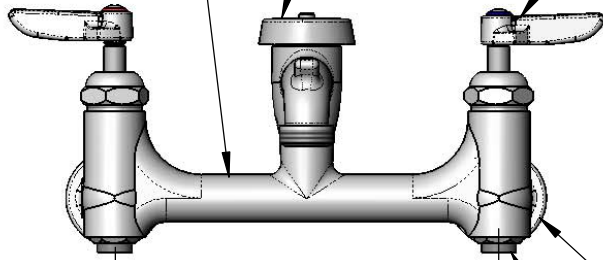
ADA Compliant



Polished Chrome Finish on Faucet Body & Spout

B-0969 1/2" NPT Atmospheric Vacuum Breaker

Cerama Cartridges w/ Check Valves & Lever Handles w/ Color Coded Indexes

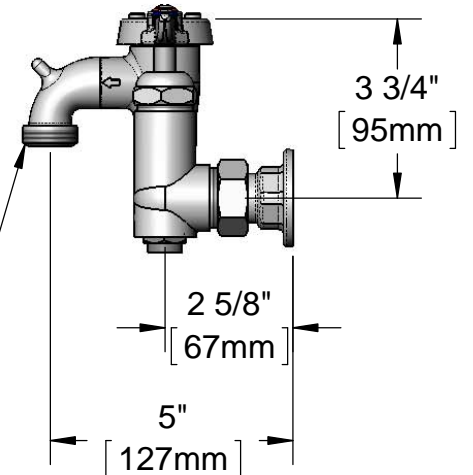


Male Garden Hose Connection

Ø 2" [51mm] Flanges w/ 1/2" NPT Female Inlets

Adjustable From 7 3/4" to 8 1/4" [197mm to 210mm]

163A Integral Service Stop



Product Specifications:

Polished Chrome Service Sink w/ Inlet Stops, Cerama Cartridges w/ Check Valves, Lever Handles, 1/2" NPT Vacuum Breaker & 1/2" NPT Female Inlets

Drawn

KJG

Checked

DHL

Approved

JHB

Scale:

1:4

Date:

04/27/12



T&S BRASS AND BRONZE WORKS, INC.

2 Saddleback Cove / P.O. Box 1088
Travelers Rest, SC 29690

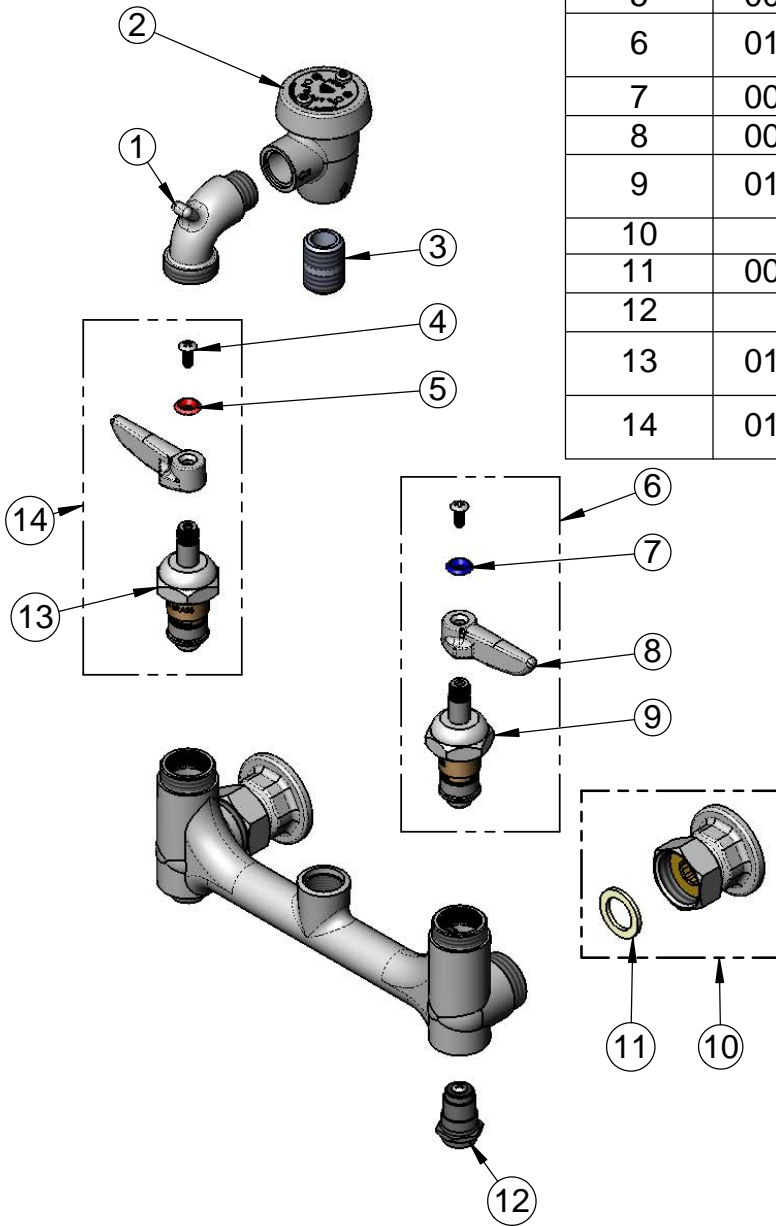
Model No.

B-0674-CR-BSTP

Item No.

Travelers Rest, SC: 800-476-4103 • Simi Valley, CA: 800-423-0150 • Fax: 864-834-3518 • www.tsbrass.com

| ITEM NO. | SALES NO. | DESCRIPTION |
|----------|-----------|-------------------------------------------------------------|
| 1 | 000270-40 | Spout, Garden Hose Outlet |
| 2 | B-0969 | 1/2" NPT Vacuum Breaker |
| 3 | 002534-25 | Close Nipple, 1/2" x 1 5/32" Lg Rough Chrome |
| 4 | 000922-45 | Lever Handle Screw |
| 5 | 001661-45 | Red Index-HW |
| 6 | 012447-25 | Cerama Cartridge, LTC w/ Check Valve, Handle, Index & Screw |
| 7 | 001660-45 | Blue Index-CW |
| 8 | 001638-45 | Lever Handle |
| 9 | 012395-25 | Cerama Cartridge, LTC w/ Bonnet & Check Valve |
| 10 | 00AA | 1/2" NPT Female Flange Assembly |
| 11 | 001019-45 | Coupling Nut Washer |
| 12 | 163A | Built-in Service Stop Assembly |
| 13 | 012394-25 | Cerama Cartridge, RTC w/ Bonnet & Check Valve |
| 14 | 012446-25 | Cerama Cartridge, RTC w/ Check Valve, Handle, Index & Screw |



Product Specifications:

Polished Chrome Service Sink w/ Inlet Stops, Cerama Cartridges w/ Check Valves, Lever Handles, 1/2" NPT Vacuum Breaker & 1/2" NPT Female Inlets

Drawn

KJG

Checked

DHL

Approved

JHB

Scale:

NTS

Date:

04/27/12



T&S BRASS AND BRONZE WORKS, INC.

2 Saddleback Cove / P.O. Box 1088
Travelers Rest, SC 29690

Model No.

B-0674-BSTR

Item No.

Travelers Rest, SC: 800-476-4103 • Simi Valley, CA: 800-423-0150 • Fax: 864-834-3518 • www.tsbrass.com



ADA Compliant

This Space for Architect/Engineer Approval

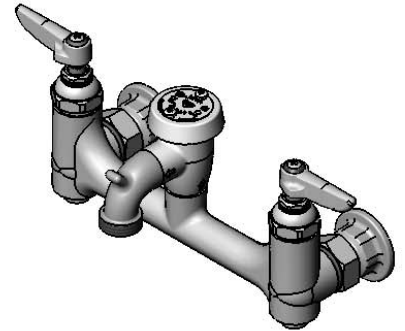
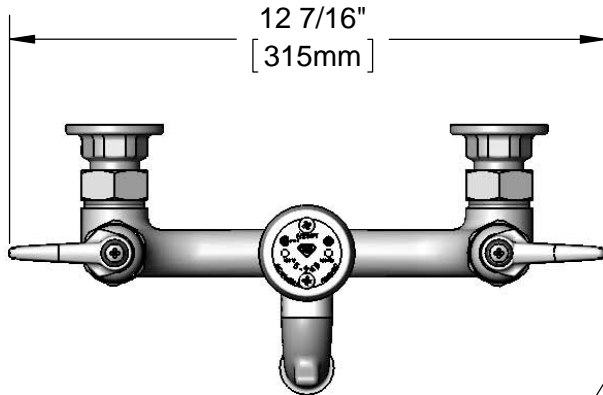
Job Name _____ Date _____

Model Specified _____ Quantity _____

Customer/Wholesaler _____

Contractor _____

Architect/Engineer _____



B-0969
1/2" NPT Vacuum
Breaker

Rough Chrome
Finish on Faucet
Body & Spout

Pail Hook Spout
w/ Garden Hose
Male Outlet

Eterna Cartridges w/
Spring Checks &
Lever Handles w/
Color Coded Indexes

Ø 2" [51mm]
Flanges w/
1/2" NPT
Female Inlets

Built-In Service
Stops

3 15/16"
[101mm]

Adjustable From
7 3/4" to 8 1/4"
[197mm to 210mm]

8"
[203mm]

1 1/16"
[27mm]

3 7/8"
[98mm]

2 3/8"
[61mm]

2 11/16"
[68mm]

Mounting Surface

Product Specifications:

8" Wall Mount Service Sink Faucet, Eterna Cartridges w/ Spring Checks, Lever Handles, Pail Hook Spout w/ Garden Hose Male Outlet, Rough Chrome Finish & 1/2" NPT Female Inlets

Product Compliance:

ASME A112.18.1 / CSA B125.1
NSF 61 Exempt (Non-Potable)
ANSI A117.1 (ADA)
ASSE 1001 (VB)



T&S BRASS AND BRONZE WORKS, INC.

2 Saddleback Cove / P.O. Box 1088
Travelers Rest, SC 29690

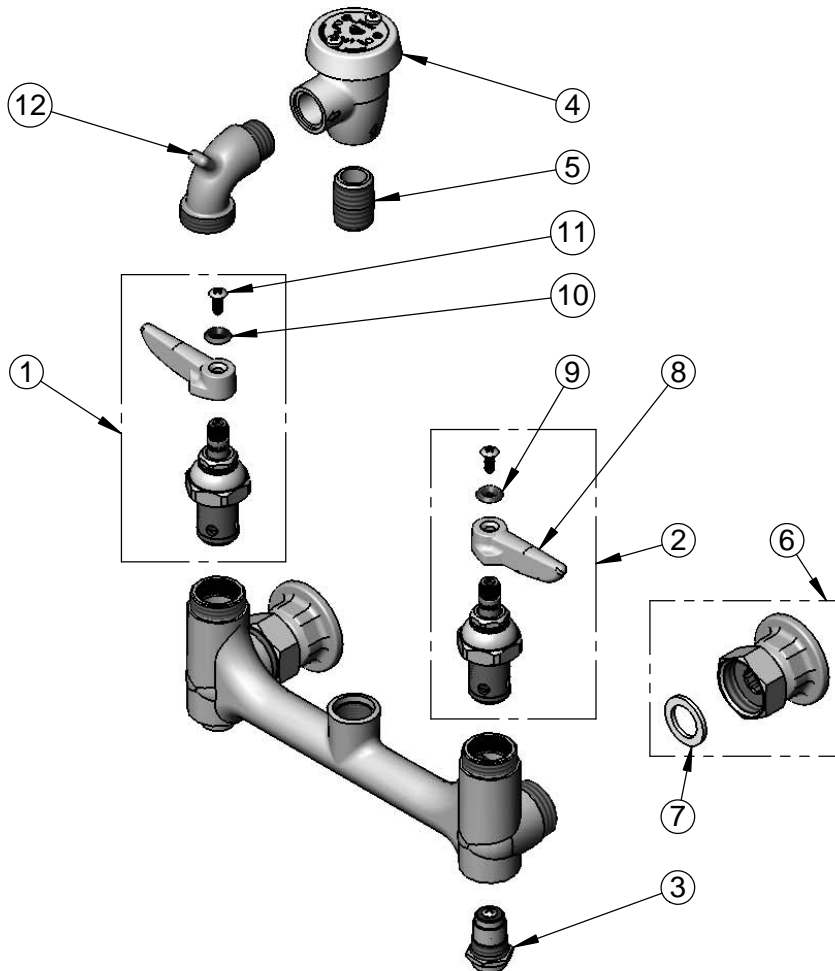
Model No.

B-0674-BSTR

Item No.

Travelers Rest, SC: 800-476-4103 • Simi Valley, CA: 800-423-0150 • Fax: 864-834-3518 • www.tsbrass.com

| ITEM NO. | SALES NO. | DESCRIPTION |
|----------|-----------|--------------------------------------------------------------|
| 1 | 002712-40 | Eterna Cartridge, RTC w/ Spring Check, Handle, Index & Screw |
| 2 | 002711-40 | Eterna Cartridge, LTC w/ Spring Check, Handle, Index & Screw |
| 3 | 163A | Built-in Service Stop |
| 4 | B-0969 | 1/2" NPT Vacuum Breaker |
| 5 | 002534-25 | Close Nipple, 1/2" NPT |
| 6 | 00AA | 1/2" NPT Female Eccentric Flange |
| 7 | 001019-45 | Coupling Nut Washer |
| 8 | 001638-45 | Lever Handle |
| 9 | 001660-45 | Blue Index-CW |
| 10 | 001661-45 | Red Index-HW |
| 11 | 000922-45 | Lever Handle Screw |
| 12 | 000270-25 | Spout w/ Garden Hose Male Outlet |



Product Specifications:

8" Wall Mount Service Sink Faucet, Eterna Cartridges w/ Spring Checks, Lever Handles, Pail Hook Spout w/ Garden Hose Male Outlet, Rough Chrome Finish & 1/2" NPT Female Inlets

Product Compliance:

ASME A112.18.1 / CSA B125.1
NSF 61 Exempt (Non-Potable)
ANSI A117.1 (ADA)
ASSE 1001 (VB)



T&S BRASS AND BRONZE WORKS, INC.

2 Saddleback Cove / P.O. Box 1088
Travelers Rest, SC 29690

Model No.

B-0674-CR-BSTR

Item No.

Travelers Rest, SC: 800-476-4103 • Simi Valley, CA: 800-423-0150 • Fax: 864-834-3518 • www.tsbrass.com

This Space for Architect/Engineer Approval

Job Name _____ Date _____

Model Specified _____ Quantity _____

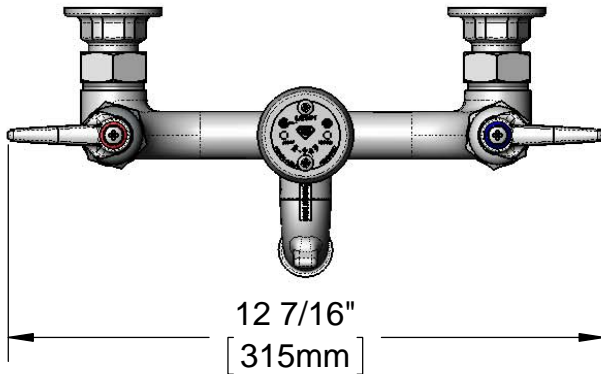
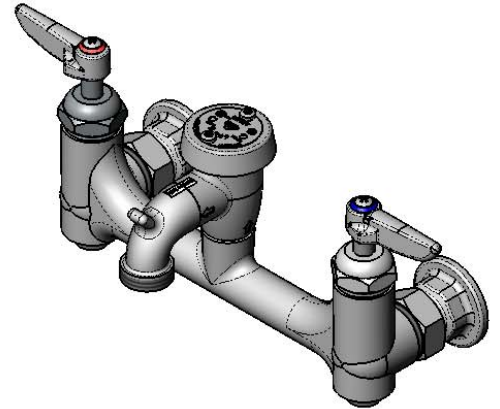
Customer/Wholesaler _____

Contractor _____

Architect/Engineer _____



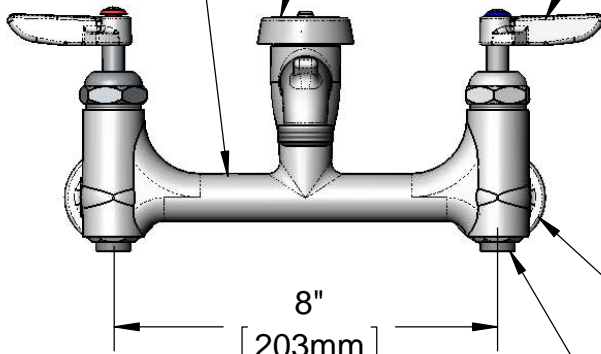
ADA Compliant



Rough Chrome Finish on Faucet Body & Spout

B-0969 1/2" NPT Atmospheric Vacuum Breaker

Cerama Cartridges w/ Check Valves & Lever Handles w/ Color Coded Indexes

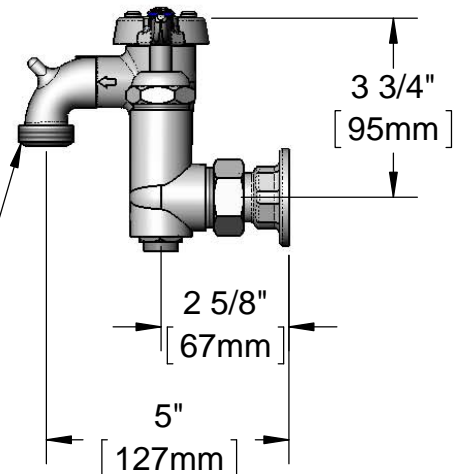


8" [203mm]
Adjustable From 7 3/4" to 8 1/4" [197mm to 210mm]

Male Garden Hose Connection

Ø 2" [51mm] Flanges w/ 1/2" NPT Female Inlets

16A Integral Service Stop



Product Specifications:
Rough Chrome Service Sink w/ Inlet Stops, Cerama Cartridges w/ Check Valves, Lever Handles, 1/2" NPT Vacuum Breaker & 1/2" NPT Female Inlets

Drawn

KJG

Checked

DHL

Approved

JHB

Scale:

1:4

Date:

04/27/12



T&S BRASS AND BRONZE WORKS, INC.

2 Saddleback Cove / P.O. Box 1088
Travelers Rest, SC 29690

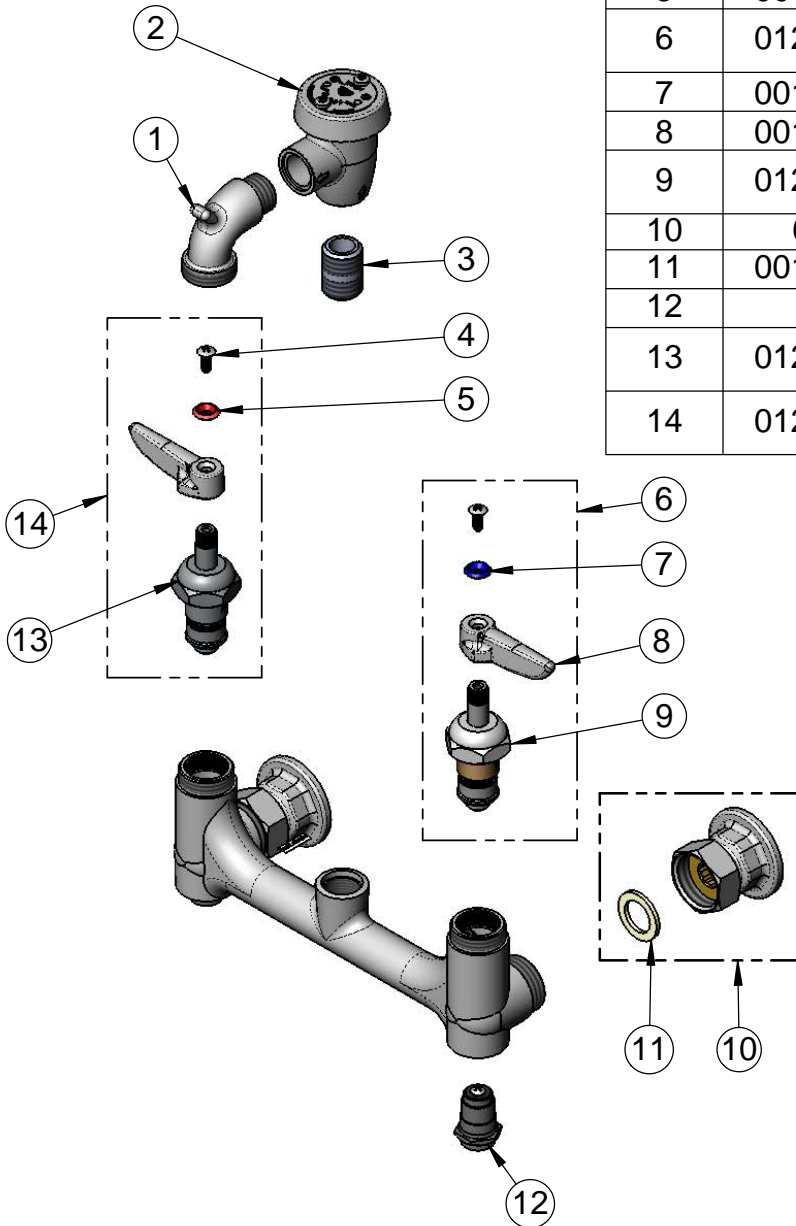
Model No.

B-0674-CR-BSTR

Item No.

Travelers Rest, SC: 800-476-4103 • Simi Valley, CA: 800-423-0150 • Fax: 864-834-3518 • www.tsbrass.com

| ITEM NO. | SALES NO. | DESCRIPTION |
|----------|-----------|-------------------------------------------------------------|
| 1 | 000270-25 | Rough Chrome Spout w/ Garden Hose Outlet |
| 2 | B-0969 | 1/2" NPT Vacuum Breaker |
| 3 | 002534-25 | Close Nipple, 1/2" x 1 5/32" Lg Rough Chrome |
| 4 | 000922-45 | Lever Handle Screw |
| 5 | 001661-45 | Red Index-HW |
| 6 | 012447-25 | Cerama Cartridge, LTC w/ Check Valve, Handle, Index & Screw |
| 7 | 001660-45 | Blue Index-CW |
| 8 | 001638-45 | Lever Handle |
| 9 | 012395-25 | Cerama Cartridge, LTC w/ Bonnet & Check Valve |
| 10 | 00AA | 1/2" NPT Female Flange Assembly |
| 11 | 001019-45 | Coupling Nut Washer |
| 12 | 163A | Built-in Service Stop Assembly |
| 13 | 012394-25 | Cerama Cartridge, RTC w/ Bonnet & Check Valve |
| 14 | 012446-25 | Cerama Cartridge, RTC w/ Check Valve, Handle, Index & Screw |



Product Specifications:
Rough Chrome Service Sink w/ Inlet Stops, Cerama Cartridges w/ Check Valves, Lever Handles, 1/2" NPT Vacuum Breaker & 1/2" NPT Female Inlets

| | | |
|----------------------|-----------------------|--------------------------|
| Drawn KJG | Checked DHL | Approved JHB |
| Scale: NTS | | Date: 04/27/12 |



T&S BRASS AND BRONZE WORKS, INC.

2 Saddleback Cove / P.O. Box 1088
Travelers Rest, SC 29690



REG. #A2601
ISO #9001

Model No.

B-0674-POL

Item No.

Travelers Rest, SC: 800-476-4103 • Simi Valley, CA: 800-423-0150 • Fax: 864-834-3518 • www.tsbrass.com

This Space for Architect/Engineer Approval

Job Name _____ Date _____

Model Specified _____ Quantity _____

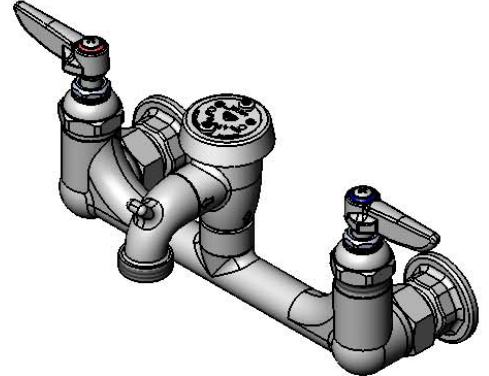
Customer/Wholesaler _____

Contractor _____

Architect/Engineer _____



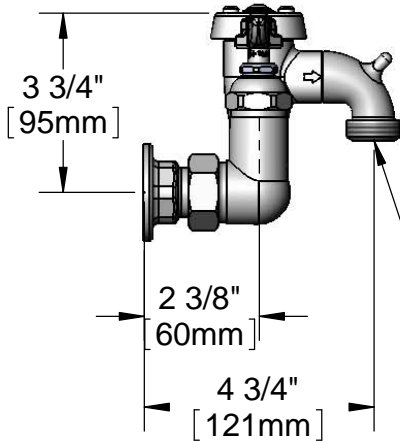
ADA Compliant



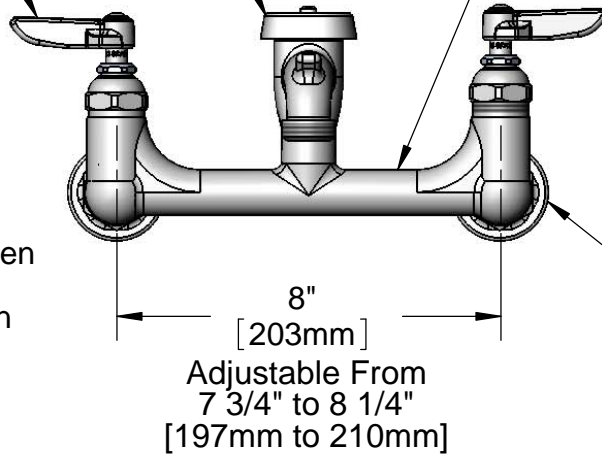
Eterna Cartridges
w/ Spring Check &
Lever Handles w/
Color Coded Indexes

B-0969
1/2" NPT
Atmospheric
Vacuum
Breaker

Polished Chrome
Finish on Faucet
Body & Spout



Male Garden
Hose
Connection



Ø 2" [51mm]
Flanges w/
1/2" NPT
Female Inlets

Product Specifications:
Polished Chrome Service Sink, Eterna Cartridges
w/ Spring Checks, Lever Handles

Drawn

DHL

Checked

KJG

Approved

JHB

Scale:

1:4

Date:

09/22/11



T&S BRASS AND BRONZE WORKS, INC.

2 Saddleback Cove / P.O. Box 1088
 Travelers Rest, SC 29690



REG. #A2601
 ISO #9001

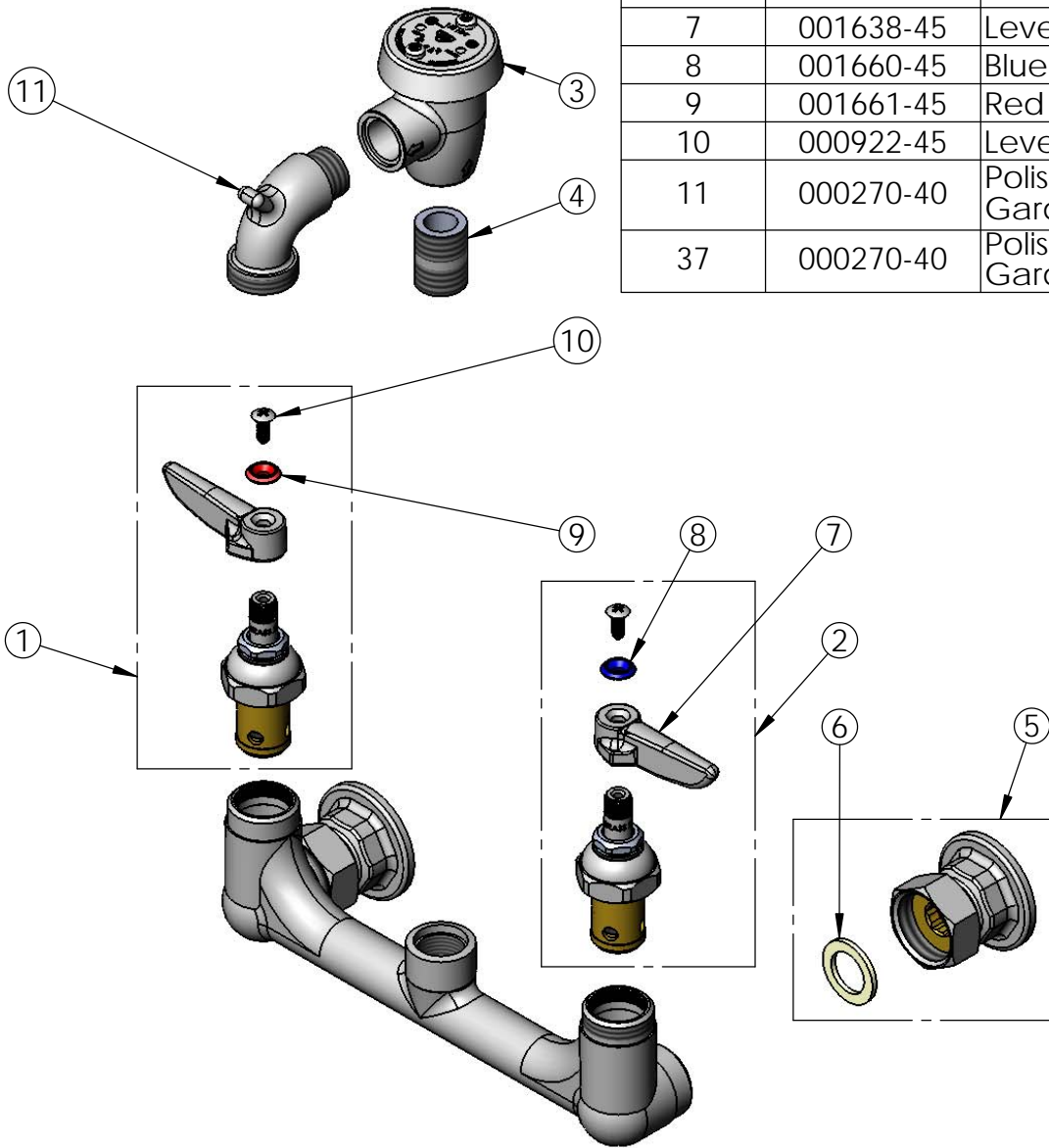
Model No.

B-0674-POL

Item No.

Travelers Rest, SC: 800-476-4103 • Simi Valley, CA: 800-423-0150 • Fax: 864-834-3518 • www.tsbrass.com

| ITEM NO. | SALES NO. | DESCRIPTION |
|----------|-----------|------------------------------------------------|
| 1 | 002712-40 | Eterna Cartridge - RTC |
| 2 | 002711-40 | Eterna Cartridge - LTC |
| 3 | B-0969 | 1/2" NPT Vacuum Breaker |
| 4 | 002534-25 | Close Nipple, 1/2" |
| 5 | 00AA | 1/2" NPT Coupling Flange |
| 6 | 001019-45 | Coupling Nut Washer |
| 7 | 001638-45 | Lever Handle |
| 8 | 001660-45 | Blue Index-CW |
| 9 | 001661-45 | Red Index-HW |
| 10 | 000922-45 | Lever Handle Screw |
| 11 | 000270-40 | Polished Chrome Spout w/ Garden Hose Outlet |
| 37 | 000270-40 | Polished Chrome Spout w/ Garden Hose Outlet |



Product Specifications:
 Polished Chrome Service Sink, Eterna Cartridges
 w/ Spring Checks, Lever Handles

| | | |
|----------------------|-----------------------|--------------------------|
| Drawn DHL | Checked KJG | Approved JHB |
| Scale: NTS | | Date: 09/22/11 |



T&S BRASS AND BRONZE WORKS, INC.

2 Saddleback Cove / P.O. Box 1088
 Travelers Rest, SC 29690



REG. #A2601
 ISO #9001

Model No.

B-0674-CR-POL

Item No.

Travelers Rest, SC: 800-476-4103 • Simi Valley, CA: 800-423-0150 • Fax: 864-834-3518 • www.tsbrass.com

This Space for Architect/Engineer Approval

Job Name _____ Date _____

Model Specified _____ Quantity _____

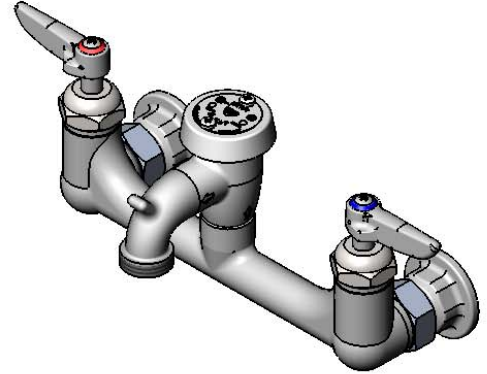
Customer/Wholesaler _____

Contractor _____

Architect/Engineer _____



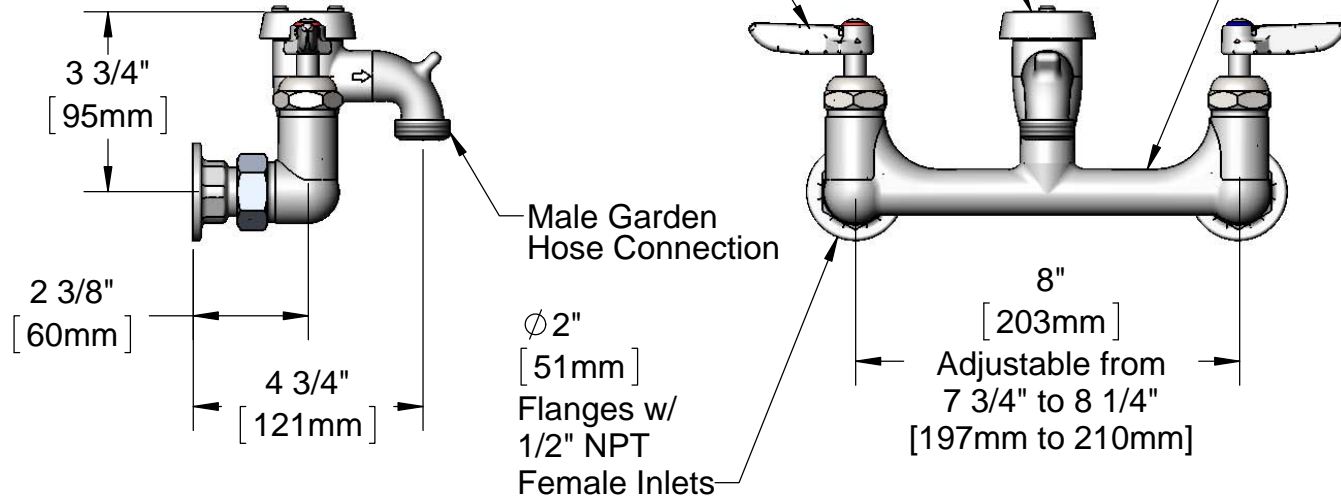
ADA Compliant



Cerama Cartridges
 w/ Check Valves &
 Lever Handles w/
 Color Coded Indexes

B-0969
 1/2" NPT
 Vacuum
 Breaker

Polished Chrome
 Finish on Faucet
 Body & Spout



Product Specifications:
 Service Sink Faucet w/ Cerama Cartridges w/ Check Valves, Lever
 Handles, 1/2 " NPT Female Inlets, & Polished Chrome

| | | |
|----------------------|-----------------------|--------------------------|
| Drawn KJG | Checked DMH | Approved JHB |
| Scale: 1:4 | | Date: 08/29/11 |



T&S BRASS AND BRONZE WORKS, INC.

2 Saddleback Cove / P.O. Box 1088
Travelers Rest, SC 29690



REG. #A2601
ISO #9001

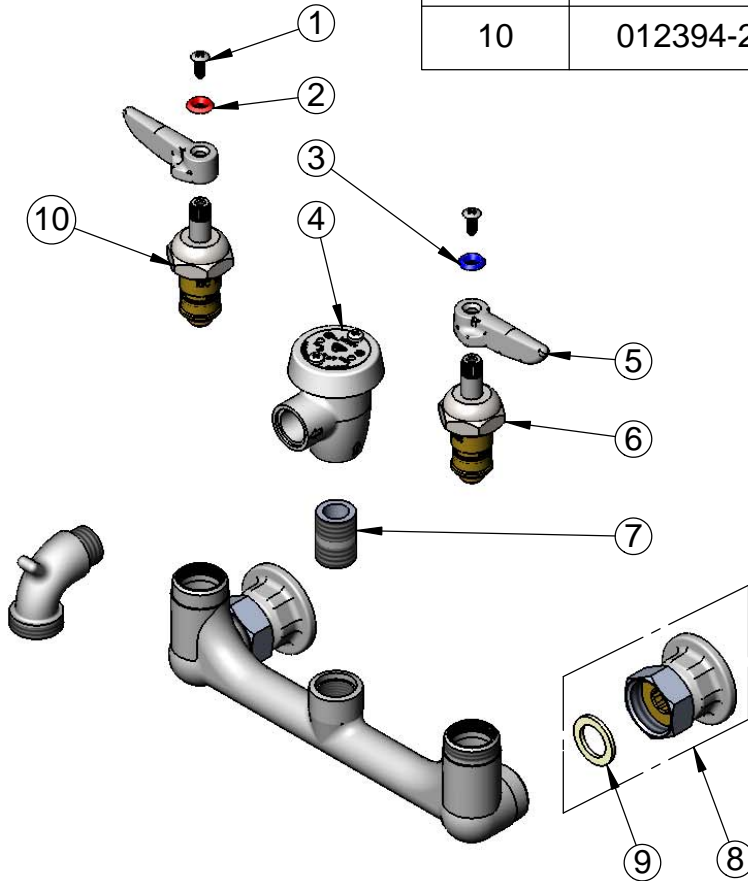
Model No.

B-0674-CR-POL

Item No.

Travelers Rest, SC: 800-476-4103 • Simi Valley, CA: 800-423-0150 • Fax: 864-834-3518 • www.tsbrass.com

| ITEM NO. | SALES NO. | DESCRIPTION |
|----------|-----------|----------------------------------------------|
| 1 | 000922-45 | Lever Handle Screw |
| 2 | 001661-45 | Red Index-HW |
| 3 | 001660-45 | Blue Index-CW |
| 4 | B-0969 | 1/2" NPT Vacuum Breaker |
| 5 | 001638-45 | Lever Handle |
| 6 | 012395-25 | Cerama Cartridge, LTC w/ Check Valve |
| 7 | 002534-25 | Close Nipple, 1/2" x 1 5/32" Lg Rough Chrome |
| 8 | 00AA | Flange Assembly |
| 9 | 001019-45 | Coupling Nut Washer |
| 10 | 012394-25 | Cerama Cartridge, RTC w/ Check Valve |



Product Specifications:

Service Sink Faucet w/ Cerama Cartridges w/ Check Valves, Lever Handles, 1/2 " NPT Female Inlets, & Polished Chrome

Drawn

KJG

Checked

DMH

Approved

JHB

Scale:

NTS

Date:

08/29/11



T&S BRASS AND BRONZE WORKS, INC.
 2 Saddleback Cove / P.O. Box 1088
 Travelers Rest, SC 29690

Model No.
B-0674-RGH

Item No.

Travelers Rest, SC: 800-476-4103 • Simi Valley, CA: 800-423-0150 • Fax: 864-834-3518 • www.tsbrass.com



ADA Compliant

This Space for Architect/Engineer Approval

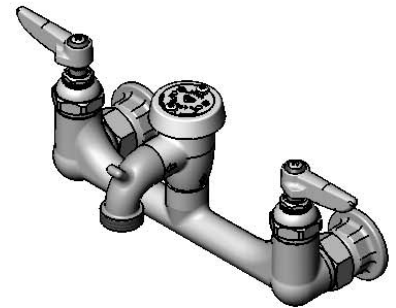
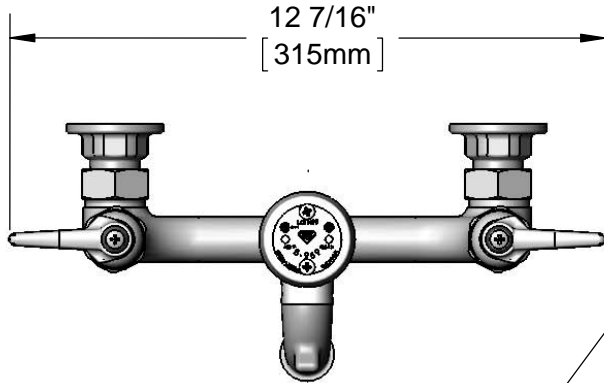
Job Name _____ Date _____

Model Specified _____ Quantity _____

Customer/Wholesaler _____

Contractor _____

Architect/Engineer _____

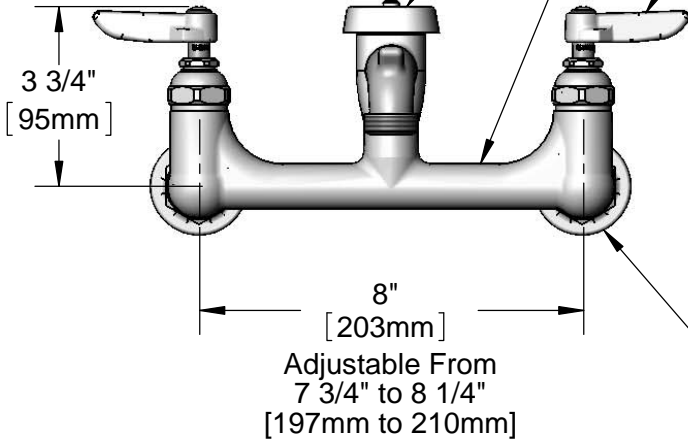


B-0969
 1/2" NPT Vacuum
 Breaker

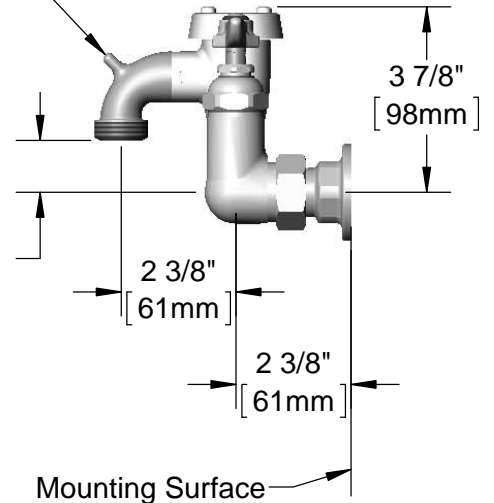
Rough Chrome
 Finish on Faucet
 Body & Spout

Pail Hook Spout
 w/ Garden Hose
 Male Outlet

Eterna Cartridges
 w/ Spring Checks &
 Lever Handles w/
 Color Coded Indexes



1 1/16"
 [27mm]



Ø 2" [51mm]
 Flanges w/
 1/2" NPT
 Female Inlets

Product Specifications:

8" Wall Mount Service Sink Faucet, Eterna Cartridges w/ Spring Checks, Lever Handles, Pail Hook Spout w/ Garden Hose Male Outlet, Rough Chrome Finish & 1/2" NPT Female Inlets

Product Compliance:

ASME A112.18.1 / CSA B125.1
 NSF 61 Exempt (Non-Potable)
 ANSI A117.1 (ADA)
 ASSE 1001 (VB)



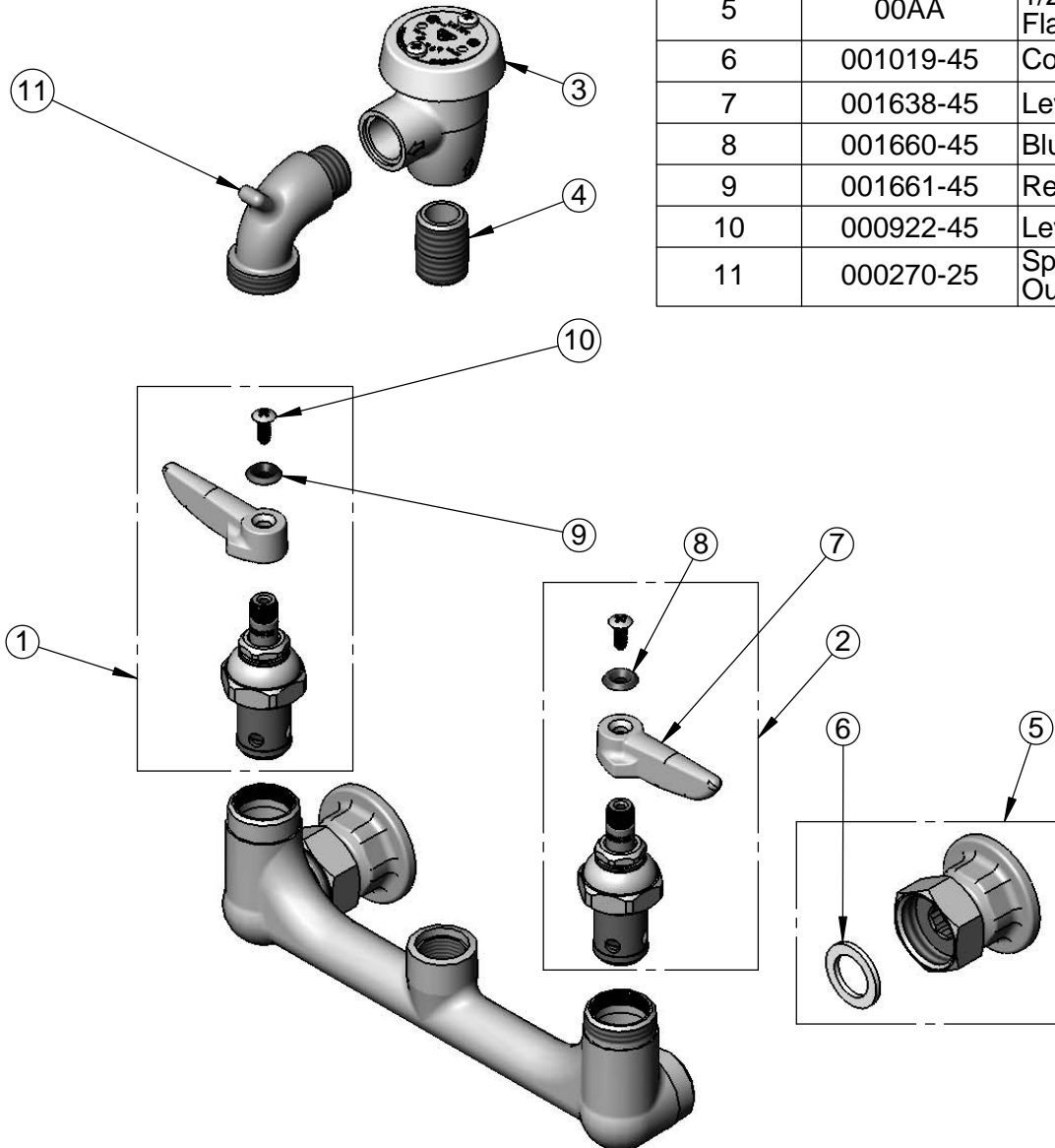
T&S BRASS AND BRONZE WORKS, INC.
 2 Saddleback Cove / P.O. Box 1088
 Travelers Rest, SC 29690

Model No.
B-0674-RGH

Item No.

Travelers Rest, SC: 800-476-4103 • Simi Valley, CA: 800-423-0150 • Fax: 864-834-3518 • www.tsbrass.com

| ITEM NO. | SALES NO. | DESCRIPTION |
|----------|-----------|--------------------------------------------------------------|
| 1 | 002712-40 | Eterna Cartridge, RTC w/ Spring Check, Handle, Index & Screw |
| 2 | 002711-40 | Eterna Cartridge, LTC w/ Spring Check, Handle, Index & Screw |
| 3 | B-0969 | 1/2" NPT Vacuum Breaker |
| 4 | 002534-25 | Close Nipple, 1/2" NPT |
| 5 | 00AA | 1/2" NPT Female Eccentric Flange |
| 6 | 001019-45 | Coupling Nut Washer |
| 7 | 001638-45 | Lever Handle |
| 8 | 001660-45 | Blue Index-CW |
| 9 | 001661-45 | Red Index-HW |
| 10 | 000922-45 | Lever Handle Screw |
| 11 | 000270-25 | Spout w/ Garden Hose Male Outlet |



Product Specifications:
 8" Wall Mount Service Sink Faucet, Eterna Cartridges w/ Spring Checks, Lever Handles, Pail Hook Spout w/ Garden Hose Male Outlet, Rough Chrome Finish & 1/2" NPT Female Inlets

Product Compliance:
 ASME A112.18.1 / CSA B125.1
 NSF 61 Exempt (Non-Potable)
 ANSI A117.1 (ADA)
 ASSE 1001 (VB)