



T&S BRASS AND BRONZE WORKS, INC.

2 Saddleback Cove / P.O. Box 1088
Travelers Rest, SC 29690



REG. #A2601
ISO #9001

Model No.

B-0298

Item No.

Travelers Rest, SC: 800-476-4103 Simi Valley, CA: 800-423-0150

www.tsbrass.com

This Space for Architect/Engineer Approval

Job Name _____ Date _____

Model Specified _____ Quantity _____

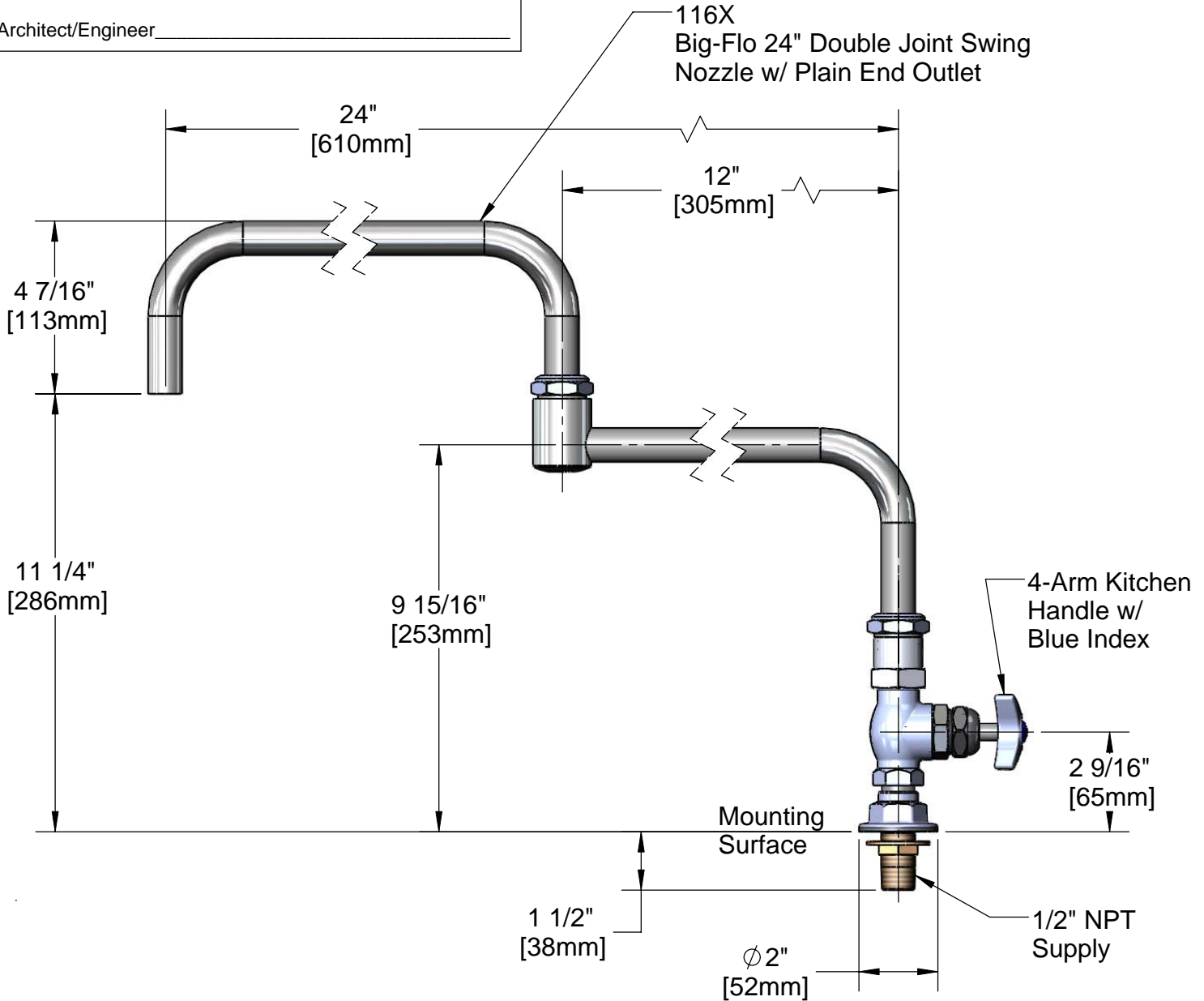
Customer/Wholesaler _____

Contractor _____

Architect/Engineer _____



ADA Compliant



Rough-In: ϕ 1" [25mm] Hole

Product Specifications:

Full Flow Faucet w/ Big-Flo 24" Double Swing Nozzle,
Control Valve & 1/2" NPT Female Inlet

| | | |
|----------------------|-----------------------|--------------------------|
| Drawn DMH | Checked KJG | Approved JHB |
| Scale: 1:4 | | Date: 02/08/10 |



T&S BRASS AND BRONZE WORKS, INC.

2 Saddleback Cove / P.O. Box 1088
Travelers Rest, SC 29690



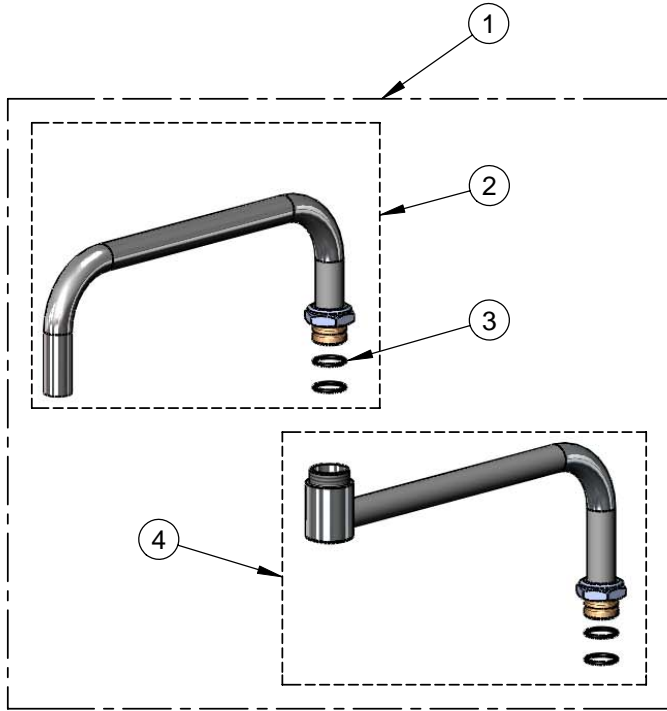
REG. #A2601
ISO #9001

Model No.

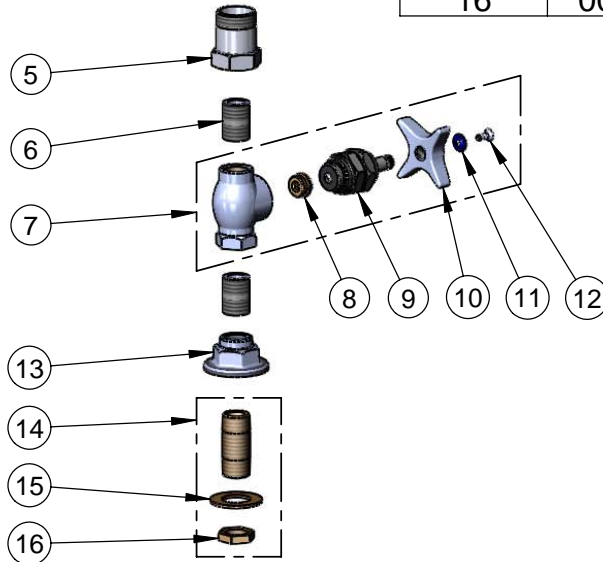
B-0298

Item No.

Travelers Rest, SC: 800-476-4103 Simi Valley, CA: 800-423-0150 Fax: 864-834-3518 www.tsbrass.com



| ITEM NO. | SALES NO. | DESCRIPTION |
|----------|-----------|--|
| 1 | 116X | 24" Double Joint Big-Flo Swing Nozzle |
| 2 | 117X | 12" Front Section |
| 3 | 001068-45 | O-ring, Size -118 |
| 4 | 118X | 12" Back Section |
| 5 | 000594-25 | Swivel Body x 1/2" NPT |
| 6 | 002534-25 | Close Nipple, 1/2" x 1 5/32" Lg Rough Chrome |
| 7 | 002900-40 | Valve Assembly w/ 4-Arm Handle |
| 8 | 000764-20 | Seat, B-290 RM |
| 9 | 006482-40 | Spindle Asm, B-0290 (RH) |
| 10 | 002521-45 | 4-Arm Handle |
| 11 | 001660-45 | Blue Index-CW |
| 12 | 000922-45 | Lever Handle Screw |
| 13 | 000013-40 | Flange, 1/2" NPT Wall Mount |
| 14 | B-0425 | Supply Nipple Unit, 1/2" NPT |
| 15 | 000999-45 | Brass Lock Washer |
| 16 | 002954-45 | Shank Lock Nut |



Product Specifications:

Full Flow Faucet w/ Big-Flo 24" Double Swing Nozzle, Control Valve & 1/2" NPT Female Inlet

| | | |
|----------------------|-----------------------|--------------------------|
| Drawn DMH | Checked KJG | Approved JHB |
| Scale: NTS | | Date: 02/08/10 |