



RELIABILITY BUILT IN™

Limited One Year Warranty

T&S warrants to the original purchaser (other than for purposes of resale) that such product is free from defects in material and workmanship for a period of one (1) year from the date of purchase. During this one-year warranty period, if the product is found to be defective, T&S shall, at its options, repair and/or replace it. To obtain warranty service, products must be returned to...

*T&S Brass and Bronze Works, Inc.
Attn: Warranty Repair Department
2 Saddleback Cove
Travelers Rest, SC 29690*

Shipping, freight, insurance, and other transportation charges of the product to T&S and the return of repaired or replaced product to the purchaser are the responsibility of the purchaser. Repair and/or replacement shall be made within a reasonable time after receipt by T&S of the returned product. This warranty does not cover items which have received secondary finishing or have been altered or modified after purchase, or for defects caused by physical abuse to or misuse of the product, or shipment of the products.

Any express warranty not provided herein, and any remedy for Breach of Contract which might arise, is hereby excluded and disclaimed. Any implied warranties of merchantability or fitness for a particular purpose are limited to one year in duration. Under no circumstances shall T&S be liable for loss of use or any special consequential costs, expenses or damages.

Some states do not allow limitations on how long and implied warranty lasts or the exclusion or limitation of incidental or consequential damages, so the above limitations or exclusions may not apply to you. Specific rights under this warranty and other rights vary from state to state.

P/N: 098-003115-45 Rev.6

Date: 07-11-14

Drawn: TEH

Checked: DMH 09-12-14

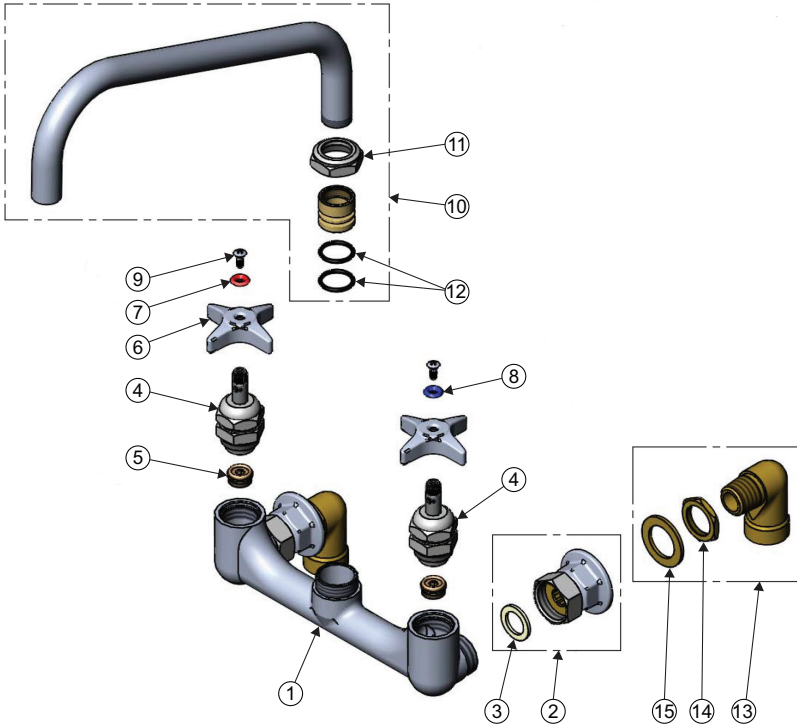
Approved: JHB 09-19-14

Installation and Maintenance Instructions



Kettle And Pot Sink Faucet B-0290 and B-0291 Series

Exploded View



Part Number Guide

Faucet Body Assemblies

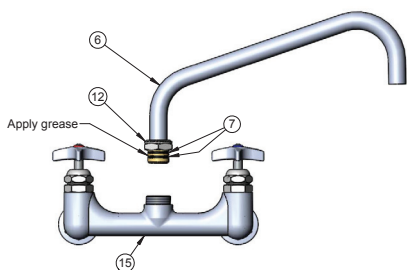
1	Asm, Base Faucet	002840-40
2	3/4" NPT Female Eccentric Flange	00BB
3	Coupling Nut Washer	001019-45
4	Big-Flo Cartridge, RTC	006482-40
5	Seat, Big-Flo	000764-20
6	4-Arm Handle	002521-45
7	Index, Red, Hot	001661-45
8	Index, Blue, Cold	001660-45
9	Screw, Lever Handle	000922-45
10	Asm, 12" Big-Flo Swing Nozzle	114X
	Asm, 18" Big-Flo Swing Nozzle	115X
11	Nut, Swivel	000724-25
12	O-Ring	001068-45
13	Asm, 3/4" Short Elbow Inlet	00LL
14	Lock Nut, 3/4-14 NPSM	000971-45
15	Washer	001005-45

General Instructions

Swing Nozzle Installation:

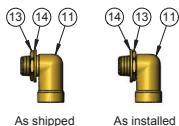
Note: Nozzles should be installed first.

1. Apply grease supplied with faucet to swivel piece and o-rings on the nozzle assembly.
2. Install nozzle assembly into base faucet.
3. Tighten swivel nut.



Faucet Installation:

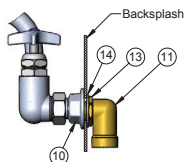
4. Shut off water supply and drain lines. Drill (2) 1 1/4" [32mm] diameter holes on 8" [203mm] centers where faucet is to be installed.



5. Remove lock nuts and washers from 3/4" short elbows and reinstall in reverse order (lock nuts first then washers) back onto elbows.

Note: Other supply lines (supplied by others) can be used instead of the 3/4" short elbows to connect to the 3/4" NPT female flanged inlets of faucet assembly.

6. Apply Teflon tape or other pipe thread sealant to male threads of 3/4" short elbows.



7. Insert male threaded ends through holes from back side of backsplash.
8. Connect elbows to 3/4" NPT female flanged inlets of faucet assembly.
9. Tighten lock nuts to secure faucet to backsplash.
10. Connect water supply lines to faucet inlets.
11. Turn on water supply and check for leaks.

RELATED T&S BRASS PRODUCT LINE



114X
Big Flow
Spout



B-0296
Big-Flo
Faucet

T&S BRASS AND BRONZE WORKS, INC.

A firm commitment to application-engineered plumbing products

2 Saddleback Cove, P.O. Box 1088,
Travelers Rest, SC 29690

Phone: (864) 834-4102

Fax: (864) 834-3518

E-mail: tsbrass@tsbrass.com

T & S Brass-Europe
'De Veenhoeve'
Oude Nieuwveenseweg 84
2441 CW Nieuwveen

The Netherlands



RELIABILITY BUILT IN™