

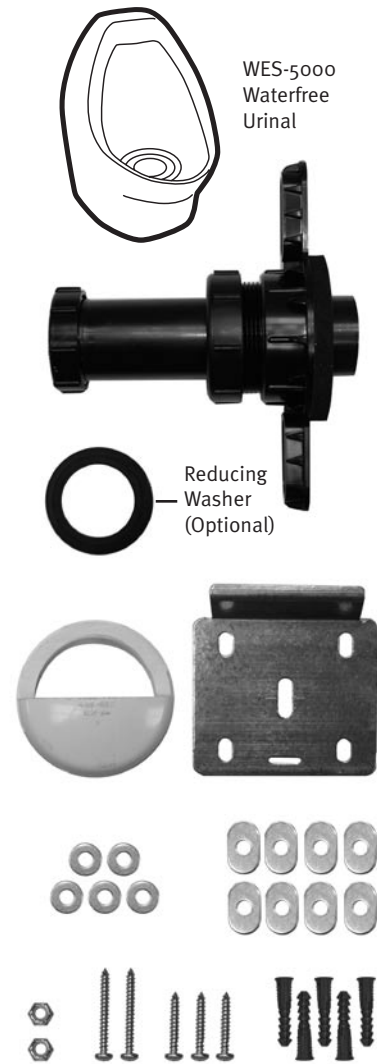
WES-5000 WATERFREE URINAL INSTALLATION INSTRUCTIONS

SLOAN
Waterfree

Before Installing

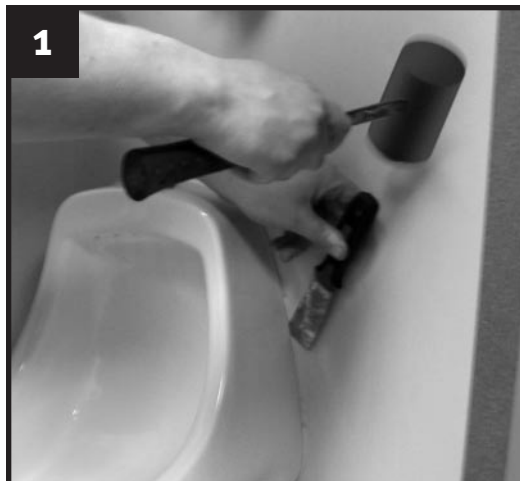
- Check drain height and wall condition. Determine if adjustments or repairs are needed before removing the old bowl.
- Shut off water supply and cap the nipple.

Verify Contents

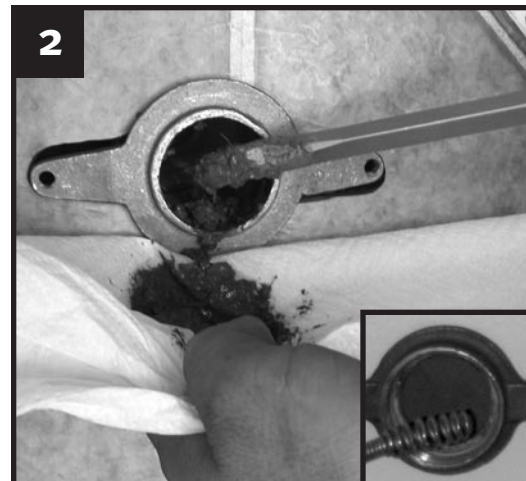


Tools required:

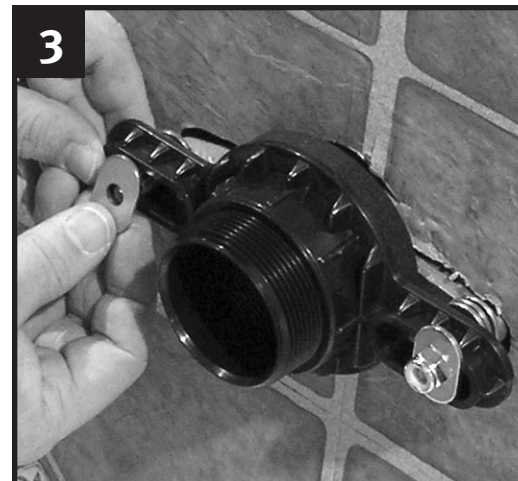
- Electric drill with 5/16" masonry bit and philips head bit
- Adjustable hammer drill (if wall has ceramic tile)
- Screwdriver (philips and flat head)
- Deep socket or open-end wrench (1/2")
- Channel-lock pliers (16")
- Rubber mallet
- Putty knife
- Utility knife
- Level (24")
- Flashlight
- Snake/auger to clear drain line



1 Carefully remove the existing bowl and clean wall.



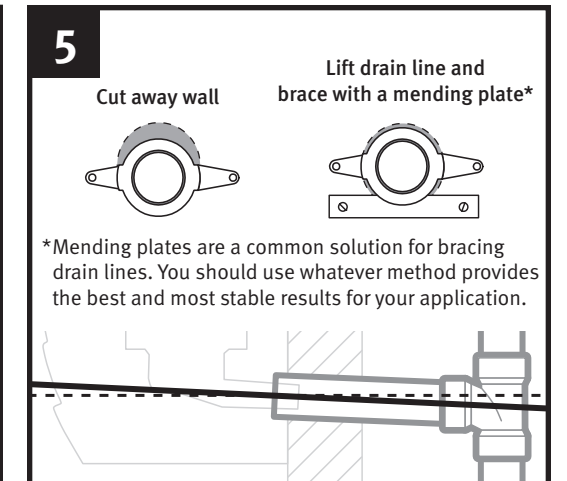
2 Scrape the drain line nipple to ensure there is no build-up. Then, auger the line to ensure there is no blockage.



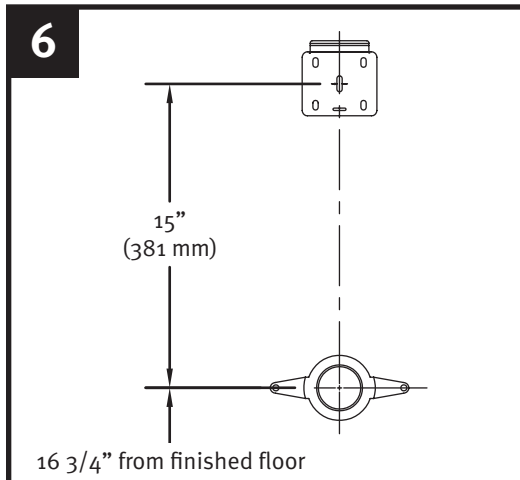
3 Install the uni-coupler with 3 spacer washers on each stud between the uni-coupler and spud flange. Then install the drain line test cap.



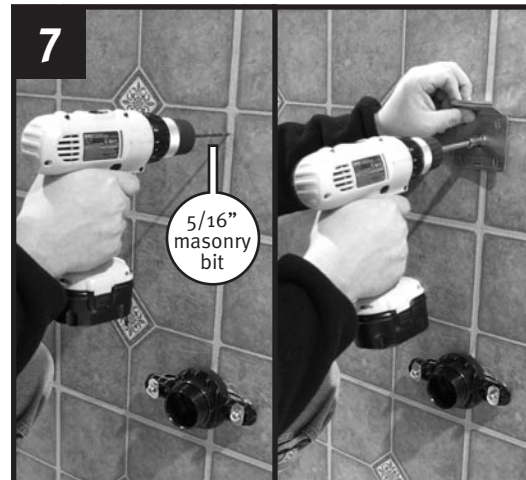
4 Slowly add water then check pitch/slope with flashlight. There should be no water present in the cap or nipple.



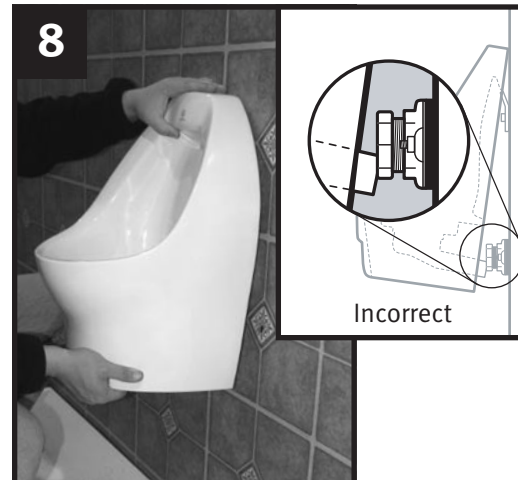
5 Adjust the drain to achieve pitch. Code requires a 1/4" drop per foot of drain line for proper pitch.



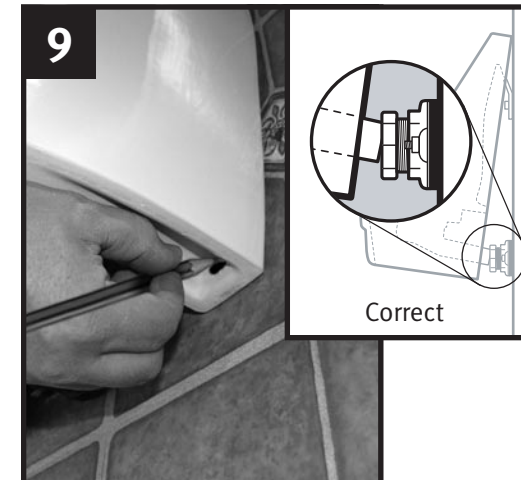
6 Measure and mark the rough-in.



7 Install the hanger bracket with one screw.



8 Hang the bowl on the bracket and check tail pipe alignment, then remove the bowl and adjust the bracket as needed.



9 Re-hang and recheck bowl alignment with the drain line. Mark anchor holes then remove the bowl.



10 Drill two more holes for the bracket and install additional screws. Also drill holes for the lower anchor screws.



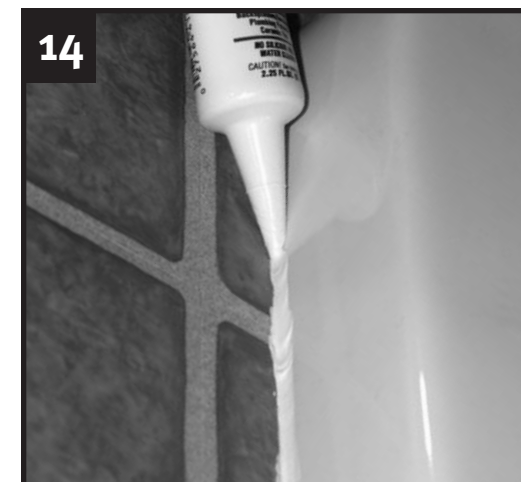
11 Install the extension tube onto the housing tail pipe and slide the 2" slip joint nut and washer onto the extension tube.



12 Hang the bowl, tighten uni-coupler fittings, and install anchor screws with washers.



13 Perform water test to ensure good flow and verify there are no leaks.



14 Caulk around the bowl (caulk supplied by installer).



15 Install and prepare the cartridge, per the cartridge instruction sheet.