

# TC AutoFoam

Touch-Free Foam Skin Care System



technical concepts  
Innovative Hygiene Solutions

**This aesthetically superior system provides enriched foam formulations via a touch-free, wall-mounted dispenser. This touch-free system reduces the chance for cross-contamination and encourages healthy hand washing. Four refill formulas are available.**

### Features:

- SmartSensor™ patented technology detects user's hand to automatically dispense a 0.4 ml dose of foam.
- On/Off Tone Switch allows the user to turn off/on the tone for low battery/low soap indicator. The "on" position is recommended for set up.
- Red LED status light starts to blink when refill is low (at 100 doses). The light will flash 1 time every 2 seconds. It will also beep 2 times every 8 seconds to indicate the refill needs replacing, if the optional tone switch is "on."
- Yellow LED status light blinks when battery life is low.
- Green LED blinks when object is in the sensor field.
- Interference Tone – if an object is in the sensor field for more than 10 seconds an optional beep tone will sound.
- Installation Set Up – Dispenser must be installed far enough above the counter (greater than 12.5") to prevent interference with the sensor.

### Specifications:

- Up to 2,750 hand washes per refill
- Refill pouch size: 1100 ml
- Mounts to a wall with screws and anchors or double-sided tape
- Dispenses 0.4 ml of foam per dose
- Battery requirements: 4 C-Cell alkaline batteries (Sold Separately)
- Battery Life: 120,000 cycles or 3 years, whichever comes first



### AutoFoam Touch-Free 1100 ml Dispensers:

Stock #	Description
---------	-------------

- |             |                               |
|-------------|-------------------------------|
| 750411..... | Black w/Chrome Insert (shown) |
| 750127..... | Black w/Black Insert          |
| 750139..... | Black w/Gray Insert           |
| 750138..... | White w/Black Insert          |
| 750140..... | White w/Gray Insert           |
| 750409..... | White w/Blue Insert           |
| 750410..... | Clear w/Clear Insert          |

Case Pack: 10, Weight: 24.75 lbs., Cube: 25.25 ft<sup>3</sup>

### Starter Kits:

Stock #	Description
---------	-------------

- |             |   |
|-------------|---|
| 750333..... | Starter Kit White w/Grey Insert   |
| 750334..... | Starter Kit Black w/Black Insert<br>(Starter Kit includes 1 dispenser and 1 Enriched Foam Lotion Soap with Moisturizers refill) |



### AutoFoam 1100 ml Refills:

Stock #	Description
---------	-------------

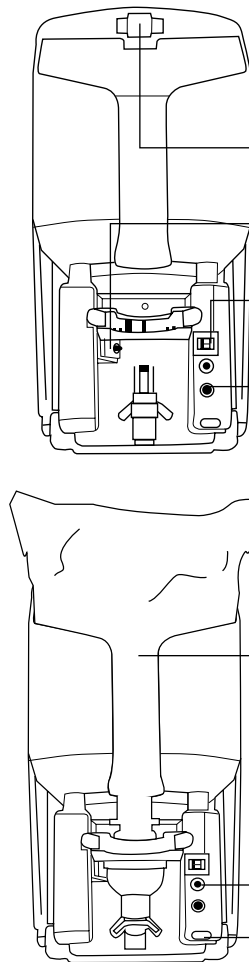
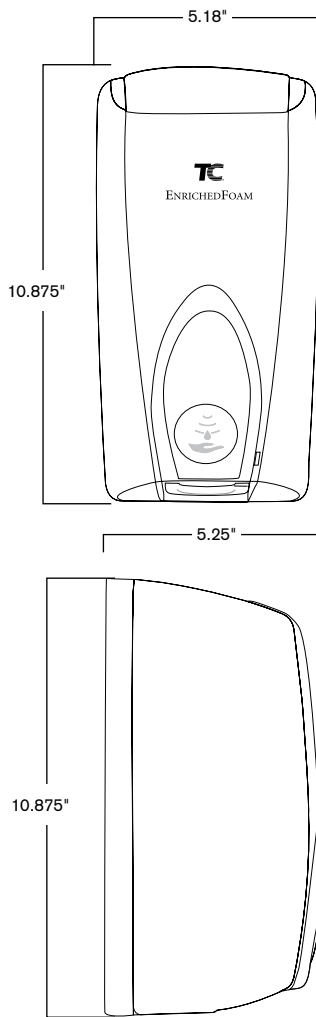
- |             |  |
|-------------|--|
| 750112..... | Lotion Soap w/Moisturizers             |
| 750111..... | Antibacterial E2-Rated Soap            |
| 750593..... | Alcohol-Free Hand Sanitizer (E3-Rated) |
| 750591..... | Alcohol Hand Sanitizer                 |

Case Pack: 4, Weight: 10.85 lbs., Cube: .031 ft<sup>3</sup>

\*This product meets the Green Seal™ environmental standard for institutional hand cleaners based on its reduced human and aquatic toxicity and reduced smog production potential.



# AutoFoam System Specifications



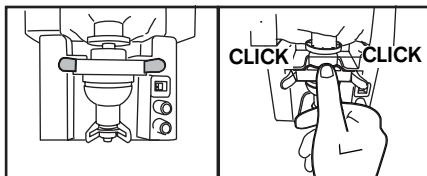
## AutoFoam System Features:

- Key locked dispenser protects batteries and refill
- Automatic Refill Button: Resets counter when new refill is installed
- On/Off Tone Switch: Allows the user to turn off/on the tone for low battery/low soap indicator. The "on" position is recommended for set up
- Battery Life Indicator: Yellow LED status light blinks when battery is low, and (optional) beep will sound
- Refill Level Indicator: Red LED status light blinks when refill is low or empty, and (optional) beep will sound
- Large 1100 ml Refill Capacity delivers up to 2,750 handwashes
- Cover Switch: Prevents unit operation when cover is open
- SmartSensor™ patented technology detects user's hand to automatically dispense a dose of foam soap

## AutoFoam System

### Quick Installation Instructions:

1. Mounts to wall, mirror or tile with screws/anchors and/or double-sided tape.
2. Position the dispenser a minimum of 12.5 inches (31.75 centimeters) above the counter to prevent any interference with the sensor.
3. Be sure the refill is locked into place before closing the cover. Align top and bottom of refill in holder. When refill is installed properly, after it is clicked in, the unit will beep.



## Compliance:

- Designed to meet A.D.A. requirements
- Enriched Lotion Soap with Moisturizers is Green Seal Certified
- Dispensers are CE, RoHS and WEEE compliant

## Environmental Highlights:

- Industry leading battery life of 120,000 handwashes or 3 years
- Bulk Pack reduces packaging waste up to 80%

## Warranty:

- 3 years against defects in parts and workmanship



ADA COMPLIANT



**technical concepts**

Innovative Hygiene Solutions

[www.airdelights.com](http://www.airdelights.com)

### World Headquarters:

Serving North and South America

Air Delights, Inc.  
11170 SW 5th St., Ste. 100,  
Beaverton, OR U.S.A.  
Toll Free: 1-800-440-5556  
Fax: 1-503-643-8224

### European Headquarters:

Serving Europe, Africa and Middle East

Air Delights, Inc.  
11170 SW 5th St., Ste. 100,  
Beaverton, OR U.S.A.  
Toll Free: 1-800-440-5556  
Fax: 1-503-643-8224

### Asian Headquarters:

Serving Asia and Pacific

Air Delights, Inc.  
11170 SW 5th St., Ste. 100,  
Beaverton, OR U.S.A.  
Toll Free: 1-800-440-5556  
Fax: 1-503-643-8224

