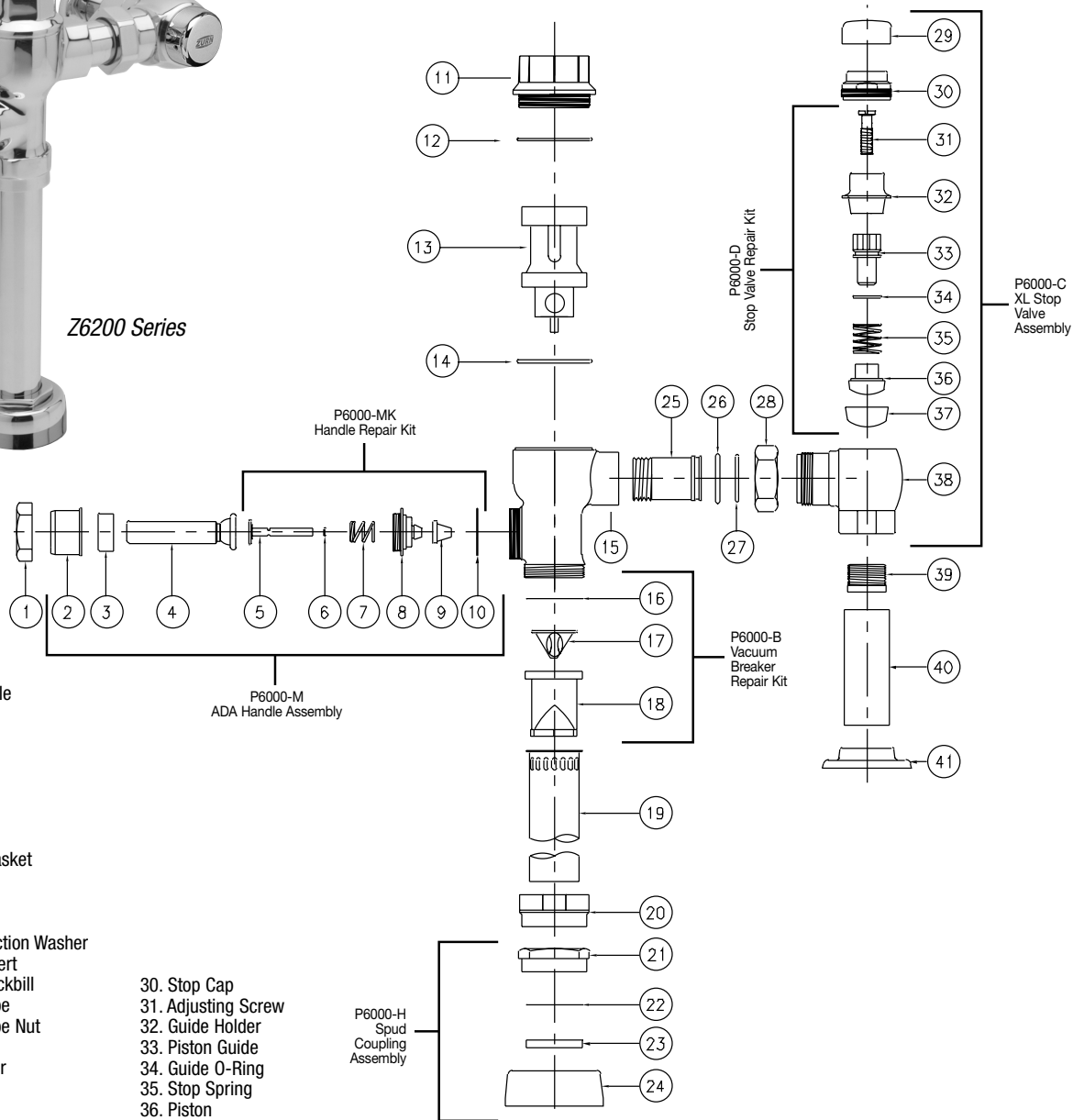


Metroflush® Parts Replacement & Repair Guide



Z6200 Series



Parts Identification

- | | |
|---|--------------------------|
| 1. Handle Nut | 30. Stop Cap |
| 2. Handle Sleeve | 31. Adjusting Screw |
| 3. Handle Insert | 32. Guide Holder |
| 4. Low Force/
ADA Compliant Handle | 33. Piston Guide |
| 5. Actuator Rod | 34. Guide O-Ring |
| 6. Handle O-Ring | 35. Stop Spring |
| 7. Handle Spring | 36. Piston |
| 8. Handle Seal Retainer | 37. Piston Seal |
| 9. Handle Seal | 38. Stop Body |
| 10. Gasket | 39. Sweat Solder Adaptor |
| 11. Valve Body Cover | 40. Supply Cover Tube |
| 12. Valve Body Cover Gasket | 41. Cast Wall Escutcheon |
| 13. Internal Kit | |
| 14. Main Seat | |
| 15. Valve Body | |
| 16. Vacuum Breaker Friction Washer | |
| 17. Vacuum Breaker Insert | |
| 18. Vacuum Breaker Duckbill | |
| 19. Vacuum Breaker Tube | |
| 20. Vacuum Breaker Tube Nut | |
| 21. Spud Nut | |
| 22. Spud Friction Washer | |
| 23. Spud Sleeve | |
| 24. Spud Escutcheon | |
| 25. Tailpiece | |
| 26. Snap Ring | |
| 27. Tailpiece O-Ring | |
| 28. Locking Nut | |
| 29. Vandal-Resistant Control Stop Cover | |

Covers and Repair Kits	Product No.
Outside Cover - CP - Item 11	P6200-LL
Outside Cover O-Ring - Item 12	P6200-L12
Closet Repair Kit - Item 13	P6200-EC
Urinal Repair Kit - Item 13	P6200-EU
Low Consumption Closet Kit - Item 13	P6200-EC-WS1
Low Consumption Urinal Kit - Item 13	P6200-EU-WS1
Main Seat - Item 14	P6200-E14

Handle Assembly and Repair Kits	Product No.
ADA Handle Assembly (Side) Includes Items 2-10	P6000-M
Handle Repair Kit (Side) Includes Items 5-10	P6000-MK
Handle Seal Includes Item 9	P6000-M9
Handle Gasket Includes Item 10	P6000-M10
Control Stop Repair Kit and Parts	Product No.
Control Stop Repair Kit for 1" and 3/4", Includes Items 31-37	P6000-D-SD
Seal Seat for 1" and 3/4", Includes Item 37	P6000-D42
VP Control Stop Repair Kit for 1" and 3/4", Includes Items 31-37.	P6000-D-VP
Vandal-Resistant Cover Includes Item 29	P6000-VC

Adjustable Tailpieces	Product No.
Adjustable Tailpiece for Standard Flush Valve Includes Items 25-27.	P6000-J1
Tailpiece Coupling Assembly Includes Items 26-28	P6000-K
Tailpiece Locking Ring Includes Item 26	P6000-C30
Tailpiece O-Ring Includes Item 26	P6000-C31
Coupling Nut Includes Item 28	P6000-C32
Flush Connections and Spud Coupling Kits	Product No.
Flush Tube Assembly for Flush Valves Includes Items 16-20. Specify diameter and length: 1-1/2", 1-1/4", 3/4".	P6000-A
Vacuum Breaker Repair Kit Includes Items 16-18	P6000-B
Spud Coupling Assembly Includes Items 21-24. Specify size: 1-1/2", 1-1/4", 3/4".	P6000-H