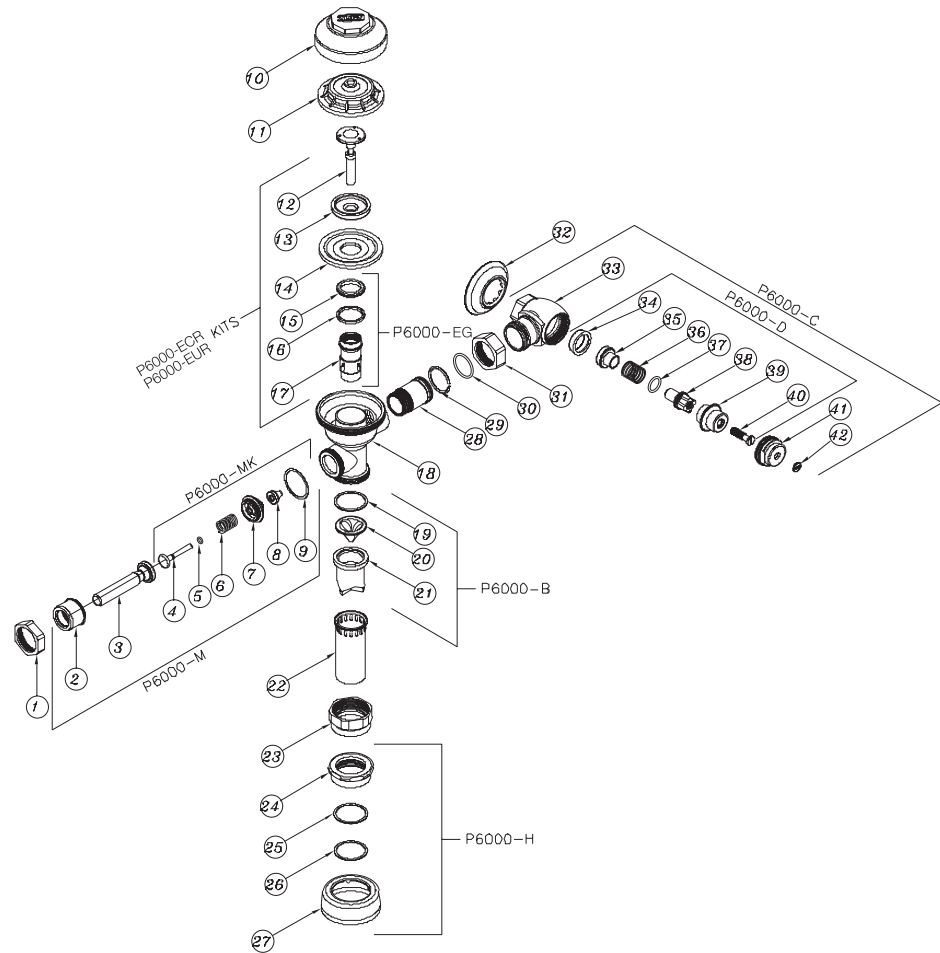




Aquaflush Exposed Repair Kits

Parts Identification

1. Handle Nut
2. Handle Sleeve and Insert
3. Low Force/ADA Compliant Handle
4. Actuator Rod
5. Handle O-Ring
6. Handle Spring
7. Handle Seal Retainer
8. Handle Seal
9. Gasket
10. Valve Body Cover
11. Plastic Cover
12. Trip Mechanism
13. Retainer Disc
14. Diaphragm
15. Flow Ring
16. Guide Ring
17. Cylinder Slide
18. Valve Body
19. Vacuum Breaker Friction Washer
20. Vacuum Breaker Insert
21. Vacuum Breaker Duckbill
22. Vacuum Breaker Tube
23. Vacuum Breaker Tube Nut
24. Spud Nut
25. Spud Friction Washer
26. Spud Sleeve
27. Spud Escutcheon
28. Tailpiece
29. Snap Ring
30. Tailpiece O-Ring
31. Locking Nut
32. Setscrew for Cast Wall Flange
33. Stop Body
34. Piston Seal
35. Piston
36. Stop Spring
37. Guide O-Ring
38. Piston Guide
39. Guide Holder
40. Adjusting Screw
41. Stop Cap
42. Snap Cap Screw Cover



Covers and Repair Kits	Product No.
Outside Cover - CP - Item 10	P6000-LL
Inside Cover - Item 11	P6000-L
Low Consumption Closet Kit - 1.6 gal. flush	P6000-ECR-WS1
Water Saving Closet Kit - 3.5 gal. flush	P6000-ECR-WS
Full Flow Closet Kit - 4.5 gal. flush	P6000-ECR-FF
Low Consumption Urinal Kit - 1.0 gal. flush	P6000-EUR-WS1
Water Saving Urinal Kit - 1.5 gal. flush	P6000-EUR-WS
Full Flow Urinal Kit - 3.0 gal. flush	P6000-EUR-FF

Repair Parts - Inside Parts	Product No.
Urinal Relief Valve - Item 12	P6000-EU13
Closet Relief Valve - Item 12	P6000-EC13

Aquaflush Rebuild Kits	Product No.
Closet and Urinal Rebuild Kits Include Items 4-9, 12, 13, 15-17, 26	P6000-ECR-WS-RK P6000-ECR-WS1-RK P6000-EUR-WS-RK P6000-EUR-WS1-RK

Handle Assembly and Repair Kits	Product No.
ADA Handle Assembly (Side) Includes Items 2-9	P6000-M-ADA
Handle Repair Kit (Side) Includes Items 4-9	P6000-MK
Handle Seal Includes Item 8	P6000-M9
Handle Gasket Includes Item 9	P6000-M10
Repair Kit for Front Operation - Exposed Includes Items 4-9	P6000-MHK
Handle Assembly (Front) Includes Items 2-9	P6000-MH

Control Stop Repair Kit and Parts	Product No.
Control Stop Repair Kit for 1" and 3/4" Includes Items 30-36	P6000-D-SD
Seal Seat for 1" and 3/4", Includes Item 30	P6000-D42
VP Control Stop Repair Kit for 1" and 3/4"	P6000-D-VP
Sweat Solder Connection with Cast Wall Flange	P6000-YB

Adjustable Tailpieces	Product No.
Adjustable Tailpiece for Standard Flush Valve Includes Items 24-26	P6000-J1
Tailpiece Coupling Assembly Includes Items 25-27	P6000-K
Tailpiece Locking Ring Includes Item 25	P6000-C30
Tailpiece O-Ring Includes Item 26	P6000-C31
Coupling Nut Includes Item 27	P6000-C32

Flush Connections and Spud Coupling Kits	Product No.
Flush Tube Assembly for Flush Valves Includes Items 15-19. Specify diameter and length.	P6000-A
Vacuum Breaker Repair Kit Includes Items 15-17	P6000-B
Spud Coupling Assembly Includes Items 20-23. Specify size.	P6000-H