

# AQUASPEC<sup>®</sup> FAUCETS

MODEL - Z83100 SERIES  
FLEX MOUNT WIDESPREAD



## TECHNICAL INFORMATION

---

**FLOW:** 2 GPM [7.6 L] PRESSURE COMPENSATING AERATOR \*  
**MAXIMUM PRESSURE:** 125 PSI  
**MAXIMUM TEMPERATURE:** 180 °F  
**HANDLE NUT TORQUE:** 15-20 FT - LBS.  
**CARTRIDGE STYLE:** QUARTER TURN CERAMIC DISK  
(CAN USE ZURN METERING CARTRIDGE)

\* OTHER AERATORS AVAILABLE BY REQUEST

---

## INSTALLATION INSTRUCTIONS

1. PLACE GASKET (ITEM #3D) ONTO SHANK OF BASE (ITEM #4). PLACE BASE THROUGH CENTER HOLE OF SINK AND SECURE TO SINK USING WASHER (ITEM #3E), LOCKWASHER (ITEM #3F) AND FLANGED MOUNTING NUT (ITEM #3G).
2. REMOVE BODY (ITEMS #7, #8, & #9) FROM PACKAGING AND PLACE WASHER (ITEM #3C) ONTO END FITTINGS, SCREW NUTS ALL THE WAY DOWN ON THREADS.
3. PLACE BODY INTO SINK FROM UNDERSIDE AND PLACE WASHER (ITEM #3B) AND RETAINING RING (ITEM #3A) ONTO SHANKS ABOVE SINK TOP.
4. TIGHTEN NUTS (ITEM #9A) TO SECURE ASSEMBLY TO SINK. **DO NOT OVERTIGHTEN.**
5. PLACE GASKET (ITEM #7A) BETWEEN TEE (ITEM #7D) & SHANK. SECURE TEE TO SHANK WITH NUT (ITEM #7C).
6. INSTALL SPOUT INTO BASE AND TIGHTEN NUT (SEE VIEWS FOR SWING/RIGID CONNECTION). INSTALL ESCUTCHEONS (ITEM #1) OVER END FITTINGS. SCREW HANDLES ONTO CARTRIDGE STEMS AND INSERT INDEX BUTTONS.
7. ATTACH LAVATORY SUPPLIES TO FAUCET USING COUPLING NUT (ITEM #10).
8. OPTIONAL - POP-UP (-P) / GRID STRAINER (-G) / HANDICAP OFFSET GRID DRAIN (-GH)  
INSTALL POP-UP OR GRID STRAINER IN SINK OUTLET AND PLUMB WASTE CONNECTION.
9. INSTALL AERATOR INTO FAUCET AND HAND TIGHTEN. IT MAY BE NECESSARY TO UNSCREW AND CLEAN AERATOR AT START-UP.
10. TURN WATER SUPPLY ON AND OPERATE FAUCET CHECKING FOR LEAKS.
11. IT MAY BE NECESSARY TO SHUT WATER OFF AND REMOVE CARTRIDGES TO CLEAN SUPPLY LINES. CARTRIDGES CAN BE REMOVED BY FIRST REMOVING THE HANDLES. COLOR INDEXES CAN BE REMOVED BY INSERTING A PIN INTO THE HOLE ON THE UNDERSIDE OF THE HANDLE. AFTER THE HANDLES HAVE BEEN REMOVED, UNSCREW ESCUTCHEONS (ITEM #1) AND REMOVE THE CARTRIDGE CAPS (ITEM #2). PULL UP ON THE CARTRIDGE. ZURN WILL SUPPLY HANDLE PORT PLUGS (ZURN PART #61094001) AT YOUR REQUEST.
12. REPLACE CARTRIDGES IN BODY AND HAND TIGHTEN CARTRIDGE CAPS. PLACE HANDLES ON THE CARTRIDGE STEM AND LOCATE THEM AS DESIRED. TIGHTEN CARTRIDGE CAPS.
13. REPLACE HANDLE SCREWS AND COLOR INDEX BUTTONS.

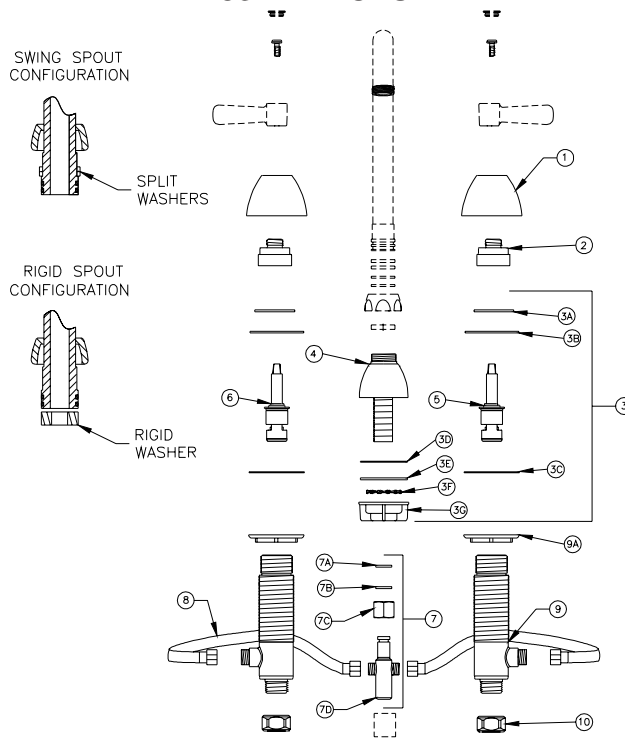
# MAINTENANCE

1. YOUR ZURN AQUASPEC FAUCET HAS A HIGHLY POLISHED NICKEL CHROME PLATED FINISH. CLEAN WITH SOAP AND WATER OR A MILD CLEANER WHICH IS SAFE FOR CHROME PLATING. DO NOT USE ACIDS OR TOILET BOWL CLEANER AS THEY WILL DAMAGE THE FINISH.
2. AQUASPEC FAUCETS CONTAIN CERAMIC DISK CARTRIDGES WHICH REQUIRE NO MAINTENANCE. TO REMOVE THE CARTRIDGE, SHUT THE WATER OFF, LOOSEN THE HANDLE NUTS AND PULL UP ON THE CARTRIDGE.

# REPLACEMENT PARTS

COLD WATER CARTRIDGE	59517003
HOT WATER CARTRIDGE	59517004
INDEX BUTTONS	G60500

## Z831A1 PICTURED



## Z83100 PARTS LIST

ITEM	QTY	ITEM	QTY
1 60078001	2	5 59517003	1
2 60077001	2	6 59517004	1
3 G61859	1	7 G65335	1
3A 60383002	2	7A 60455001	1
3B 60382001	2	7B 63982001	1
3C 60444001	2	7C 60145002	1
3D 60148002	1	7D 61283001	1
3E 65340001	1	8 60249332	2
3F 61613019	1	9 61273001	2
3G 59530003	1	9A 60445001	2
4 61276003	1	10 59532001	2

**AIR DELIGHTS, INC.**  
 9974 SW Arctic Dr  
 Beaverton, OR 97005  
 PHONE: 1-800-440-5556 FAX: 1-503-643-8442  
 www.airdelights.com



Form # CF169	Date: 10/12/05
C.N. No. 103193	Rev. E