

□ Installation □ Maintenance Instructions □ Replacement Parts

INSTALLATION INSTRUCTIONS

1. Shut off hot and cold water supplies.
2. Remove mounting nuts from shanks of faucet.
3. Place faucet with base plate, on lavatory sink. **In some installations, plumbers putty may be required to make a water tight seal between the faucet and the lavatory surface.**
4. From underneath sink, place mounting nuts on shanks and tighten to an appropriate torque to hold faucet in place.
5. If faucet includes pop-up or grid drain, refer to next page for installation instructions.
6. Connect water supplies to faucet shanks. If copper riser tubes are used, make connection with provided riser nuts. **CAUTION: care should be taken not to kink tubes when connecting to water supplies.** The hot water supply should be connected to the left shank (when facing the faucet), and the cold water supply should be connected to the right shank.
7. Remove aerator from faucet. Turn water supply on to flush system. Check for leaks above and below sink while operating faucet.
8. Turn faucet off and reinstall aerator.

MAINTENANCE INSTRUCTIONS

Your Zurn Sierra Series Faucet has a highly polished nickel chrome plated finish. Clean with soap and water or a mild cleaner which is safe for chrome plating. Do not use acids, harsh abrasive cleaners, polishes, or toilet bowl cleaner. Always use Zurn parts when performing routine maintenance. The use of non-Zurn parts will void your warranty.

This faucet contains ceramic disk cartridges which require no maintenance. However if cartridge removal is required perform the following.

1. Turn off water supply.
2. Remove index from top of each handle.
3. Using a screwdriver loosen screw that holds handle to cartridge.
4. Remove handles with bell shaped escutcheons.
5. Loosen and remove handle nuts. **Caution: Do not remove thin retaining nut under handle nut.**
6. Pull up on cartridges to remove.
7. Reassemble parts in the reverse order. Make sure cartridge is oriented properly when tightening handle nut.

REPLACEMENT PARTS

Cold Water Cartridge 59517001
Hot Water Cartridge 59517002



Z74500
4" Centerset Faucet



Z74600
4" Centerset Gooseneck

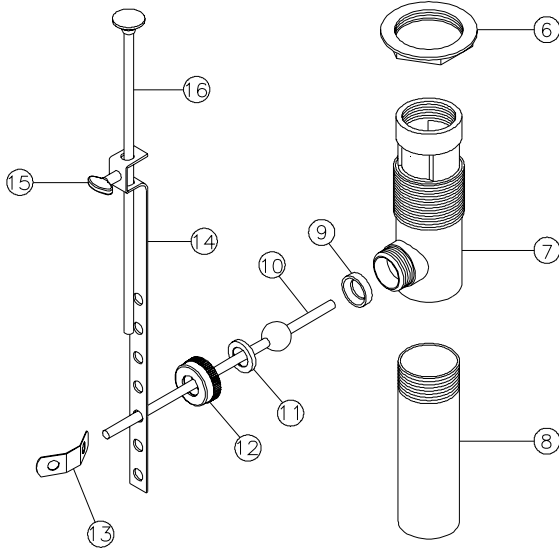


Z74700
8" Centerset Gooseneck



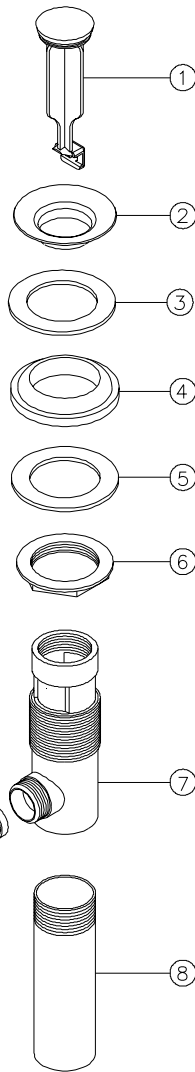
INSTALLATIONS INSTRUCTIONS

METALLIC POP-UP	
ITEM	DESCRIPTION
1	STOPPER
2	FLANGE
3	FLANGE GASKET
4	HOUSING GASKET
5	FIBER GASKET
6	NUT
7	BODY
8	TAILPIECE
9	SEAT
10	ROD AND BALL
11	GASKET
12	NUT
13	CLIP
14	STRAP
15	THUMBSCREW
16	LIFT ROD

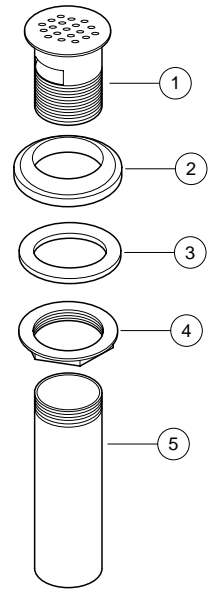


METAL POP-UP INSTALLATION

1. Remove the flange (2), then thread nut (6) and fiber gasket (5) down as far as possible. Place the housing gasket (4) on top of fiber gasket and nut.
2. Apply teflon tape to the threaded portion of tailpiece (8) and thread into body (7).
3. With flange gasket (3) on underside of the flange (2), push the pop-up assembly through the bottom of the lavatory sink. Screw the flange (2) onto the pop-up body (7).
4. Face the pivot hole towards the wall. Pull down on the pop-up assembly and tighten the nut (6), fiber gasket (5) and housing gasket (4). Do not let the pop-up assembly turn while tightening.
5. Position stopper (1) into body (7). Place gasket (11) into nut (12). Place nut (12) over rod and rod ball (10). Place seat (9) in rod ball hole. Place ball and rod assembly into body and through hole in end of stopper. Tighten nut (12) hand tight.
6. Place clip (13) over a hole in the metal strap (14). Insert the horizontal rod (10) through both the hole in the strap (14) and clip (13). You can bend the strap for travel adjustment.
7. Place the lift rod (16) down through the hole in the faucet and then the strap (14). Set the desired height of push rod and tighten the thumb screw (15).



GRID DRAIN ASSEMBLY	
ITEM	DESCRIPTION
1	BODY
2	HOUSING GASKET
3	FLAT HOUSING GASKET
4	NUT
5	TAILPIECE



GRID DRAIN INSTALLATION

1. Apply putty underneath the flange of body (1).
2. Apply teflon tape to the tailpiece (5) and thread into body (1).
3. Place grid drain assembly down through lavatory sink.
4. Install housing gasket (2), flat gasket (3) and nut (4). Tighten nut.
5. Remove excess putty from flange (1).

TEMP-GARD LIMITED WARRANTY

LIMITED WARRANTY: All goods sold hereunder are warranted to be free from defects in material and factory workmanship for a period of three (3) years from the date of purchase. We will replace at no cost goods that prove defective provided we are notified in writing of such defect and the goods are returned to Zurn Industries, Inc. prepaid at Falconer, New York, with evidence that they have been properly maintained and used in accordance with instructions. **We shall not be responsible for any labor charges or any loss, injury, or damages whatsoever, including incidental or consequential damages.** The sole and exclusive remedy shall be limited to the replacement of the defective goods. Before installation and use, the purchaser shall determine the suitability of the product for his intended use and the purchaser assumes all risk and liability whatever in connection therewith. Where permitted by law, **the implied warranty of merchantability is expressly excluded.** If the products sold hereunder are "consumer products," **the implied warranty of merchantability is limited to a period of three (3) years and shall be limited solely to the replacement of the defective goods.** All weights stated in our catalogs and lists are approximate and are not guaranteed.

ZURN INDUSTRIES, INC. ♦ COMMERCIAL BRASS OPERATION ♦ 2640 SOUTH WORK STREET ♦ FALCONER NY 14733

Phone: 1-716-665-1132 ♦ Fax: 1-716-665-1135 ♦ World Wide Web: www.zurn.com

In Canada: ZURN INDUSTRIES LIMITED ♦ 3544 Nashua Drive ♦ Mississauga, Ontario L4V1L2 ♦ Phone: 905/405-8272 Fax: 905/405-1292