



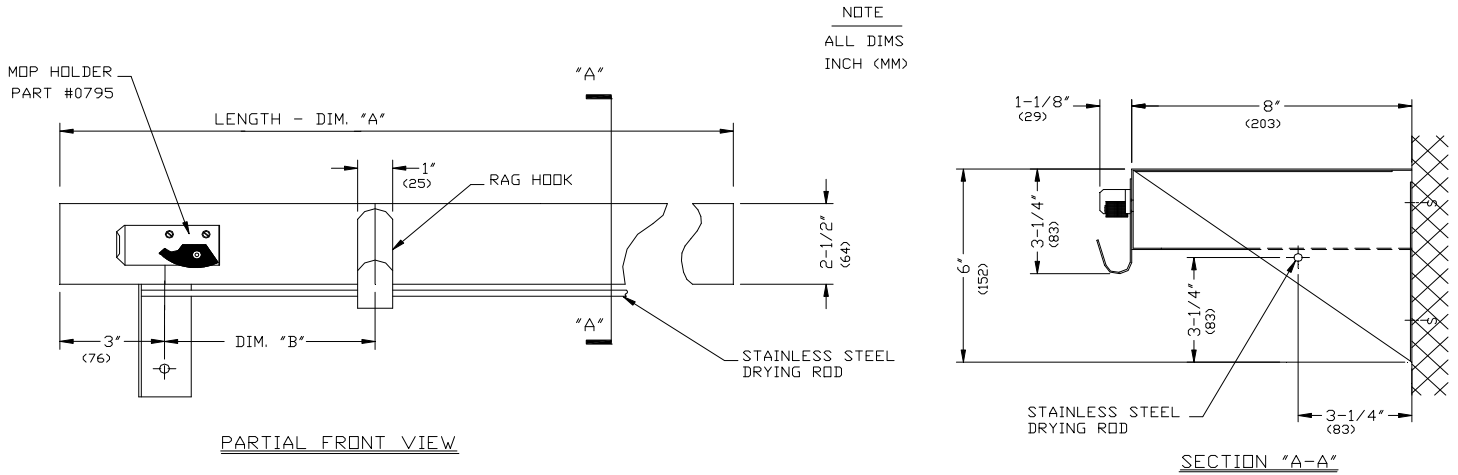
**AMERICAN SPECIALTIES, INC.**  
 441 Saw Mill River Road, NY 10701  
 (914) 476.9000 • (914) 476.0688  
 www.americanspecialties.com

**MODEL №: 1315**

**ISSUED: 01/87**

**REVISED: 18 APR 2012**

**UTILITY SHELF WITH MOP HOLDERS, DRYING ROD AND RAG HOOKS**



**SCHEDULE**

Model №	Length A" (mm)	Spacing B" (mm)	Mop Holder Quantity	Rag Hook Quantity
1315-3	30" (762)	6" (152)	3	2
1315-4	36" (914)	5" (127)	4	3
1315-6	48" (1219)	4-3/16" (106)	6	5

**SPECIFICATION**

Utility Shelf with Mop Holders, Drying Rod and Rag Hooks shall be 14 gauge and 18 gauge type 304 stainless steel, 18-8 alloy. Utility shelf shall have 2-1/2" (65) wide hemmed-in edge all around and length shall be as per schedule above. Mop-holders shall be provided at the face of shelf in quantity listed in schedule above. Mop holder brackets shall be plated steel and shall be ribbed for rigidity. Each mop holder shall have a pivoting spring loaded serrated rubber cam that shall hold round handles of 7/8" to 1-1/4" diameter (Ø22 to Ø32) wedged against ribbed clamp plate. A 3/8" diameter (Ø10) stainless steel drying rod shall be provided to run between the mounting bracket gussets. Mounting brackets shall be 16 gauge. All exposed surfaces shall have satin finish and be protected during shipment with a PVC film easily removable after installation.

Utility Shelf with Mop Holders, Drying Rod and Rag Hooks shall be Model № 1315-\_\_\_\_ (insert size code) fabricated by American Specialties, Inc., 441 Saw Mill River Road Yonkers, New York 10701-4913

**INSTALLATION**

Surface mount unit on wall or partition having clear wall space to floor using № 10 self tapping screws into suitable wall anchors or other prepared blocking (all by others) through holes provided in gusset brackets. For general utility mount rack 72" (1829) above finished floor (AFF) from top of shelf. For compliance with 2010 ADA Accessibility Standards, install unit so that top of rack is 48" (1219) maximum AFF if clear floor reach access is provided.

**OPERATION**

Mop or broom handle is pushed into grip-jaw of pivoting serrated rubber cam with upward motion until it seats behind rib on clamp plate. Spring holds cam against handle. Gravity holds mop clamped in position. General dry janitorial supplies may be stored on shelf. Wet or dry cleaning rags may be hung on hooks as required. Wet cloth items may be hung on drying rod to drip into floor basin (by others).