



T&S BRASS AND BRONZE WORKS, INC.

2 Saddleback Cove / P.O. Box 1088
Travelers Rest, SC 29690

Model No.

EC-3122

Item No.

Travelers Rest, SC: 800-476-4103 • Simi Valley, CA: 800-423-0150 • Fax: 864-834-3518 • www.tsbrass.com



ADA Compliant



This Space for Architect/Engineer Approval

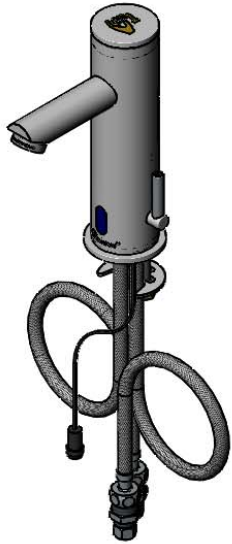
Job Name _____ Date _____

Model Specified _____ Quantity _____

Customer/Wholesaler _____

Contractor _____

Architect/Engineer _____



Ø 2 9/16"
[65mm]



2.2 GPM [8.3 L/min]
Vandal Resistant
Aerator

Temperature
Mixing Handle

DC Powered w/
4 "AA" Batteries
Inside Housing

Internal Above
Deck Electronics
w/ Flow Control
Setting Switches

Mounting
Surface

4 5/16"
[109mm]

5 3/4"
[146mm]

Cold

Hot

8 5/16"
[211mm]

1 1/2"
[38mm]
Maximum
Thickness

19" [486mm] Long Flexible Stainless
Steel Supply Hoses w/ 1/2" NPSM
Swivel Ends & Filter Washers

Check Valve Adapters w/
3/8" Compression (9/16-24 UN) Inlets
& Check Valves

Optional 100-240 VAC Adapter
w/ 144" [3658mm] Long Power Cord
w/ 2 Terminal Plugs (Included)

Rough-In Requirement:
Ø 1 1/2" [38mm] Hole

Product Specifications:

Chrome Plated Brass Above Deck Electronics Faucet:
Single Hole Deck Mount, 2.2 GPM VR Aerator, Above Deck
Temperature Control, Battery or AC Adapter Powered, Stainless
Steel Flexible Supply Hoses & 3/8" Compression Inlets

Product Compliance:

ASME A112.18.1 / CSA B125.1
NSF 61 - Section 9
NSF 372 (Low Lead Content)
ANSI A117.1 (ADA)
UL 1951



T&S BRASS AND BRONZE WORKS, INC.

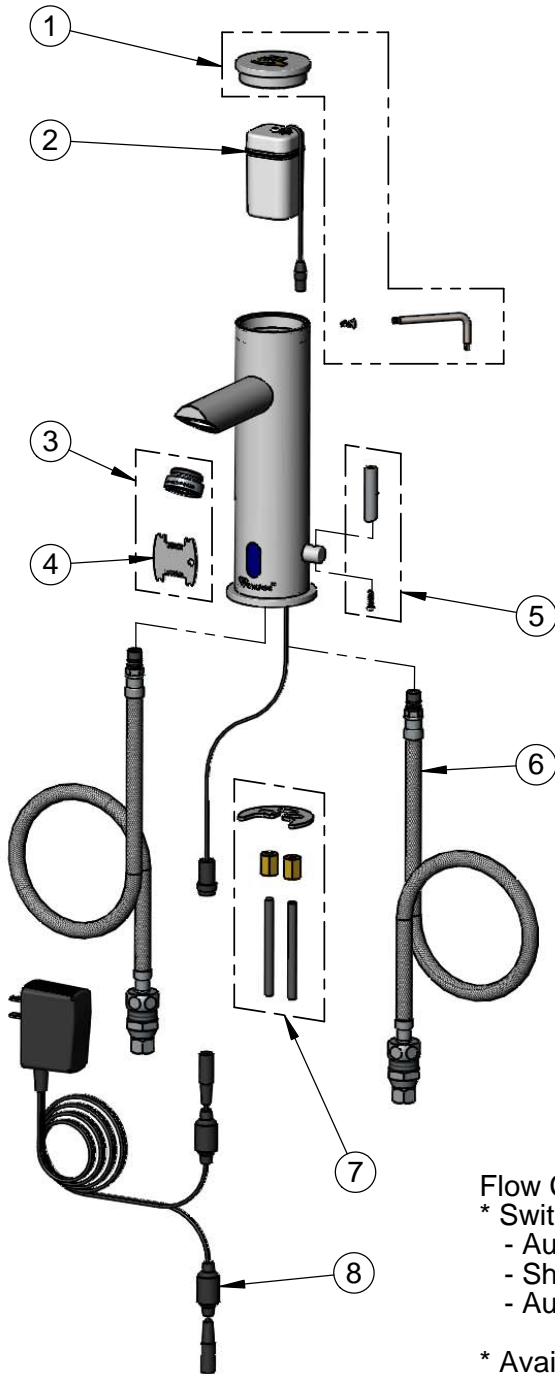
2 Saddleback Cove / P.O. Box 1088
Travelers Rest, SC 29690

Model No.

EC-3122

Item No.

Travelers Rest, SC: 800-476-4103 • Simi Valley, CA: 800-423-0150 • Fax: 864-834-3518 • www.tsbrass.com



ITEM NO.	SALES NO.	DESCRIPTION
1	018160-40	Cap, Screw & Wrench Kit
2	018227-45	Battery Holder
3	B-0199-09	2.2 GPM VR Aerator
4	015425-45	Vandal Resistant Key
5	018230-45	Lever Handle w/ Screw
6	018232-45	Flex Hose w/ Filter Washer & Check Valve Adapter Asm.
7	018233-45	Mounting Hardware Kit
8	5EF-0002	A/C Transformer



A Maximum of (8) ChekPoint Faucets can be Powered by EC-HARDWIRE ChekPoint Hardwire ACTransformer when Connected Using EC-ADEWIRE Cables. (Both Sold Separately)

Flow Control Switches are Located Beneath the Cap.

* Switches are Set to DEFAULT Position:

- Auto Time Out = 15 Seconds
- Shut Off Delay = 1 Second
- Auto Flush = OFF

* Available Water Flow Control Selections:

- Auto Time Out: 15 sec, 30 sec, 45 sec, 60 sec, 3 min, 20 min
- Shut Off Delay: 1 sec, 10 sec, 15 sec, 30 sec
- Auto Flush (30 Seconds After Every 12 Inactive Hours): ON or OFF

Product Specifications:

Chrome Plated Brass Above Deck Electronics Faucet:
Single Hole Deck Mount, 2.2 GPM VR Aerator, Above Deck
Temperature Control, Battery or AC Adapter Powered, Stainless
Steel Flexible Supply Hoses & 3/8" Compression Inlets

Product Compliance:

ASME A112.18.1 / CSA B125.1
NSF 61 - Section 9
NSF 372 (Low Lead Content)
ANSI A117.1 (ADA)
UL 1951



T&S BRASS AND BRONZE WORKS, INC.

2 Saddleback Cove / P.O. Box 1088
Travelers Rest, SC 29690

Model No.

EC-3122-4DP

Item No.

Travelers Rest, SC: 800-476-4103 • Simi Valley, CA: 800-423-0150 • Fax: 864-834-3518 • www.tsbrass.com



ADA Compliant



This Space for Architect/Engineer Approval

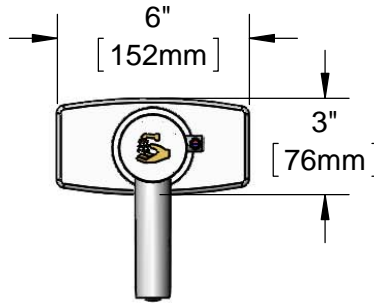
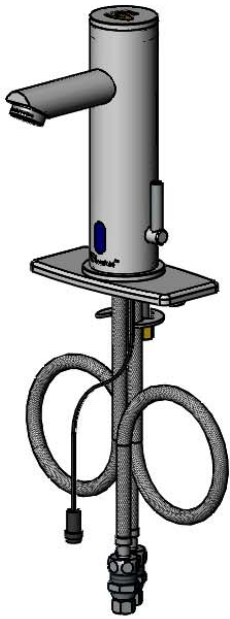
Job Name _____ Date _____

Model Specified _____ Quantity _____

Customer/Wholesaler _____

Contractor _____

Architect/Engineer _____



2.2 GPM [8.3 L/min]
Vandal Resistant
Aerator

DC Powered w/
4 "AA" Batteries
Inside Housing

Internal Above
Deck Electronics
w/ Flow Control
Setting Switches

Temperature
Mixing Handle

Mounting
Surface

4 5/16"
[109mm]

6 1/16"
[154mm]

1 1/4"
[32mm]
Maximum
Thickness

Cold

Hot

8 5/8"
[219mm]

19" [486mm] Long Flexible Stainless
Steel Supply Hoses w/ 1/2" NPSM
Swivel Ends & Filter Washers

Check Valve Adapters w/
3/8" Compression (9/16-24 UN) Inlets
& Check Valves

Optional 100-240 VAC Adapter w/
144" [3658mm] Long Power Cord
& 2 Terminal Plugs (Included)

Rough-In Requirement:

Ø 1 1/2" [38mm] Center Hole

(2) Ø 1 1/8 [29mm] Side Holes @ 4" [102mm] c/c

Product Specifications:

Chrome Plated Brass Above Deck Electronics Faucet, Single Hole
Deck Mount w/ 4" c/c Deck Plate, 2.2 GPM VR Aerator, Above
Deck Temperature Control, Battery or AC Adapter Powered,
Stainless Steel Flexible Supply Hoses & 3/8" Compression Inlets

Product Compliance:

ASME A112.18.1 / CSA B125.1
NSF 61 - Section 9
NSF 372 (Low Lead Content)
ANSI A117.1 (ADA)
UL 1951



T&S BRASS AND BRONZE WORKS, INC.

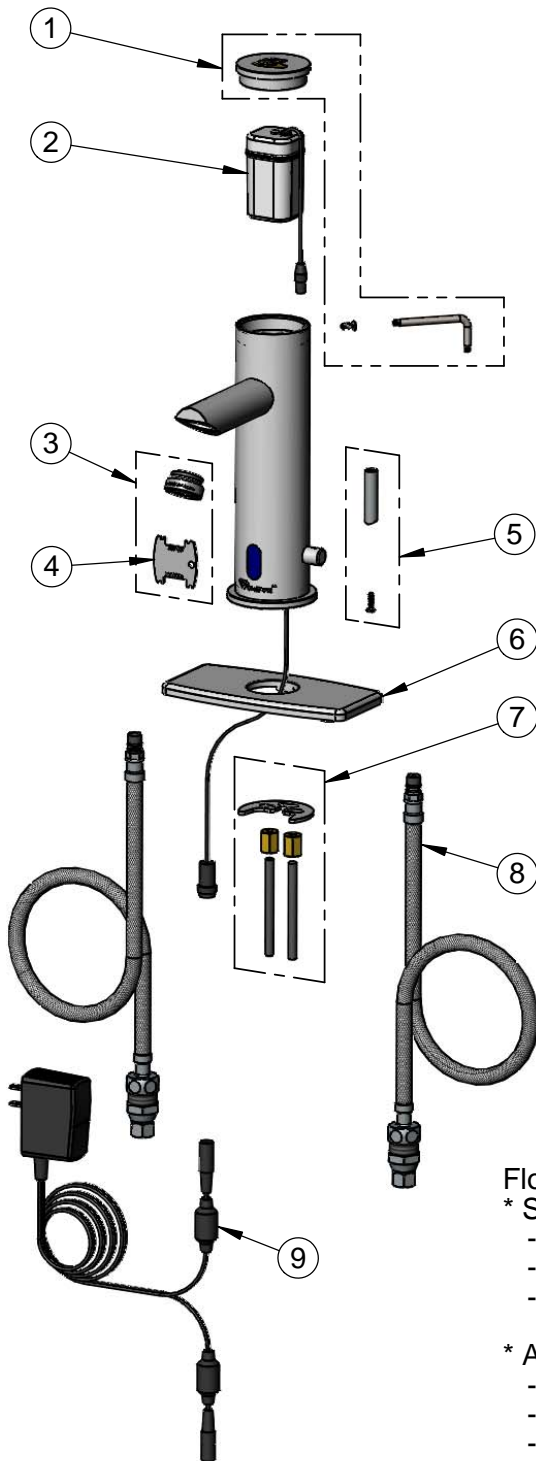
2 Saddleback Cove / P.O. Box 1088
Travelers Rest, SC 29690

Model No.

EC-3122-4DP

Item No.

Travelers Rest, SC: 800-476-4103 • Simi Valley, CA: 800-423-0150 • Fax: 864-834-3518 • www.tsbrass.com



ITEM NO.	SALES NO.	DESCRIPTION
1	018160-40	Cap, Screw & Wrench Kit
2	018227-45	Battery Holder
3	B-0199-09	2.2 GPM VR Aerator
4	015425-45	Vandal Resistant Key
5	018230-45	Lever Handle w/ Screw
6	018282-40	4" Forged Deck Plate, ϕ 1 1/2" Hole
7	018233-45	Mounting Hardware Kit
8	018232-45	Flex Hose w/ Filter Washer & Check Valve Adapter Asm.
9	5EF-0002	AC Transformer



A Maximum of (8) ChekPoint Faucets can be Powered by EC-HARDWIRE ChekPoint Hardwire ACTransformer when Connected Using EC-ADEWIRE Cables. (Both Sold Separately)

Flow Control Switches are Located Beneath the Cap.

* Switches are Set to DEFAULT Position:

- Auto Time Out = 15 Seconds
- Shut Off Delay = 1 Second
- Auto Flush = OFF

* Available Water Flow Control Selections:

- Auto Time Out: 15 sec, 30 sec, 45 sec, 60 sec, 3 min, 20 min
- Shut Off Delay: 1 sec, 10 sec, 15 sec, 30 sec
- Auto Flush (30 Seconds After Every 12 Inactive Hours): ON or OFF

Product Specifications:

Chrome Plated Brass Above Deck Electronics Faucet, Single Hole
Deck Mount w/ 4" c/c Deck Plate, 2.2 GPM VR Aerator, Above
Deck Temperature Control, Battery or AC Adapter Powered,
Stainless Steel Flexible Supply Hoses & 3/8" Compression Inlets

Product Compliance:

ASME A112.18.1 / CSA B125.1
NSF 61 - Section 9
NSF 372 (Low Lead Content)
ANSI A117.1 (ADA)
UL 1951



T&S BRASS AND BRONZE WORKS, INC.

2 Saddleback Cove / P.O. Box 1088
Travelers Rest, SC 29690

Model No.

EC-3122-8DP

Item No.

Travelers Rest, SC: 800-476-4103 • Simi Valley, CA: 800-423-0150 • Fax: 864-834-3518 • www.tsbrass.com



ADA Compliant



This Space for Architect/Engineer Approval

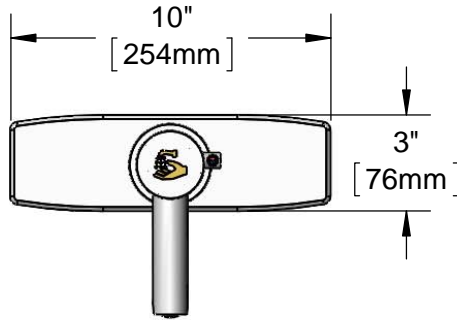
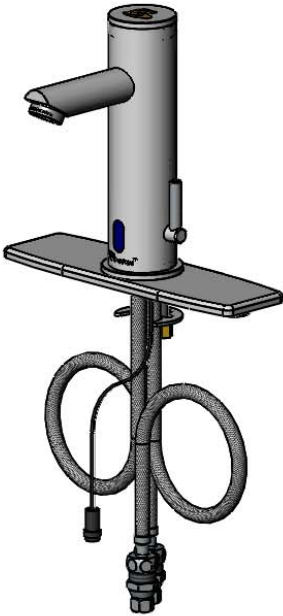
Job Name _____ Date _____

Model Specified _____ Quantity _____

Customer/Wholesaler _____

Contractor _____

Architect/Engineer _____



DC Powered w/
4 "AA" Batteries
Inside Housing

Internal Above
Deck Electronics
w/ Flow Control
Setting Switches

2.2 GPM [8.3 L/min]
Vandal Resistant
Aerator

Temperature
Mixing Handle

Mounting
Surface

4 5/16"
[109mm]

6 1/16"
[154mm]

Cold

Hot

8 5/8"
[219mm]

1 1/4"
[32mm]
Maximum
Thickness

19" [486mm] Long Flexible Stainless
Steel Supply Hoses w/1/2" NPSM
Swivel Ends & Filter Washers

Check Valve Adapters w/
3/8" Compression (9/16-24 UN) Inlets
& Check Valves

Optional 100-240 VAC Adapter w/
144" [3658mm] Long Power Cord &
2 Terminal Plugs (Included)

Rough-In:

Ø 1 1/2" [38mm] Center Hole

(2) Ø 1 1/8" [29mm] Side Holes @ 8" [203mm] c/c

Product Specifications:

Chrome Plated Brass Above Deck Electronics Faucet, Single Hole
Deck Mount w/ 8" c/c Deck Plate, 2.2 GPM VR Aerator, Above
Deck Temperature Control, Battery or AC Adapter Powered,
Stainless Steel Flexible Supply Hoses & 3/8" Compression Inlets

Product Compliance:

ASME A112.18.1 / CSA B125.1
NSF 61 - Section 9
NSF 372 (Low Lead Content)
ANSI A117.1 (ADA)
UL 1951



T&S BRASS AND BRONZE WORKS, INC.

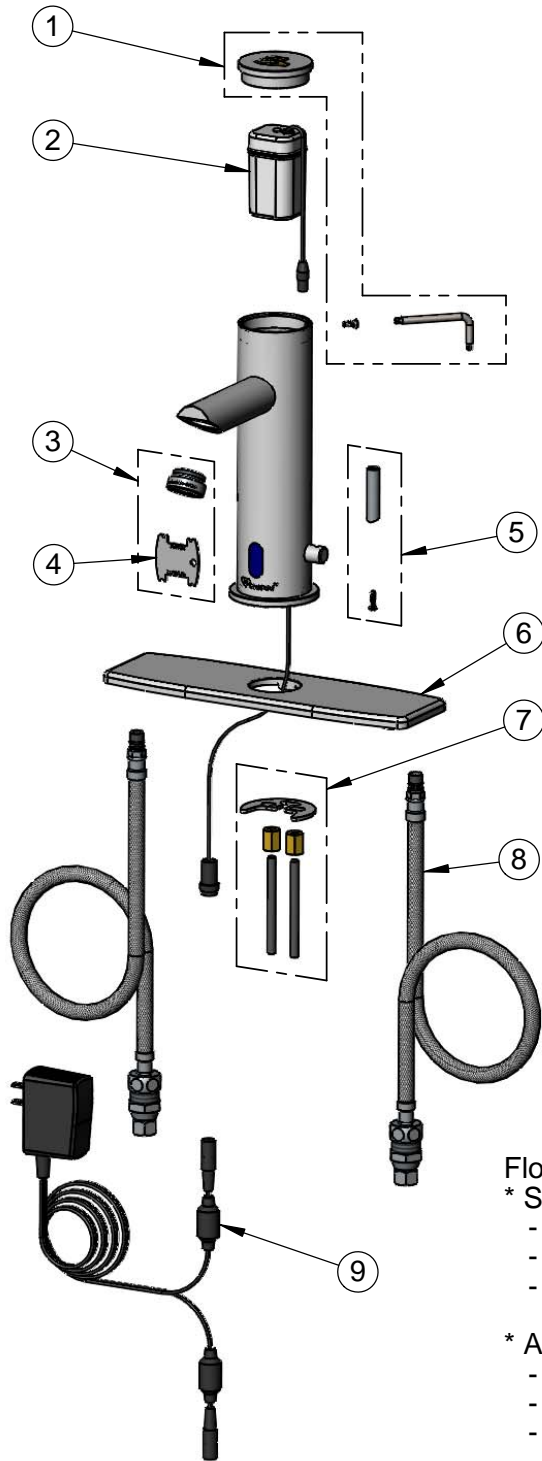
2 Saddleback Cove / P.O. Box 1088
Travelers Rest, SC 29690

Model No.

EC-3122-8DP

Item No.

Travelers Rest, SC: 800-476-4103 • Simi Valley, CA: 800-423-0150 • Fax: 864-834-3518 • www.tsbrass.com



ITEM NO.	SALES NO.	DESCRIPTION
1	018160-40	Cap, Screw & Wrench Kit
2	018227-45	Battery Holder
3	B-0199-09	2.2 GPM VR Aerator
4	015425-45	Vandal Resistant Key
5	018230-45	Lever Handle w/ Screw
6	018507-40	8" Forged Deck Plate
7	018233-45	Mounting Hardware Kit
8	018232-45	Flex Hose w/ Filter Washer & Check Valve Adapter Asm.
9	5EF-0002	AC Transformer



A Maximum of (8) ChekPoint Faucets can be Powered by EC-HARDWIRE ChekPoint Hardwire ACTransformer when Connected Using EC-ADEWIRE Cables. (Both Sold Separately)

Flow Control Switches are Located Beneath the Cap.

* Switches are Set to DEFAULT Position:

- Auto Time Out = 15 Seconds
- Shut Off Delay = 1 Second
- Auto Flush = OFF

* Available Water Flow Control Selections:

- Auto Time Out: 15 sec, 30 sec, 45 sec, 60 sec, 3 min, 20 min
- Shut Off Delay: 1 sec, 10 sec, 15 sec, 30 sec
- Auto Flush (30 Seconds After Every 12 Inactive Hours): ON or OFF

Product Specifications:

Chrome Plated Brass Above Deck Electronics Faucet, Single Hole Deck Mount w/ 8" c/c Deck Plate, 2.2 GPM VR Aerator, Above Deck Temperature Control, Battery or AC Adapter Powered, Stainless Steel Flexible Supply Hoses & 3/8" Compression Inlets

Product Compliance:

ASME A112.18.1 / CSA B125.1
NSF 61 - Section 9
NSF 372 (Low Lead Content)
ANSI A117.1 (ADA)
UL 1951



T&S BRASS AND BRONZE WORKS, INC.

2 Saddleback Cove / P.O. Box 1088
Travelers Rest, SC 29690

Model No.

EC-3122-HG

Item No.

Travelers Rest, SC: 800-476-4103 • Simi Valley, CA: 800-423-0150 • Fax: 864-834-3518 • www.tsbrass.com



ADA Compliant



This Space for Architect/Engineer Approval

Job Name _____ Date _____

Model Specified _____ Quantity _____

Customer/Wholesaler _____

Contractor _____

Architect/Engineer _____

Ø 2 9/16"
[65mm]



Optional DC Power
w/ 4 "AA" Batteries
Inside Housing

Internal Above
Deck Electronics
w/ Flow Control
Setting Switches

19" [486mm] Long
Flexible Stainless
Steel Supply Hoses w/
1/2" Swivel Ends & Filter
Washers

2.2 GPM [8.3 L/min]
Vandal Resistant
Aerator

Temperature
Mixing Handle

Mounting
Surface

4 5/16"
[109mm]

5 3/4"
[146mm]

Cold

Hot

8 5/16"
[211mm]

1 1/2"
[38mm]
Maximum
Thickness

Connection to
Power Supply



Check Valve Adapters
w/ 3/8" Compression
(9/16-24 UN) Inlets &
Check Valves

100-240 VAC Adapter
w/ 144" [3658mm] Long
Power Cord & 2 Terminal
Plugs (Included)

Hydro-Generator
Power Supply.
No "AA" Batteries or
AC Adapter Needed
to Supply Power to
Faucet

Connect Cold Supply Line
Check Valve Adapter to
Hydro-Generator
1/2" NPSM Swivel

Rough-In Requirement:
Ø 1 1/2" [38mm] Hole

Product Specifications:

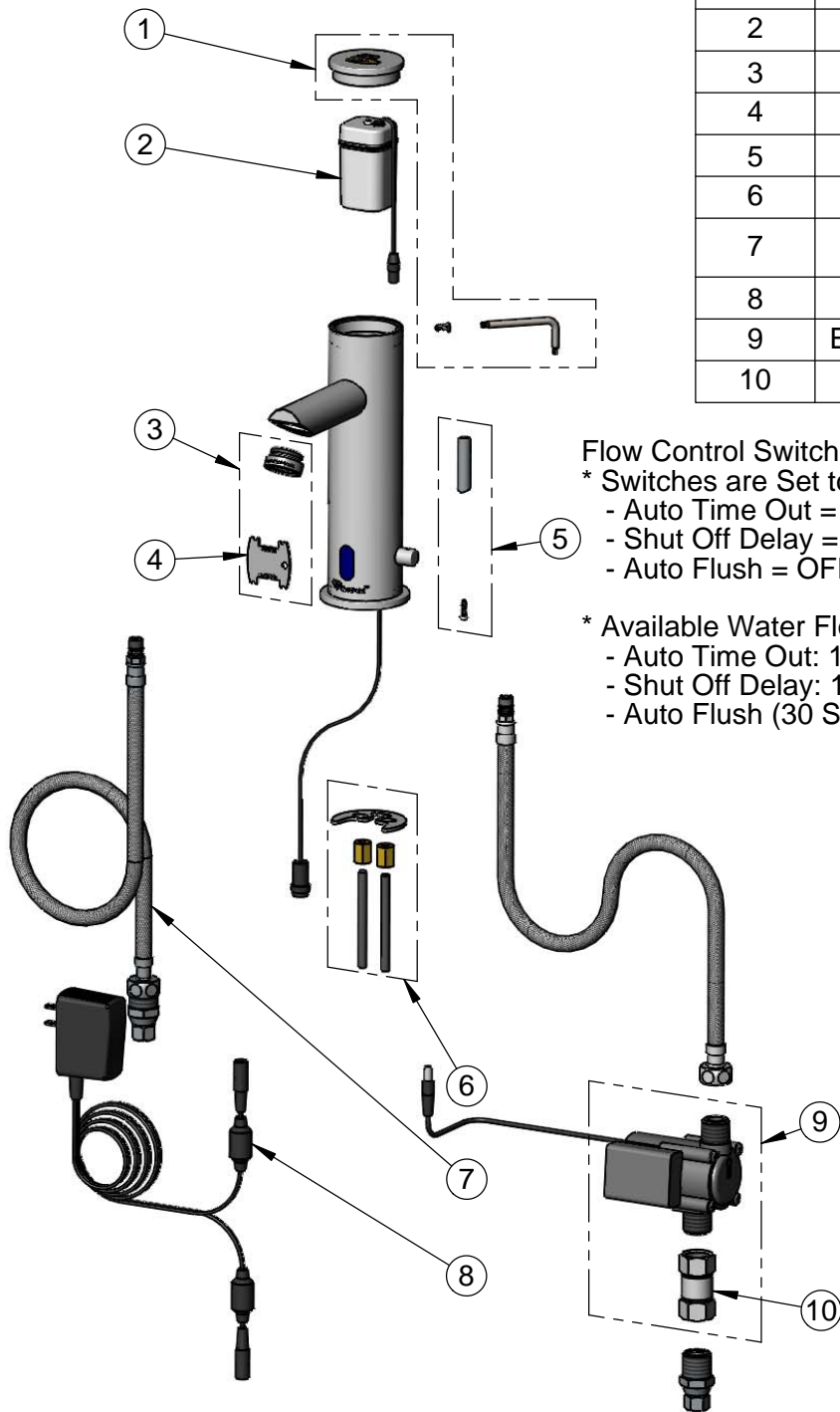
Chrome Plated Brass Above Deck Electronics Faucet, Single Hole Deck Mount, 2.2 GPM VR Aerator, Above Deck Temperature Control, Hydro-Generator Powered, Stainless Steel Flexible Supply Hoses & 3/8" Compression Inlets

Product Compliance:

ASME A112.18.1 / CSA B125.1
NSF 61 - Section 9
NSF 372 (Low Lead Content)
ANSI A117.1 (ADA)
UL 1951

Travelers Rest, SC: 800-476-4103 • Simi Valley, CA: 800-423-0150 • Fax: 864-834-3518 • www.tsbrass.com

ITEM NO.	SALES NO.	DESCRIPTION
1	018160-40	Cap, Screw & Wrench Kit
2	018227-45	Battery Holder
3	B-0199-09	2.2 GPM VR Aerator
4	015425-45	Vandal Resistant Key
5	018230-45	Lever Handle w/ Screw
6	018233-45	Mounting Hardware Kit
7	018232-45	Flex Hose w/ Filter Washer & Check Valve Adapter Asm.
8	5EF-0002	AC Transformer
9	EC-HYDROGEN	HydroGenerator Power Supply
10	017506-45	1/2" NPSM Swivel Coupling



Flow Control Switches are Located Beneath the Cap.

* Switches are Set to DEFAULT Position:

- Auto Time Out = 15 Seconds
- Shut Off Delay = 1 Second
- Auto Flush = OFF

* Available Water Flow Control Selections:

- Auto Time Out: 15 sec, 30 sec, 45 sec, 60 sec, 3 min, 20 min
- Shut Off Delay: 1 sec, 10 sec, 15 sec, 30 sec
- Auto Flush (30 Seconds After Every 12 Inactive Hours): ON or OFF

Product Specifications:

Chrome Plated Brass Above Deck Electronics Faucet, Single Hole Deck Mount, 2.2 GPM VR Aerator, Above Deck Temperature Control, Hydro-Generator Powered, Stainless Steel Flexible Supply Hoses & 3/8" Compression Inlets

Product Compliance:

ASME A112.18.1 / CSA B125.1
NSF 61 - Section 9
NSF 372 (Low Lead Content)
ANSI A117.1 (ADA)
UL 1951



T&S BRASS AND BRONZE WORKS, INC.

2 Saddleback Cove / P.O. Box 1088
Travelers Rest, SC 29690

Model No.

EC-3122-VF05

Item No.

Travelers Rest, SC: 800-476-4103 • Simi Valley, CA: 800-423-0150 • Fax: 864-834-3518 • www.tsbrass.com



ADA Compliant



This Space for Architect/Engineer Approval

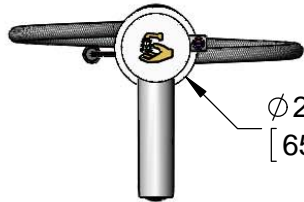
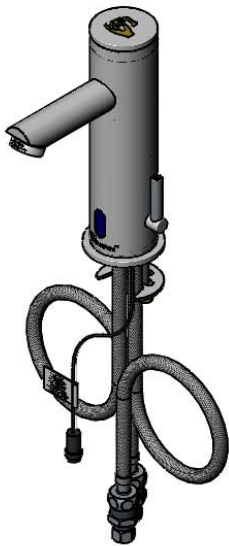
Job Name _____ Date _____

Model Specified _____ Quantity _____

Customer/Wholesaler _____

Contractor _____

Architect/Engineer _____



Ø 2 9/16"
[65mm]

B-0199-09-N05
VR 0.5 GPM Non-Aerated
Spray Device

DC Powered w/
4 "AA" Batteries
Inside Housing

Temperature
Mixing Handle

Internal Above
Deck Electronics
w/ Flow Control
Setting Switches

Mounting
Surface

4 5/16"
[109mm]

5 3/4"
[146mm]

Cold

8 5/16"
[211mm]

Hot

1 1/2"
[38mm]
Maximum
Thickness

19" [486mm] Flexible Stainless
Steel Supply Hoses w/1/2" NPSM
Swivel Ends & Filter Washers

Check Valve Adapters w/
3/8" Compression (9/16-24 UN) Inlets
& Check Valves

Optional 100-240 VAC Adapter w/
144" [3658mm] Power Cord &
2 Terminal Plugs (Included)

Rough-In Requirement:
Ø 1 1/2" [38mm] Hole

Product Specifications:

Chrome Plated Brass Above Deck Electronics Faucet, Single Hole Deck Mount, VR 0.5 GPM Non-Aerated Spray Device, Above Deck Temperature Control, Battery or AC Adapter Powered, Stainless Steel Flexible Supply Hoses & 3/8" Comp. Inlets

Product Compliance:

ASME A112.18.1 / CSA B125.1
NSF 61 - Section 9
NSF 372 (Low Lead Content)
ANSI A117.1 (ADA)
UL 1951



T&S BRASS AND BRONZE WORKS, INC.

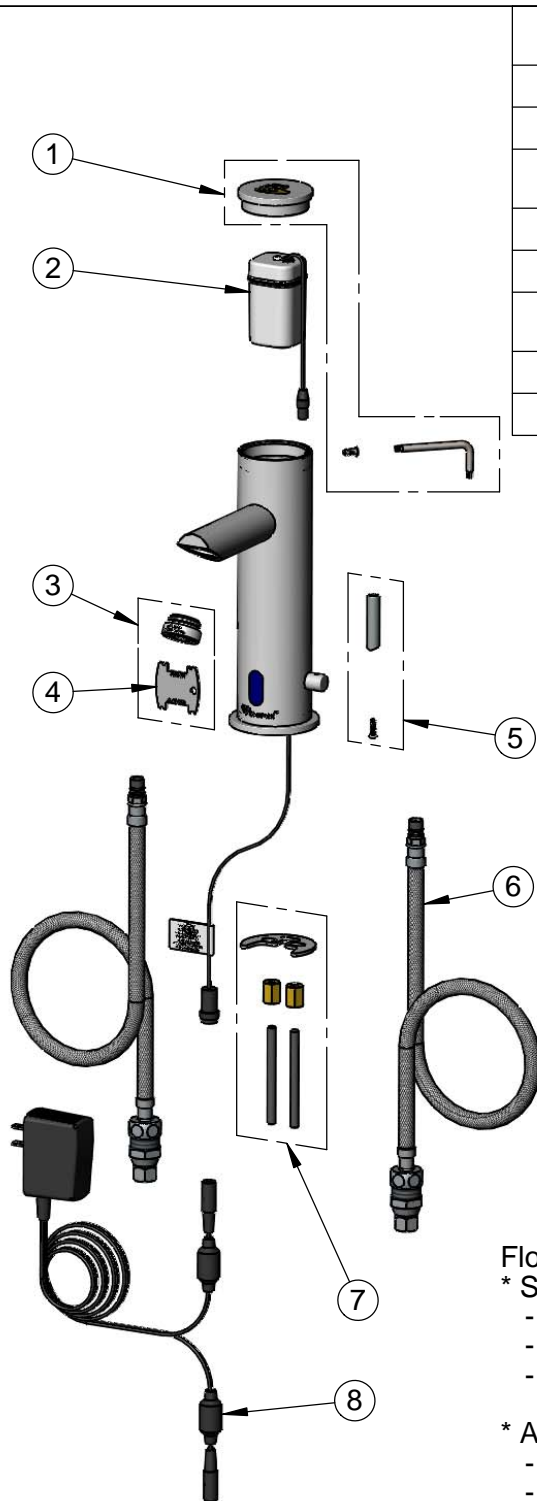
2 Saddleback Cove / P.O. Box 1088
Travelers Rest, SC 29690

Model No.

EC-3122-VF05

Item No.

Travelers Rest, SC: 800-476-4103 • Simi Valley, CA: 800-423-0150 • Fax: 864-834-3518 • www.tsbrass.com



ITEM NO.	SALES NO.	DESCRIPTION
1	018160-40	Cap, Screw & Wrench Kit
2	018227-45	Battery Holder
3	B-0199-09-N05	VR 0.5 GPM Non-Aerated Spray Device, 15/16-27 UN Male w/ Key
4	015425-45	VR Aerator Key
5	018230-45	Lever Handle w/ Screw
6	018232-45	Flexible Stainless Steel Hose w/ Filter Washer & Check Valve Adapter
7	018233-45	Mounting Hardware Kit
8	5EF-0002	A/C Transformer



A Maximum of (8) ChekPoint Faucets can be Powered by EC-HARDWIRE ChekPoint Hardwire ACTransformer when Connected Using EC-ADEWIRE Cables. (Both Sold Separately)

Flow Control Switches are Located Beneath the Cap.

* Switches are Set to DEFAULT Position:

- Auto Time Out = 15 Seconds
- Shut Off Delay = 1 Second
- Auto Flush = OFF

* Available Water Flow Control Selections:

- Auto Time Out: 15 sec, 30 sec, 45 sec, 60 sec, 3 min, 20 min
- Shut Off Delay: 1 sec, 10 sec, 15 sec, 30 sec
- Auto Flush (30 Seconds After Every 12 Inactive Hours): ON or OFF

Product Specifications:

Chrome Plated Brass Above Deck Electronics Faucet, Single Hole Deck Mount, VR 0.5 GPM Non-Aerated Spray Device, Above Deck Temperature Control, Battery or AC Adapter Powered, Stainless Steel Flexible Supply Hoses & 3/8" Comp. Inlets

Product Compliance:

ASME A112.18.1 / CSA B125.1
NSF 61 - Section 9
NSF 372 (Low Lead Content)
ANSI A117.1 (ADA)
UL 1951