



T&S BRASS AND BRONZE WORKS, INC.

2 Saddleback Cove / P.O. Box 1088
Travelers Rest, SC 29690

Model No.

B-0455

Item No.

Travelers Rest, SC: 800-476-4103 • Simi Valley, CA: 800-423-0150 • Fax: 864-834-3518 • www.tsbrass.com

This Space for Architect/Engineer Approval

Job Name _____ Date _____

Model Specified _____ Quantity _____

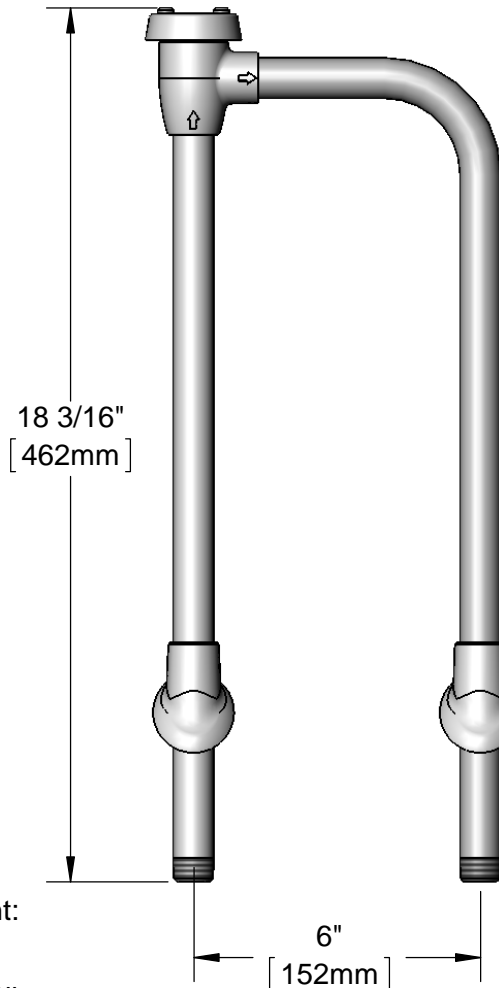
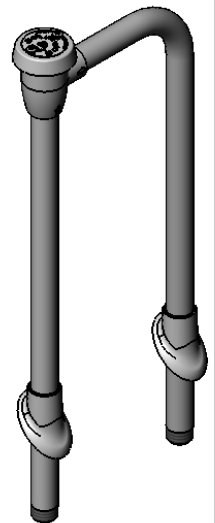
Customer/Wholesaler _____

Contractor _____

Architect/Engineer _____



B-0969
1/2" NPT
Vacuum
Breaker



18 3/16"
[462mm]

Set Screw

1/2" NPT
Male Thread
TYP

Note:
Pipe Must be Held
Rigid Under Sink by
Connection Fittings,
Brace, Etc.

Rough-In Requirement:
(2) Ø1 1/4" [32mm]
Hole in Center of 45°
Mounting Surface to Slip
1/2" Pipe Through

Product Specifications:

1/2" NPT Vacuum Breaker Unit, 6" c/c

Product Compliance:

ASME A112.18.1 / CSA B125.1
NSF 61 - Section 9
NSF 372 (Low Lead Content)
ASSE 1001



T&S BRASS AND BRONZE WORKS, INC.

2 SADDLEBACK COVE / P.O. BOX 1088 / TRAVELERS REST, SC 29690

PHONE 800-476-4103

FAX 864-834-3518



REG.#A2601
ISO #9002

Model No.

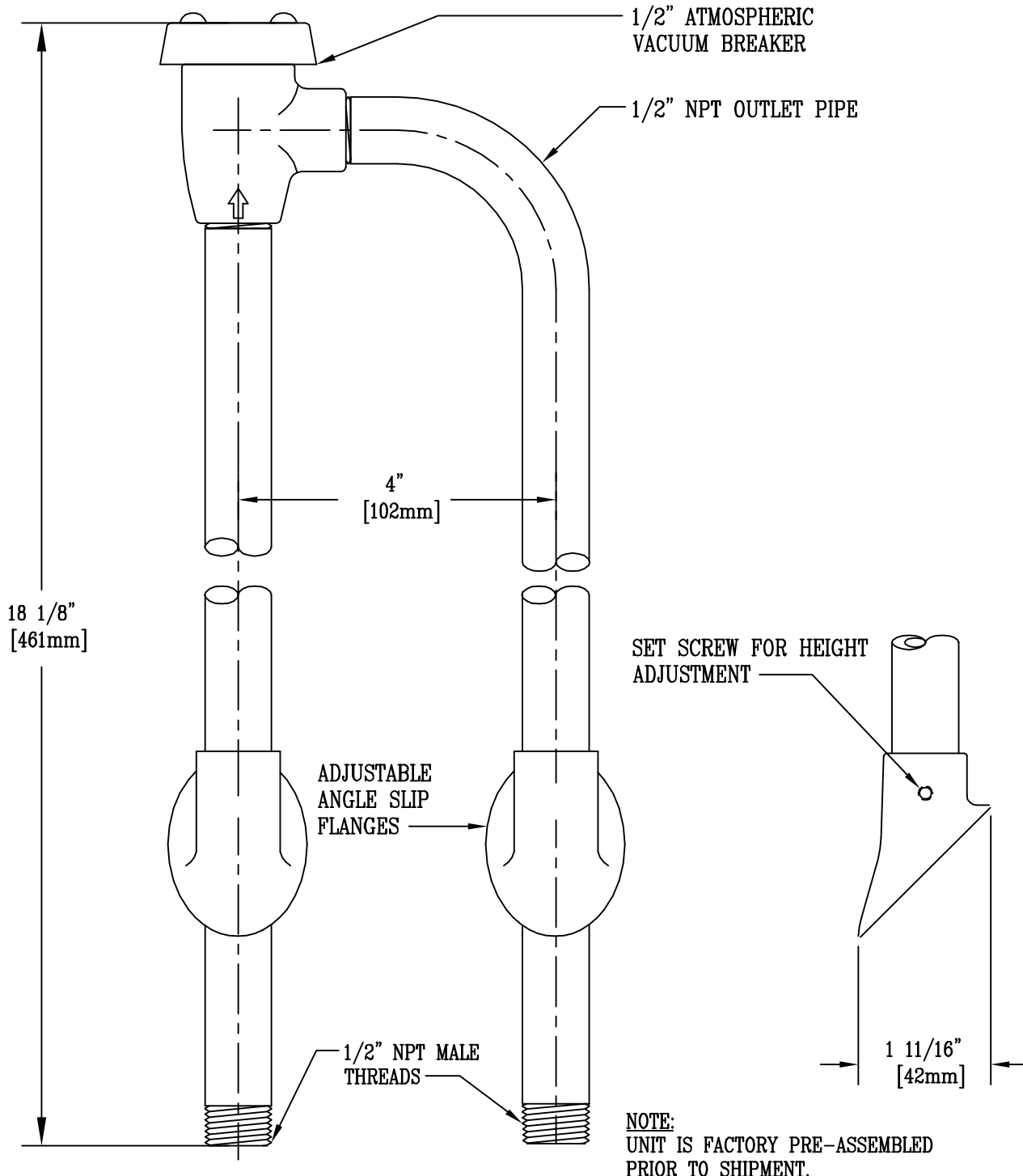
B-0455-04

Item No.:

Job Name:

Architect/Engineer Approval:

Notes:



Product Description:

B-0455 w/ 4" c/c MOUNTING
FACTORY PRE-ASSEMBLED

Drawn:

WJS

Approved

MVW

Checked

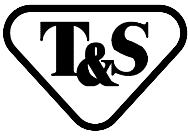
JKD

Scale:

1 : 2

Date:

5/1/02



T&S BRASS AND BRONZE WORKS, INC.

2 SADDLEBACK COVE / P.O. BOX 1088 / TRAVELERS REST, SC 29690

PHONE 800-476-4103

FAX 864-834-3518



REG. #A2601
ISO #9002

Model No.

B-0456

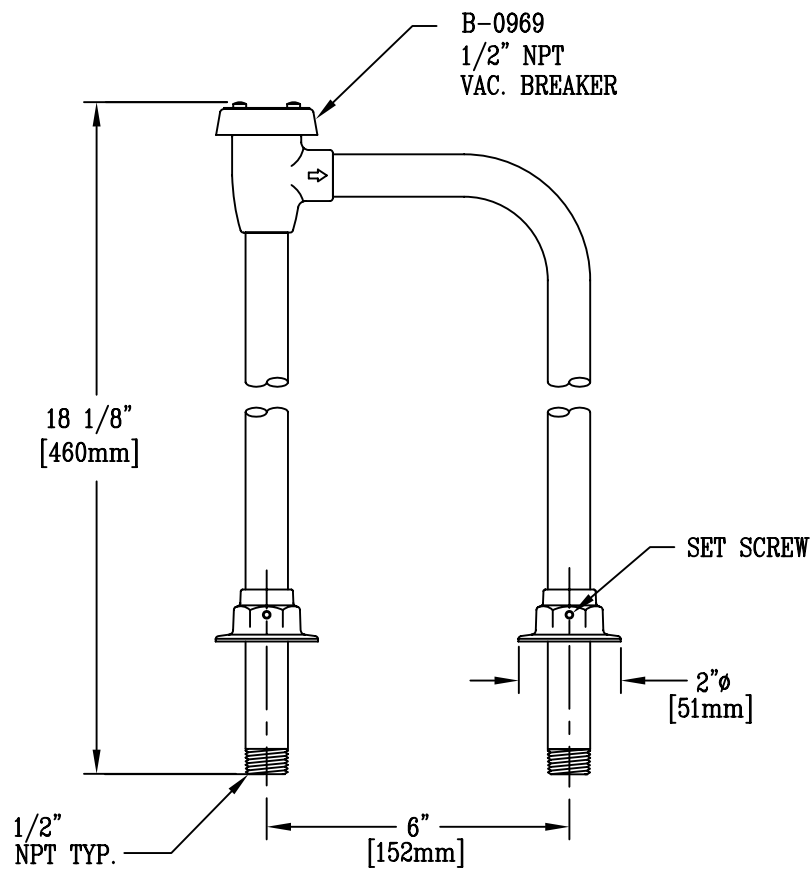
Item No.:

Job Name:

Architect/Engineer Approval:

Notes:

PIPES MUST BE HELD
RIGID UNDER SINK BY
CONNECTION FITTINGS,
BRACE, ETC.



Product Description:

VACUUM BREAKER-1/2" NPT

Drawn:

DHL

Checked

JRM

Scale:

1:4

Approved

JHB

Date:

10/01/09



T&S BRASS AND BRONZE WORKS, INC.

2 SADDLEBACK COVE / P.O. BOX 1088 / TRAVELERS REST, SC 29690

PHONE 800-476-4103

FAX 864- 834-3518



REG.#A2601
ISO #9002

Model No.

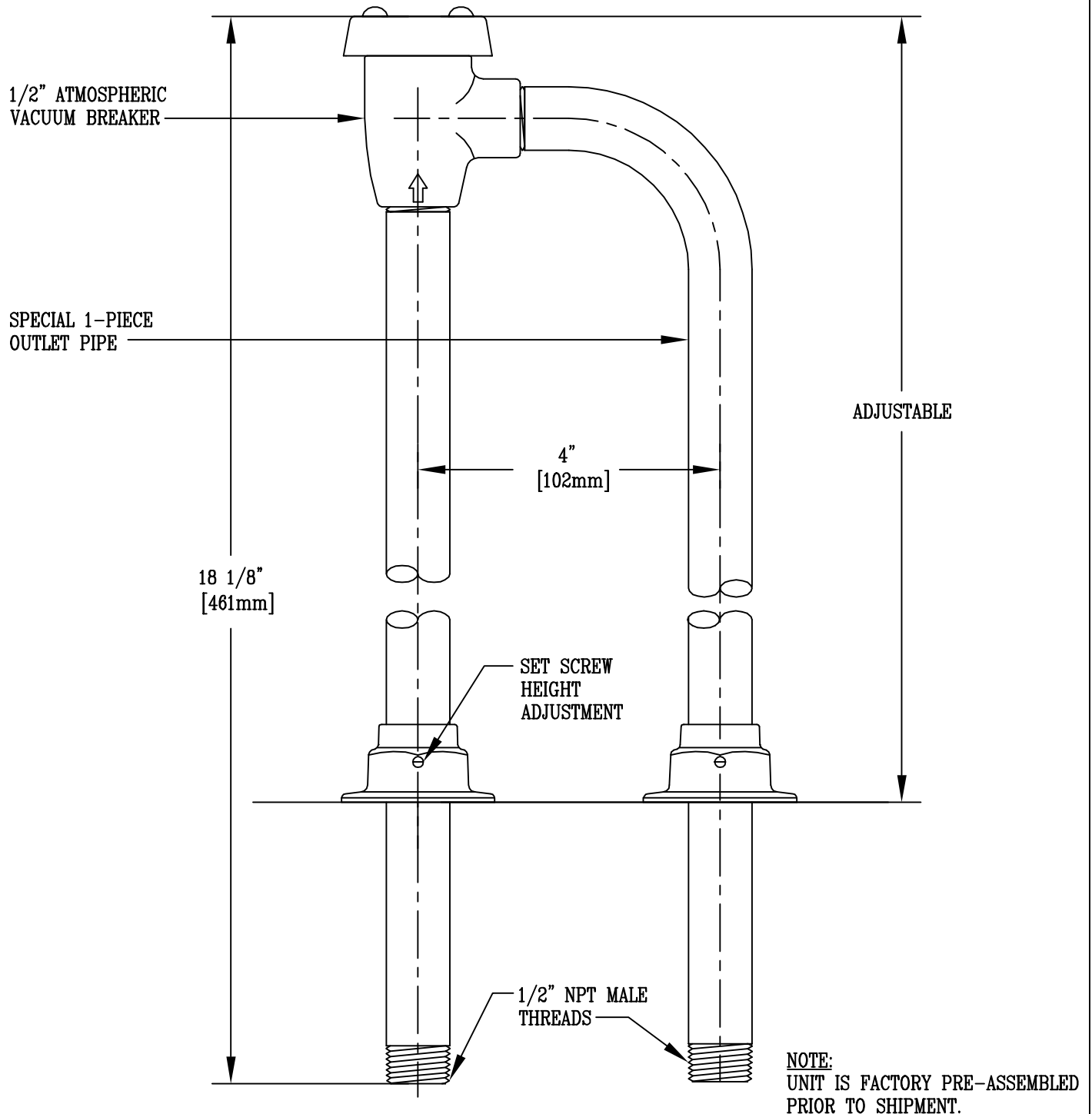
B-0456-04

Item No.:

Job Name:

Architect/Engineer Approval:

Notes:



Product Description:

B-0456 w/ 4" c/c MOUNTING
FACTORY PRE-ASSEMBLED

Drawn:

WJS

Approved

MVW

Checked

JKD

Scale:

1 : 2

Date:

1/4/99



T&S BRASS AND BRONZE WORKS, INC.

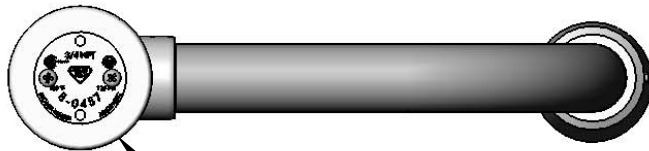
2 Saddleback Cove / P.O. Box 1088
Travelers Rest, SC 29690

Model No.

B-0457

Item No.

Travelers Rest, SC: 800-476-4103 • Simi Valley, CA: 800-423-0150 • Fax: 864-834-3518 • www.tsbrass.com



3/4" NPT
Vacuum Breaker

This Space for Architect/Engineer Approval

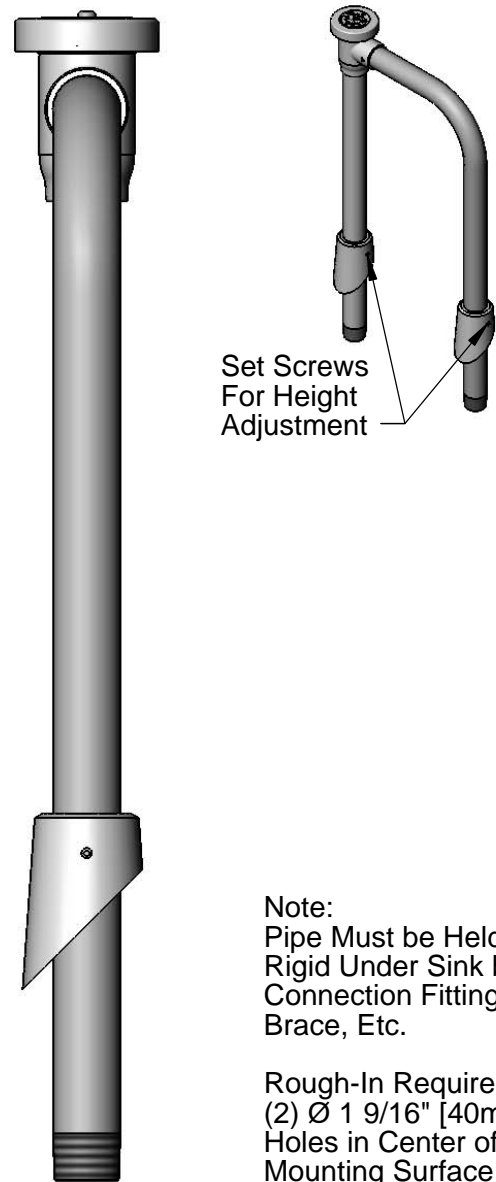
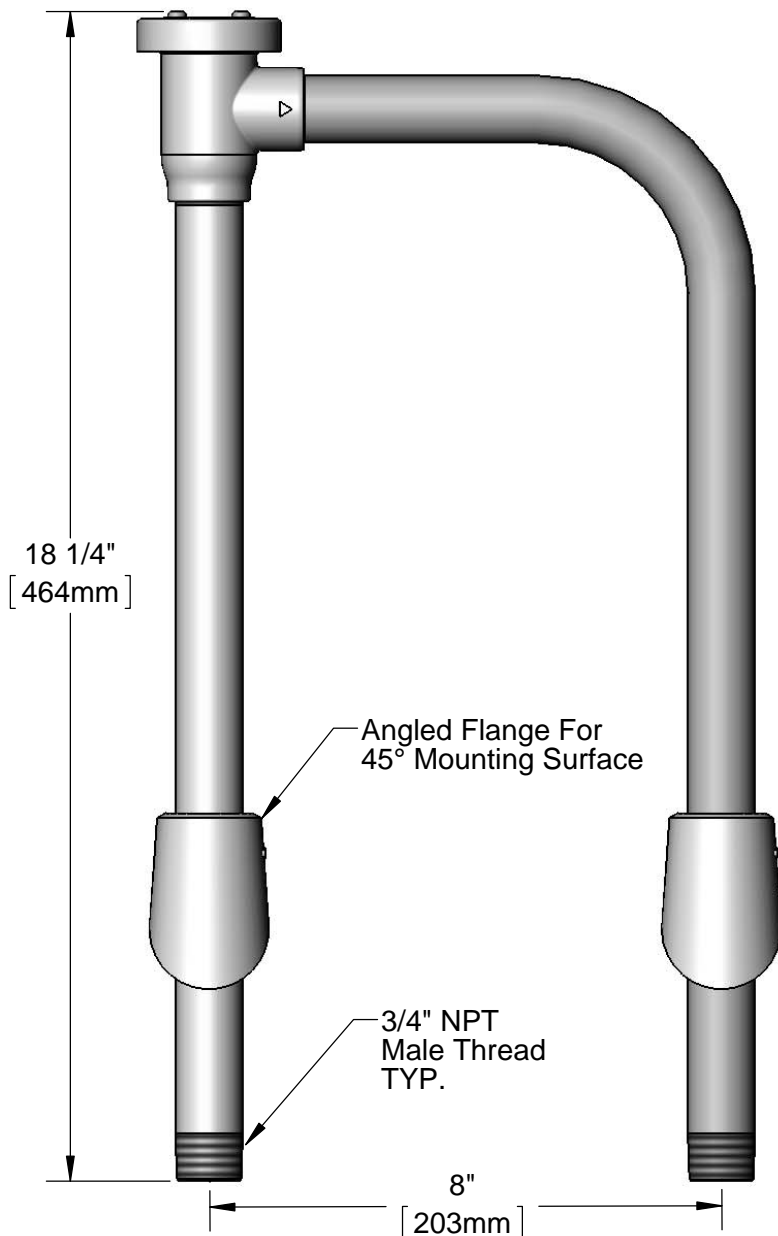
Job Name _____ Date _____

Model Specified _____ Quantity _____

Customer/Wholesaler _____

Contractor _____

Architect/Engineer _____



Set Screws
For Height
Adjustment

Note:
Pipe Must be Held
Rigid Under Sink by
Connection Fittings,
Brace, Etc.

Rough-In Requirement:
(2) \varnothing 1 9/16" [40mm]
Holes in Center of 45°
Mounting Surface to
Slip 3/4" Pipe Through.

Product Specifications:
3/4" NPT Vacuum Breaker Unit, 8" c/c

Product Compliance:
ASME A112.18.1 / CSA B125.1
NSF 61 - Section 9
NSF 372 (Low Lead Content)
ASSE 1001



T&S BRASS AND BRONZE WORKS, INC.

2 SADDLEBACK COVE / P.O. BOX 1088 / TRAVELERS REST, SC 29690

PHONE 800-476-4103

FAX 803- 834-3518



REG. #A2601
ISO #9002

Model No.

B-0458

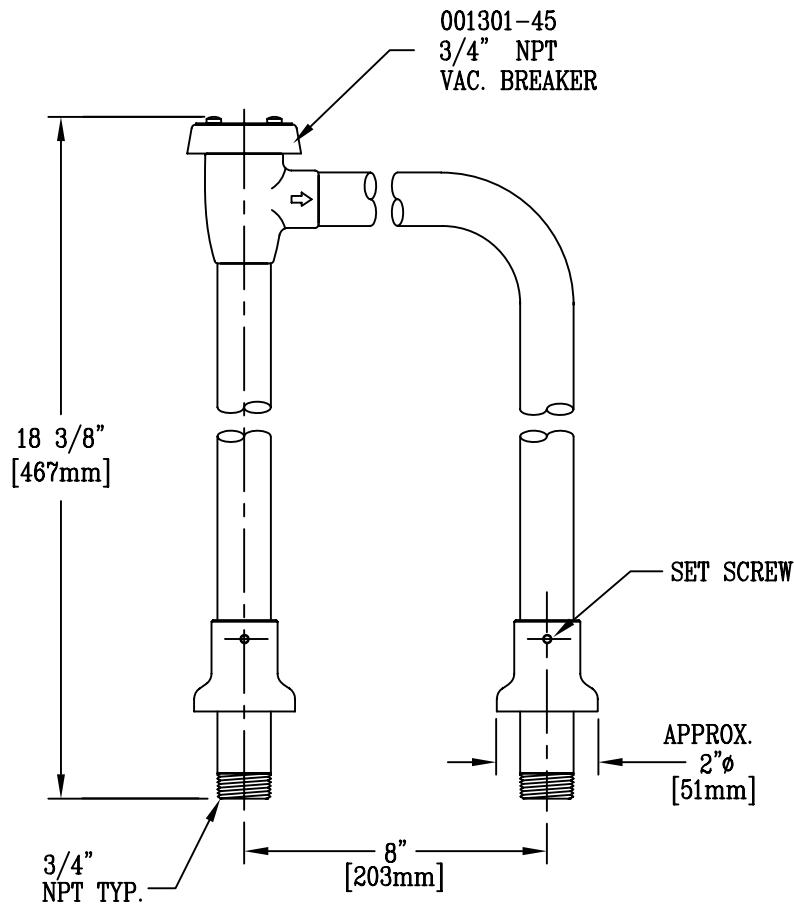
Item No.:

Job Name:

Architect/Engineer Approval:

Notes:

PIPES MUST BE HELD
RIGID UNDER SINK BY
CONNECTION FITTINGS,
BRACE, ETC.



Product Description:

VACUUM BREAKER UNIT-3/4" NPT

Drawn:

DHL

Approved

JHB

Checked

JRM

Scale:

1 : 4

Date:

10/01/09