



T&S BRASS AND BRONZE WORKS, INC.

2 Saddleback Cove / P.O. Box 1088
Travelers Rest, SC 29690

Model No.

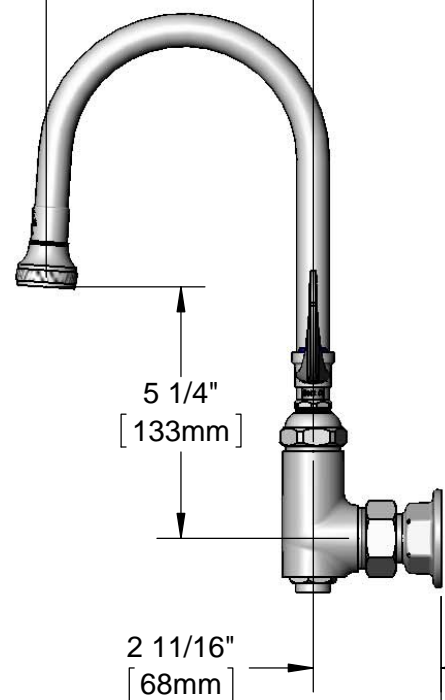
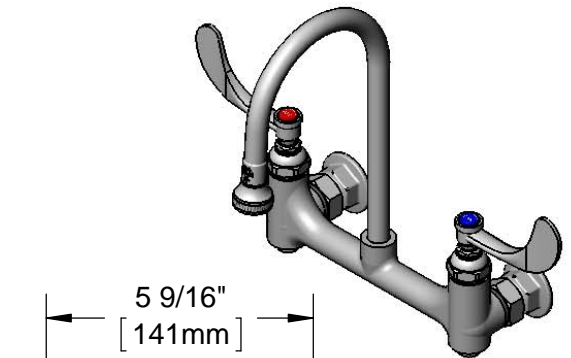
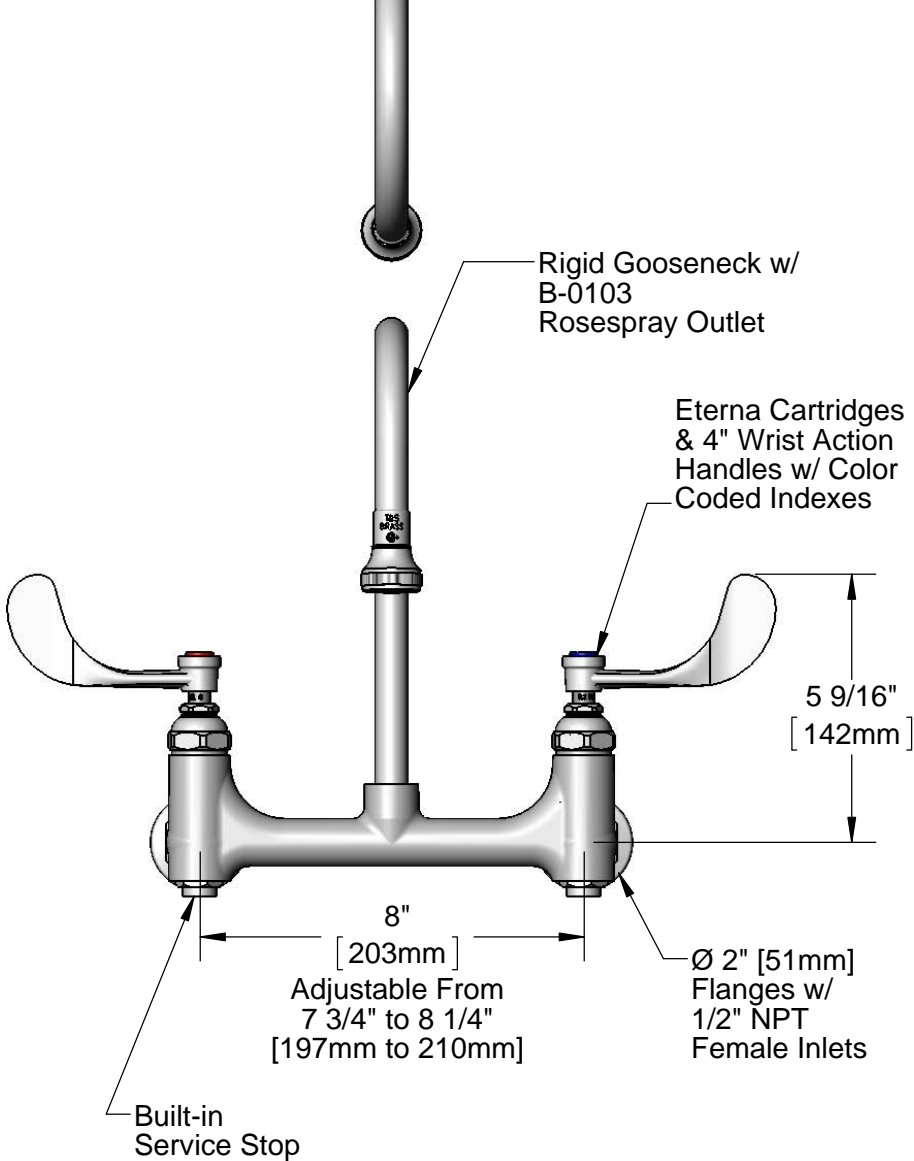
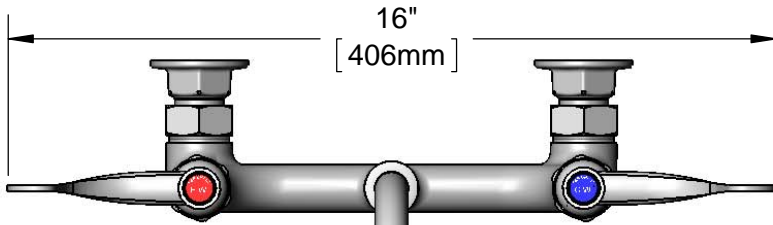
B-0352-04

Item No.

Travelers Rest, SC: 800-476-4103 • Simi Valley, CA: 800-423-0150 • Fax: 864-834-3518 • www.tsbrass.com



ADA Compliant



Mounting Surface

This Space for Architect/Engineer Approval

Job Name _____ Date _____

Model Specified _____ Quantity _____

Customer/Wholesaler _____

Contractor _____

Architect/Engineer _____

Product Specifications:

8" Wall Mount Mixing Faucet, Eterna Cartridges, 4" Wrist Action Handles, 5 1/2" Rigid Goosneck w/ Rosespray Outlet & 1/2" NPT Female Inlets

Product Compliance:

ASME A112.18.1 / CSA B125.1
NSF 61 - Section 9
NSF 372 (Low Lead Content)
ANSI A117.1 (ADA)



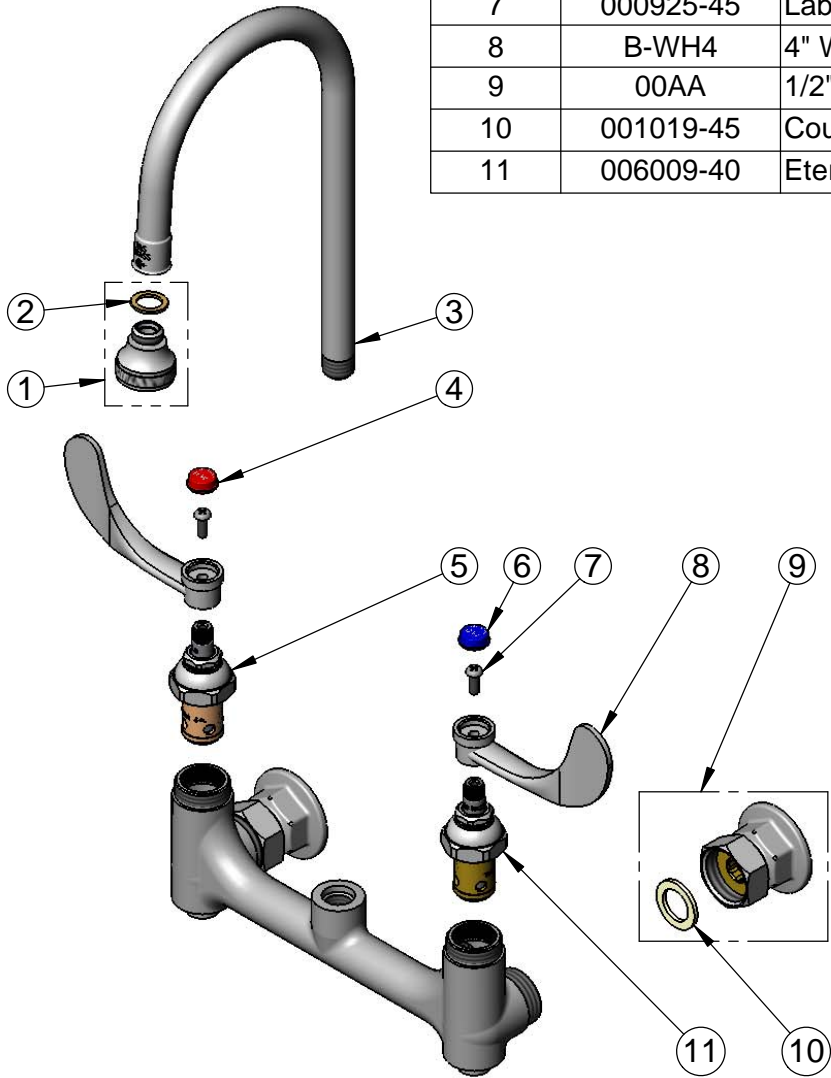
T&S BRASS AND BRONZE WORKS, INC.
2 Saddleback Cove / P.O. Box 1088
Travelers Rest, SC 29690

Model No.
B-0352-04

Item No.

Travelers Rest, SC: 800-476-4103 • Simi Valley, CA: 800-423-0150 • Fax: 864-834-3518 • www.tsbrass.com

ITEM NO.	SALES NO.	DESCRIPTION
1	B-0103	Rosespray Outlet, 3/8" NPSM Male
2	001043-45	Washer
3	000398-40	Rigid Gooseneck
4	001194-45	Red Index - HW
5	006010-40	Eterna Cartridge, RTC (Teflon)
6	001686-45	Blue Index - CW
7	000925-45	Lab Handle Screw </td
8	B-WH4	4" Wrist Action Handle
9	00AA	1/2" NPT Female Eccentric Flange
10	001019-45	Coupling Nut Washer
11	006009-40	Eterna Cartridge, LTC (Teflon)



Product Specifications:
8" Wall Mount Mixing Faucet, Eterna Cartridges, 4" Wrist Action
Handles, 5 1/2" Rigid Goosneck w/ Rosespray Outlet & 1/2" NPT
Female Inlets

Product Compliance:
ASME A112.18.1 / CSA B125.1
NSF 61 - Section 9
NSF 372 (Low Lead Content)
ANSI A117.1 (ADA)



T&S BRASS AND BRONZE WORKS, INC.

2 SADDLEBACK COVE / P.O. BOX 1088 / TRAVELERS REST, SC 29690

PHONE 800-476-4103

FAX 864-834-3518



REG. #A2601
ISO #9002

Model No.

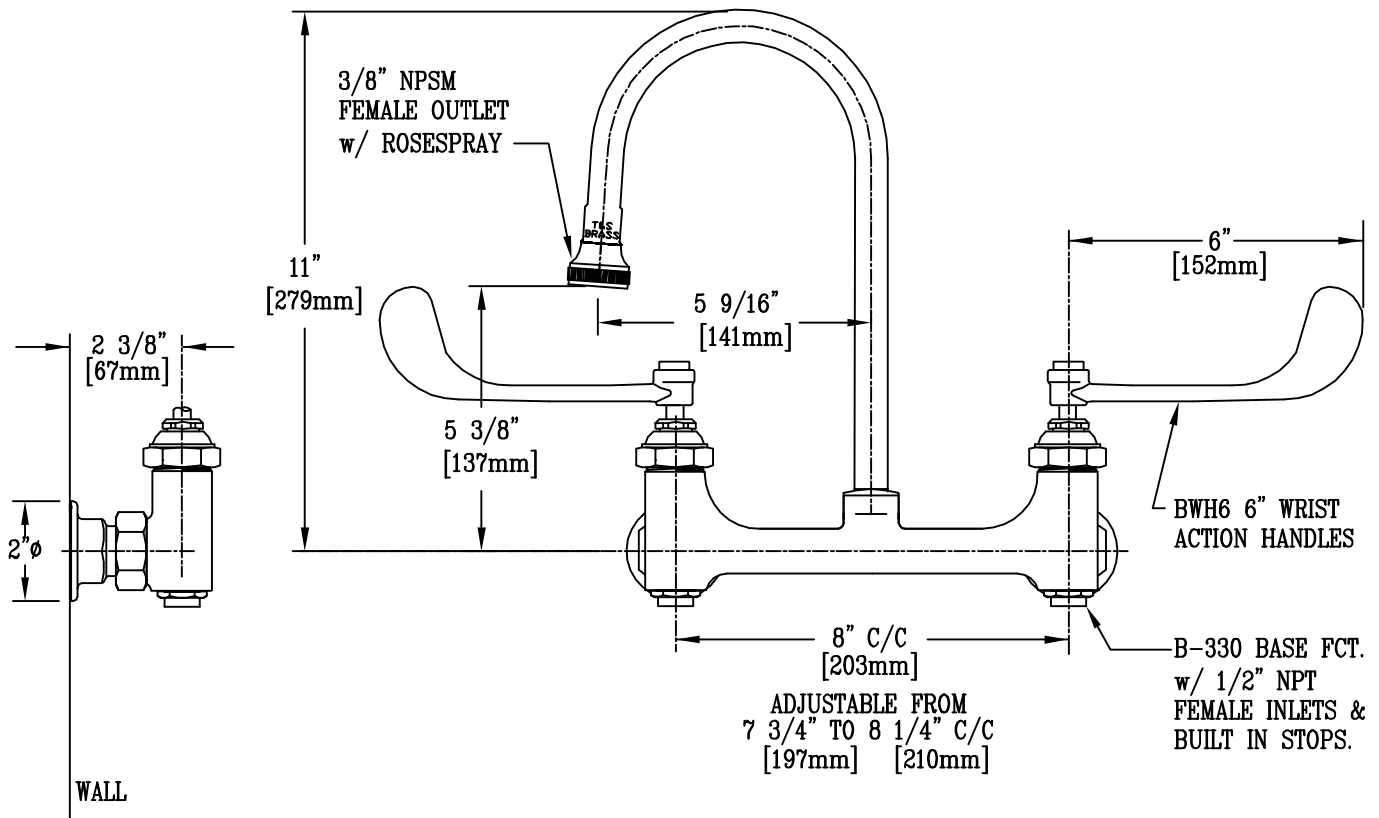
B-0352

Item No.:

Job Name:

Architect/Engineer Approval:

Notes:



ALSO AVAILABLE WITH B-WH-4" WRIST ACTION HANDLES.

Product Description:

SURGICAL SINK FAUCET WITH RIGID GOOSENECK,
ROSESPRAY, & 6" WRIST ACTION HANDLES

Drawn:

WJS

Approved

MVW

Checked

MVW

Scale:

1 : 4

Date:

6-16-99



T&S BRASS AND BRONZE WORKS, INC.

2 SADDLEBACK COVE / P.O. BOX 1088 / TRAVELERS REST, SC 29690

PHONE 800-476-4103

FAX 864-834-3518



REG.#A2601
ISO #9002

Model No.

B-0353-04

Item No.:

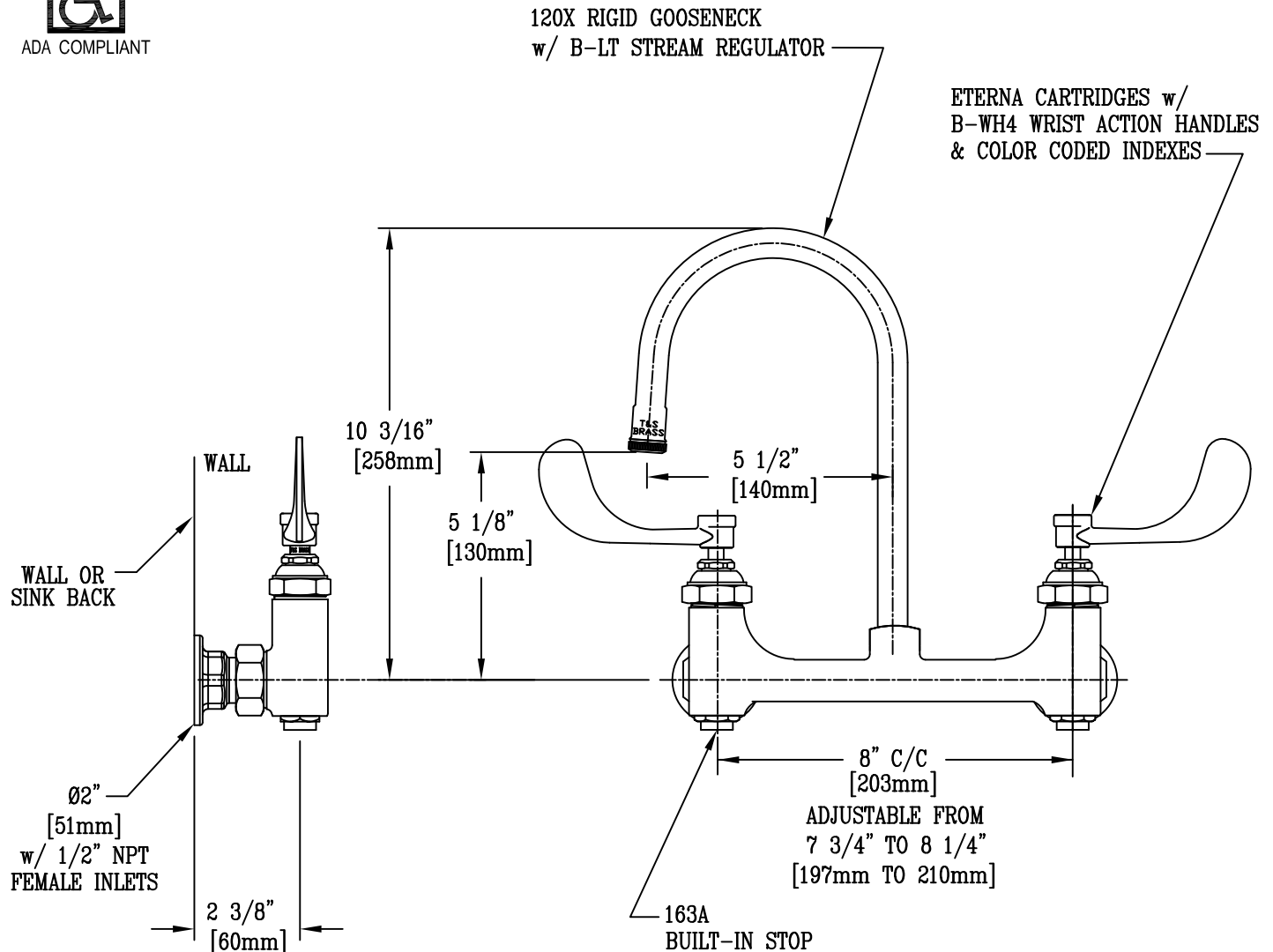
Job Name:

Architect/Engineer Approval:

Notes:



ADA COMPLIANT



NOTES :

1. ALSO AVAILABLE w/ LEVER HANDLES
2. ALSO AVAILABLE WITH MODEL #B-SD SOAP DISH
3. ALSO AVAILABLE WITH B-0199-01 NON-SPLASH AERATOR.
4. BST PROVIDES INDIVIDUAL SHUT-OFF OF EACH VALVE WHEN MAINTENANCE IS REQUIRED.

Product Description:

8" c/c RIGID WALL MOUNT FAUCET, 120X RIGID GOOSENECK
w/ STREAM REGULATOR, Ø2" WALL FLANGES w/ 1/2" NPT
ADJUSTABLE FEMALE INLETS & BUILT-IN STOPS

Drawn:

DHL

Approved

JHB

Checked

KJG

Scale:

1:4

Date:

07/01/10



T&S BRASS AND BRONZE WORKS, INC.

2 SADDLEBACK COVE / P.O. BOX 1088 / TRAVELERS REST, SC 29690

PHONE 800-476-4103

FAX 803-834-3518



REG.#A2601
ISO #9002

Model No.

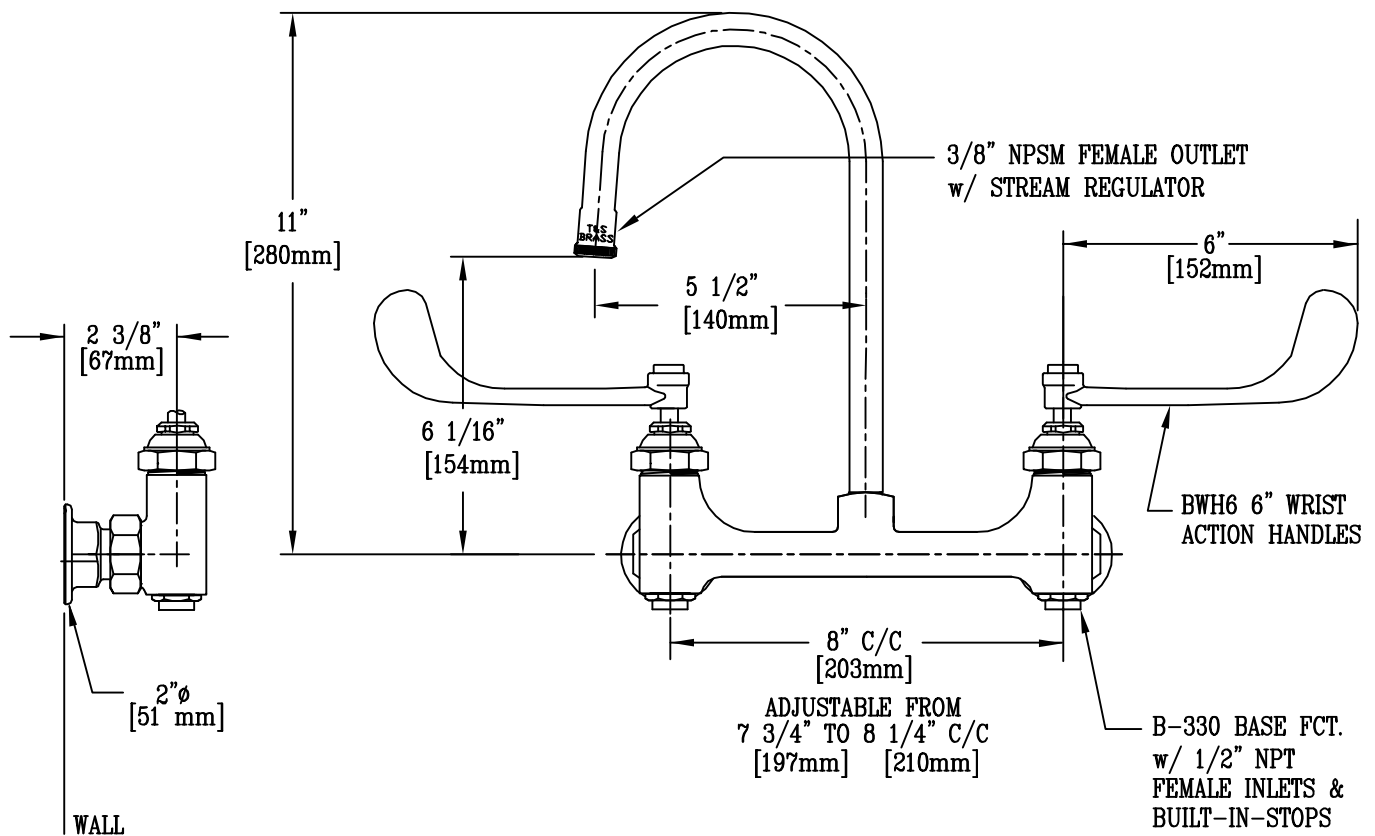
B-0353

Item No.:

Job Name:

Architect/Engineer Approval:

Notes:



Product Description:

8" c/c WALL MOUNTED SURGICAL SINK
FAUCET w/ 120X RIGID GOOSENECK, STREAM
REGULATOR & 6" WRIST ACTION HANDLES

Drawn:

WJS

Approved

MVW

Checked

MVW

Scale:

1 : 4

Date:

6-16-99