



T&S BRASS AND BRONZE WORKS, INC.

2 Saddleback Cove / P.O. Box 1088
Travelers Rest, SC 29690

Model No.

B-0167

Item No.

Travelers Rest, SC: 800-476-4103 • Simi Valley, CA: 800-423-0150 • Fax: 864-834-3518 • www.tsbrass.com

This Space for Architect/Engineer Approval

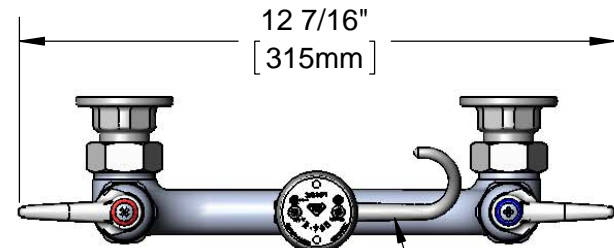
Job Name _____ Date _____

Model Specified _____ Quantity _____

Customer/Wholesaler _____

Contractor _____

Architect/Engineer _____



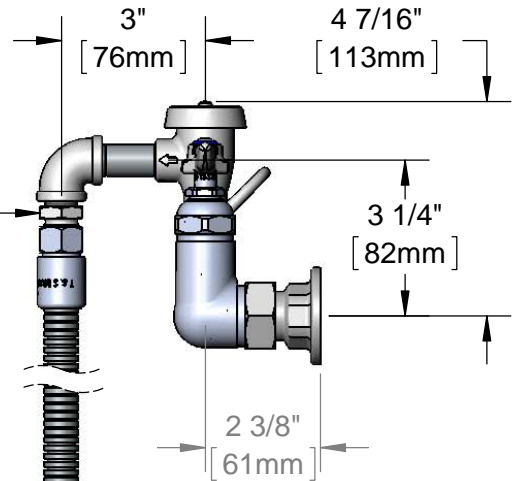
Finger Hook

3/8" NPT x 3/4-14 UN Adapter

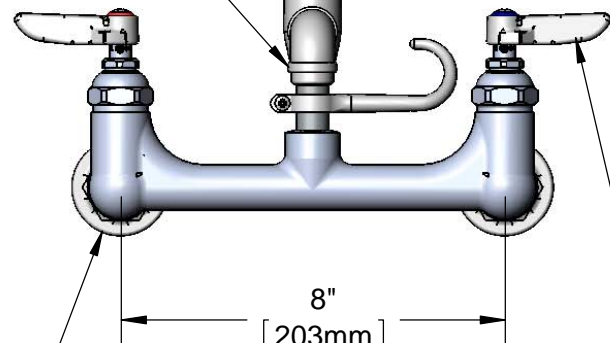
EB-0107-035
High Flow
Angled
Spray Valve

B-0968
3/8" NPT
Vacuum Breaker

Items Not Shown
For Clarity



68" Flexible
Stainless
Steel Hose



Adjustable From
7 3/4" to 8 1/4"
[197mm to 210mm]

Ø 2" [51mm]
Flanges w/
1/2" NPT
Female Inlets

Eterna Cartridges w/
Spring Checks &
Lever Handles w/
Color Coded Indexes

Product Specifications:

8" Wall Mount Mixing Faucet, Eterna Cartridges w/ Spring Checks, Lever Handles, 3/8" NPT Vacuum Breaker, High Flow Angled Spray Valve w/ 68" Flexible Stainless Steel Hose & 1/2" NPT Female Inlet

Product Compliance:

ASME A112.18.1 / CSA B125.1
NSF 61 - Section 9
NSF 372 (Low Lead Content)
EPA Act 2005 Non-Compliant (PRSV)
ASSE 1001



T&S BRASS AND BRONZE WORKS, INC.

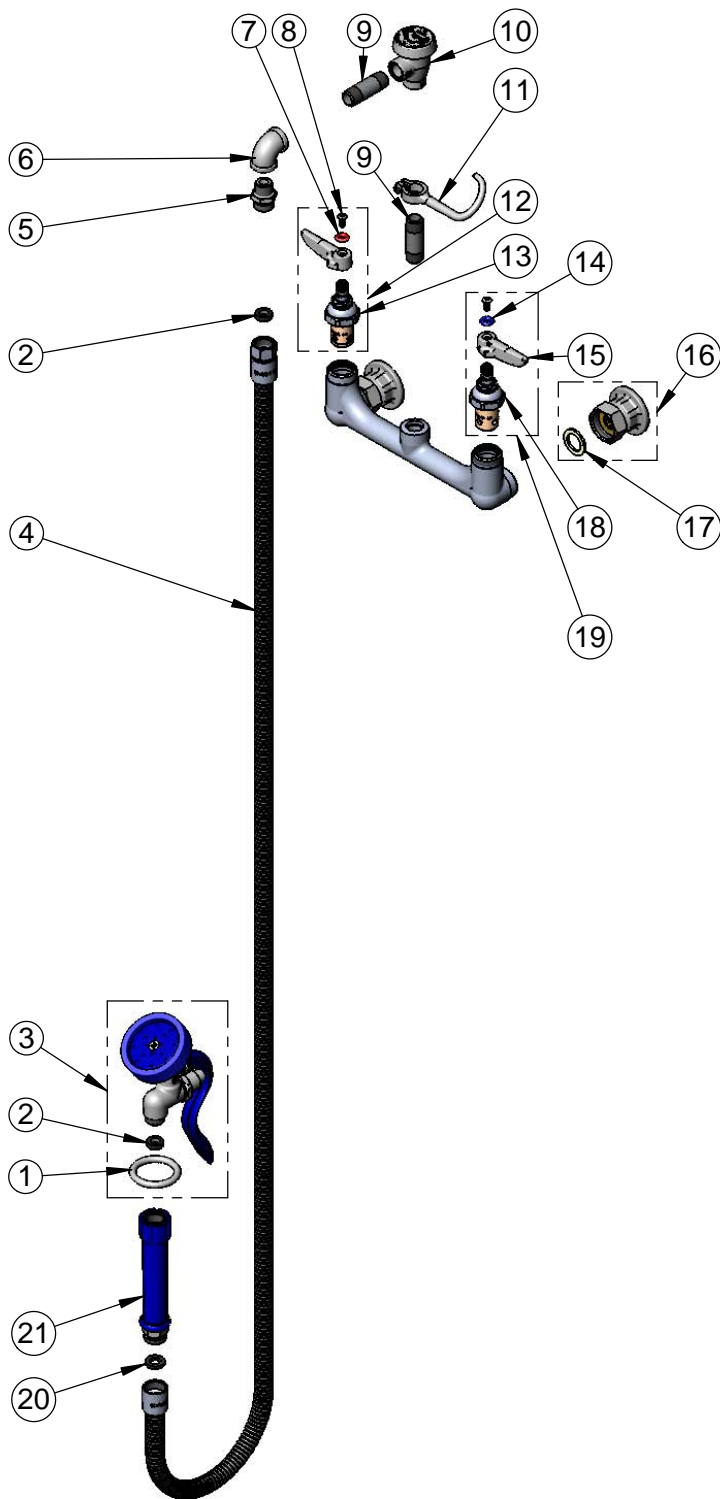
2 Saddleback Cove / P.O. Box 1088
Travelers Rest, SC 29690

Model No.

B-0167

Item No.

Travelers Rest, SC: 800-476-4103 • Simi Valley, CA: 800-423-0150 • Fax: 864-834-3518 • www.tsbrass.com



| ITEM NO. | SALES NO. | DESCRIPTION |
|----------|-------------|--|
| 1 | 000907-45 | Spray Valve Hold Down Ring |
| 2 | 010476-45 | #27 Washer |
| 3 | EB-0107-035 | High Flow Angled Spray Valve (Blue) |
| 4 | B-0068-H2A | 68" Flexible Stainless Steel Hose, Less Handle |
| 5 | 053A | Adapter, 3/8" NPT Male x 3/4-14 UN |
| 6 | 001355-40 | 3/8" NPT Elbow |
| 7 | 001661-45 | Red Index-HW |
| 8 | 000922-45 | Lever Handle Screw |
| 9 | 000357-40 | Nipple, 3/8" NPT x 2" |
| 10 | B-0968 | 3/8" NPT Vacuum Breaker |
| 11 | 004R | Finger Hook |
| 12 | 002712-40 | Eterna Cartridge, RTC w/ Spring Check, Lever Handle, Index & Screw |
| 13 | 012443-40 | Eterna Cartridge, RTC w/ Spring Check |
| 14 | 001660-45 | Blue Index-CW |
| 15 | 001638-45 | Lever Handle |
| 16 | 00AA | 1/2" NPT Female Eccentric Flange |
| 17 | 001019-45 | Coupling Nut Washer |
| 18 | 012442-40 | Eterna Cartridge, LTC w/ Spring Check |
| 19 | 002711-40 | Eterna Cartridge, LTC w/ Spring Check, Lever Handle, Index & Screw |
| 20 | 001014-45 | Washer, B-0100 Hose Barrel |
| 21 | 011482-40 | Blue Grip Handle |

Product Specifications:

8" Wall Mount Mixing Faucet, Eterna Cartridges w/ Spring Checks, Lever Handles, 3/8" NPT Vacuum Breaker, High Flow Angled Spray Valve w/ 68" Flexible Stainless Steel Hose & 1/2" NPT Female Inlet

Product Compliance:

ASME A112.18.1 / CSA B125.1
NSF 61 - Section 9
NSF 372 (Low Lead Content)
EPA 2005 Non-Compliant (PRSV)
ASSE 1001

Drawn: KJG

Checked: JRM

Approved: JHB

Date: 04/11/14

Scale: NTS

Sheet: 2 of 2



T&S BRASS AND BRONZE WORKS, INC.
2 SADDLEBACK COVE / P.O. BOX 1088 / TRAVELERS REST, SC 29690
PHONE 800-476-4103 FAX 864- 834-3518

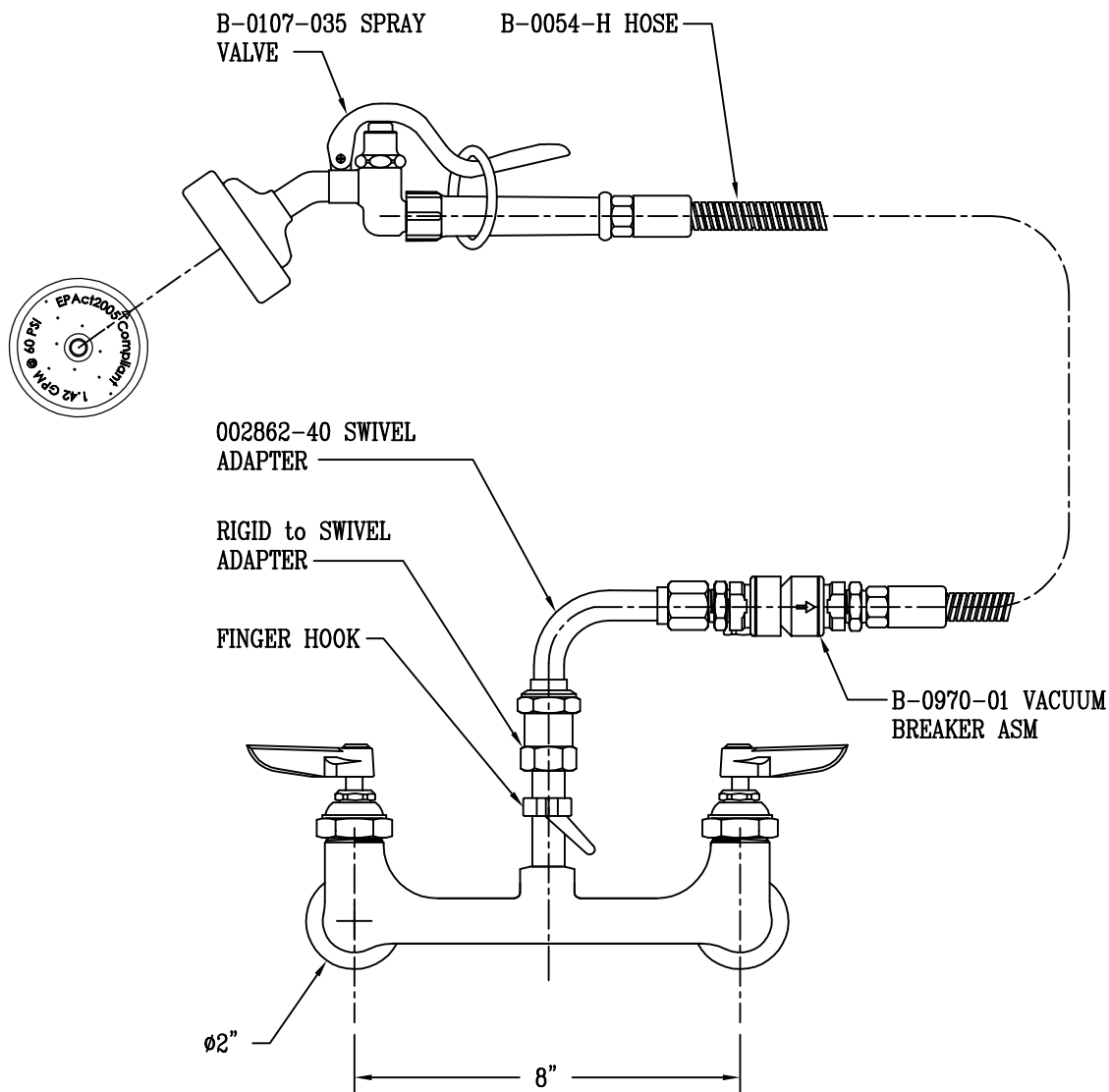


| |
|-----------|
| Model No. |
| B-0167-01 |
| Item No.: |

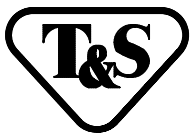
| | |
|-----------|------------------------------|
| Job Name: | Architect/Engineer Approval: |
|-----------|------------------------------|

Notes:

EPAc2005 COMPLIANT



| | | | |
|---|-----------------|---------|-------------------|
| Product Description: SPRAY UNIT ASSEMBLY | Drawn: | Checked | Scale: |
| | RJK | JRM | 1 : 4 |
| | Approved JHB | | Date: 01-04-06 |



T&S BRASS AND BRONZE WORKS, INC.

2 SADDLEBACK COVE / P.O. BOX 1088 / TRAVELERS REST, SC 29690

PHONE 800-476-4103 - FAX 864- 834-3518



REG.#A2601
ISO #9001

Model No.

B-0167-02

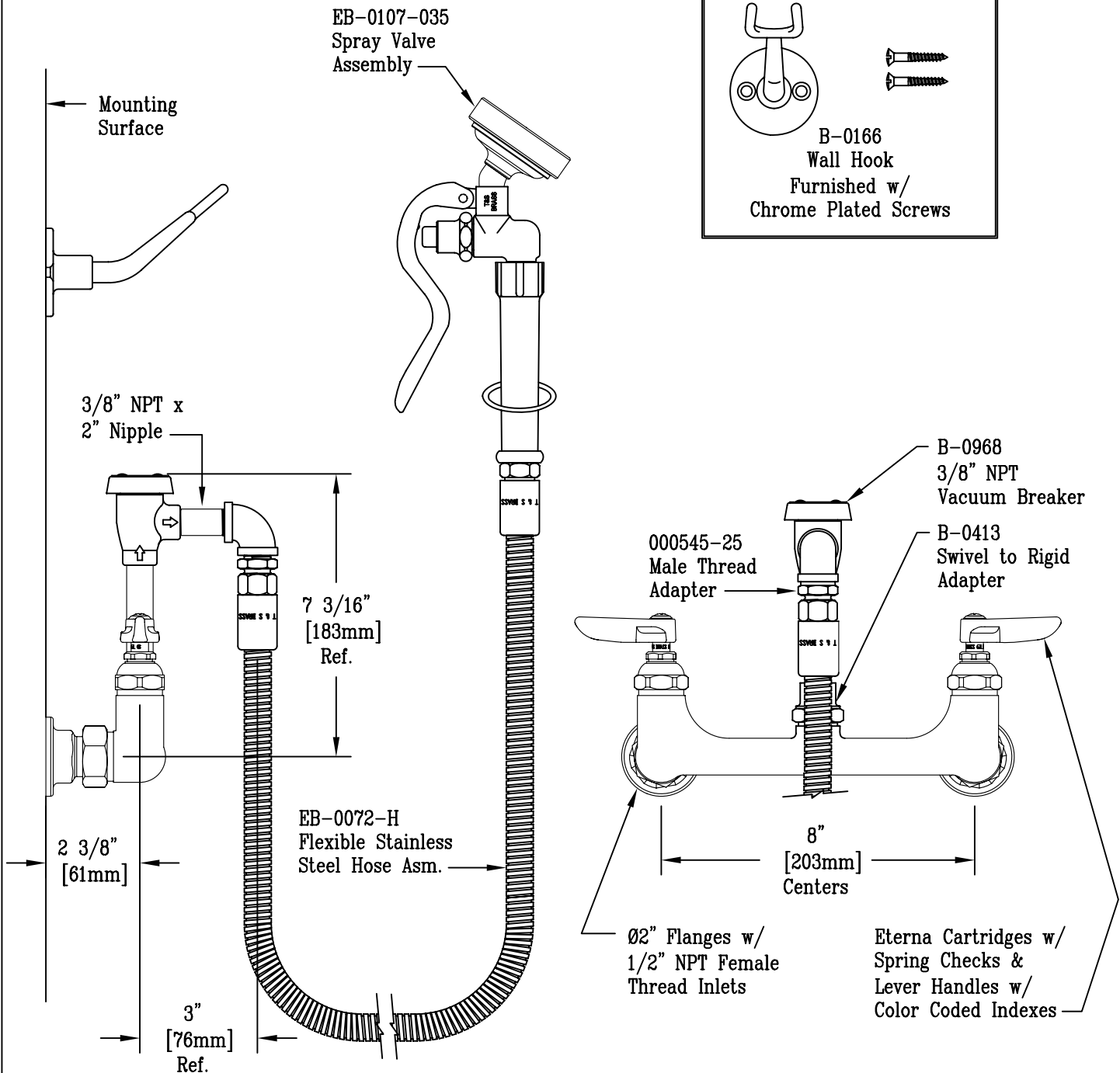
RELIABILITY
BUILT IN

Job Name:

Architect/Engineer Approval:

Notes:

EPAct2005 NON-COMPLIANT



Product Description:
8" Wall Mount Faucet, B-0968 Vacuum Breaker,
EB-0107-035 Spray Valve w/ EB-0072-H
Flex Hose Assembly & B-0166 Wall Hook

Drawn:

DHL

Approved

JHB

Checked

ARH

Scale:

1:4

Date:

06/09/09



T&S BRASS AND BRONZE WORKS, INC.

2 SADDLEBACK COVE / P.O. BOX 1088 / TRAVELERS REST, SC 29690

PHONE 800-476-4103

FAX 864- 834-3518



REG.#A2601
ISO #9002

Model No.

B-0167-HH

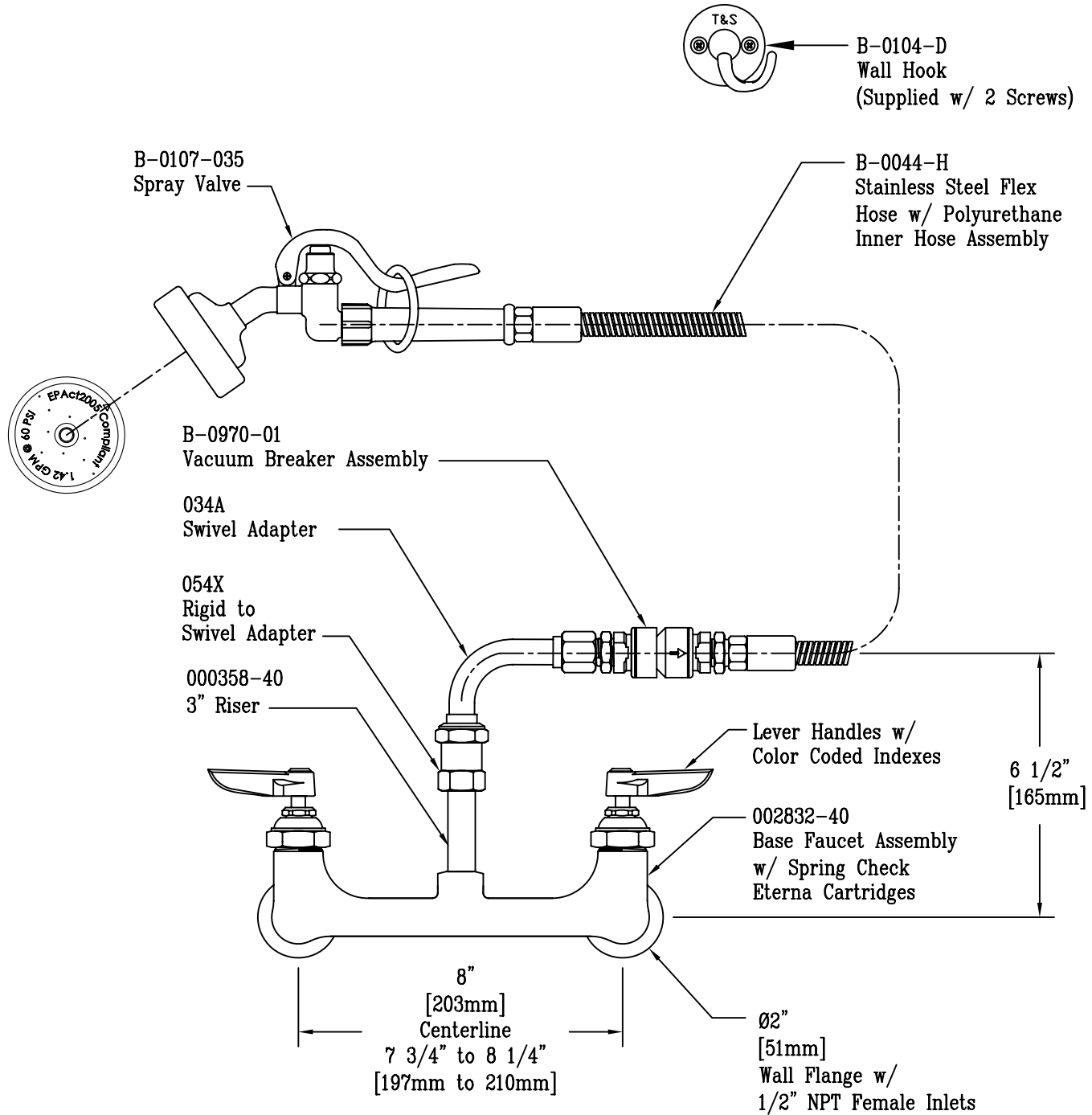
Item No.:

Job Name:

Architect/Engineer Approval:

Notes:

EPAct2005 COMPLIANT



Product Description:

8" Wall Mount Faucet w/ B-0107-035 Spray Valve Assembly

Drawn:

DHL

Approved

JHB

Checked

JRM

Scale:

1:4

Date:

06/26/09

