



T&S BRASS AND BRONZE WORKS, INC.

2 Saddleback Cove / P.O. Box 1088
Travelers Rest, SC 29690

Model No.

B-0502

Item No.

Travelers Rest, SC: 800-476-4103 • Simi Valley, CA: 800-423-0150 • Fax: 864-834-3518 • www.tsbrass.com

This Space for Architect/Engineer Approval

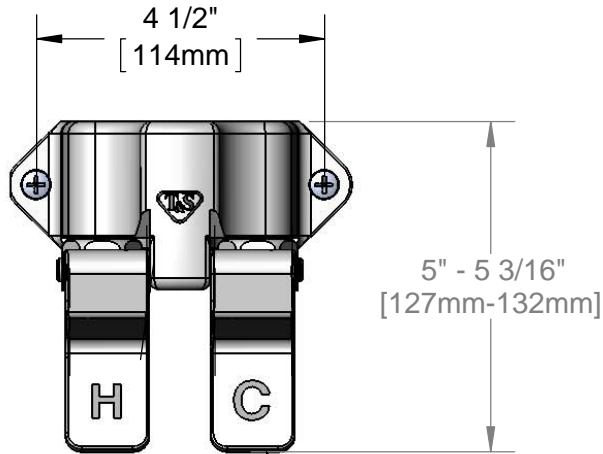
Job Name _____ Date _____

Model Specified _____ Quantity _____

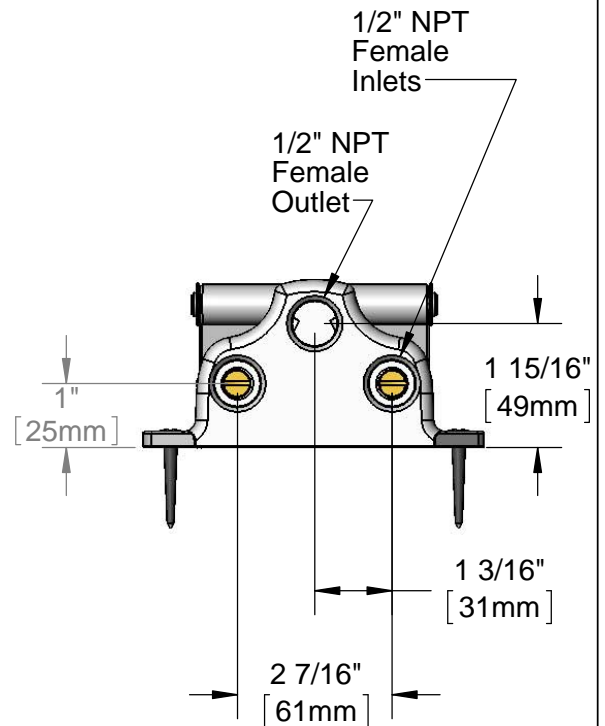
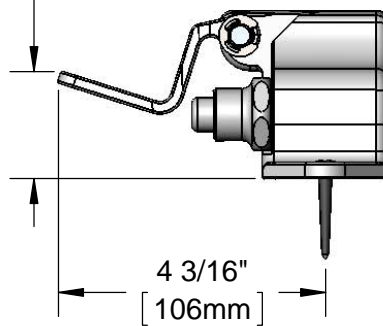
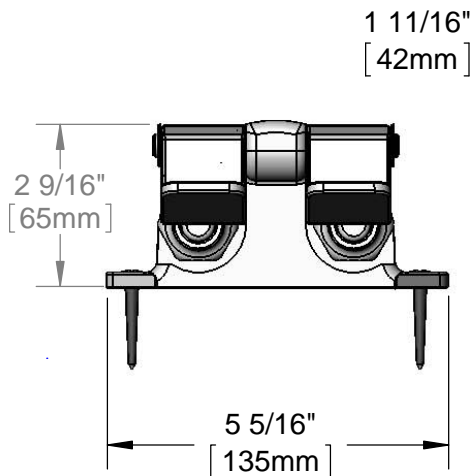
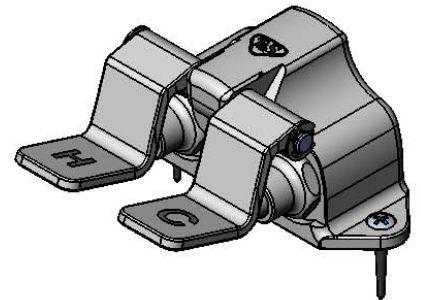
Customer/Wholesaler _____

Contractor _____

Architect/Engineer _____



Chrome Plated
Brass Foot Pedals



Product Specifications:

Double Pedal Valve
1/2" NPT Female Inlets & Outlet

Product Compliance:

ASME A112.18.1 / CSA B125.1
NSF 61 - Section 9
NSF 372 (Low Lead Content)



T&S BRASS AND BRONZE WORKS, INC.

2 Saddleback Cove / P.O. Box 1088
Travelers Rest, SC 29690

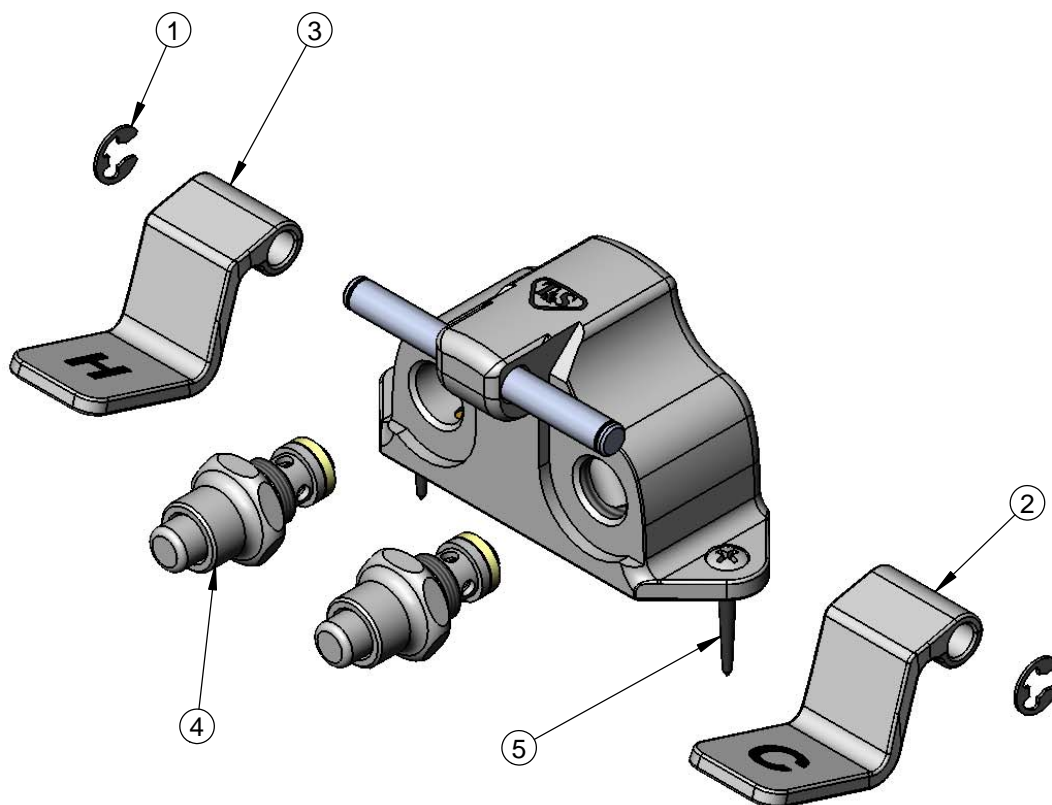
Model No.

B-0502

Item No.

Travelers Rest, SC: 800-476-4103 • Simi Valley, CA: 800-423-0150 • Fax: 864-834-3518 • www.tsbrass.com

ITEM NO.	SALES NO.	DESCRIPTION
1	012512-45	E-clip Retaining Ring
2	000091-25	Cold Pedal
3	000092-25	Hot Pedal
4	005312-40	Pedal Valve Bonnet Assembly
5	000915-45	Mounting Screw



Product Specifications:

Double Pedal Valve
1/2" NPT Female Inlets & Outlet

Product Compliance:

ASME A112.18.1 / CSA B125.1
NSF 61 - Section 9
NSF 372 (Low Lead Content)



T&S BRASS AND BRONZE WORKS, INC.

2 SADDLEBACK COVE / P.O. BOX 1088 / TRAVELERS REST, SC 29690

PHONE 800-476-4103

FAX 864-834-3518



REG.#A2601
ISO #9002

Model No.

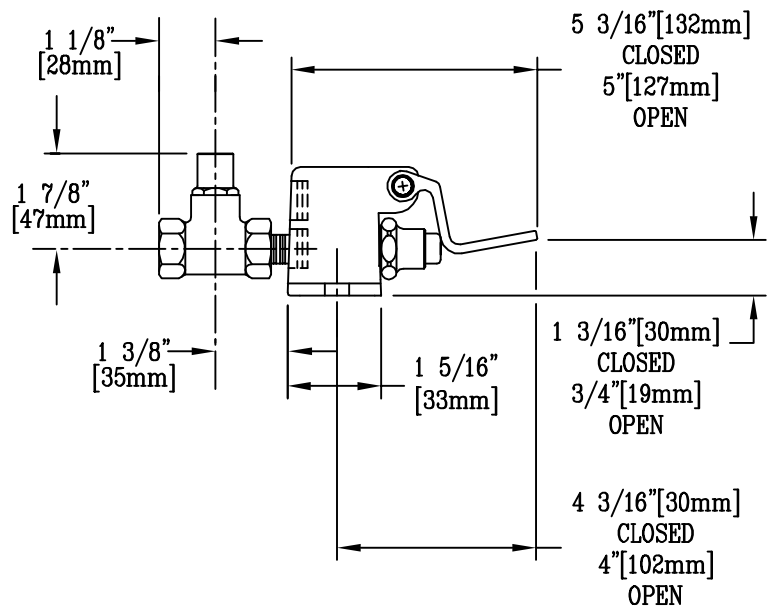
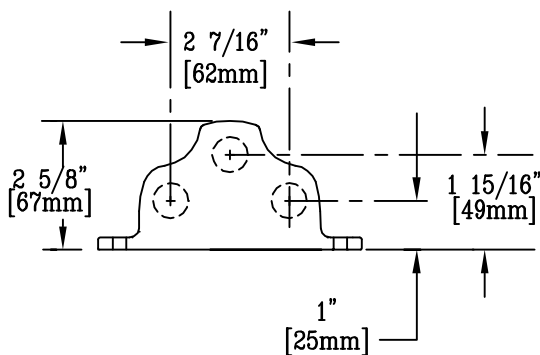
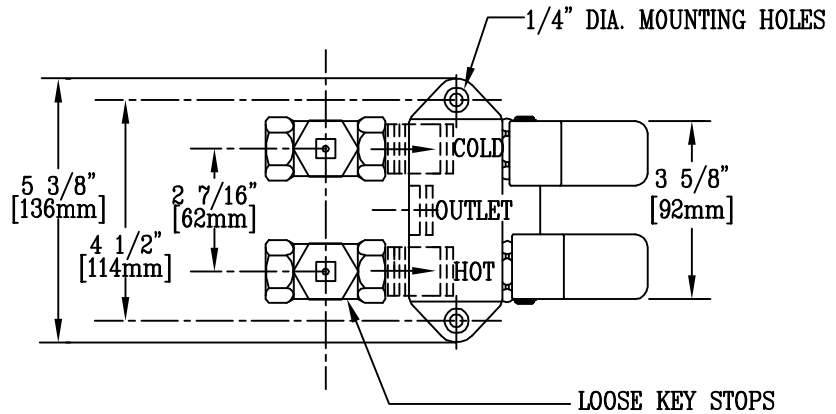
B-0502-LKS

Item No.:

Job Name:

Architect/Engineer Approval:

Notes:



NOTE 1. INLETS & OUTLET ARE 1/2" NPT FEMALE

NOTE 2. FURNISHED WITH (2) WOOD MOUNTING SCREWS

Product Description:

DOUBLE PEDAL VALVE WITH LOOSE KEY STOPS

Drawn:

TME

Approved

MVW

Checked

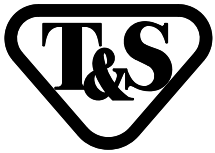
WJS

Scale:

1 : 4

Date:

10/23/98



T&S BRASS AND BRONZE WORKS, INC.

2 Saddleback Cove / P.O. Box 1088
Travelers Rest, SC 29690

Model No.

B-0502-SL

Item No.

Travelers Rest, SC: 800-476-4103 • Simi Valley, CA: 800-423-0150 • Fax: 864-834-3518 • www.tsbrass.com

This Space for Architect/Engineer Approval

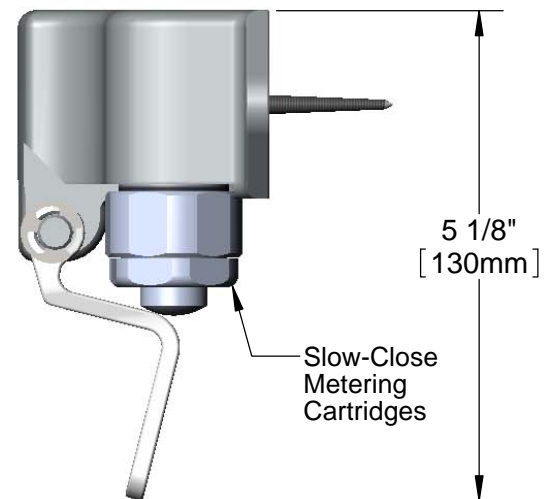
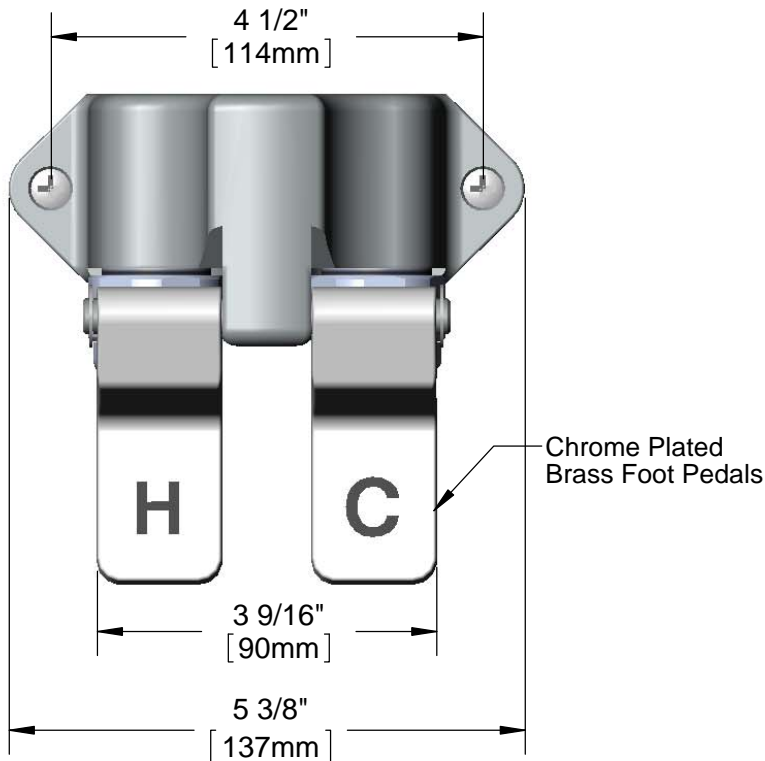
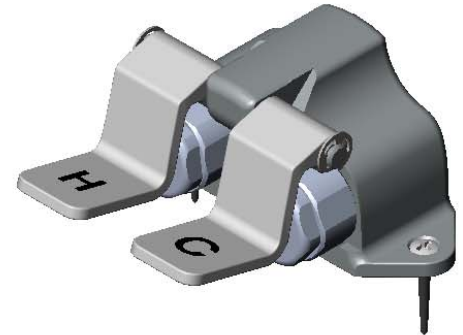
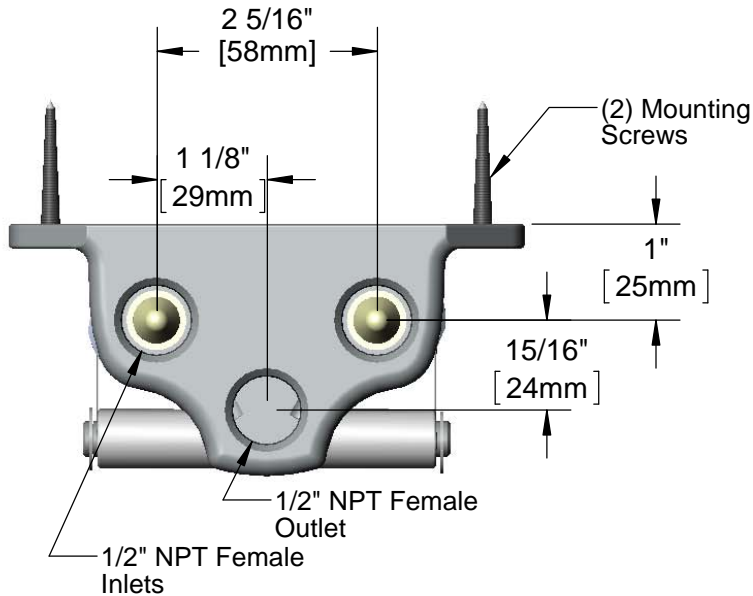
Job Name _____ Date _____

Model Specified _____ Quantity _____

Customer/Wholesaler _____

Contractor _____

Architect/Engineer _____



Product Specifications:

Slow Close Double Pedal Valve, 1/2" NPT Female Inlets & Outlet

Product Compliance:

ASME A112.18.1 / CSA B125.1
NSF 61 - Section 9
NSF 372 (Low Lead Content)



T&S BRASS AND BRONZE WORKS, INC.

2 Saddleback Cove / P.O. Box 1088
Travelers Rest, SC 29690

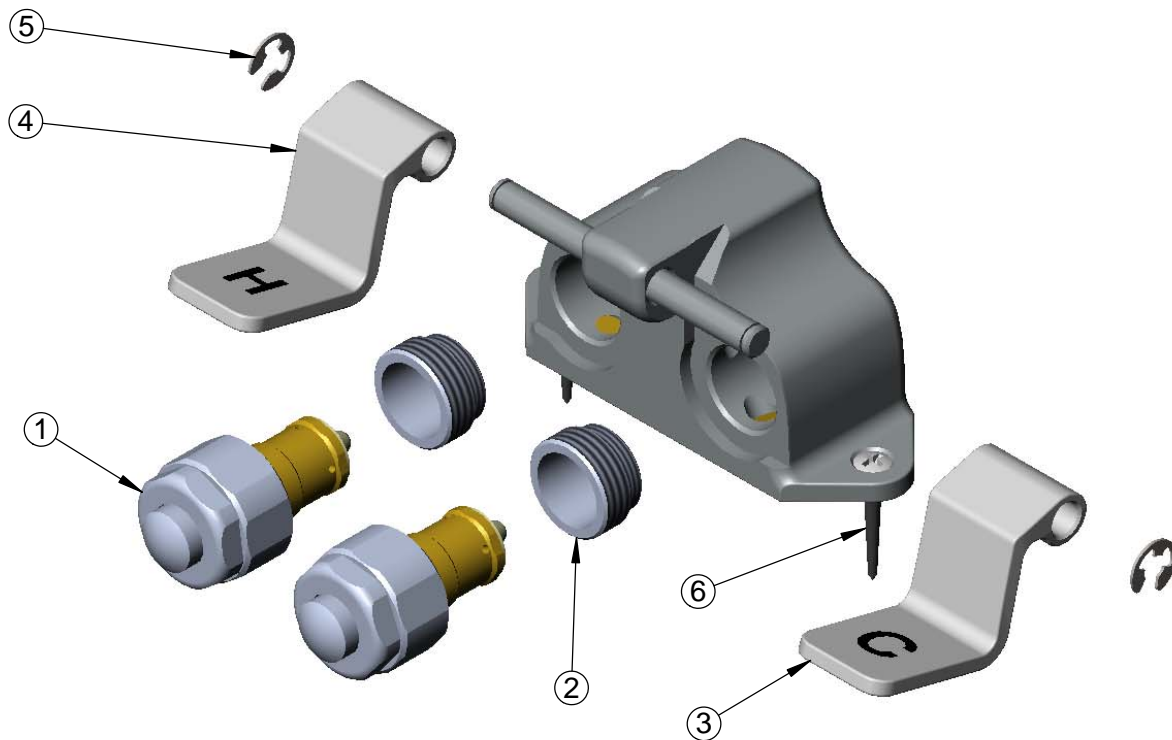
Model No.

B-0502-SL

Item No.

Travelers Rest, SC: 800-476-4103 • Simi Valley, CA: 800-423-0150 • Fax: 864-834-3518 • www.tsbrass.com

ITEM	PART NO.	DESCRIPTION
1	011399-40	Slow Close Ctg.
2	011320-25	Adapter
3	000091-25	Cold Pedal
4	000092-25	Hot Pedal
5	012512-45	E-Clip Retaining Ring
6	000915-45	Mounting Screw



Product Specifications:

Slow Close Double Pedal Valve, 1/2" NPT Female Inlets & Outlet

Product Compliance:

ASME A112.18.1 / CSA B125.1
NSF 61 - Section 9
NSF 372 (Low Lead Content)



T&S BRASS AND BRONZE WORKS, INC.

2 Saddleback Cove / P.O. Box 1088
Travelers Rest, SC 29690



REG. #A2601
ISO #9001

Model No.

B-0502-537K

Item No.

Travelers Rest, SC: 800-476-4103 Simi Valley, CA: 800-423-0150 Fax: 864-834-3518 www.tsbrass.com

This Space for Architect/Engineer Approval

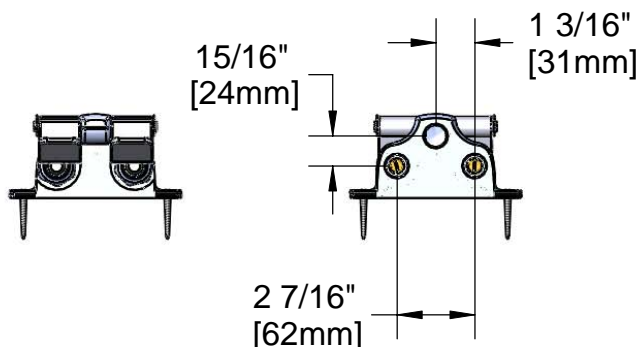
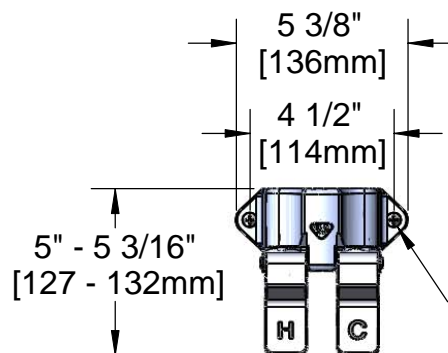
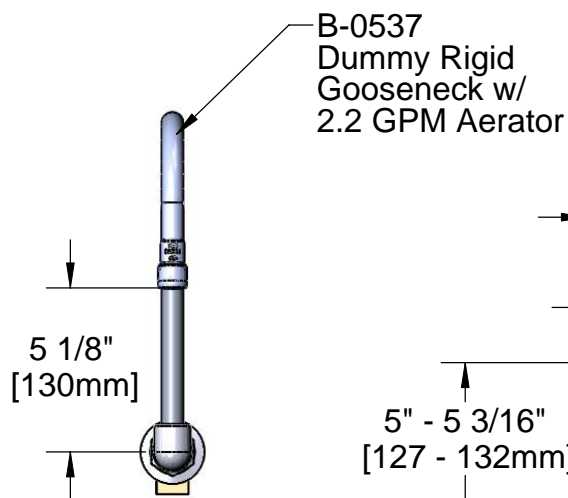
Job Name _____ Date _____

Model Specified _____ Quantity _____

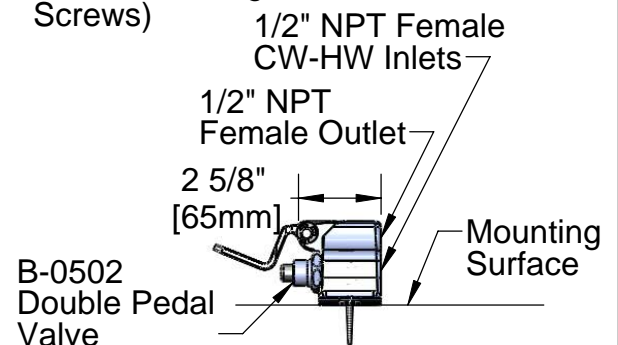
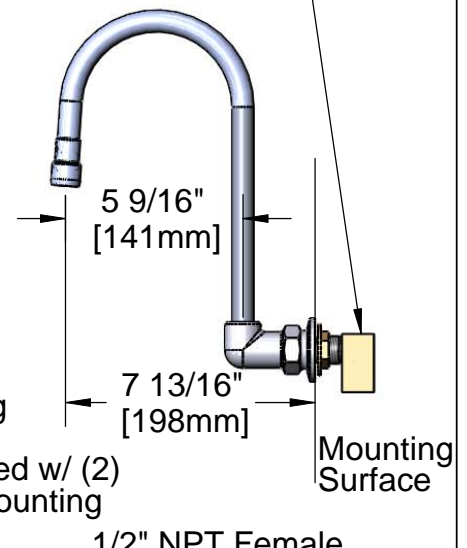
Customer/Wholesaler _____

Contractor _____

Architect/Engineer _____



006895-20
90 Degree Short El
w/ 1/2" NPT Inlet
& Outlet



Product Specifications:

**Floor-Mounted Double Pedal Valve w/
Dummy Rigid Gooseneck and 2.2 GPM Aerator**

Drawn
JRM

Checked
DMH

Approved
JHB

Scale:

NTS

Date:

01/15/10

Sheet: 1 of 1



T&S BRASS AND BRONZE WORKS, INC.

2 SADDLEBACK COVE / P.O. BOX 1088 / TRAVELERS REST, SC 29690

PHONE 800-476-4103

FAX 864- 834-3518



REG.#A2601
ISO #9002

Model No.

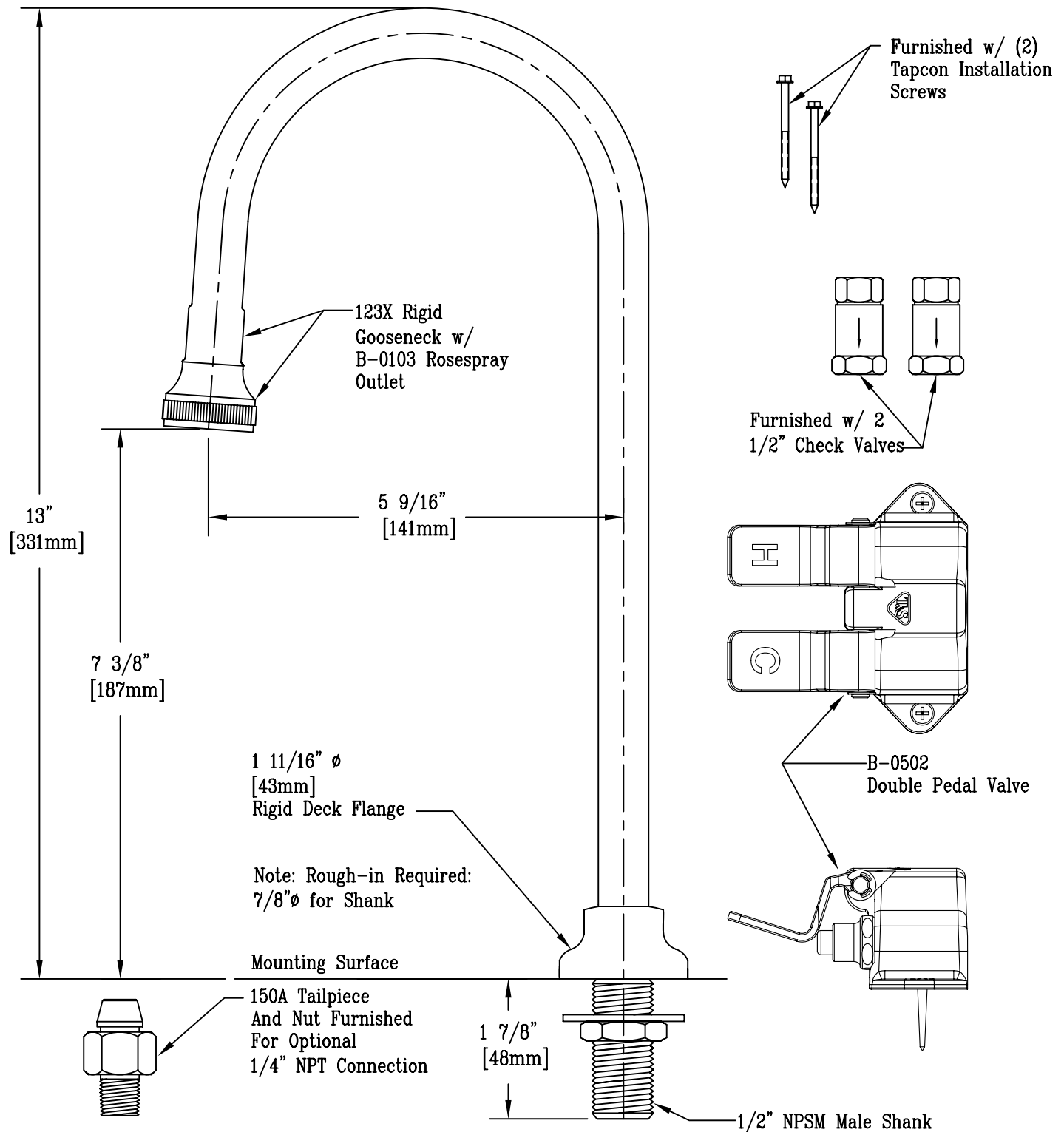
B-0502-03

Item No.:

Job Name:

Architect/Engineer Approval:

Notes:



Product Description:

Double Pedal Valve, Check Valve, Tapcon Installation
Screws & Rigid Dummy Gooseneck w/ Rosespray Outlet

Drawn:

DHL

Approved

JHB

Checked

GEF

Scale:

1:4

Date:

11/13/07