



T&S BRASS AND BRONZE WORKS, INC.

2 Saddleback Cove / P.O. Box 1088
Travelers Rest, SC 29690

Model No.

B-0200-44H-VB

Item No.

Travelers Rest, SC: 800-476-4103 • Simi Valley, CA: 800-423-0150 • Fax: 864-834-3518 • www.tsbrass.com

This Space for Architect/Engineer Approval

Job Name _____ Date _____

Model Specified _____ Quantity _____

Customer/Wholesaler _____

Contractor _____

Architect/Engineer _____

Eterna Cartridges w/
Spring Checks &
Lever Handles w/
Color Coded Indexes

B-0107-035
1.42 GPM
Angled Spray Valve

Wall Hook
w/ (2) Mounting Screws

44" Flexible Stainless
Steel Hose

B-0970-01
3/8" NPT Vacuum Breaker
(Continuous Pressure)

90° Swivel
Adapter Arm

Swivel Joint

7 9/16"
[192mm]

Mounting
Surface

6 1/4"
[158mm]

2 5/16"
[58mm]

Ø 2 1/4" [57mm] Flange w/
Ø 1 1/8" [29mm] Shank

18" Flexible
Stainless Steel
Supply Hoses

Compression Fittings
for 5/8" O.D. Copper Tubing
(Remove Compression Nut
for 1/2" NPSM Male)

1 3/8"
[35mm]
Maximum
Thickness

Rough-In Requirement:
Ø 1 1/2" [38mm] Mounting Hole

Product Specifications:

Single Hole Deck Mount Mixing Faucet, Eterna Cartridges w/
Spring Checks, 90° Swivel Adapter, 44" Flexible Stainless Steel
Hose, 1.42 GPM Angled Spray Valve, 3/8" NPT Vacuum Breaker,
Wall Hook & 18" Flexible Stainless Steel Supply Hoses
w/ 1/2" NPSM Male Inlets

Product Compliance:

ASME A112.18.1 / CSA B125.1
NSF 61 - Section 9
NSF 372 (Low Lead Content)
EPA Act 2005 (PRSV)
CSA B64.8



T&S BRASS AND BRONZE WORKS, INC.

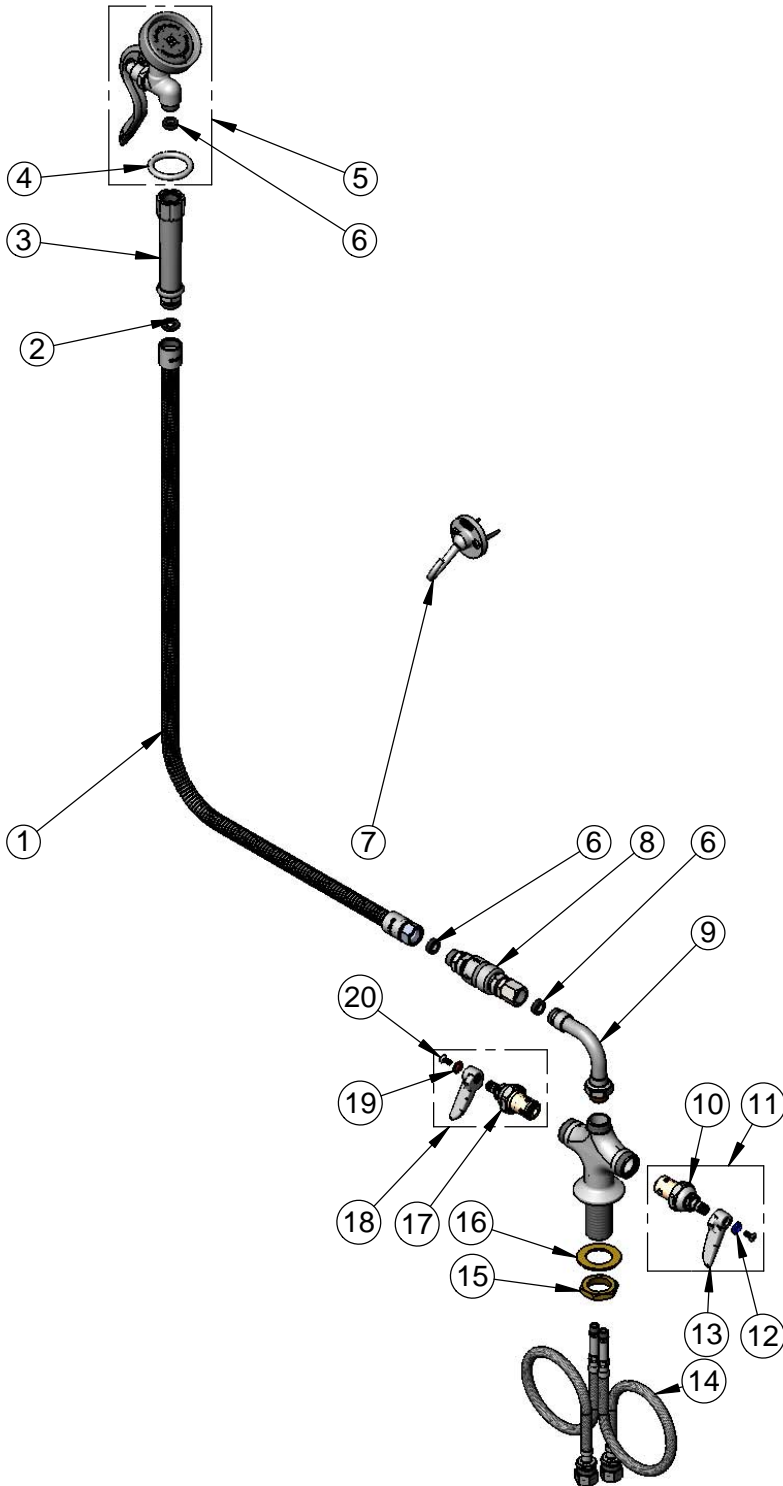
2 Saddleback Cove / P.O. Box 1088
Travelers Rest, SC 29690

Model No.

B-0200-44H-VB

Item No.

Travelers Rest, SC: 800-476-4103 • Simi Valley, CA: 800-423-0150 • Fax: 864-834-3518 • www.tsbrass.com



ITEM NO.	SALES NO.	DESCRIPTION
1	B-0044-H2A	44" Flexible Stainless Steel Hose, Less Handle
2	001014-45	Washer, B-0100 Hose Barrel
3	002987-40	Grip Handle
4	000907-45	Spray Valve Hold Down Ring
5	B-0107-035	1.42 GPM Angled Spray Valve
6	010476-45	#27 Washer
7	B-0104-D	Dummy Wall Hook
8	B-0970-01	3/8" NPT Vacuum Breaker
9	034A	90° Swivel Adapter Arm
10	012442-40	Eterna Cartridge, LTC w/ Spring Check
11	002711-40	Eterna Cartridge, LTC w/ Spring Check, Lever Handle, Index & Screw
12	001660-45	Blue Index-CW
13	001638-45	Lever Handle
14	012534-45	18" Flexible Supply Hose (2)
15	000965-45	Lock Nut
16	002290-45	Lock Washer
17	012443-40	Eterna Cartridge, RTC w/ Spring Check
18	002712-40	Eterna Cartridge, RTC w/ Spring Check, Lever Handle, Index & Screw
19	001661-45	Red Index-HW
20	000922-45	Lever Handle Screw

Product Specifications:

Single Hole Deck Mount Mixing Faucet, Eterna Cartridges w/ Spring Checks, 90° Swivel Adapter, 44" Flexible Stainless Steel Hose, 1.42 GPM Angled Spray Valve, 3/8" NPT Vacuum Breaker, Wall Hook & 18" Flexible Stainless Steel Supply Hoses w/ 1/2" NPSM Male Inlets

Product Compliance:

ASME A112.18.1 / CSA B125.1
NSF 61 - Section 9
NSF 372 (Low Lead Content)
EPAct 2005 (PRSV)
CSA B64.8



T&S BRASS AND BRONZE WORKS, INC.
2 SADDLEBACK COVE / P.O. BOX 1088 / TRAVELERS REST, SC 29690
PHONE 800-476-4103 FAX 864- 834-3518

Model No.

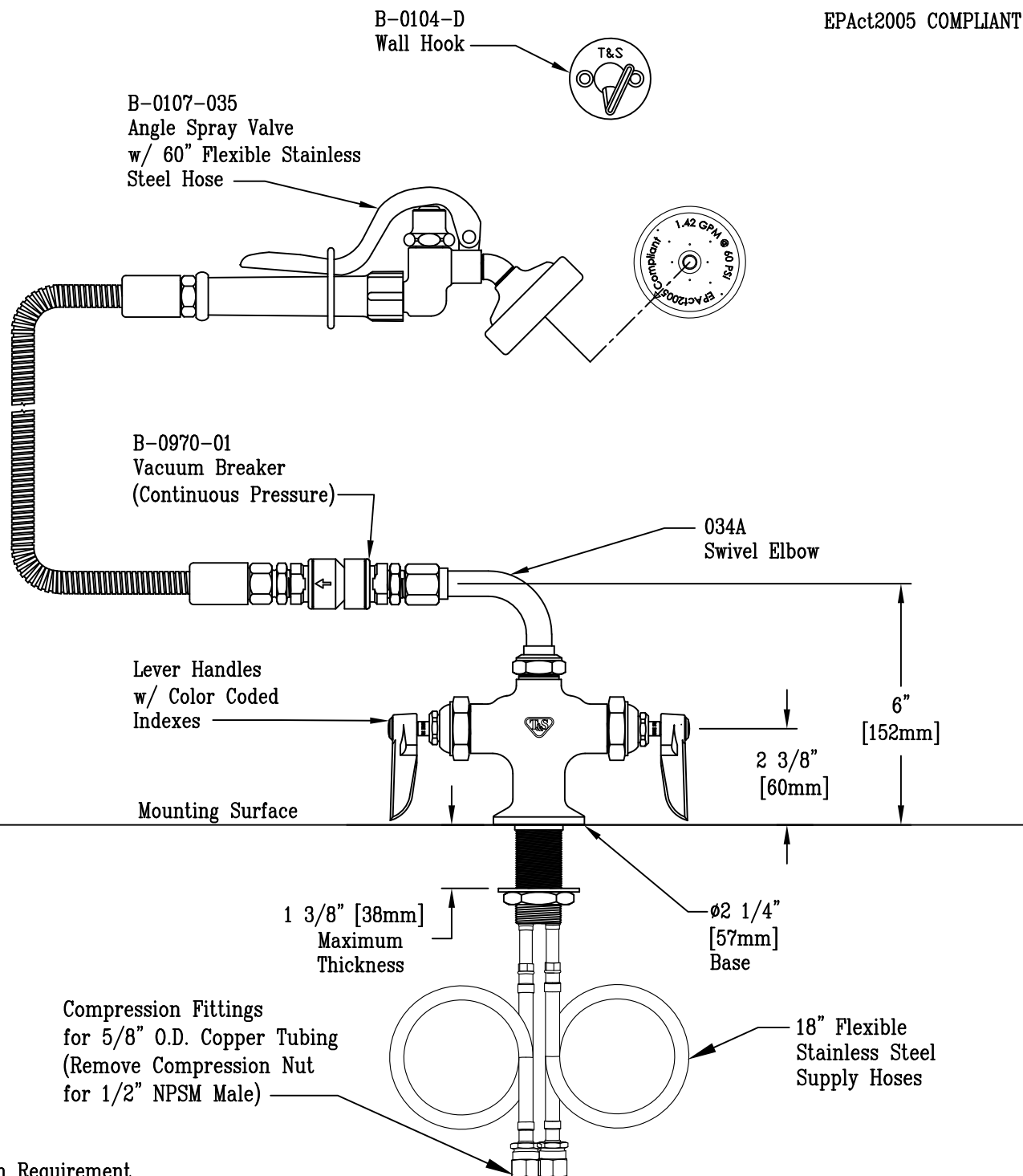
B-0200-60H-VB

Item No.:

Job Name:

Architect/Engineer Approval:

Notes:



Rough-In Requirement

Ø1 1/2" [38mm] Hole

Product Description:

Single Hole Deck Mount Mixing Faucet w/
Swivel Elbow, 60" Flex. Hose, Wall Hook
& 18" Flexible Stainless Steel Supply Hoses w/ 1/2" NPT Male Inlets

Drawn:

JRM

Checked

DHL

Scale:

1 : 4

Approved

JHB

Date:

01/09/15



T&S BRASS AND BRONZE WORKS, INC.

2 Saddleback Cove / P.O. Box 1088
Travelers Rest, SC 29690

Model No.

B-0300-WD

Item No.

Travelers Rest, SC: 800-476-4103 • Simi Valley, CA: 800-423-0150 • Fax: 864-834-3518 • www.tsbrass.com

This Space for Architect/Engineer Approval

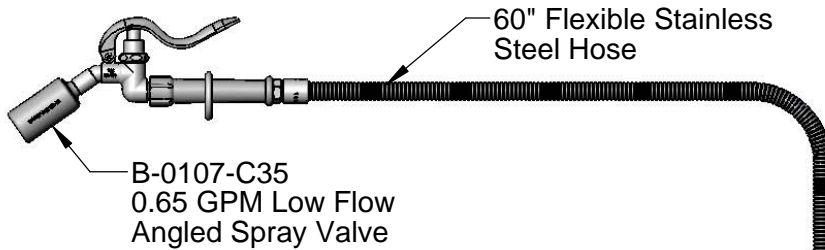
Job Name _____ Date _____

Model Specified _____ Quantity _____

Customer/Wholesaler _____

Contractor _____

Architect/Engineer _____



B-0166
Hanger Hook



2 1/4"
[57mm]

Swivel Joint

7 7/16"
[188mm]

Eterna Cartridges &
Lever Handles w/
Color Coded Indexes

B-0970-01
Vacuum Breaker

2 5/16"
[58mm]

Mounting Surface

7 3/16"
[182mm]

18" Flexible
Stainless Steel
Supply Hose

Compression Fittings for
5/8" O.D. Copper Tubing
(Remove Compression Nut
for 1/2" NPSM Male)

Items Not
Shown For
Clarity



1 1/4"
[32mm]
Maximum
Thickness

Rough-In Requirement:
Ø 1 1/2" [38mm] Mounting Hole

Product Specifications:

Single Hole Deck Mount Mixing Faucet, Eterna Cartridges w/ Spring Checks, 0.65 GPM Low Flow Spray Valve, 60" Flexible Stainless Steel Hose, Vacuum Breaker & 18" Flexible Supply Hoses

Product Compliance:

ASME A112.18.1 / CSA B125.1
NSF 61 - Section 9
NSF 372 (Low Lead Content)
EPA 2005 (PRSV)
CSA B64.8 (VB)



T&S BRASS AND BRONZE WORKS, INC.

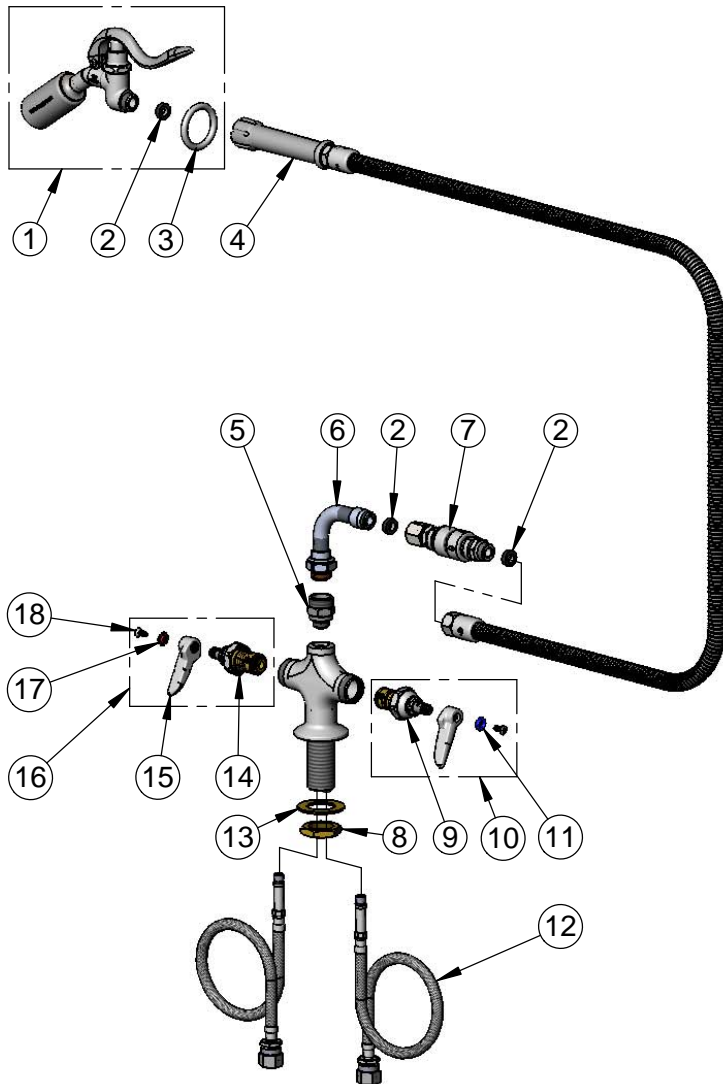
2 Saddleback Cove / P.O. Box 1088
Travelers Rest, SC 29690

Model No.

B-0300-WD

Item No.

Travelers Rest, SC: 800-476-4103 • Simi Valley, CA: 800-423-0150 • Fax: 864-834-3518 • www.tsbrass.com



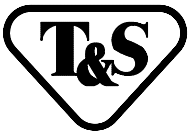
ITEM NO.	SALES NO.	DESCRIPTION
1	B-0107-C35	0.65 GPM Angled Spray Valve
2	010476-45	#27 Washer
3	000907-45	Spray Valve Hold Down Ring
4	B-0060-H	60" Flexible Stainless Steel Hose
5	B-0412	Rigid to Swivel Adapter
6	034A	Swivel Adapter, 90°
7	B-0970-01	Vacuum Breaker
8	000965-45	Lock Nut
9	012442-40	Eterna Cartridge, LTC w/ Spring Check
10	002711-40	Eterna Cartridge, LTC w/ Spring Check, Handle, Index & Screw
11	001660-45	Blue Index-CW
12	012534-45	18" Flexible Supply Hose (2)
13	002290-45	Lock Washer
14	012443-40	Eterna Cartridge, RTC w/ Spring Check
15	001638-45	Lever Handle
16	002712-40	Eterna Cartridge, RTC w/ Spring Check, Handle, Index & Screw
17	001661-45	Red Index-HW
18	000922-45	Lever Handle Screw

Product Specifications:

Single Hole Deck Mount Mixing Faucet, Eterna Cartridges w/ Spring Checks, 0.65 GPM Low Flow Spray Valve, 60" Flexible Stainless Steel Hose, Vacuum Breaker & 18" Flexible Supply Hoses

Product Compliance:

ASME A112.18.1 / CSA B125.1
NSF 61 - Section 9
NSF 372 (Low Lead Content)
EPAct 2005 (PRSV)
CSA B64.8 (VB)



T&S BRASS AND BRONZE WORKS, INC.

2 SADDLEBACK COVE / P.O. BOX 1088 / TRAVELERS REST, SC 29690

PHONE 800-476-4103

FAX 803- 834-3518



REG.#A2601
ISO #9002

Model No.

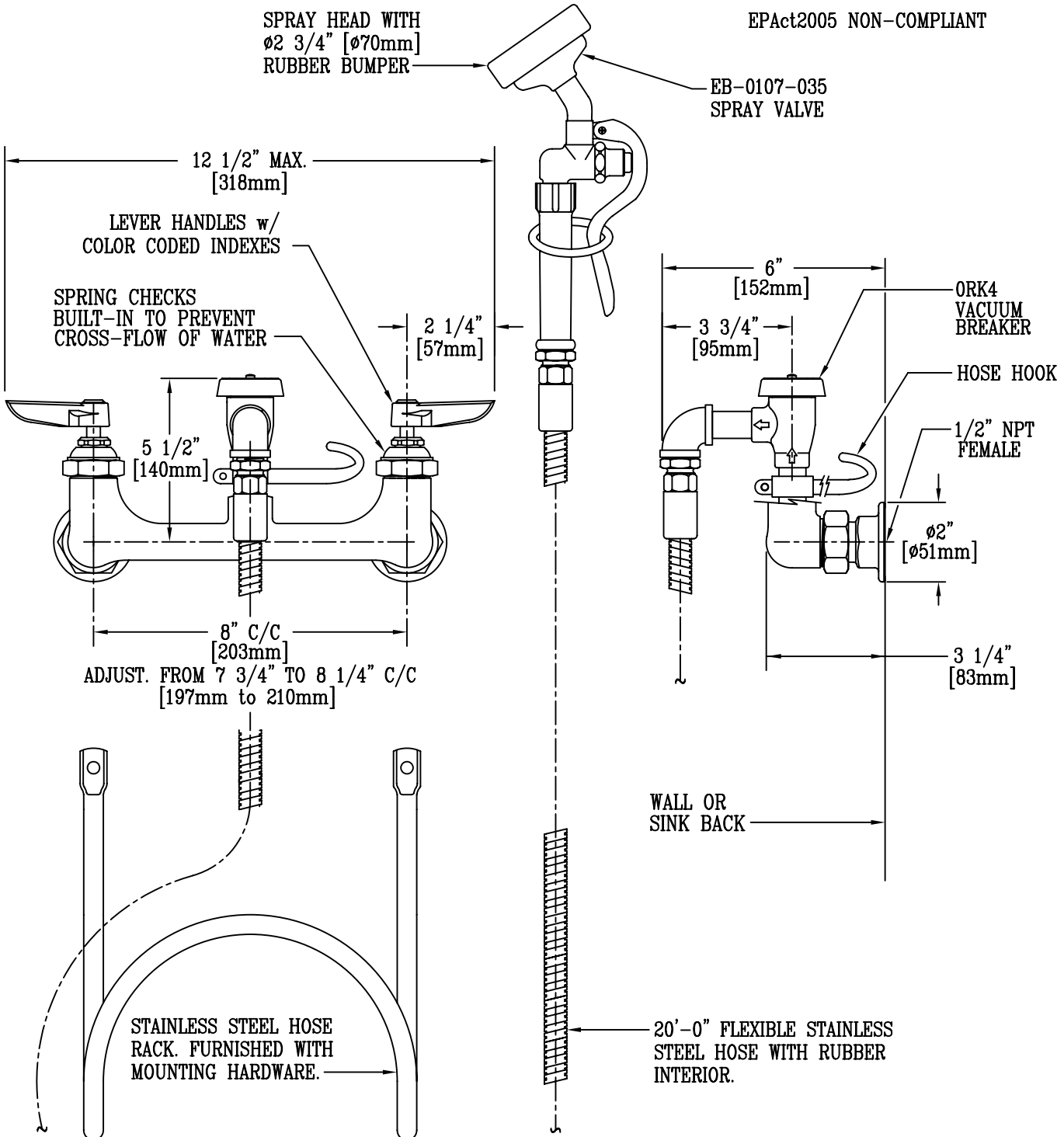
B-2311

Item No.:

Job Name:

Architect/Engineer Approval:

Notes:



Product Description:

POT & KETTLE FILLER: EB-0107-035 SPRAY VALVE
w/ FLEX HOSE ASM, B-131 FAUCET BASE,
LEVER HANDLES & VACUUM BREAKER

Drawn:

KJG

Checked

JRM

Scale:

1 : 4

Approved

JHB

Date:

5/21/08



T&S BRASS AND BRONZE WORKS, INC.

2 SADDLEBACK COVE / P.O. BOX 1088 / TRAVELERS REST, SC 29690

PHONE 800-476-4103

FAX 803- 834-3518



REG.#A2601
ISO #9002

Model No.

B-2311-CR

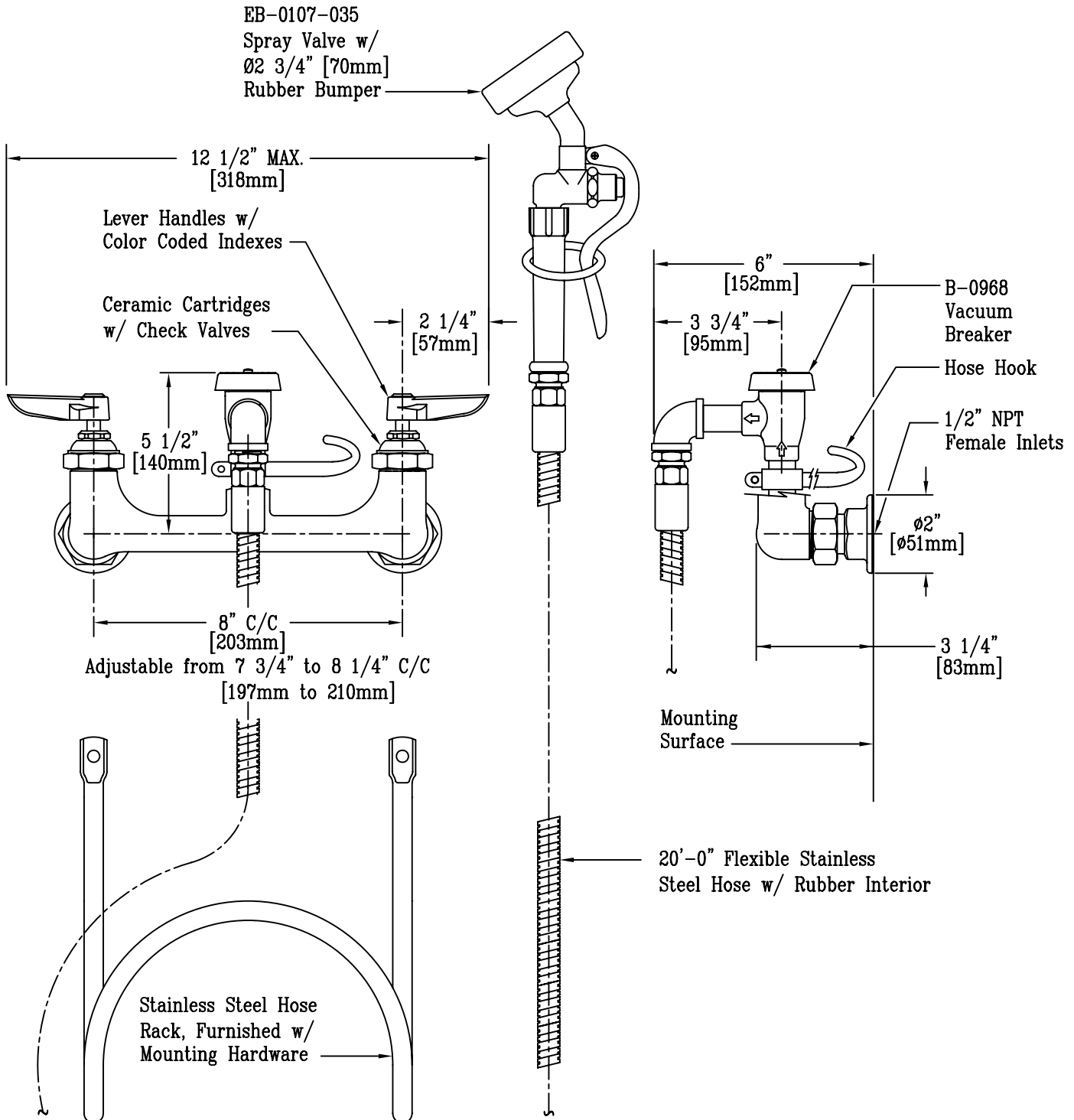
Item No.:

Job Name:

Architect/Engineer Approval:

Notes:

EPAct2005 NON-COMPLIANT



Product Description:

Pot & Kettle Filler: EB-0107-035 Spray Valve w/ 20' Flexible Hose Assembly, B-0131 Faucet Base, Lever Handles, Vacuum Breaker, Cerama Cartridges w/ Check Valves, & SS Hose Rack

Drawn:

DHL

Checked

JRM

Scale:

1 : 4

Approved

JHB

Date:

12/10/08