



**RELIABILITY BUILT IN™**

#### **Limited One Year Warranty**

T&S warrants to the original purchaser (other than for purposes of resale) that such product is free from defects in material and workmanship for a period of one (1) year from the date of purchase. During this one-year warranty period, if the product is found to be defective, T&S shall, at its options, repair and/or replace it. To obtain warranty service, products must be returned to...

*T&S Brass and Bronze Works, Inc.  
Attn: Warranty Repair Department  
2 Saddleback Cove  
Travelers Rest, SC 29690*

Shipping, freight, insurance, and other transportation charges of the product to T&S and the return of repaired or replaced product to the purchaser are the responsibility of the purchaser. Repair and/or replacement shall be made within a reasonable time after receipt by T&S of the returned product. This warranty does not cover items which have received secondary finishing or have been altered or modified after purchase, or for defects caused by physical abuse to or misuse of the product, or shipment of the products.

Any express warranty not provided herein, and any remedy for Breach of Contract which might arise, is hereby excluded and disclaimed. Any implied warranties of merchantability or fitness for a particular purpose are limited to one year in duration. Under no circumstances shall T&S be liable for loss of use or any special consequential costs, expenses or damages.

Some states do not allow limitations on how long and implied warranty lasts or the exclusion or limitation of incidental or consequential damages, so the above limitations or exclusions may not apply to you. Specific rights under this warranty and other rights vary from state to state.

P/N: 098-003151-45 Rev.5  
Date: 03-11-15  
Drawn: TEH  
Checked: JRM 03-30-15  
Approved: JHB 03-31-15

# Installation and Maintenance Instructions



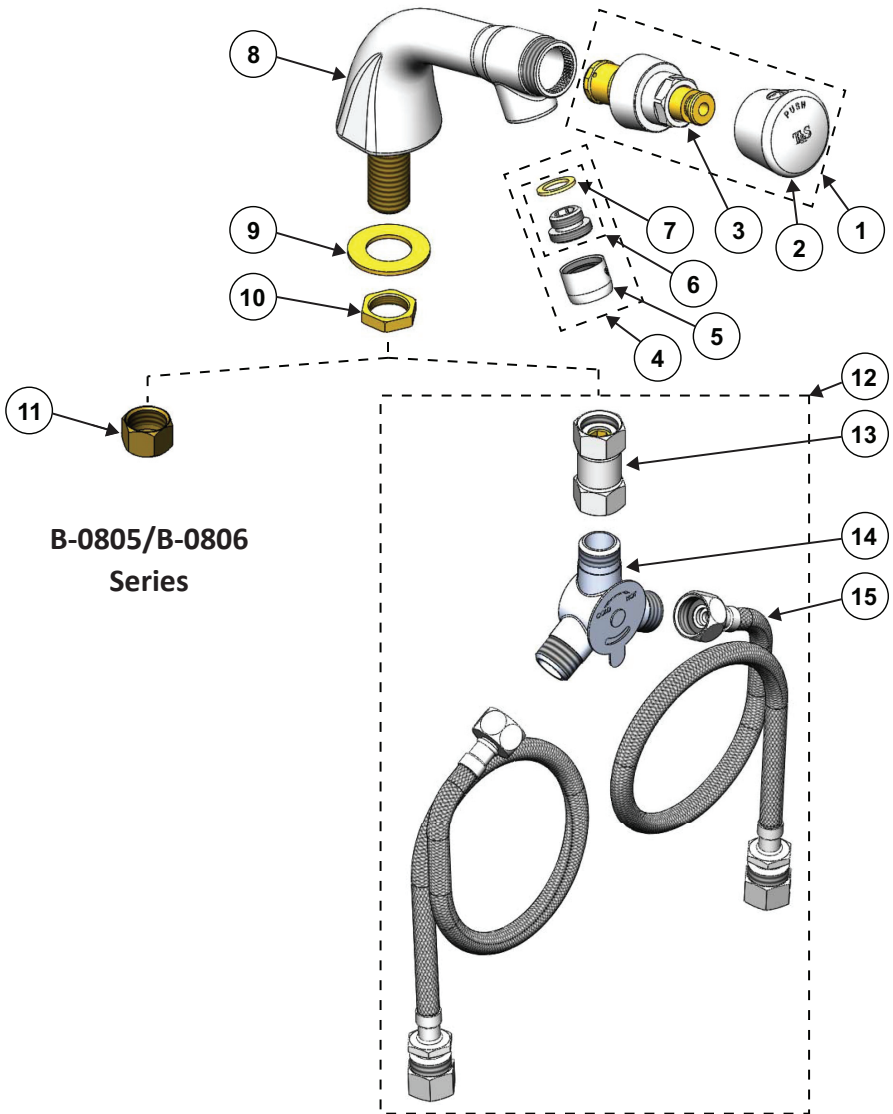
## **B-0805 SERIES METERING FAUCETS**

**Deutsch: Installations- und  
Wartungsanleitungen**

**Español: la Instalación y las  
Instrucciones de  
Mantenimiento**

**Français: les Instructions  
d'Installation et  
d'Entretien**

# Exploded View



**B-0805/B-0806  
Series**

**B-0807/B-0808  
Series**

# Part Number Guide

## ***Metering Faucet Assembly***

---

1	Asm, Push Button Metering Cartridge & Cap	238AB
2	Asm, Push Button Cap - Blank	014193-40
3	Push Button Metering Cartridge	238A
4	Aerator, 2.2 GPM, Adapter & Washer	B-0199-02
5	Aerator, 2.2 GPM	B-0199-01
6	Adapter, 3/8" to Aerator	044A
7	Washer	001043-45
8	Body, Faucet	N/A
9	Washer, Brass Lock	000999-45
10	Locknut, Shank	002954-45
11	Nut, Nipple Coupling ( <i>B-0805/B-0806 Series</i> )	000958-20

---

## ***Parts Applicable to the B-0807/B-0808 Series Only***

---

12	Asm, Mixing Valve with Flexible 1/2" Male Inlets	019321-40
13	Coupling, 1/2" NPSM Swivel Coupling	017506-45
14	Mechanical Mixing Valve	5EF-0006
15	Hoses, Flexible Connector (Qty 2)	019192-45

---

# General Instructions

## **Installation: B-0805/B-0806 Series**

1. Turn off water supply and drain lines. Flush lines thoroughly of debris.
2. Drill a 1" diameter hole through sink or countertop in desired location.
3. Remove no.11, no.10 and no.9 from no.8. Place no.8 through opening in sink.
4. Replace no.9, no.10 and no.11 onto no.8 and tighten against bottom of sink. Hold no.8 flat against sink while tightening no.10.
5. Connect water supply to no.11 and check for leaks.

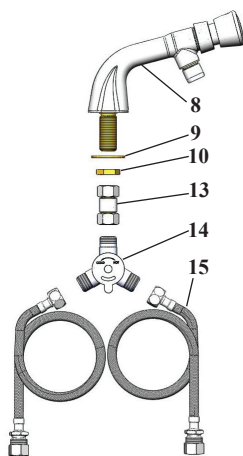
**Note: Flow is adjustable from instantaneous shut-off to extended flow by external adjustment:**

*Note: Each metering cartridge is preset for approximately 10 seconds at the factory. They may be reset at installation. If water pressure varies, the cycle time will also vary.*

**Note: See installation instruction 098-014733-45 for cartridge adjustment.**

## **Installation: B-0807/B-0808 Series**

1. Turn off water supply and drain lines. Flush lines thoroughly of debris.
2. Drill a 1" diameter hole through sink or countertop in desired location.
3. Remove no.10 and no.9 from no.8. Place no.8 through opening in sink.
4. Replace no.9 and no.10 onto no.8 and tighten against bottom of sink. Hold no.8 flat against sink while tightening no.10.
5. Place no.13 on no.8 and tighten.
6. Place no.14 on no.13 and tighten.
7. Place both no.15's on each side of no.14 and tighten.
8. Connect water supply to no.15's and check for leaks.



# Instrucciones Generales

## Instalación: B-0805/B-0806 la Serie

1. Desconecte el suministro de agua y drene las tuberías. Limpie bien la suciedad de las tuberías.
2. Haga un agujero de 25 mm con un taladro en la pila o en la encimera en la ubicación deseada.
3. Separe el no. **11**, el no. **10** y el no. **9** del no. **8**. Coloque el no. **8** a través del agujero de la pila.
4. Vuelva a colocar en su sitio el no. **9**, el no. **10** y el no. **11** en el no. **8** y ajuste contra la parte inferior de la pila. Sostenga el no. **8** en plano contra la pila mientras ajusta el no. **10**.
5. Conecte el suministro de agua al no. **11** y busque posibles fugas.

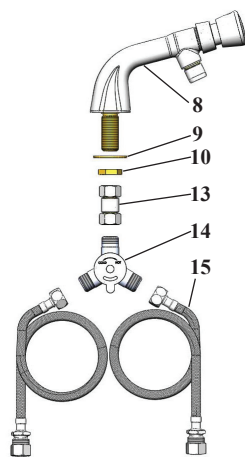
**Nota: El flujo se puede ajustar de automático a ampliado mediante un ajuste externo:**

*Nota: La válvula de medición viene ajustada de fábrica con una duración de 10 segundos. Se puede volver a configurar durante la instalación. Si varía la presión del agua, la duración del ciclo también variará.*

**Nota: Consulte las instrucciones de instalación 098-014733-45 para ajustar la válvula.**

## Instalación: B-0807/B-0808 la Serie

1. Desconecte el suministro de agua y drene las tuberías. Limpie bien la suciedad de las tuberías.
2. Haga un agujero de 25 mm con un taladro en la pila o en la encimera en la ubicación deseada.
3. Separe el no. **10** y el no. **9** del no. **8**. Coloque el no. **8** a través del agujero de la pila.
4. Vuelva a colocar el no. **9** y el no. **10** en el no. **8** y ajuste contra la parte inferior de la pila. Sostenga el no. **8** en plano contra la pila mientras ajusta el no. **10**.
5. Coloque el no. **13** en el no. **8** y ajuste.
6. Coloque el no. **14** en el no. **13** y ajuste.
7. Coloque los dos no. **15** en cada lado del no. **14** y ajuste.
8. Conecte el suministro de agua al no. **15** y busque posibles fugas.



# Instructions Générales

## **Installation: B-0805/B-0806 Série**

1. Couper l'arrivée d'eau et vider les tuyaux. Nettoyer les canalisations.
2. Percer un trou de 2,5 cm de diamètre dans l'évier ou sur le plan de travail à l'endroit souhaité.
3. Retirer le N° 11, le N° 10 et le N° 9 du N° 8. Placer le N° 8 dans l'ouverture de l'évier.
4. Replacer le N° 9, le N° 10 et le N° 11 sur le N° 8 et serrer en bas de l'évier. Tenir le N° 8 à plat contre l'évier tout en serrant le N° 10.
5. Connecter l'arrivée d'eau au N° 11 et vérifier les fuites éventuelles.

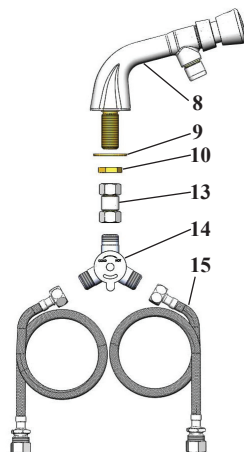
**Remarque : un réglage externe vous permet d'ajuster le flux (arrêt total jusqu'à flux maximum).**

*Remarque : chaque cartouche de mesure est préconfigurée pendant environ 10 secondes à l'usine. Elles peuvent être reconfigurées lors de l'installation. Si la pression de l'eau varie, la durée du cycle sera également modifiée.*

**Note : consulter les instructions d'installation 098-014733-45 pour le réglage de la cartouche.**

## **Installation: B-0807/B-0808 Série**

1. Couper l'arrivée d'eau et vider les tuyaux. Nettoyer les canalisations.
2. Percer un trou de 2,5 cm de diamètre dans l'évier ou sur le plan de travail à l'endroit souhaité.
3. Retirer le N° 10 et le N° 9 du N° 8. Placer le N° 8 dans l'ouverture de l'évier.
4. Replacer le N° 9 et le N° 10 sur le N° 8 et serrer en bas de l'évier. Tenir le N° 8 à plat contre l'évier tout en serrant le N° 10.
5. Placer le N° 13 sur le N° 8 et serrer.
6. Placer le N° 14 sur le N° 13 et serrer.
7. Placer les deux N° 15 de chaque côté du N° 14 et serrer.
8. Connecter l'arrivée d'eau aux deux N° 15 et vérifier les fuites éventuelles.



# Allgemeine Anleitungen

## **Installation: B-0805/B-0806 Serie**

1. Wasserzufuhr ausschalten und Rohre entleeren. Alle Rückstände aus den Rohren spülen.
2. An der gewünschten Stelle eine Öffnung mit einem Durchmesser von 2,5 cm im Spülbecken oder in der Arbeitsfläche anbringen.
3. Nr. 11, Nr. 10 und Nr. 9 von Nr. 8 abnehmen. Nr.8 durch die Öffnung im Spülbecken einbringen.
4. Nr. 9, Nr. 10 und Nr. 11 wieder an Nr. 8 anbringen und unten am Spülbecken befestigen. Nr. 8 gegen das Spülbecken drücken und Nr. 10 festziehen.
5. Wasserzufuhr wieder an Nr. 11 anschließen und auf undichte Stellen prüfen.

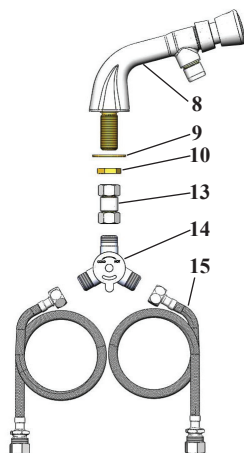
**Hinweis: Der Durchfluss kann extern von einer Sofortsperrre bis auf hohe Strömungswerte eingestellt werden:**

*Hinweis: Jede Dosierpatrone ist ab Werk auf ca. 10 Sekunden voreingestellt. Diese Einstellung kann beim Einbau geändert werden. Bei schwankendem Wasserdruck ändert sich auch die Zukluszeit.*

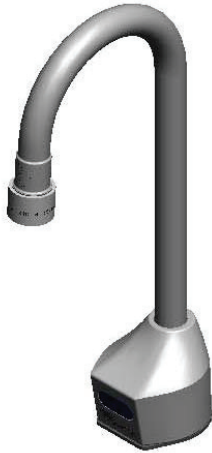
**Hinweis: Informationen zur Einstellung der Patrone finden Sie in Installationsanleitung 098-014733-45.**

## **Installation: B-0807/B-0808 Serie**

1. Wasserzufuhr ausschalten und Rohre entleeren. Alle Rückstände aus den Rohren spülen.
2. An der gewünschten Stelle eine Öffnung mit einem Durchmesser von 2,5 cm im Spülbecken oder in der Arbeitsfläche anbringen.
3. Nr. 10 und Nr. 9 von Nr. 8 abnehmen. Nr. 8 durch die Öffnung im Spülbecken einbringen.
4. Nr. 9 und Nr. 10 wieder an Nr. 8 anbringen und unten am Spülbecken befestigen. Nr. 8 gegen das Spülbecken drücken und Nr. 10 festziehen.
5. Nr. 13 auf Nr. 8 platzieren und festziehen.
6. Nr. 14 auf Nr. 13 platzieren und festziehen.
7. Nr. 15 auf jede Seite von mit Nr. 14 gekennzeichneten Komponenten platzieren und festziehen.
8. Wasserzufuhr wieder an alle mit Nr. 15 gekennzeichneten Komponenten anschließen und auf undichte Stellen prüfen.



## RELATED T&S BRASS PRODUCT LINE



### EC-3100

ChekPoint Electronic Faucet

Deck-Mount, Gooseneck, AD/DC Control Module

---

## T&S BRASS AND BRONZE WORKS, INC.

A firm commitment to application-engineered plumbing products

2 Saddleback Cove, P.O. Box 1088,  
Travelers Rest, SC 29690

Phone: (864) 834-4102

Fax: (864) 834-3518

E-mail: [tsbrass@tsbrass.com](mailto:tsbrass@tsbrass.com)

T & S Brass-Europe  
'De Veenhoeve'

Oude Nieuwveenseweg 84

2441 CW Nieuwveen

The Netherlands



RELIABILITY BUILT IN™





#### Limited One Year Warranty

T&S warrants to the original purchaser (other than for purposes of resale) that such product is free from defects in material and workmanship for a period of one (1) year from the date of purchase. During this one-year warranty period, if the product is found to be defective, T&S shall, at its options, repair and/or replace it. To obtain warranty service, products must be returned to...

*T&S Brass and Bronze Works, Inc.  
Attn: Warranty Repair Department  
2 Saddleback Cove  
Travelers Rest, SC 29690*

Shipping, freight, insurance, and other transportation charges of the product to T&S and the return of repaired or replaced product to the purchaser are the responsibility of the purchaser. Repair and/or replacement shall be made within a reasonable time after receipt by T&S of the returned product. This warranty does not cover items which have received secondary finishing or have been altered or modified after purchase, or for defects caused by physical abuse to or misuse of the product, or shipment of the products.

Any express warranty not provided herein, and any remedy for Breach of Contract which might arise, is hereby excluded and disclaimed. Any implied warranties of merchantability or fitness for a particular purpose are limited to one year in duration. Under no circumstances shall T&S be liable for loss of use or any special consequential costs, expenses or damages.

Some states do not allow limitations on how long an implied warranty lasts or the exclusion or limitation of incidental or consequential damages, so the above limitations or exclusions may not apply to you. Specific rights under this warranty and other rights vary from state to state.

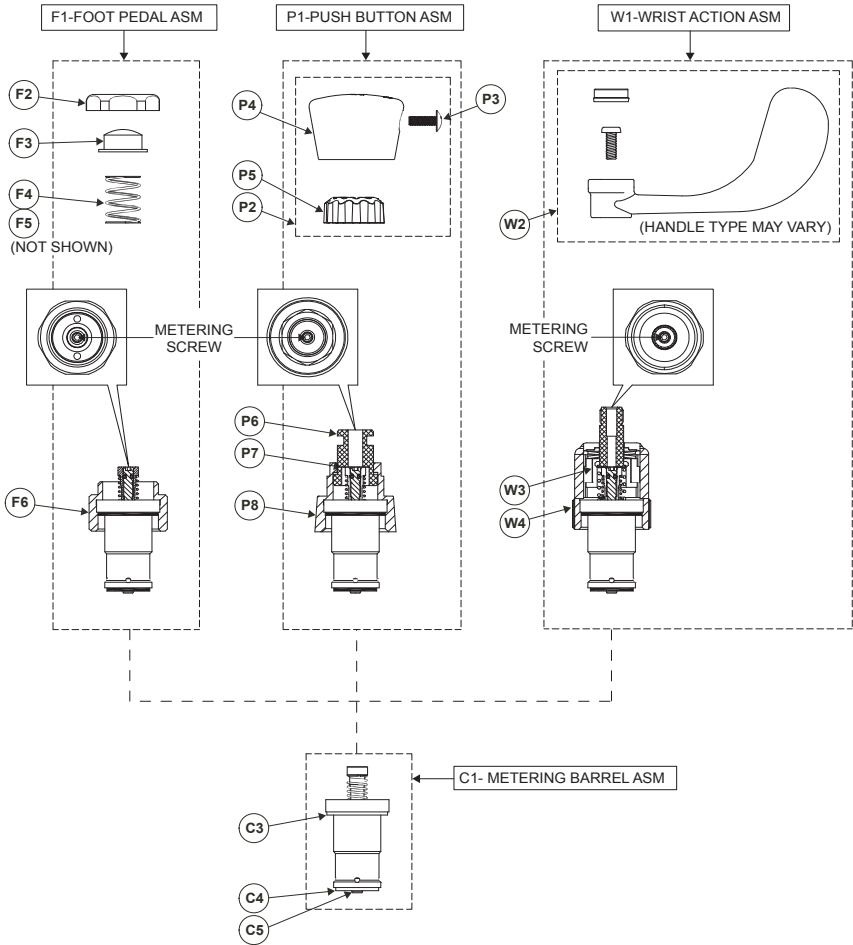
P/N: 098-014733-45 Rev.1  
Date: 05-18-10  
Drawn: TEH  
Checked: GEF 09-13-10  
Approved: JHB 09-13-10

# Installation and Maintenance Instructions



## METERING BARREL ASSEMBLY

# Exploded View



# Part Number Guide

## **Foot Pedal**

F1	Asm, <b>Floor</b> Mounted Foot Pedal	011399-40
F2	Screw Cap, Foot Pedal	*
F3	Button, Foot Pedal	*
F4	Spring	*
F6	Bonnet, Foot Pedal	*
F1	Asm, <b>Wall</b> Mounted Foot Pedal	011406-40
F2	Screw Cap, Foot Pedal	*
F3	Button, Foot Pedal	*
F4	Spring	*
F5	Spring (011406-40 Asm Not Shown)	*
F6	Bonnet, Foot Pedal	*

## **Push Button**

P1	Push Button Asm, Blank Valve	238AB
	Screw Cap, Foot Pedal	238AH
	Button, Foot Pedal	238AC
P2	Blank Cap Asm, Push Button	014193-40
	Hot Cap Asm, Push Button	014194-40
	Cold Cap Asm, Push Button	014195-45
P3	Screw Cap, Push Button	014145-45
P4	Blank Cap, Push Button	*
	Hot Cap, Push Button	*
	Cold Cap, Push Button	*
P5	Insulator, Push Button	*
P6	Guide Bushing, Push Button	*
P7	Kapton Washer (Not Shown)	*
P8	Bonnet, Push Button	*

## **Wrist Action**

W1	Wrist Action Asm	012449-40
W2	Handle Asm (Various Options Available)	*
W3	Repair Kit, Wrist Action	012555-40
	Return Spring	*
	Kapton Washer	*
	Asm, Stem Cam	*
	Linear Cam	*
	Bellville Springs	*
	Stem Bushing	*
W2	Bonnett	*

## **Metering Barrel Assembly**

C1	Metering Barrel Assembly	014152-40
C2	Seal Repair Kit	014152-40K
C3	Top Seal	*
C4	Bottom Seal	*
C5	Stem Seal	*

\* Items not sold as separate parts; listed for instruction purposes only.

# General Instructions

## Tools Required:

### *Foot Pedal*

- 1 Allen Wrench (3/32")
- 1 1-1/4 Wrench
- 1 1-3/8 Wrench

### *Push Button*

- 1 Allen Wrench (3/32")
- 1 15/16 Wrench
- 1 #8 Spanner Bit/Wrench

### *Wrist Action*

- 1 Allen Wrench (3/32")
- 1 1-3/8 Wrench

## Metering Cartridge:

*Note: Each metering cartridge is preset for approximately 10 seconds at the factory. They may be reset at installation. If water pressure varies, the cycle time will also vary. T&S advises to flush the supply lines prior to new faucet or replacement part installation.*

## Adjustment

### 1. Handle/Cap Removal

*Foot Pedal:* Unscrew screw cap (F2) from assembly. Remove F3 and F4 (and F5 if installed).

*Push Button:* Unscrew P3 from cap. Remove P4.

*Wrist Action:* Remove W2. Various handle assemblies are available. Majority of handle assemblies contain handle, screw, and index tab.

### 2. Timing Adjustment

1/8 turn increments  
clockwise for longer  
flow time



1/8 turn increments  
counter-clockwise for  
shorter flow time



Refer to exploded view for metering screw location.

Depress stem (with P5 insulator installed) fully to verify timing and make adjustments if necessary after valve has closed.

### 3. Reinstall handle assembly

## Cartridge Replacement:

1. Turn off water supply.
2. Perform step 1 in adjustment section.
3. Unscrew F6 (foot pedal), P8 (push button), or W4 (wrist action) from faucet body.

4. Unscrew C1 from F6, P8, or W4.

Note: Cartridge may have unscrewed from bonnet during bonnet removal.

5. Discard old C1 and its attached seals.

6. Screw new C1 into bonnet (F6, P8, or W4).

7. Verify that external seals are intact (C3, C4, C5). It is helpful to push C3 into bonnet until it bottoms out. This will insure proper sealing with the faucet body.

8. Screw assembly securely (30 lbs minimum) into faucet body.

9. Turn on water supply and check for leaks.

10. Reinstall handle assembly.

*Caution: If faucet has separate hot and cold controls, make certain that hot water shuts off before cold to avoid scalding.*

*Wrist Action Note: Install wrist action handles in an orientation that allows 1/4 turn (full activation of metering cartridge). Whenever possible, install handles to prevent valves from being intentionally stuck in open position when handle is rotated beyond intended 90° (1/4 turn) activation.*

## RELATED T&S BRASS PRODUCT LINE

---

### T&S BRASS AND BRONZE WORKS, INC.

A firm commitment to application-engineered plumbing products

2 Saddleback Cove, P.O. Box 1088,  
Travelers Rest, SC 29690

*Phone:* (864) 834-4102

*Fax:* (864) 834-3518

*E-mail:* [tsbrass@tsbrass.com](mailto:tsbrass@tsbrass.com)

T & S Brass-Europe  
'De Veenhoeve'

Oude Nieuwveenseweg 84

2441 CW Nieuwveen

The Netherlands



RELIABILITY BUILT IN™